

Steps to emulate PS1 on PC using ePSXe

The 'childhood' games on the PS1 system are associated with many generations of young people 8x, 9x. Instead of reminiscing about your favorite games, you can experience PS1 games on your computer with ePSXe software.

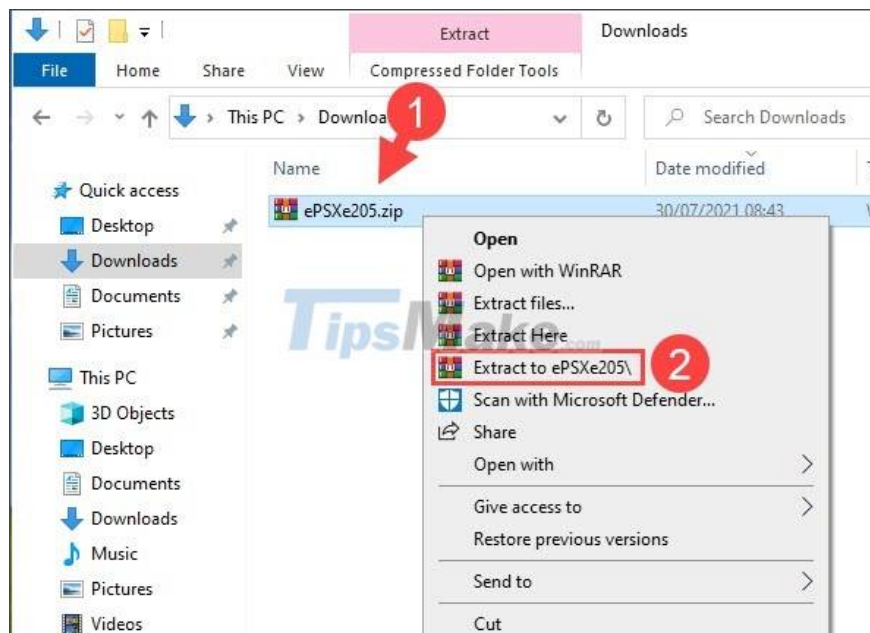
1. Download ePSXe emulator

Step 1: You visit the website [here](#) to download the ePSXe emulator.

Next, click on the Windows version to download to your computer.

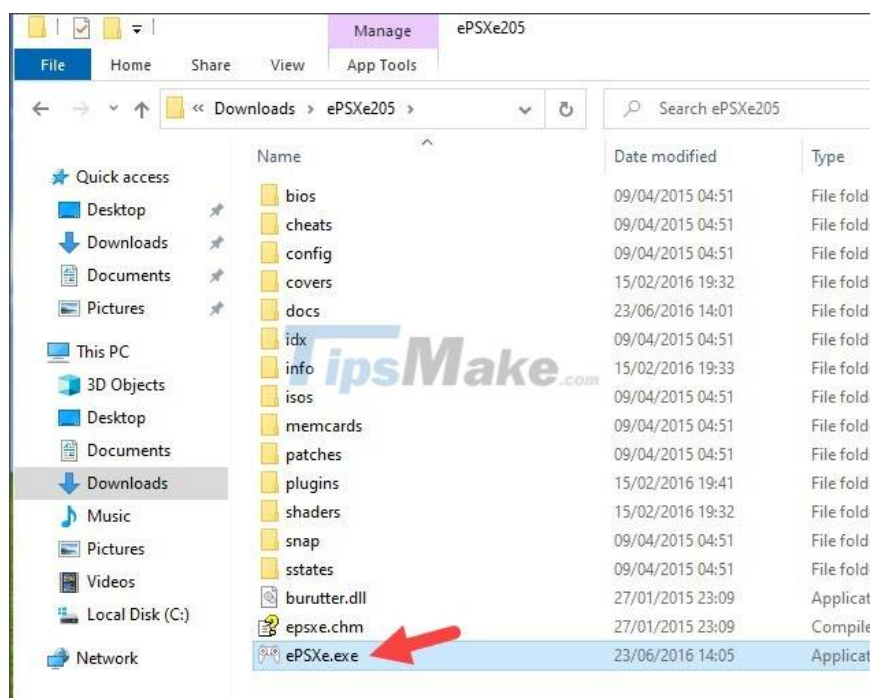


Step 2: After downloading, right click on the compressed file (1) => Extract to (2).

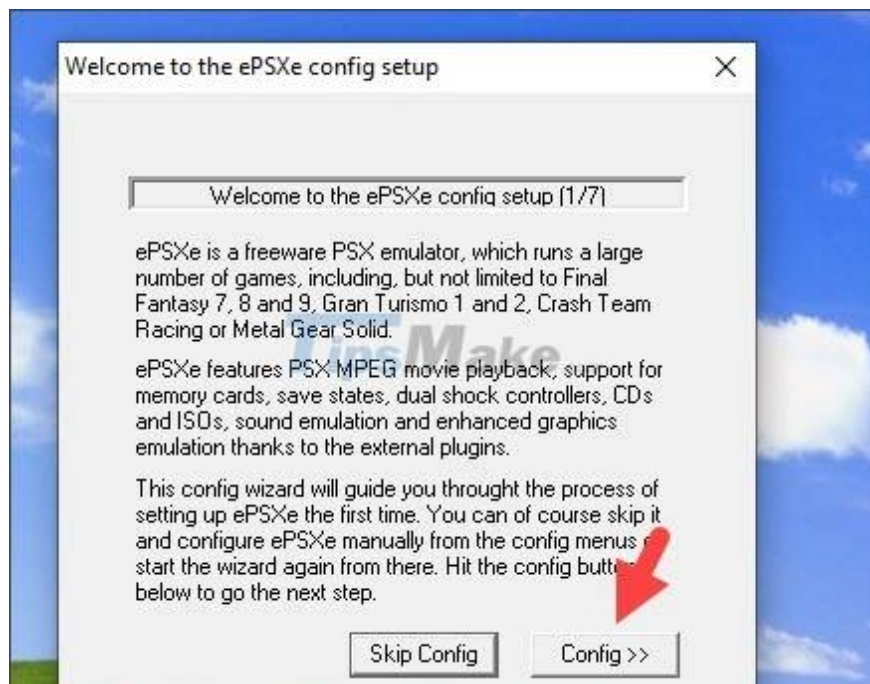


2. Initial setup on the ePSXe . emulator

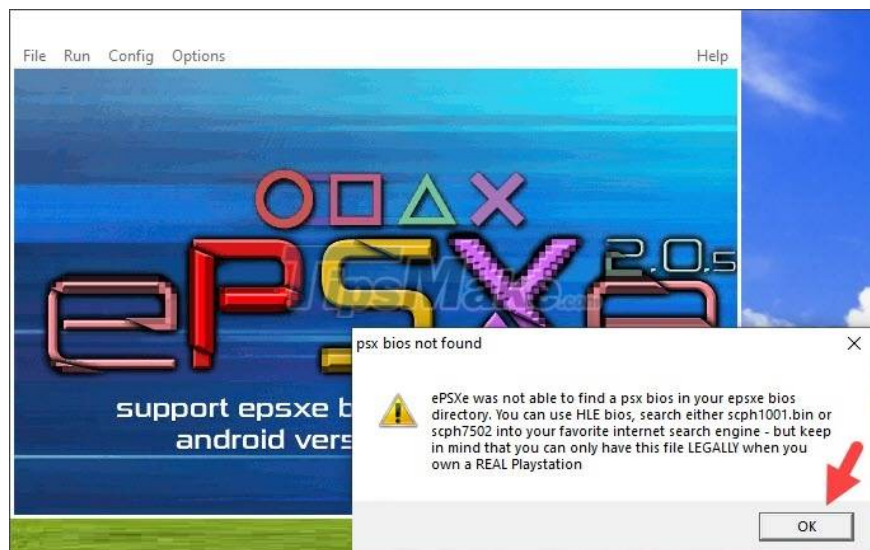
Step 1: Double-click ePSXe.exe to open the software.



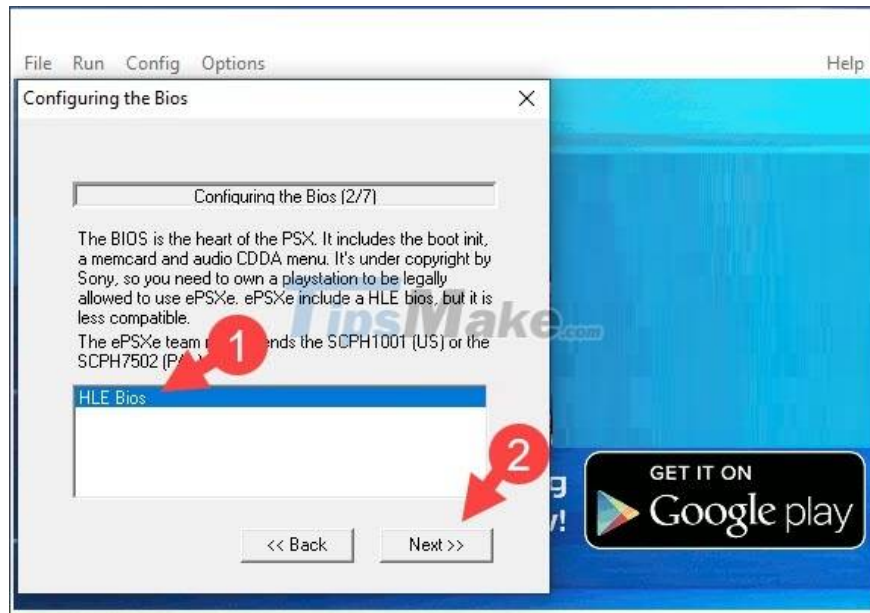
Step 2: Click on Config >> to start configuring the emulator.



If there is a missing BIOS error message as shown below, click OK to ignore this error.



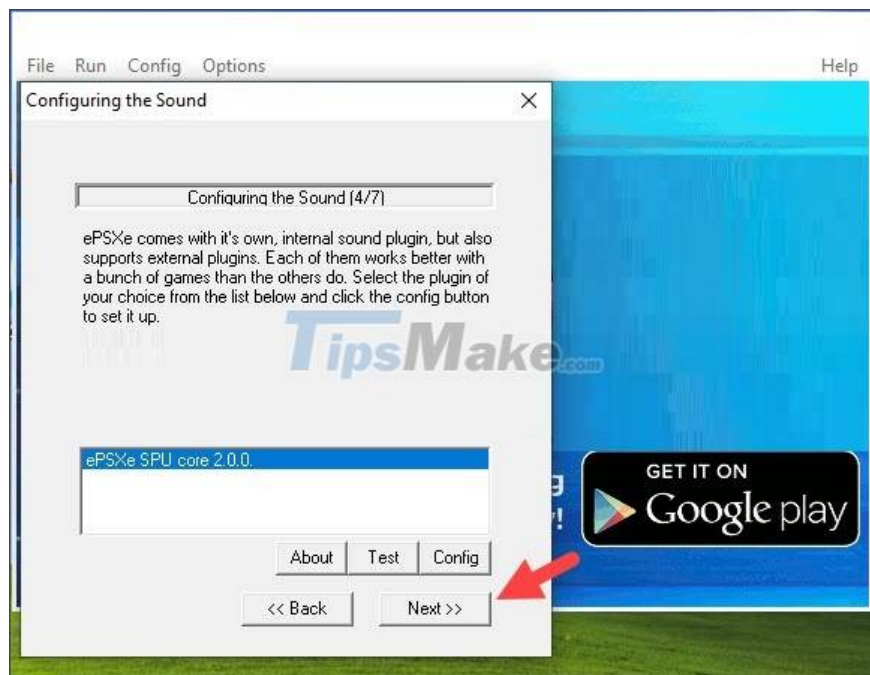
Step 3: You click on HLE Bios (1) => Next (2).



Step 4: You choose ePSXe GPU core 2.0.0 (1) => Next (2).



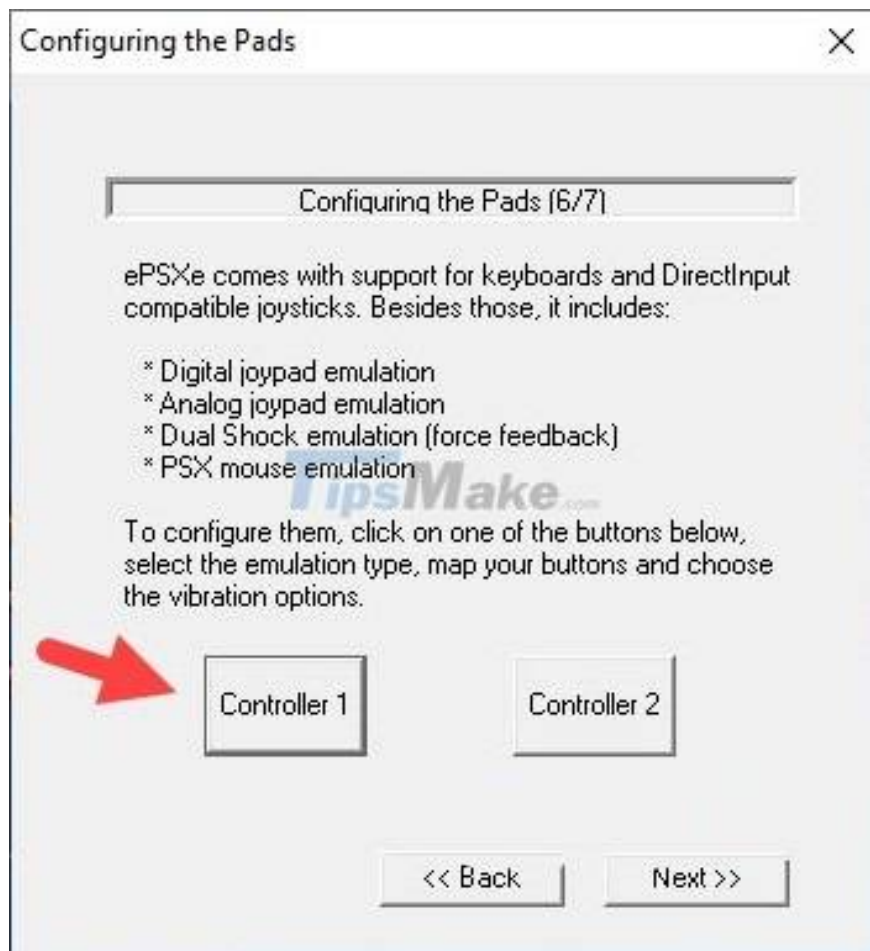
Step 5: Click Next to continue and automatically configure the sound.



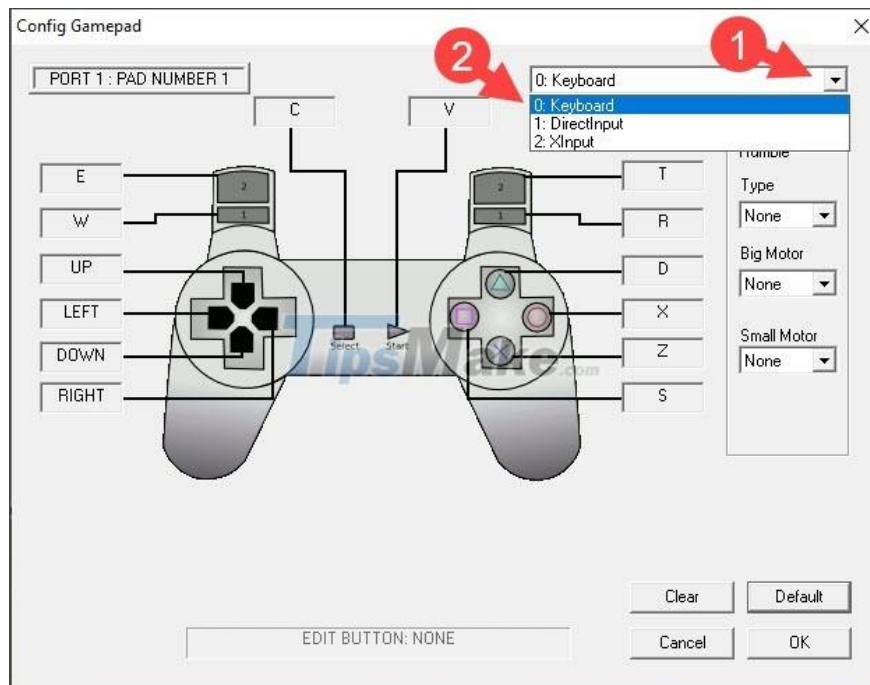
Step 6: You choose ePSXe CDR/W2K core 2.0.0 (1) to select the CD-Rom drive plugin on Windows XP operating systems or higher, and the ePSXe CDR ASPI core 2.0.0 option is for emulators running on the operating system. operating Windows 95/ME. Next, click Next (2) to continue.



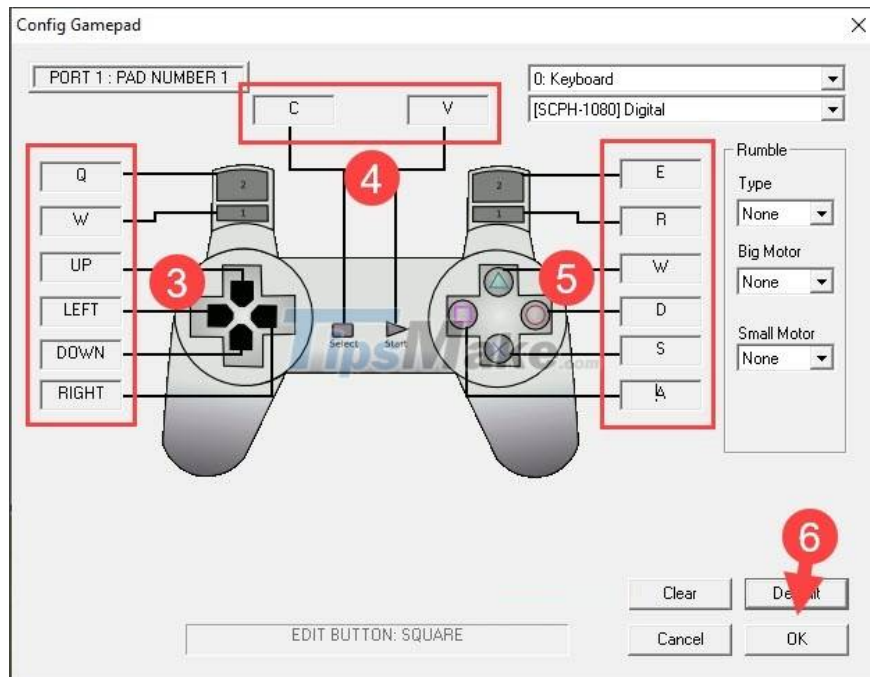
Step 7: You click on Controller 1 to configure the handle on the emulator.



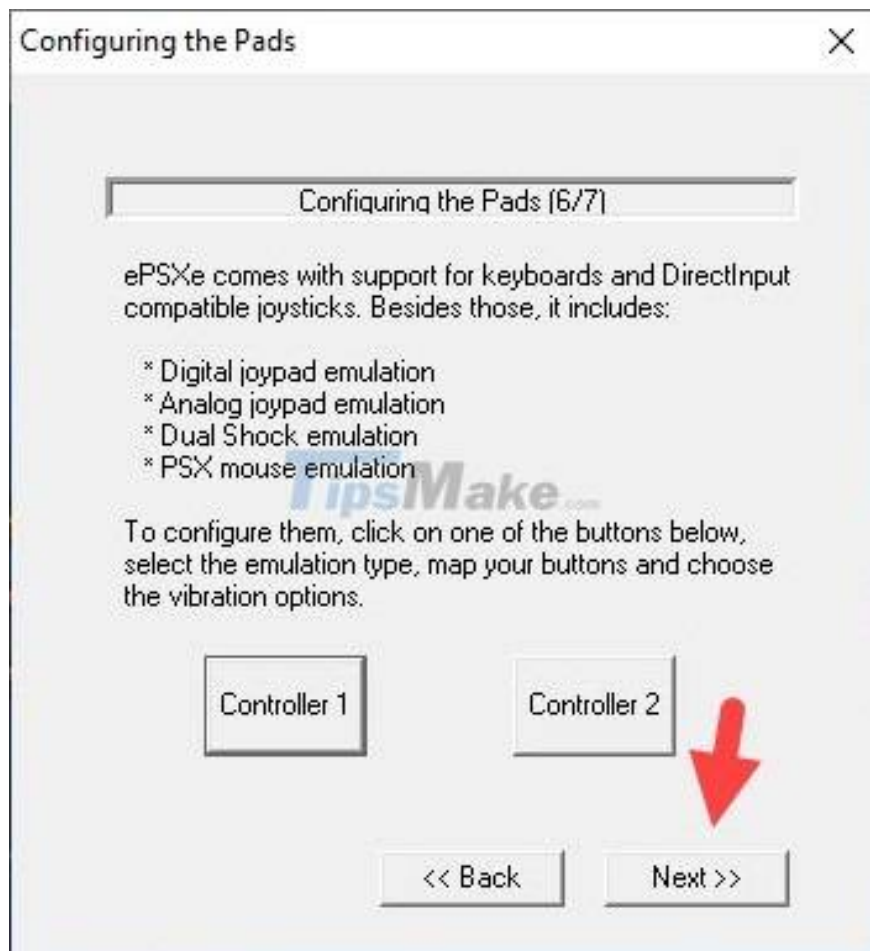
Step 8: You click on the arrow icon (1) => select Keyboard (2).



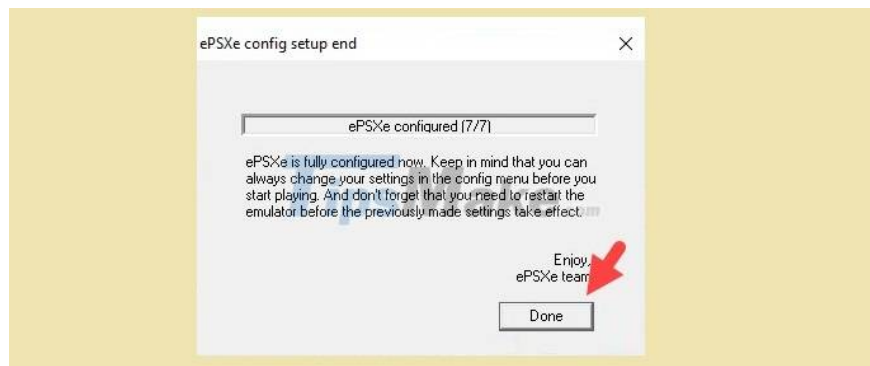
Next, you assign the movement keys and the L1, L2 (3) keys along with the Select, Start (4) function keys ?? XO, R1, R2 (5). Next, click OK (6) to finish.



Next, click Next to go to the next step or click on Controller 2 and follow the steps above to assign keys to the secondary controller.



Step 9: Click Done to complete the setup.



3. Download games for the ePSXe emulator

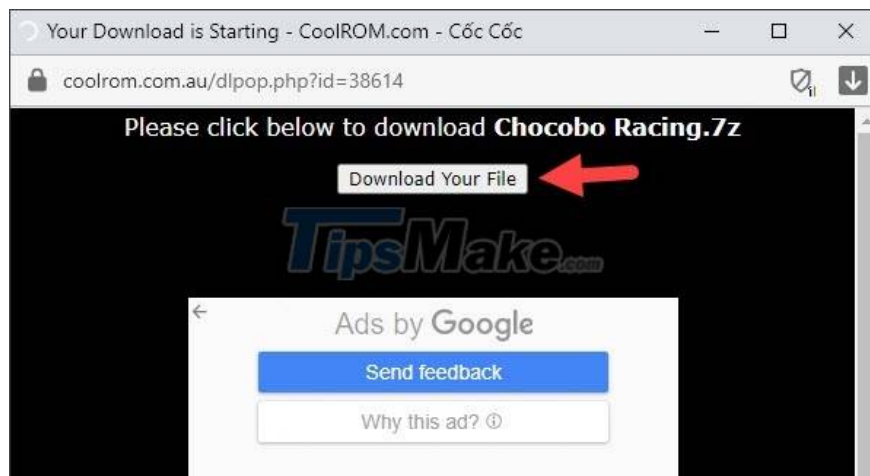
The game file on the ePSXe emulator is a disk file with the extension .BIN, .CUE, .IMG, .ISO... and you can search for the game file on google with the keyword "rom psx" or "rom epsxe". Some reputable ROMs sharing sites that you can use and find games are coolrom, romhustler, romsgame.

Here, I will give an example of how to download Chocobo Racing game ROMs at the following address [here](#).

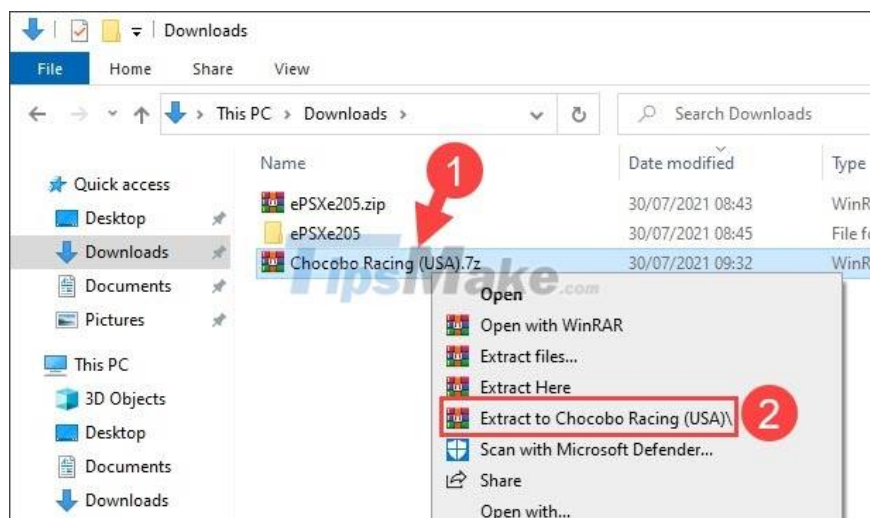
Step 1: Click on Alternative download link.



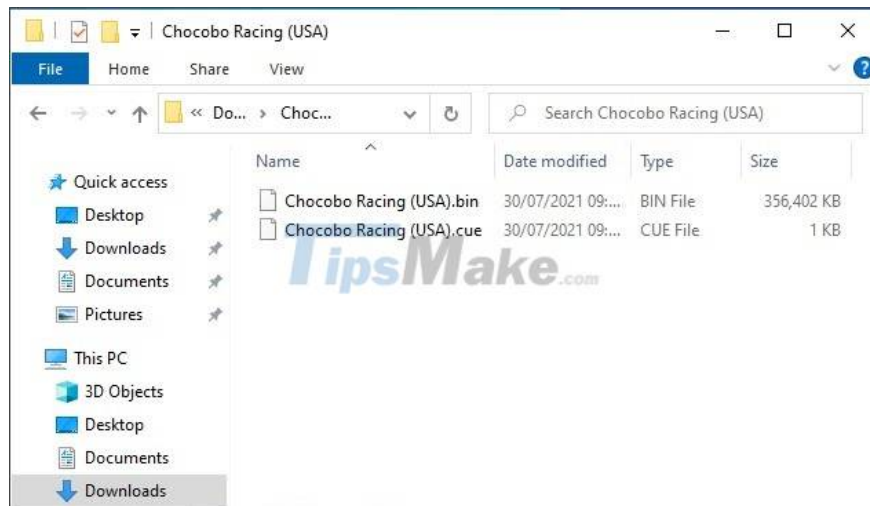
Next, click Download Your File to download.



Step 2: After downloading, you will get a compressed file with .7z extension. Please right click on the compressed file (1) => Extract to (2).



After decompressing, you will receive two files with the extension .BIN and .CUE. You can use ePSXe to open either file.

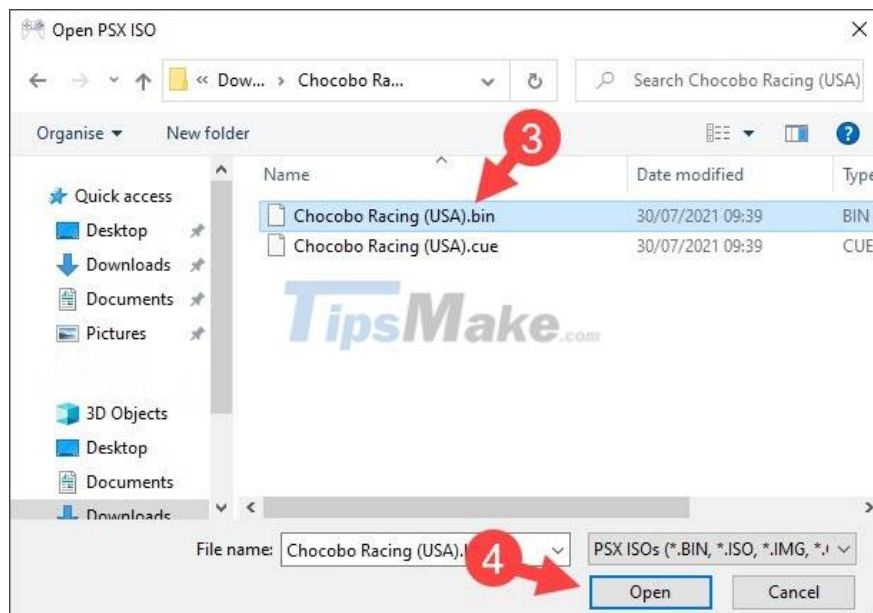


4. Open the game on ePSXe

You open the ePSXe software and click File (1) => Run ISO (2).



Next, you click on the file .BIN (3) => Open (4).



After that, the game will start and the keys you set up work fine are successful.



5. Set resolution and frame rate on emulator

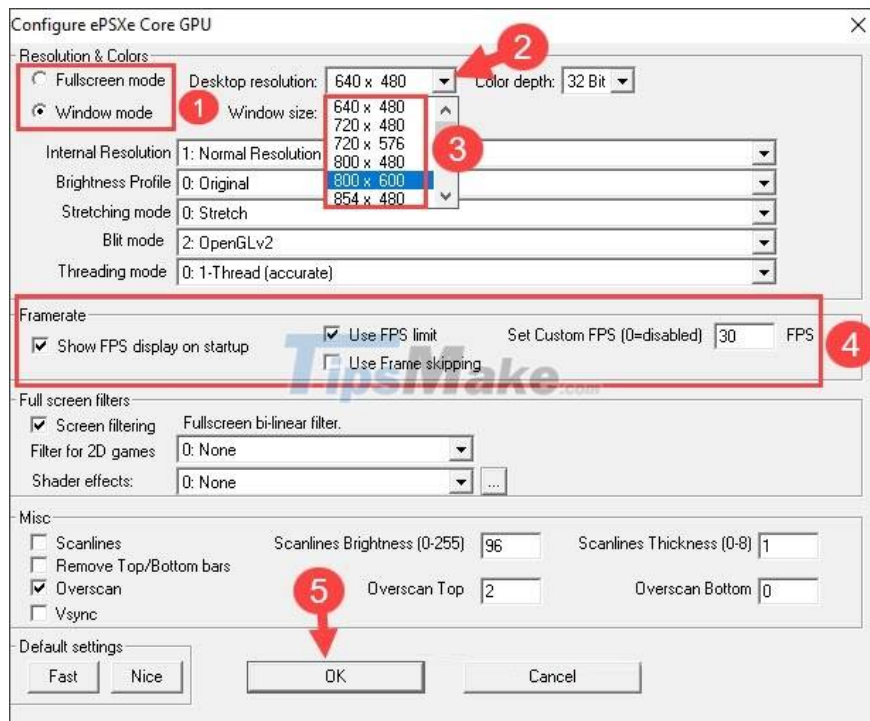
Step 1: On the ePSXe emulator, click Config (1) => Video (2).



Step 2: Set the display mode to full screen (Fullscreen mode) or window display mode (Window mode) (1). The Desktop resolution (2) section will help you change the resolution (3).

The Framerate item (4) will allow you to change and set the frame rate. The Show FPS display on startup option will display the frame rate in the left corner when you open the game. The Use FPS limit option will lock the frame rate and the Set custom FPS option will allow you to set a fixed frame rate.

After the setup is complete, click OK (5) to save the settings you just set.



Through the instructions in the article, you can play your favorite PS1 games on your PC without a PS1 and disc. Good luck!

You finished reading the article "**Steps to emulate PS1 on PC using ePSXe**" edited by the [TipsMake](#) team. We hope this article has provided you with many useful tech tips and tricks. You can search for similar articles on tips and guides. Thank you for reading and for following us regularly.