

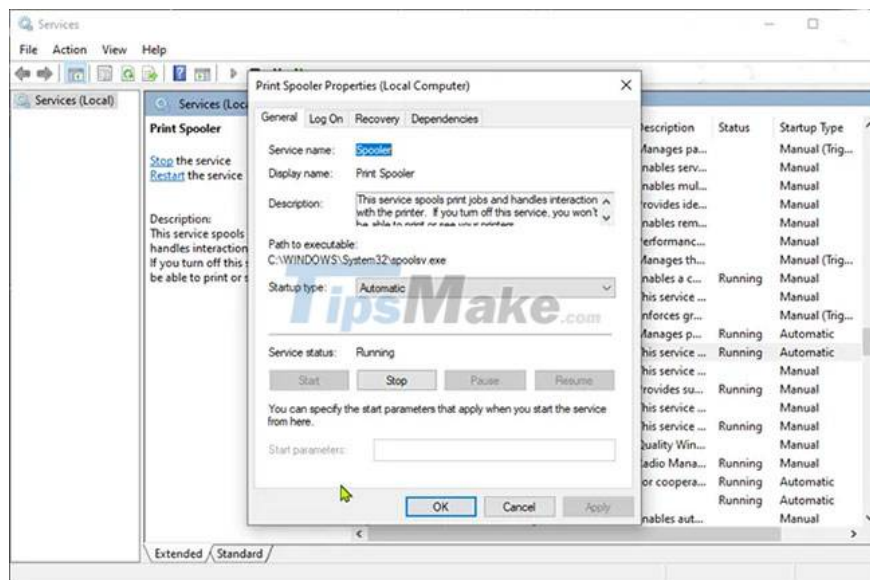
Steps to disable Print Spooler on Windows 10

Print Spooler is software built into the Windows operating system that temporarily stores print jobs in the computer's memory until the printer is ready to print them.

This Service Print Spooler executes print jobs and handles printer interactions. If you disable this service, you will not be able to print or see your printer.

In some cases, you may have to stop and/or restart the service. In this article, **Tipsmake** will show you 3 ways to disable Print Spooler service on Windows 10.

1. Disable Print Spooler service via Services



Proceed as follows:

Step 1: Press **Windows + R** to open the **Run** dialog box .

Step 2: In the **Run** dialog box , type **services.msc** and press **Enter** to open **Services**.

Step 3: In the **Services** window , scroll and find the **Print Spooler** service .

Step 4: Double-click the entry to open this service's properties window.

Step 5: In the properties window, on the **General** tab , go to the second section titled **Service status** and click the **Stop** button to disable the service.

2. Disable Print Spooler service via Command Prompt

Here's how to do it:

Step 1: Open the **Run** dialog box .

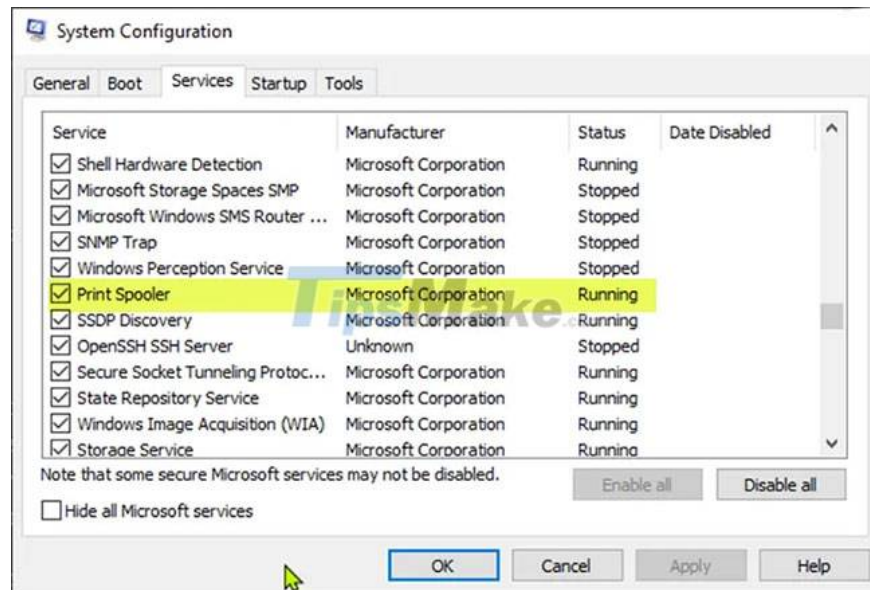
Step 2: In the **Run** dialog box , type **cmd** and then press **CTRL + SHIFT + ENTER** to open Command Prompt with admin rights.

Step 3: In the Command Prompt window, enter the command below and press **Enter** to turn off the Print Spooler service.

```
net stop spooler
```

Step 4: Now, you can exit Command Prompt.

3. Disable Print Spooler service via System Configuration



Do the following:

Step 1: Open the **Run** dialog box .

Step 2: In the **Run** dialog box , type **msconfig** and press **Enter** to open the System Configuration utility.

Step 3: In the launched console, switch to the **Services** tab, the middle tab and look for the Print Spooler service.

Step 4: To disable the Print Spooler service, uncheck the corresponding box, then click the **Apply** button .

Note : A restart of the computer is essential for this method as the changes will be implemented correctly after the reboot.

Hope you are succesful.

You finished reading the article "**Steps to disable Print Spooler on Windows 10**" edited by the [TipsMake](#) team. We hope this article has provided you with many useful tech tips and tricks. You can search for similar articles on tips and guides. Thank you for reading and for following us regularly.
