

Steps to connect Windows computer Bluetooth with speakers, phones, headphones

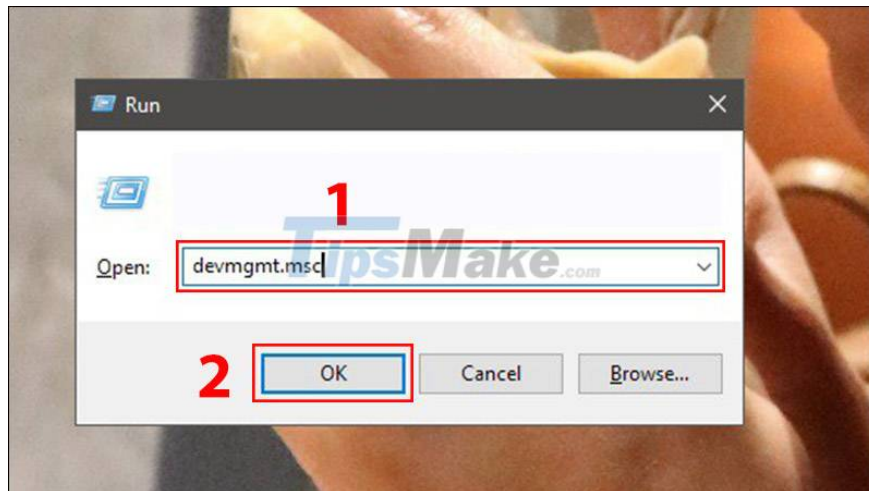
Bluetooth is one of the technologies that helps to connect computers with other devices easily and quickly.

The following article will show you how to connect Bluetooth computers using Windows operating systems to wireless speakers, phones, and headphones .

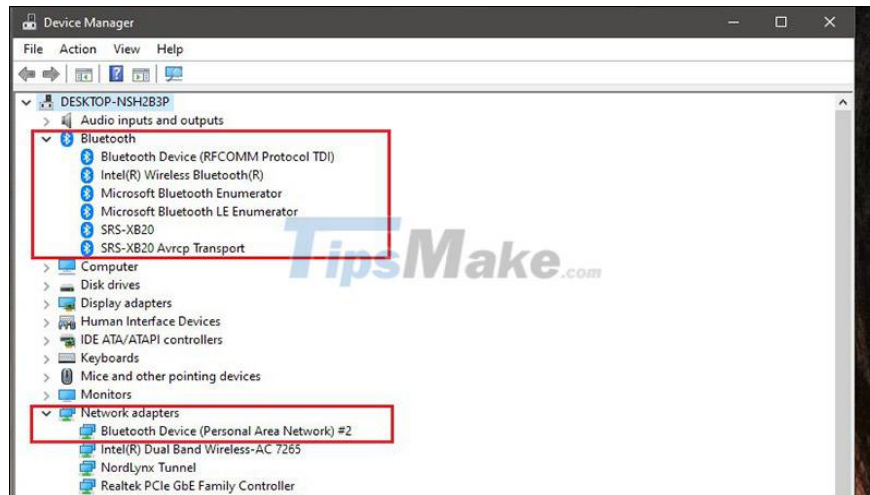
1. How to connect Windows 10 computer Bluetooth to speakers, phones, headphones

Step 1: Check if your computer supports Bluetooth

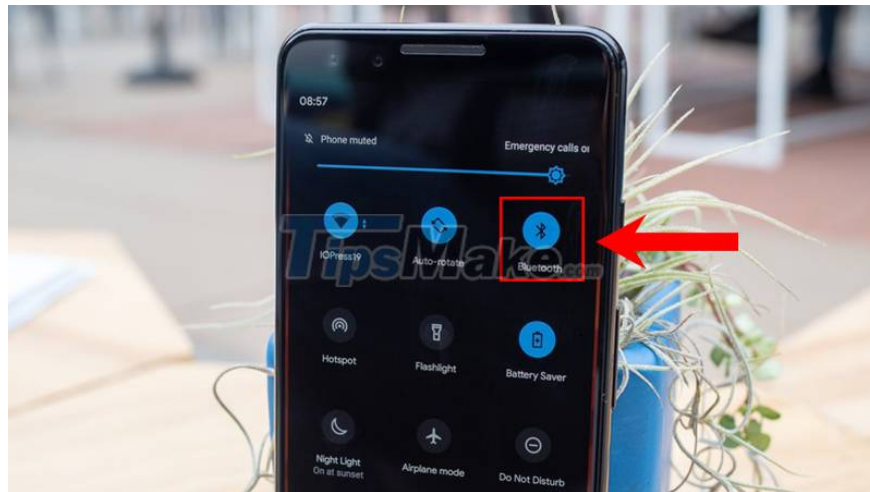
Instructions: First, press the Windows + R key combination to call the Run dialog box, then type "devmgmt.msc" and click OK to access Device Manager.



Once you have entered the Device Manager, see if there is a Bluetooth item in this list of hardware. If so, your computer is already equipped with Bluetooth.



Step 2: Turn on Bluetooth on the devices you want to pair



1. Turn on Bluetooth on your phone: You swipe the screen down from the top to reveal the notification bar. In the quick settings section, click on your phone's Bluetooth to turn on Bluetooth.
2. Turn on Bluetooth on speakers and headphones : You press the power button to start the device. When the device is turned on, Bluetooth will automatically turn on.
3. Turn on Bluetooth on the earbuds : You take the headset out of the case, the Bluetooth feature will be turned on automatically.

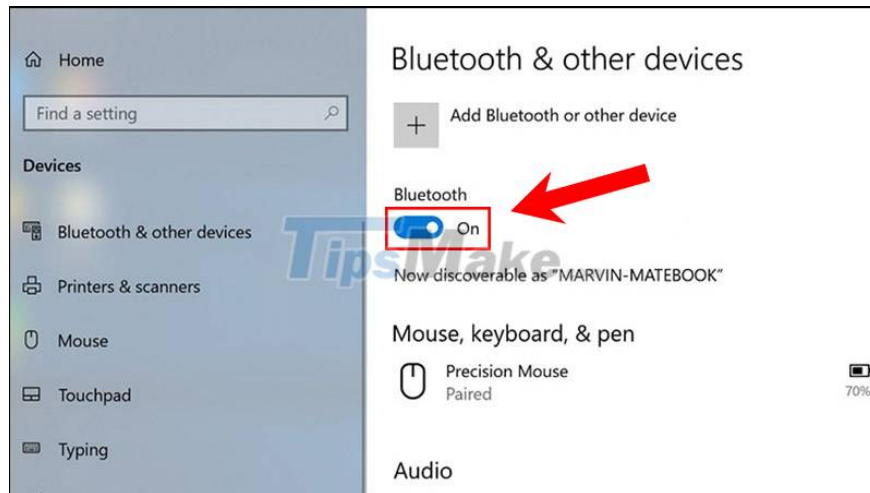
Step 3: Turn on Bluetooth on your Windows 10 computer

Method 1: Turn on Bluetooth in Settings

Follow these instructions in turn:

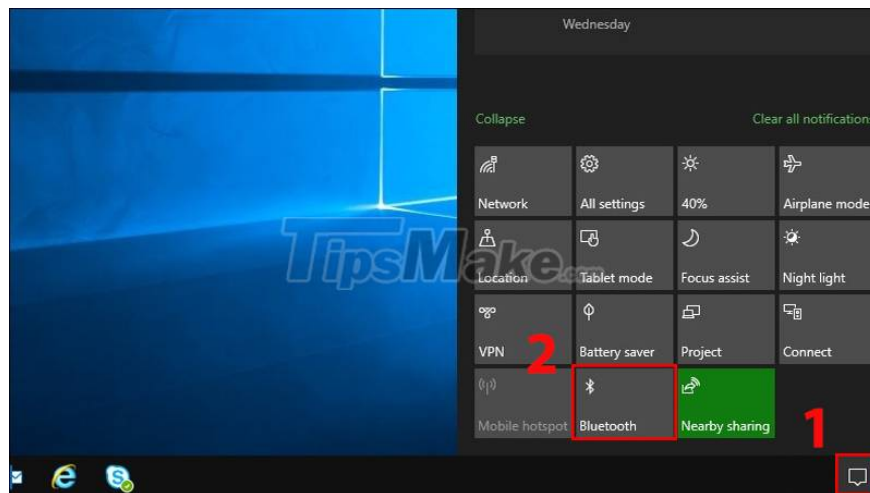
You press the Windows + I key combination to open Settings on your computer > Select Devices.

At the Bluetooth section, click the switch bar to turn on the Bluetooth connection.



Method 2: Turn on Bluetooth on the taskbar

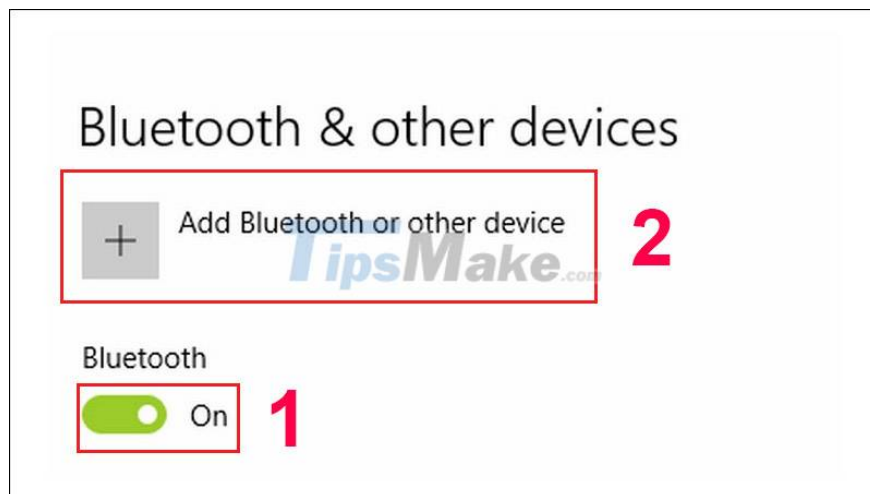
This way is simpler and faster. You select the Notification button in the right corner of the screen > Select Bluetooth.



Step 4: Pairing

First you need to go to Settings (Settings) > Select Devices (Devices). Then you do the following in turn:

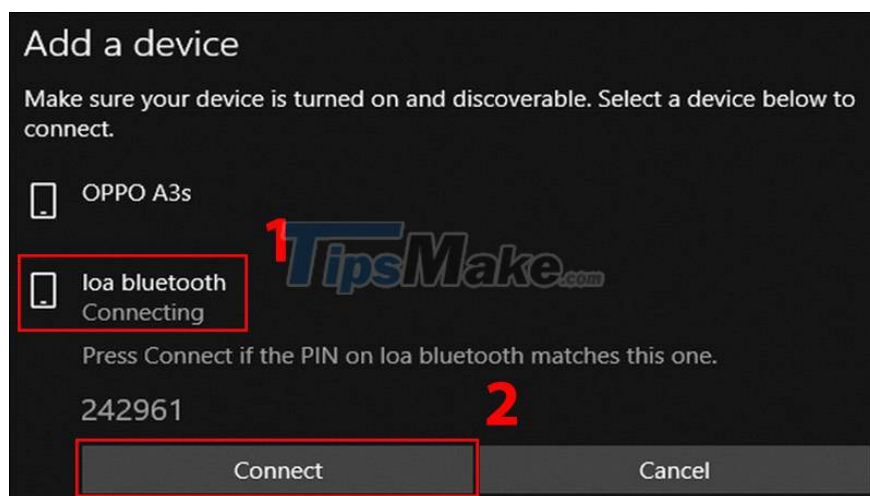
In the Bluetooth & other devices section, you need to make sure that the Bluetooth feature is turned on, then select Add a device (Add Bluetooth or other devices).



Click Bluetooth and wait a moment for the computer to search for the device.



When the search is complete, here will show the device you want to pair, tap on the device name > Select Connect to connect.

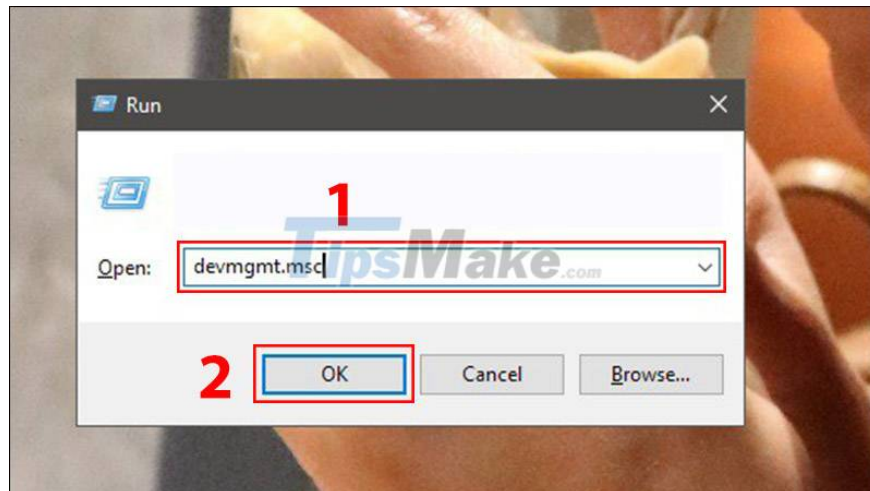


2. How to connect Windows 7 computer Bluetooth to speakers, phones, headphones

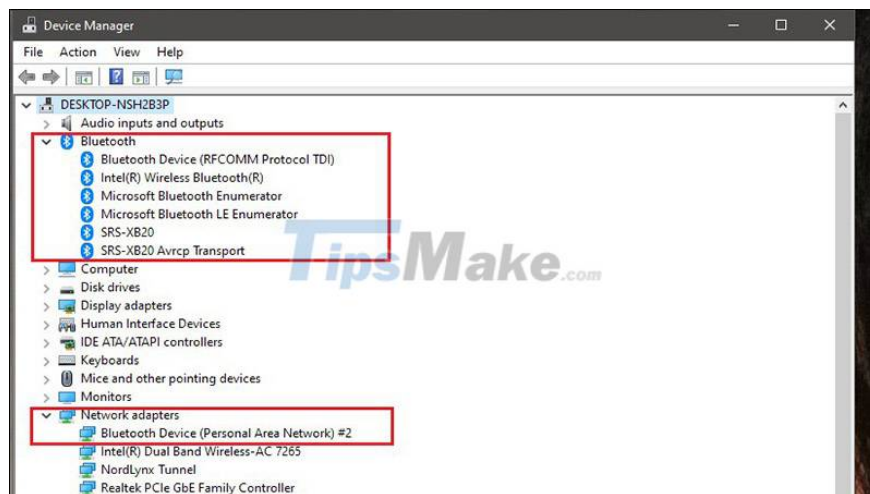
Most computers running Windows 7 are almost not equipped with Bluetooth features, so you need to check if your computer is equipped with Bluetooth first.

Step 1: Check if your computer supports Bluetooth

Instructions: First, press the Windows + R key combination to call the Run dialog box, then type devmgmt.msc and click OK to access Device Manager.



Once you have entered the Device Manager, see if there is a Bluetooth item in this list of hardware. If so, your computer is already equipped with Bluetooth.



Step 2: Turn on Bluetooth on the devices you want to pair

1. Turn on Bluetooth on your phone : You swipe the screen down from the top to show the notification bar. In the quick settings section, click on your phone's Bluetooth to turn on Bluetooth.
2. Turn on Bluetooth on speakers and headphones: You press the power button to start the device. When the device is turned on, Bluetooth will automatically turn on.
3. Turn on Bluetooth on earbuds: You take the headset out of the case, the Bluetooth feature will be turned on automatically.

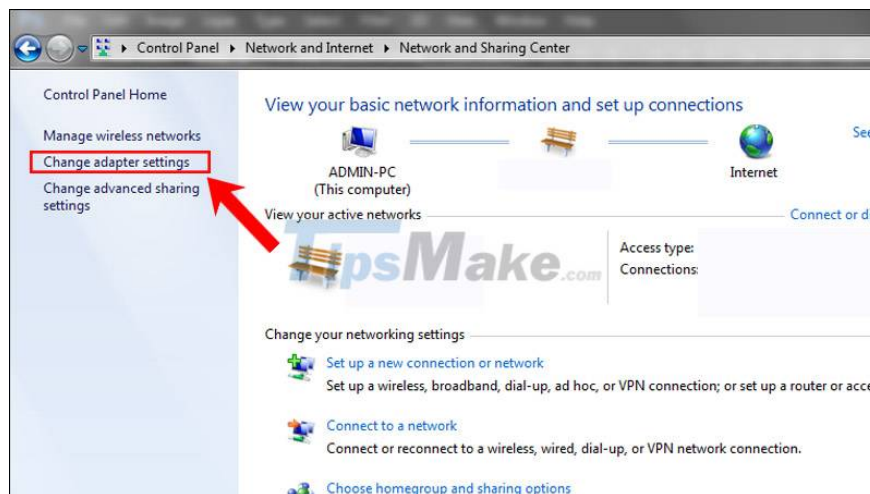
Step 3: Turn on Bluetooth on your Windows 7 computer

Follow these instructions in turn:

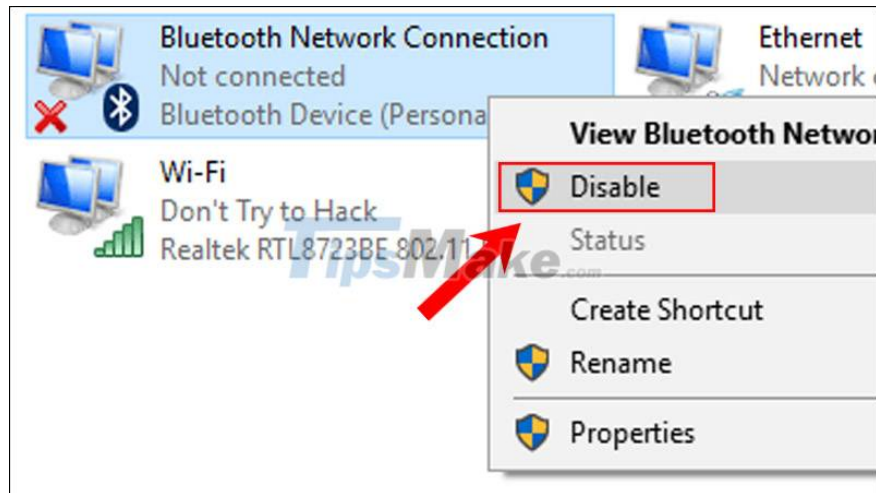
Select Start Menu (Windows icon) in the left corner of the screen > Select Control Panel > Select View network status and tasks.



Select the Change Adapter Settings item.



Right-click Bluetooth Network Connection > Select Disable to enable Bluetooth.



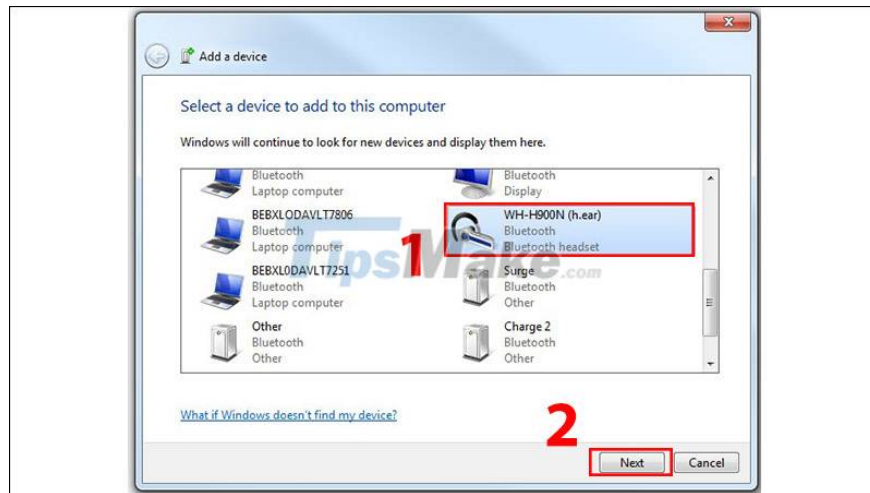
Step 4: Pairing

Follow these instructions in turn:

Click Start Menu (Windows icon) and select Control Panel > Then you select Add a device.



The screen will display a list of devices that can be connected to the laptop and click on the name of the device you want to pair > Select Next.



After the driver loads, the screen will show a successful connection message. Finally select Close and start using.



The above article has shown you how to connect Windows computer Bluetooth to speakers, phones, headphones. Good luck.

You finished reading the article "**Steps to connect Windows computer Bluetooth with speakers, phones, headphones**" edited by the [TipsMake](#) team. We hope this article has provided you with many useful tech tips and tricks. You can search for similar articles on tips and guides. Thank you for reading and for following us regularly.