

# Steps to block Windows 10 from automatically connecting to Wifi

Blocking Windows 10 computers from automatically connecting to Wifi will be one way to ensure the safety of your data when using a shared network in public places.

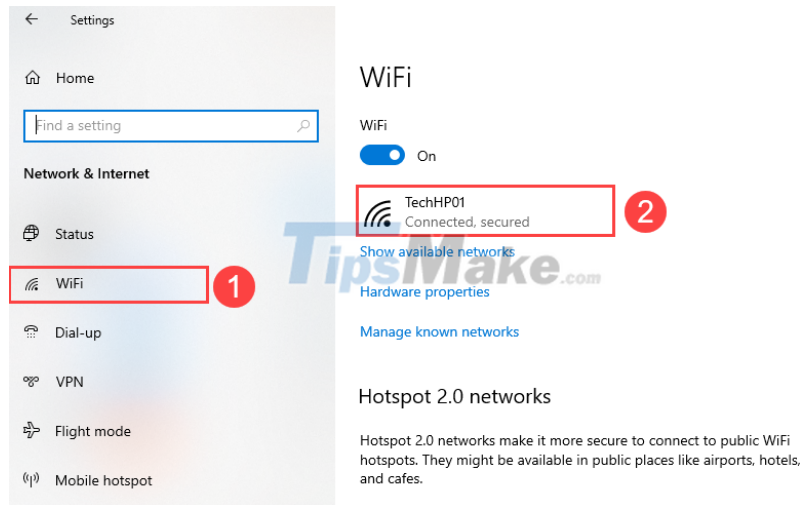
## 1. How to block Wifi from automatically connecting in Settings

Settings on Windows 10 allows you to set up almost all the features of your computer, including Wi-Fi connection.

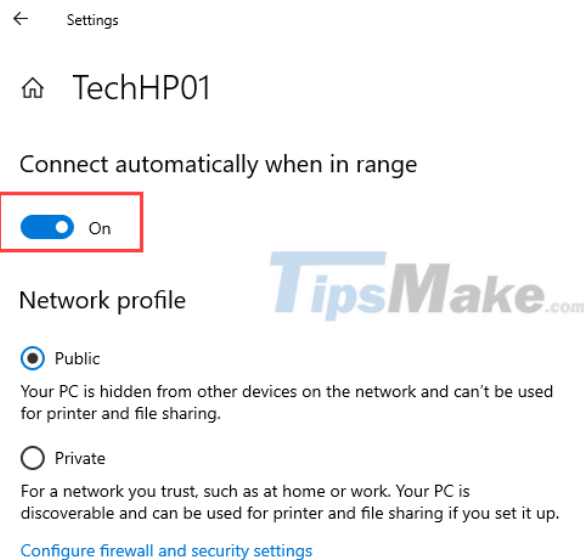
Step 1: Open MenuStart and select the Settings icon (gear shape) to open the settings on your computer.



Step 2: Next, select the Network tab and go to Wifi (1) to customize the settings related to Wifi. To select the Wifi in use, click on the Wifi name that is being connected (2).



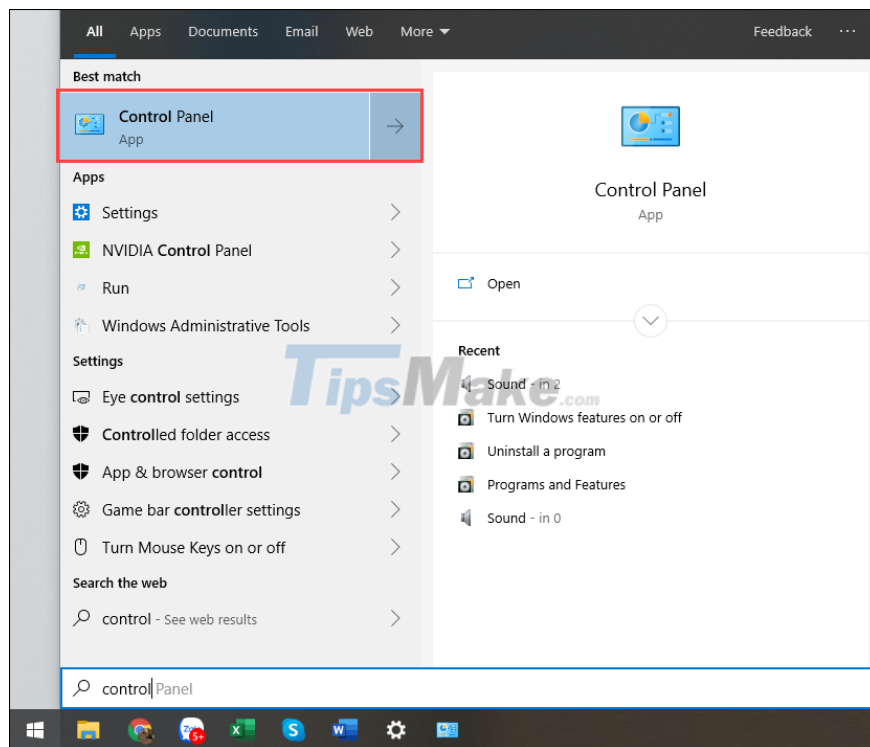
Step 3: At Wifi network settings, you will see Connect automatically when in range. Now, turn off this feature so that the computer does not automatically connect to the Wifi network.



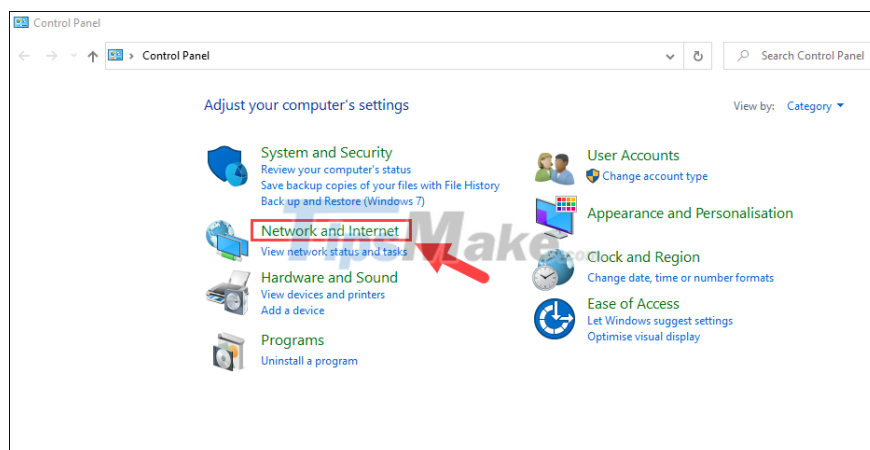
## 2. How to block Wifi from automatically connecting in Control Panel

The Control Panel allows you to customize a variety of computer parameters as well as available features. You can also turn off automatic Wi-Fi connection in Control Panel.

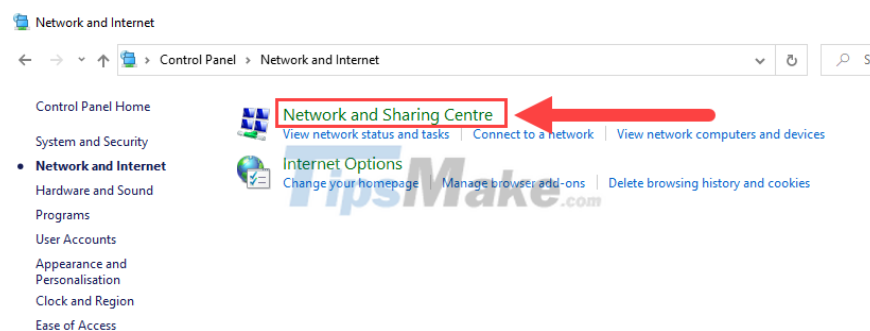
Step 1: Open MenuStart and enter Control Panel to open.



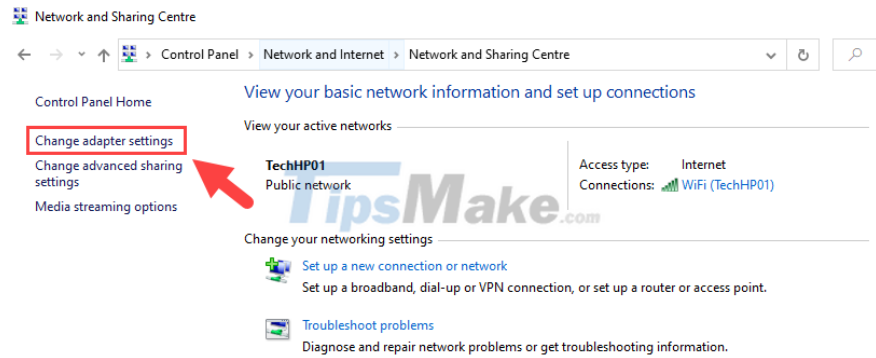
Step 2: In the Control Panel window, select the Network and Internet item.



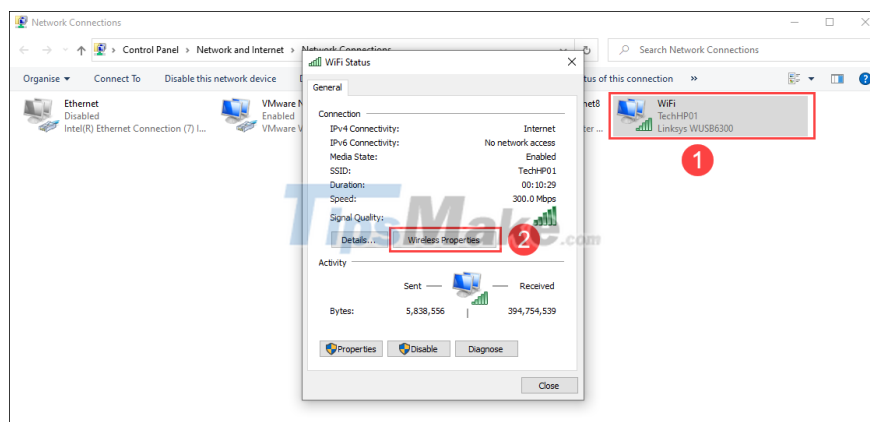
Step 3: Then, select the Network and Sharing Center item to search for the network you are using.



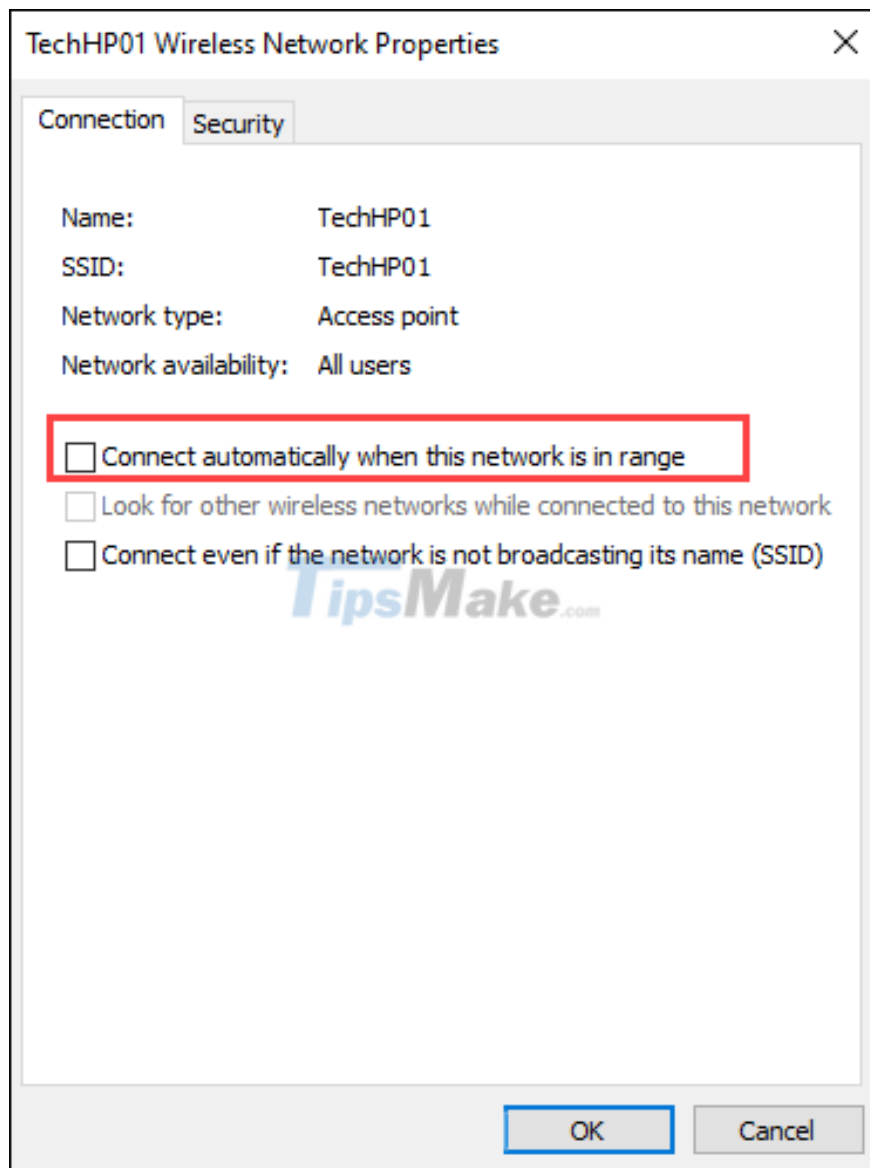
Step 4: To open the network settings being used, select Change adapter settings to view.



Step 5: Now you just need to double-click on the connected Wifi network (1) and select Wireless Properties (2) to view the settings.



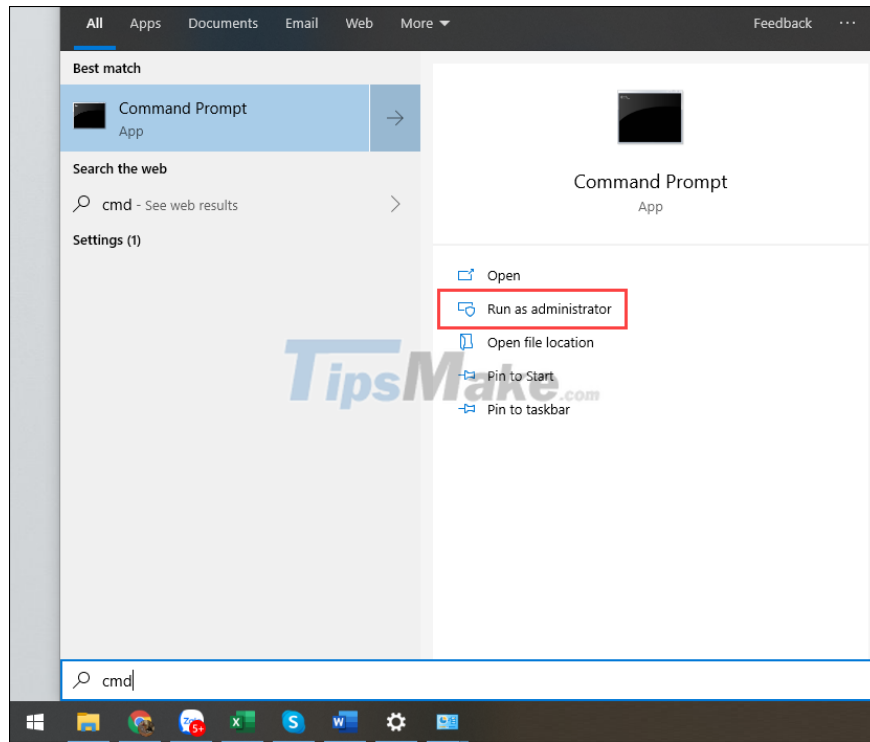
Step 6: To stop connecting to the network automatically, simply uncheck the Connect automatically when this network is in range setting.



### 3. How to block Wifi from automatically connecting in Command Prompt

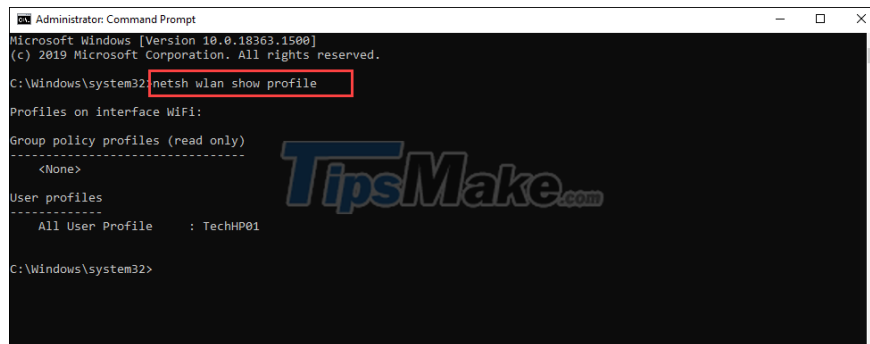
In the Command Prompt, you can also adjust the setting of not connecting to the strange Internet through commands.

Step 1: Open MenuStart, enter Command Prompt and select Run as administrator to open with Admin rights.



Step 2: In the Command Prompt window, enter the command below to see the name of the connected Wifi network.

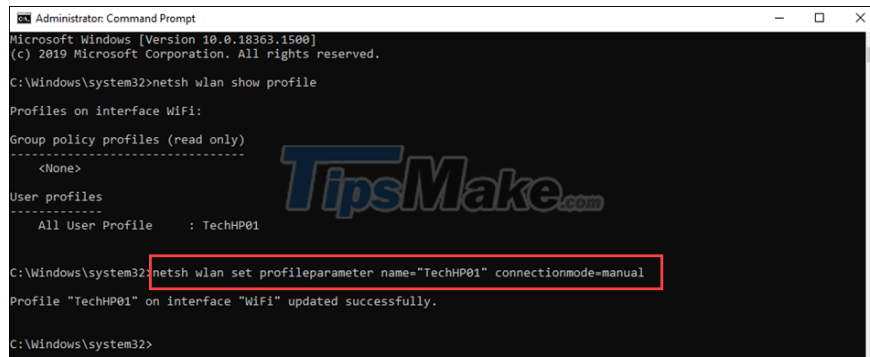
```
netsh wlan show profiles
```



Step 2: After getting the Wifi network name in the All User Profile section, continue to use the following command and change the 'Wifi name' section to the Wifi name in use.

```
netsh wlan set profileparameter name="Wifi name" connectionmode=manual
```

When the command is successful, you will get a Successfully message, you can exit CMD because it's done.



```
Administrator: Command Prompt
Microsoft Windows [Version 10.0.18363.1500]
(c) 2019 Microsoft Corporation. All rights reserved.

C:\Windows\system32>netsh wlan show profile

Profiles on interface WiFi:

Group policy profiles (read only)
-----
<None>

User profiles
-----
All User Profile : TechHP01

C:\Windows\system32>netsh wlan set profileparameter name="TechHP01" connectionmode=manual
Profile "TechHP01" on interface "WiFi" updated successfully.

C:\Windows\system32>
```

In this article, Tipsmake has shown you how to block strange Wifi connections on Windows 10 computers. Have a nice day!

You finished reading the article "**Steps to block Windows 10 from automatically connecting to Wifi**" edited by the [TipsMake](#) team. We hope this article has provided you with many useful tech tips and tricks. You can search for similar articles on tips and guides. Thank you for reading and for following us regularly.