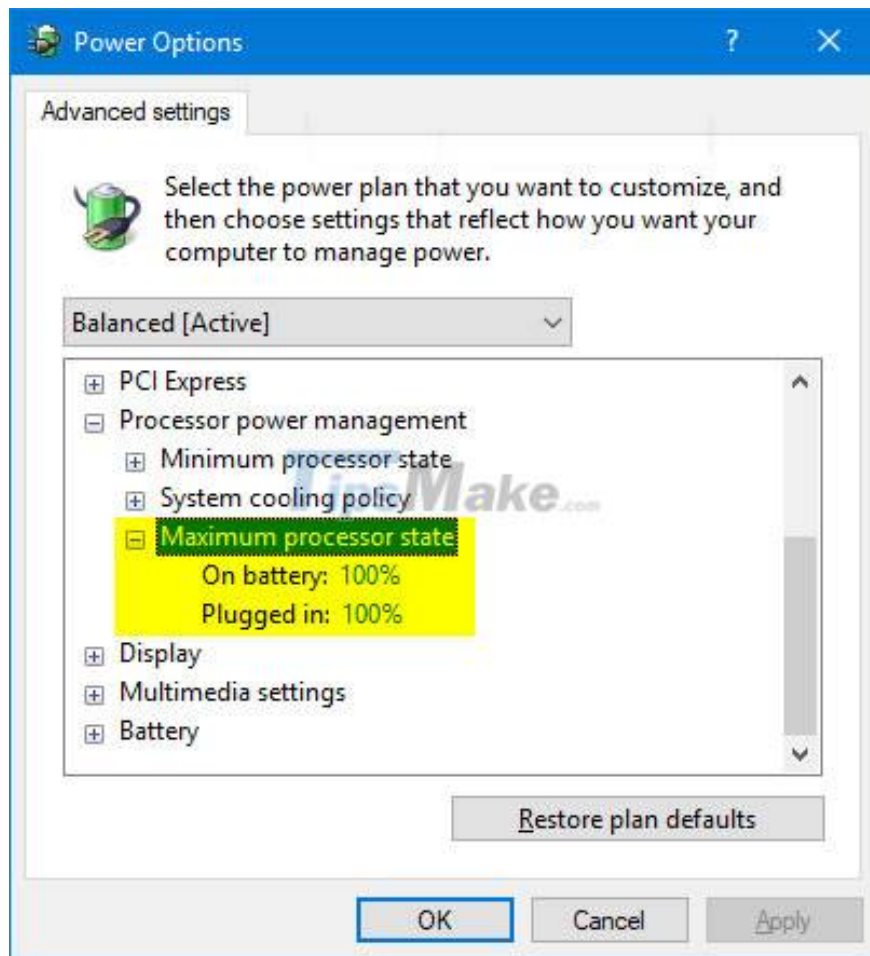


Steps to add/remove 'Maximum processor state' from Power Options in Windows

The Maximum processor state setting in Power Options allows the user to specify a percentage of maximum processor capacity to use. Lower percentages can result in significantly better battery life, but lead to lower performance.

This guide will show you how to add or remove the Maximum processor state setting in Power Options for all users in Windows 7, Windows 8, and Windows 10.

Note: You must be logged in with admin rights to add or remove this setting in Power Options.



Add or remove "Maximum processor state" in Power Options using Command Prompt

Step 1. Open Command Prompt with admin rights.

Step 2. Type 1 of the 2 commands below that you want to use into Command Prompt and press **Enter**.

(Add Maximum processor state)

```
powercfg -attributes SUB_PROCESSOR bc5038f7-23e0-4960-96da-33abaf5935ec -ATTRIB_I
```

OR

(Clear Maximum processor state)

```
powercfg -attributes SUB_PROCESSOR bc5038f7-23e0-4960-96da-33abaf5935ec +ATTRIB_I
```

Step 3. Now, you can close **Command Prompt** if you want.

Add or remove "Maximum processor state" in Power Options using a REG . file

The downloadable .reg files below will modify the DWORD value in the following registry key:

```
HKEY_LOCAL_MACHINESYSTEMCurrentControlSetControlPowerPowerSettings54533251-82be-
```

DWORD property:

1. 1 = Eliminate
2. 2 = Extra

Step 1. Do step 2 (to add) or step 3 (to remove) below depending on what you want to do.

Step 2. To add "**Maximum processor state**" to **Power Options** , download the `Add_Maximum_processor_state_to_Power_Options.reg` file and skip to step 4 below.

Step 3. To remove "**Maximum processor state**" from **Power Options** , download the file `Remove_Maximum_processor_state_from_Power_Options.reg` and go to step 4 below. This is the default setting if supported by your processor.

Step 4. Save the .reg file to the desktop.

Step 5. Double-click the downloaded .reg file to merge.

Step 6. When prompted, click **Run > Yes (UAC) > Yes > OK** to approve the merge.

Step 7. Now you can delete the downloaded .reg file if you want.

You finished reading the article "**Steps to add/remove 'Maximum processor state' from Power Options in Windows**" edited by the [TipsMake](#) team. We hope this article has provided you with many useful tech tips and tricks. You can search for similar articles on tips and guides. Thank you for reading and for following us

regularly.
