

Step by step install Exchange Server 2010

Facing the increasing demands of organizations and businesses in exchanging information, so that they both save costs, operate faster, are more manageable, more reliable and better security. ..

TipsMake.com - **Prior to the increasing requirements of organizations and businesses in information exchange, so that both saving costs, operating faster, more manageable, more reliable and guarantee For better confidentiality** , Microsoft has officially upgraded and expanded and launched Exchange Server 2010 version with outstanding advantages:

1. **Flexible and reliable.** Besides deploying on servers of organizations and businesses like previous versions, now, you have another deployment solution, which is hosting at Microsoft data center (Exchange Online). These two solutions can be coordinated simultaneously.
2. **Improvements in storage capabilities** also help Exchange Server 2010 be deployed more flexibly. Besides storage solutions with Storage Area Networks (SAN), you can also choose the Direct Attached Storage (DAS) solution with SATA disk technology. One of the goals of designing Exchange Server 2010 is to meet the ability to deploy email databases and log files only on one SATA disk. Moreover, thanks to the support of consistent deployment on a 64-bit operating system platform, Exchange Server 2010 significantly reduced reading time compared to previous versions.
3. **The availability and reliability** of the database system is also a factor to be improved on Exchange Server 2010. In addition, there are quite a number of administrative tools that are integrated and upgraded and simplified, helping to save Save time and reduce administrative costs by up to 20%.
4. **Access anywhere.** Improvements on Exchange Server 2010 help users improve work efficiency. With this new version, users are free to use all forms of information exchange such as email, voice mail, chat . with the highest security mechanisms on most operating system versions, browsers web and device. Users can use their inbox to perform almost every exchange on the information channel. Exchange Server 2010 helps users increase productivity, easily collaborate with each other thanks to advanced features.
5. **Mailbox management tools** make it easy for users to organize the contact information they receive each day. Exchange 2010 attaches the ability to automatically organize contact information by subject; Integrated messaging support provided by Microsoft Office Communications Server 2007 R2 and SMS in Outlook Web Access. From there, users are allowed to choose to use a variety of communication tools wherever they can log in to Web mail.
6. **Unified Messaging (Unified Messaging)** with an important emphasis is to integrate improvements on voice mail. With this new version, users can handle voice mail as a way to handle regular mailboxes with tools like Microsoft Outlook or Outlook Web App.
7. **Protection and compliance.** With the development of the Internet and the popularity and importance of email systems today, the protection of email data is a core requirement when you choose a suitable email solution deployed in the unit. mine. Exchange 2010 provides integrated control and protection tools, helping you to simplify and automate email security activities.
8. **The new IRM integrated email protection rules** (Information Rights Management) help you protect sensitive business information. You can automatically apply IRM policies for both regular email and voice

mail.

9. **New integrated policy platform on Exchange 2010** allows administrators to identify, deploy and automate email data storage operations. Besides the general policies of the system, users can also choose and apply the appropriate policies themselves. With a highly flexible mechanism, administrators can automatically or decentralize their employees to secure their own data. In addition, with centralized management, blocking, limit, encryption . Exchange 2010 maximizes the ability to protect user information.

2. System requirements

To install Exchange Server 2010 Standard or Enterprise, you need to ensure the server meets the minimum software and hardware system configuration as follows:

Ingredient

Request

Operating system

Windows Server 2008 SP2 64-bit, Windows Server 2008 R2 64-bit

Processor

Intel EM64T, AMD 64

RAM memory

8 GB with Exchange Server running roles simultaneously: Mailbox, Client Access, Hub Transport, plus 5 MB corresponding to each user mailbox

Hard disk

1.2 GB used to install Exchange Server,
200 MB for system drive,
500 MB uses to store transport queues for the Edge Transport server or Hub Transport server,
NTFS filesystem

Installation drive

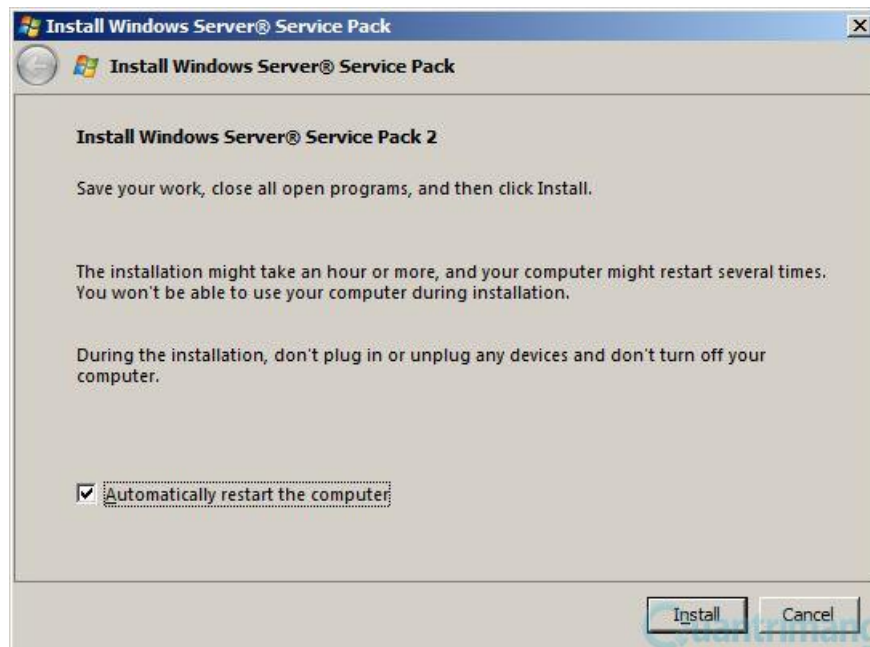
DVD-ROM

3. Update the required components before installing Exchange

3.1. Install hotfixes for Windows Server 2008 SP2

After completing the installation of Windows Server 2008 64-bit Standard or Enterprise on an Exchange Server 2010 server, download Service Pack 2 of this operating system at www.microsoft.com. Next, run the downloaded file and follow the instructions for installing SP2 to the server (Figure 1-1).

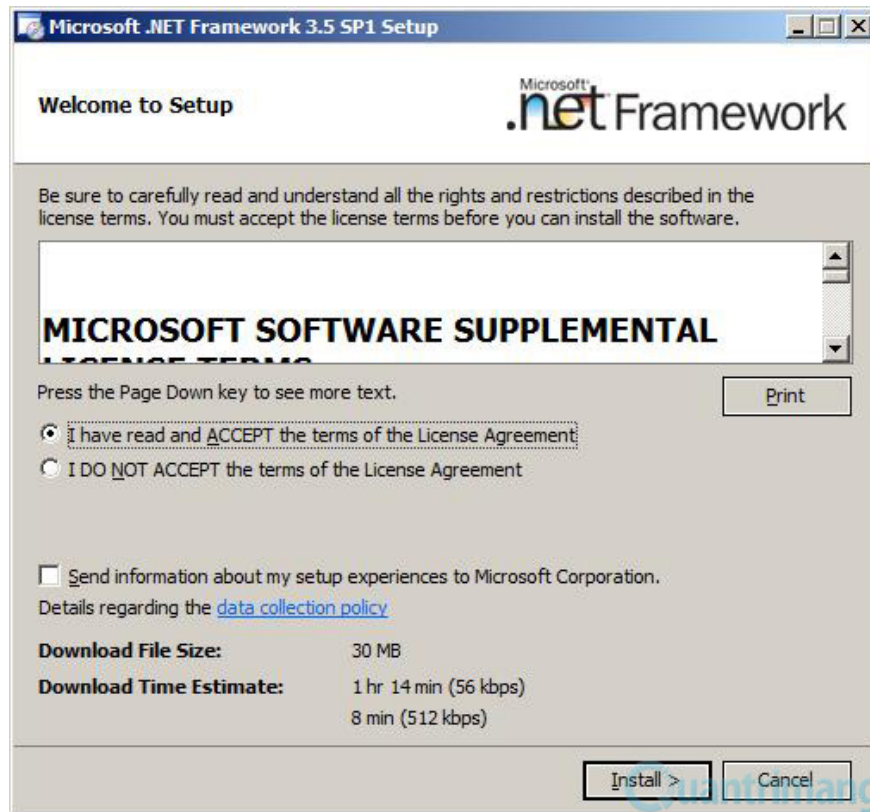
Next, you install Exchange 2010 SP1 hotfixes for Windows Server 2008 SP2, including update packages such as: KB977624, KB979744, KB979917, KB973136 and KB977592.



Install Windows Server 2008 Service Pack 2

3.2. Install .NET Framework 3.5 SP1 and necessary components

Before installing Exchange Server 2010 on the server, you need to install the necessary components on Windows Server 2008 SP2. The first is the .NET Framework 3.5 SP1. Once successfully downloaded from the www.microsoft.com website, run the installation file and follow the instructions to install the .NET Framework 3.5 SP1 on the server.

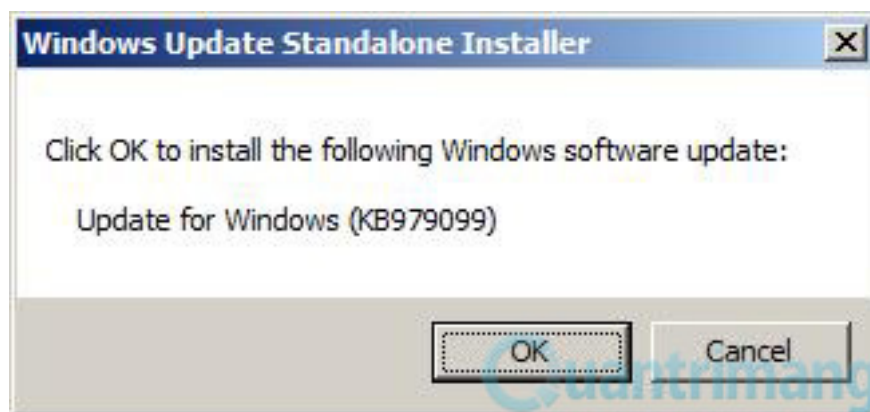


Install the .NET Framework 3.5 SP1

Next, install the Remote Management (WinRM) 2.0 and Windows PowerShell V2 components on the server. To do so, download the KB968930 update package and install it on the server.

With the Exchange server taking on the Hub Transport or Mailbox roles, you need to install the Microsoft Filter Pack. With Exchange Server 2010 SP1, download Microsoft Office 2010 Filter Pack and install it on the server.

Besides, .NET Framework 3.5 Family Update 64-bit and KB979099 update package also need to be downloaded and installed on the server.

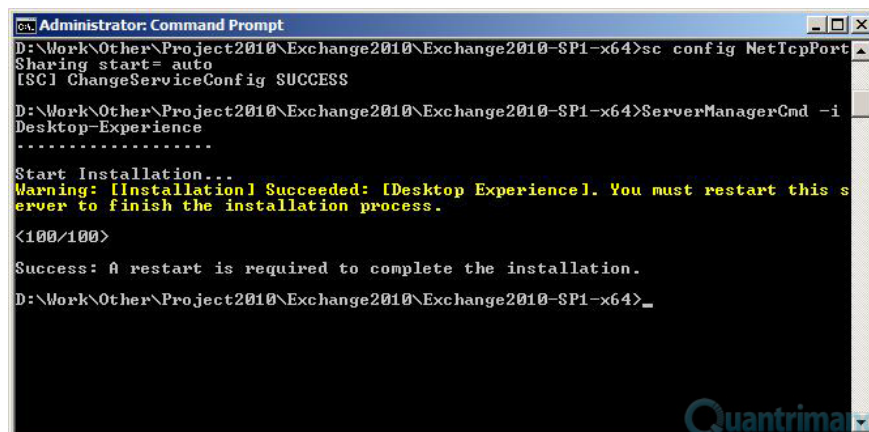


Install KB979099 update package on the server

Finally, move to the Scripts folder in the Exchange Server 2010 installation source to perform the installation of the necessary components for the operating system:

```
sc config NetTcpPortSharing start = auto
ServerManagerCmd -i Desktop-Experience
```

These commands are executed on the server that accepts Client Access, Hub Transport, Mailbox, and Unified Messaging roles:



```
Administrator: Command Prompt
D:\Work\Other\Project2010\Exchange2010\Exchange2010-SP1-x64>sc config NetTcpPortSharing start= auto
[SC] ChangeServiceConfig SUCCESS
D:\Work\Other\Project2010\Exchange2010\Exchange2010-SP1-x64>ServerManagerCmd -i Desktop-Experience
.....
Start Installation...
Warning: [Installation] Succeeded: [Desktop Experience]. You must restart this server to finish the installation process.
<100/100>
Success: A restart is required to complete the installation.
D:\Work\Other\Project2010\Exchange2010\Exchange2010-SP1-x64>_
```

Install the necessary components for the operating system

3.3. Install Active Directory Domain Services and related services

To prepare the service infrastructure for Exchange Server 2010, you need to install the necessary services on Windows Server 2008. The first is Active Directory Domain Services. To install, open the **Server Manager** window. In the left pane, click on the **Roles** item. In the corresponding right pane, click the **Add Roles** link.

In the **Select Server Roles** window, click **Active Directory Domain Services** and follow the instructions screen to install this service on the server.

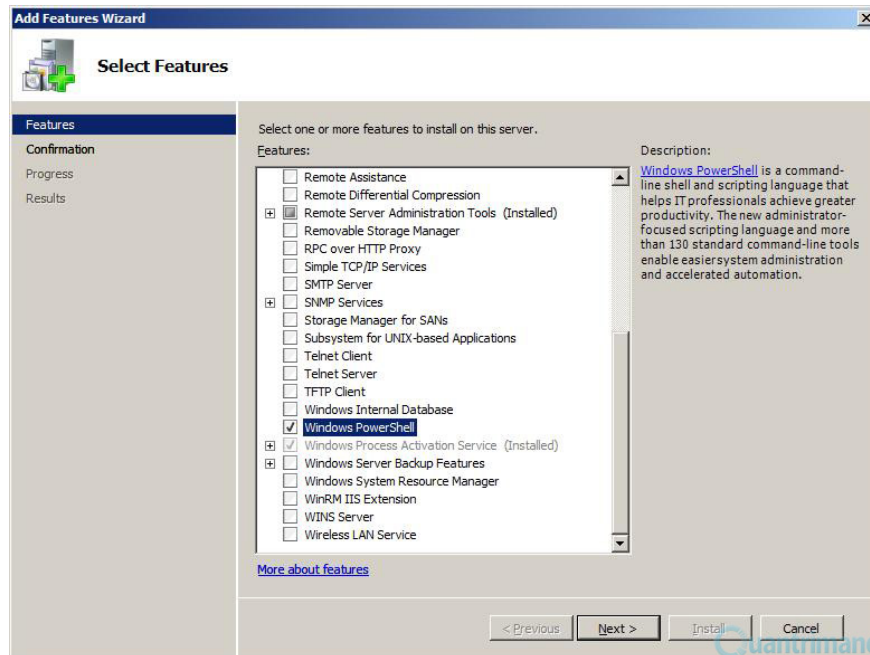
Hint: Refer to the *Windows Server 2008 Administration* book for details on how to install and administer Active Directory Domain Services.

Next, with **Active Directory Lightweight Directory Services** , you also use the **Server Manager** window and perform the same steps to install this service on the server.

Web services also need to be installed on Windows Server 2008. To do so, you also select the **Web Server (IIS)** entry in the **Server Manager** window. After successfully installing Web Server (IIS), you need to add components for this service. To do so, in the **Server Manager** window, click the installed **Web Server (IIS)** service, and click the **Add Features** link. Next, in the **Select Role Services** window, click **Static Content Compression** and **Dynamic Content Compression** items , and follow the instructions screen to add components to the Web Server (IIS).

With **Windows Process Activation Service** and **Windows PowerShell** , you install on the server by selecting Features in the left pane of the **Server Manager** window. Also, in the right pane, click the **Add Features** link.

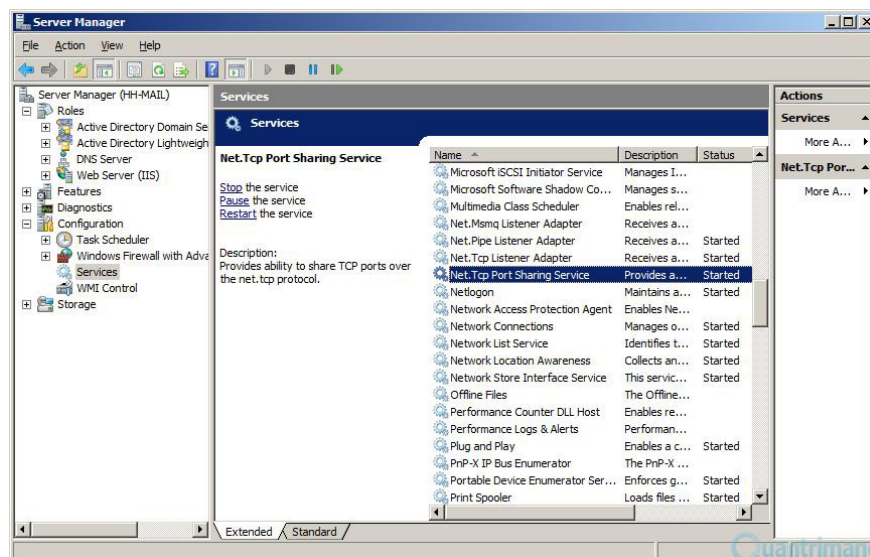
In the **Select Features** window, check the two items and follow the instructions screen to add to the server.



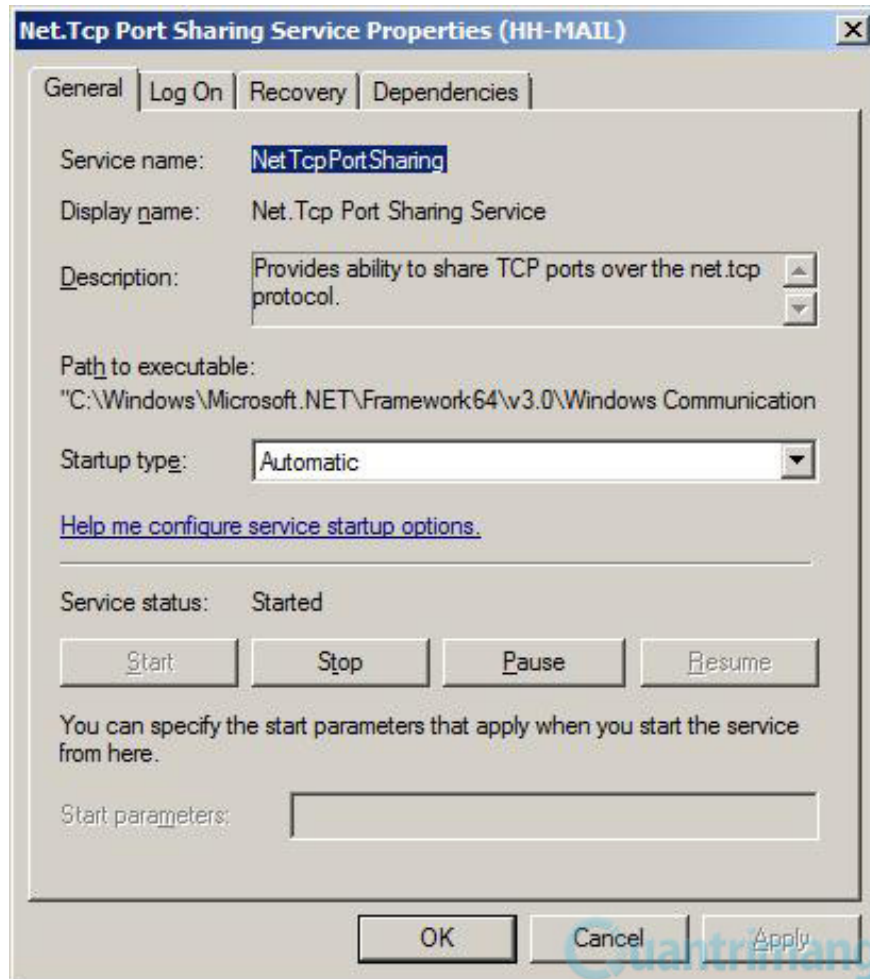
Install Windows Process Activation Service and Windows PowerShell

With Net. Tcp Port Sharing Service, you need to make sure this service automatically starts the system. To configure, expand the **Configuration** section in the left pane of the **Server Manager** window, select **Services**. Also, in the right pane, double-click the **Net** item . **Tcp Port Sharing Service**.

In the **Net** dialog box . **Click Port Sharing Service Properties**, in the **Startup type** section, click the arrow and select **Automatic** service startup type. After done, press the **OK** button.



Open the Net services properties window. Tcp Port Sharing



Switch to service startup mode with the system

4. Install Exchange Server 2010

After completing the preparation, proceed to install Exchange Server 2010 according to the following steps:

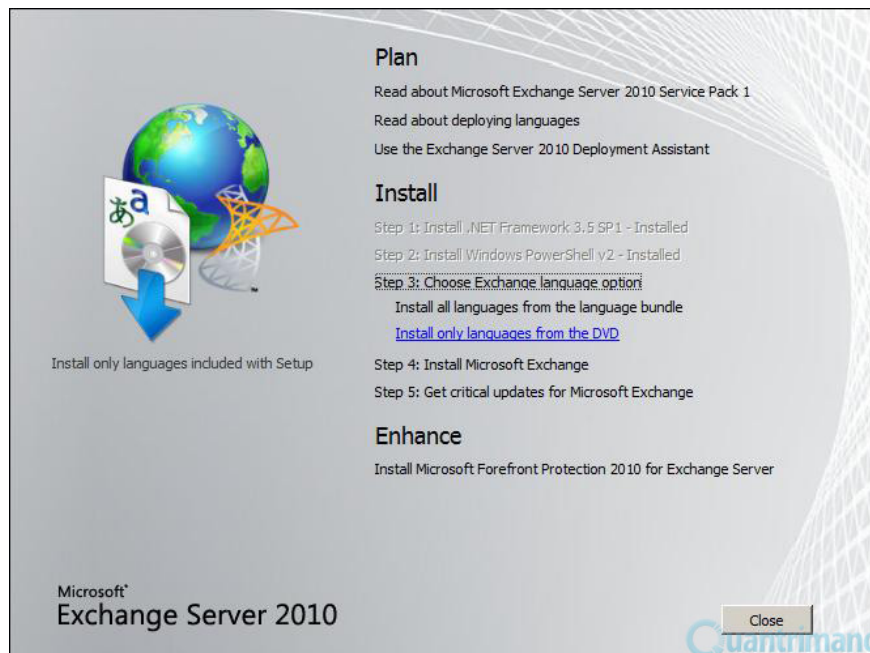
1. Launch the Exchange Server 2010 installation program. Soon, the Exchange Server 2010 installation wizard screen will automatically appear.
2. Here, click on the **Step 3: Choose Exchange Language Option link** .



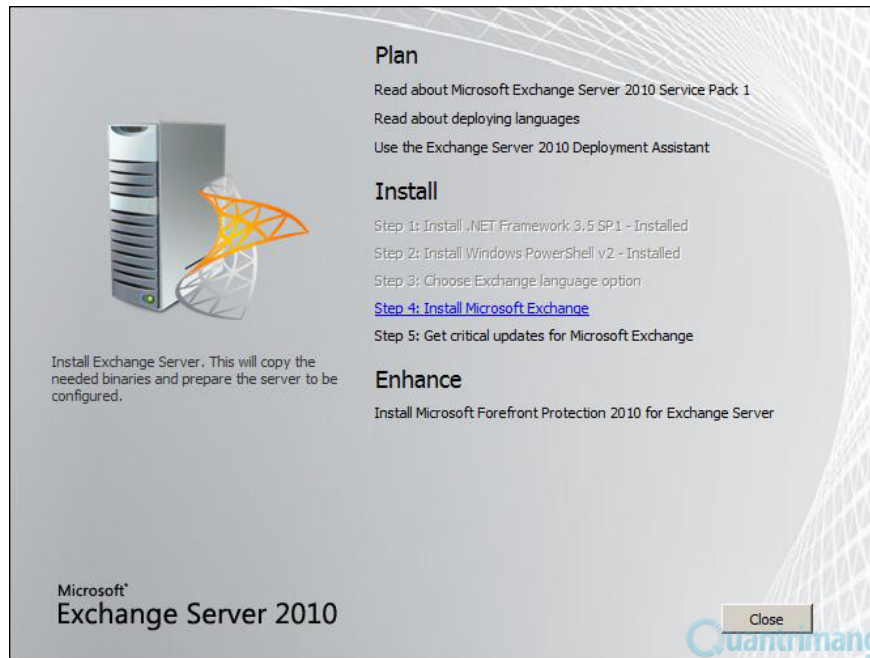
Run the Exchange Server 2010 installation program

Next, click the appropriate option to install languages ??that support Exchange deployment, such as **Install only languages ??from the DVD** .

3. After completing the language-related installation, click the link **Step 4: Install Microsoft Exchange** .

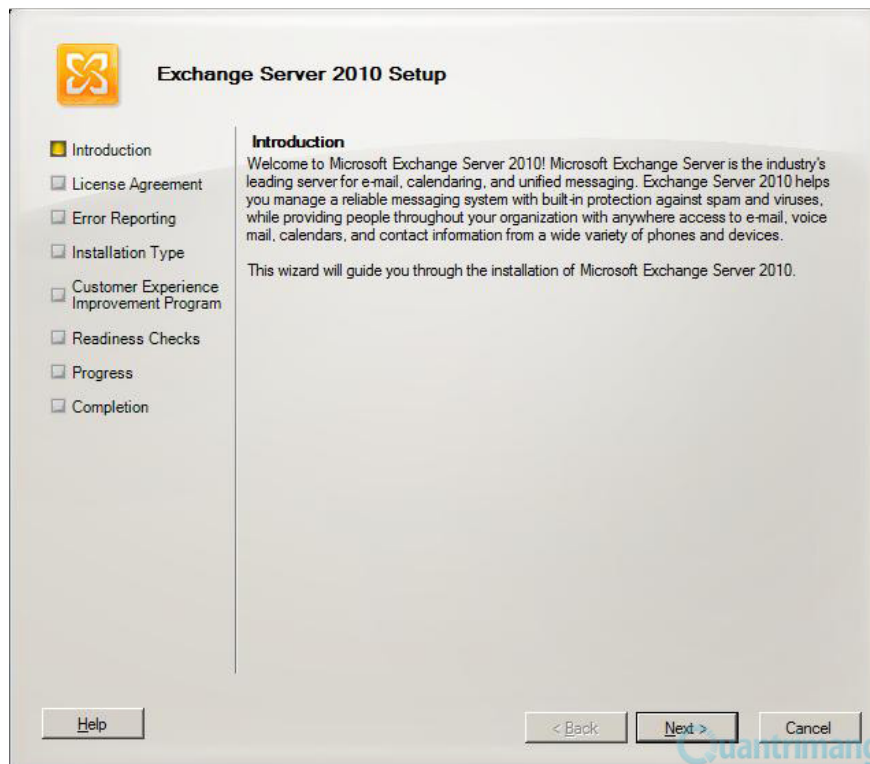


Install language options



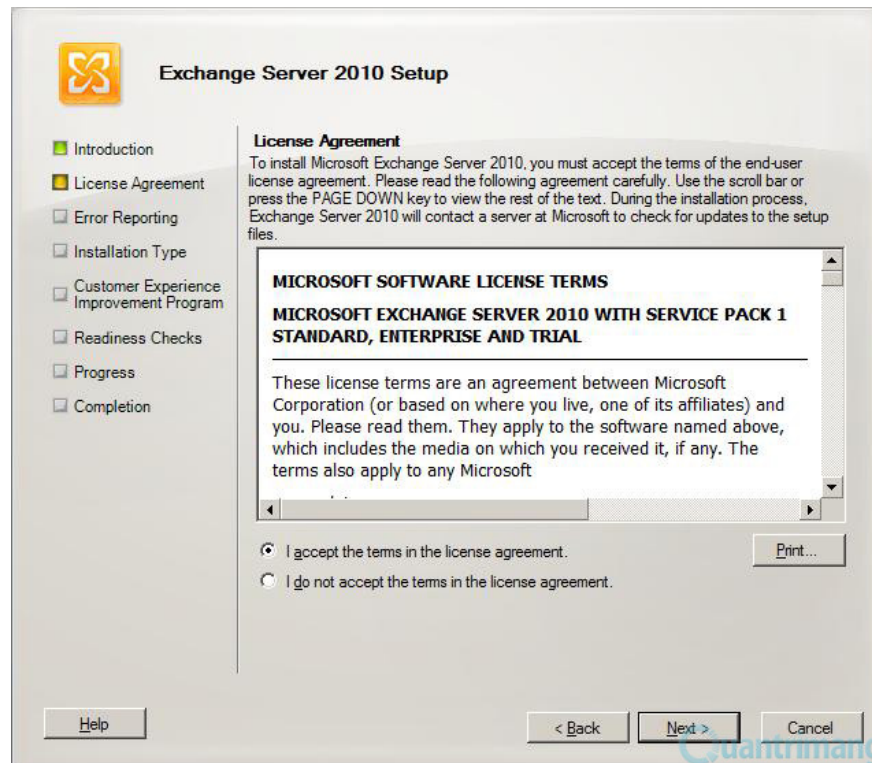
Install Exchange Server 2010

4. In the **Introduction** of the **Exchange Server 2010 Setup** screen , look at the introductory information about Exchange Server 2010 and click the **Next** button.



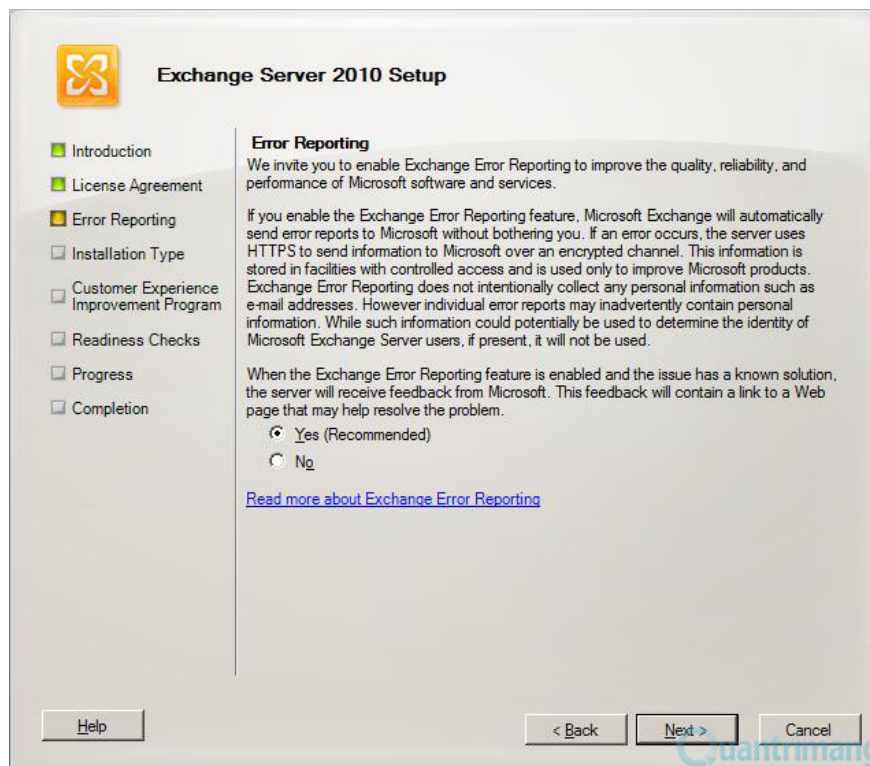
Introduction to Exchange Server 2010

5. In the **License Agreement** screen, select **I accept the terms in the license agreement** and click the **Next** button.



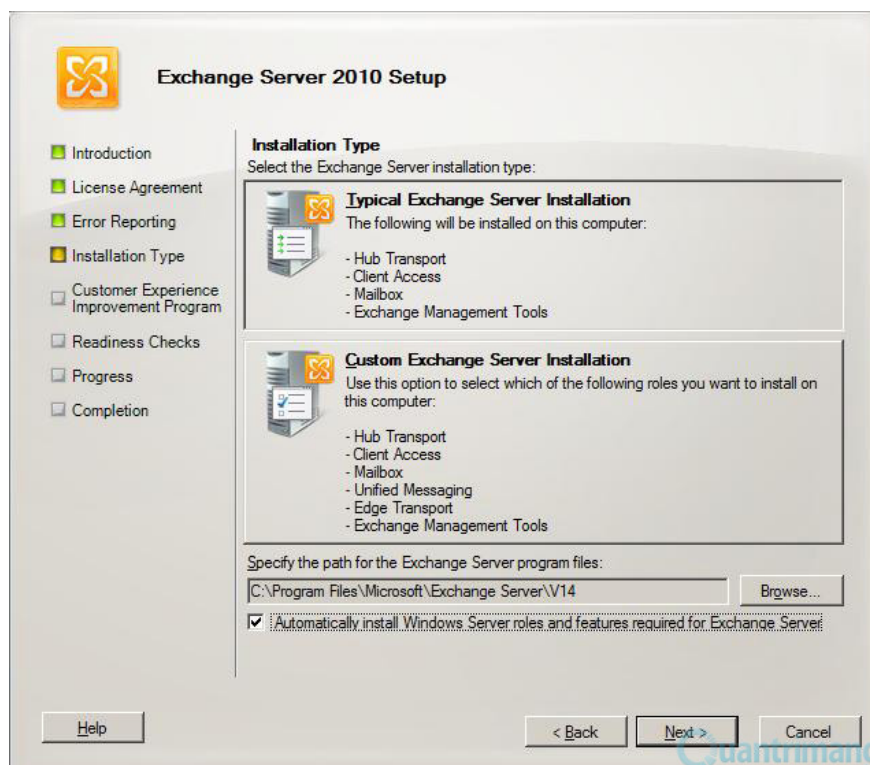
Agree to the license to use Exchange Server 2010

6. In the **Error Reporting** screen, select **Yes** so that the system automatically sends error messages to the manufacturer. Then, click the **Next** button.



Automatically send error messages to the manufacturer

7. On the **Installation Type** screen, select **Typical Exchange Server Installation** to install all Exchange Server roles on a server.



Select Typical installation type

Custom Exchange Server Installation option allows you to deploy roles on different servers. Details on how to implement this are detailed in **Chapter 2. Distributed deployment of Exchange Server 2010 roles** .

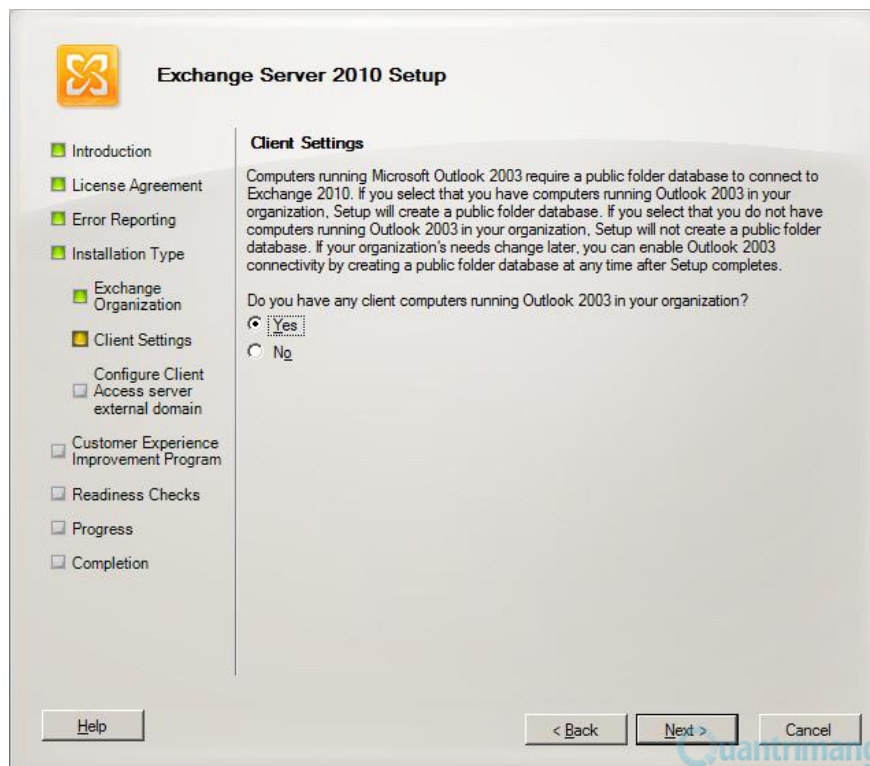
8. In the **Exchange Organization** screen, enter the name corresponding to the organization or business and click the **Next** button.



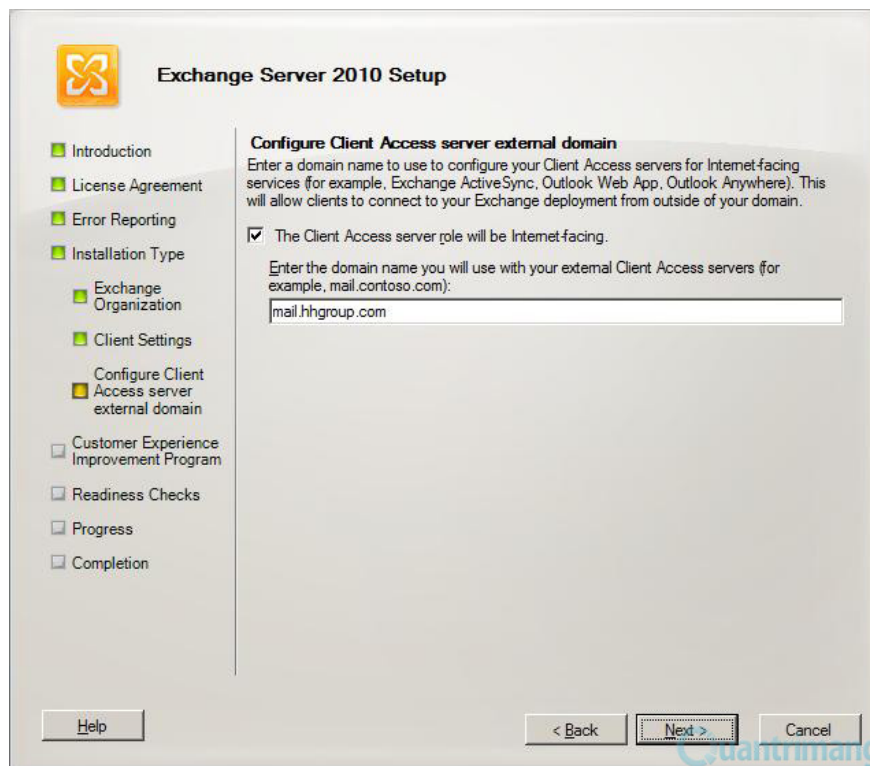
Enter the name of the organization or business

9. In the **Client Settings** screen, select **Yes** to allow network clients to use Outlook 2003 to communicate with Exchange Server 2010. After selecting, click the **Next** button.

10. In the **Configure Client Access server external domain screen** , you enter the name of the access to the Exchange server for workstations that do not belong to your domain, such as mail.hhgroup.com. Once completed, click the **Next** button.

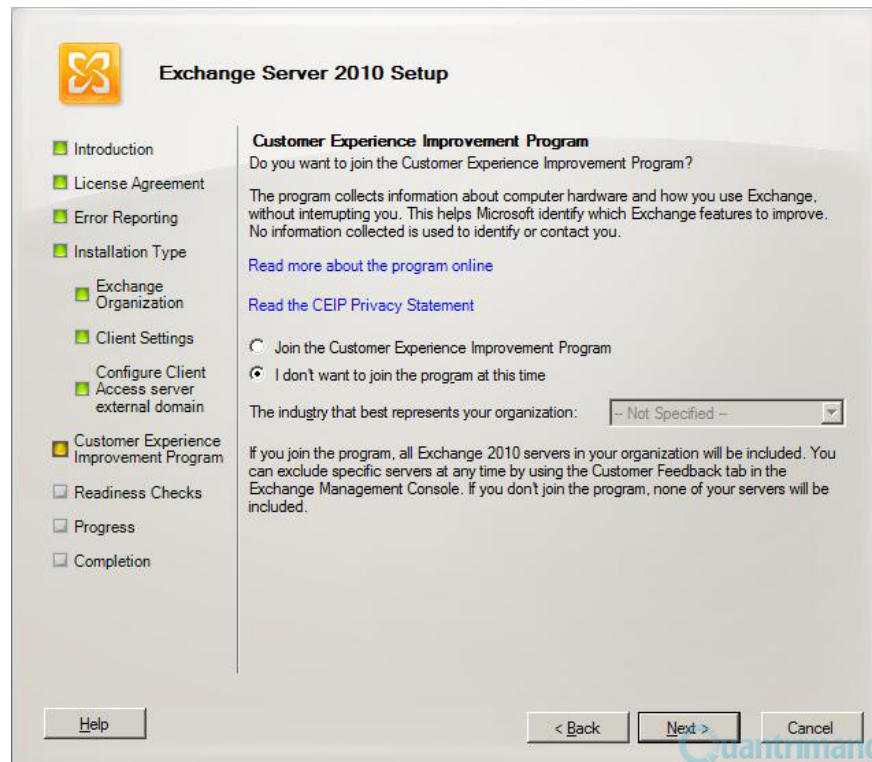


Allow network workstations to use Outlook 2003



Enter domain name so that external workstations access Exchange Server 2010

11. In the **Customer Experience Improvement Program** screen , you can join the Microsoft improvement program by selecting **Join the Exchange Customer Experience Improvement Program** . On the other hand, if you don't intend to join at this time, you choose **I don't wish to join the program at this time** . Once done, click the **Next** button.

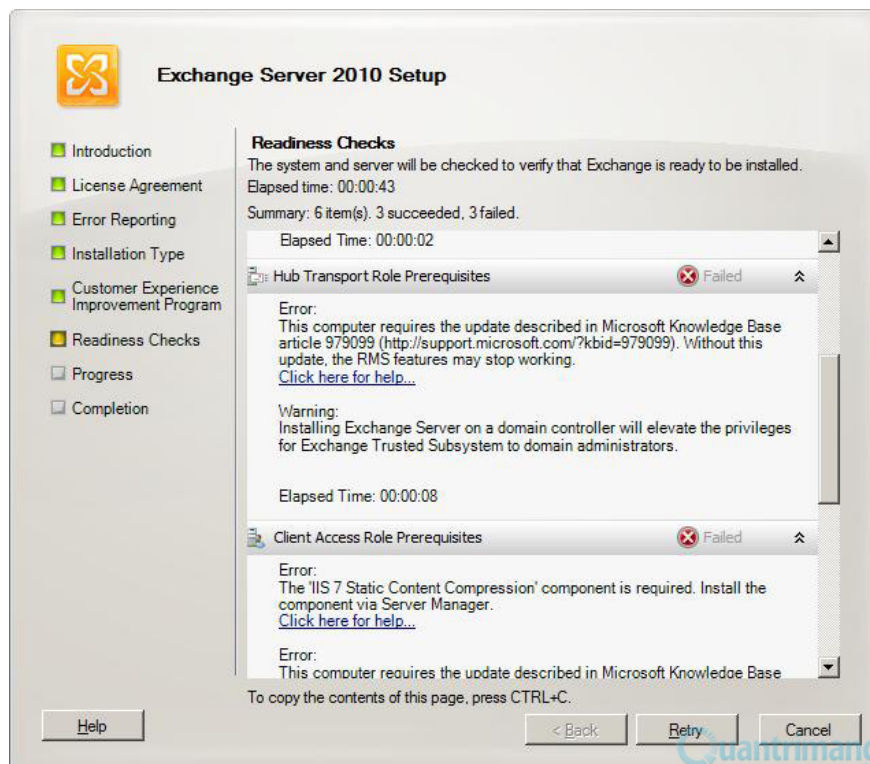


Join the Microsoft improvement program

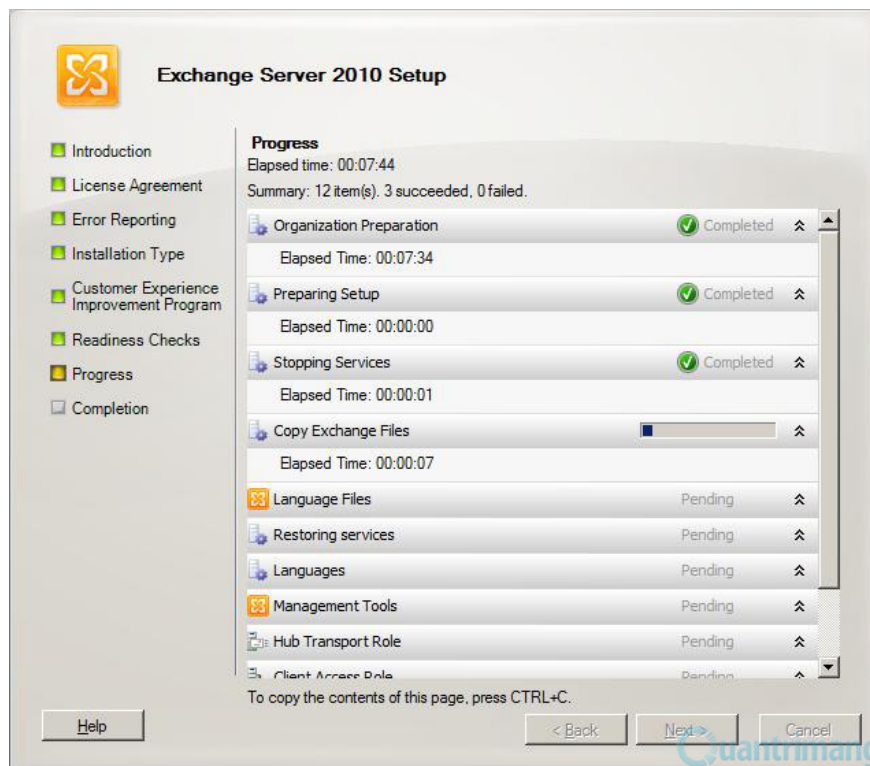
12. In the **Readiness Checks** screen, the installation program will perform the necessary test operations to ensure the components are fully installed and configured correctly.

If it detects that there are certain components that have not been properly installed or configured, the installation program will display an error message and provide suggestions for troubleshooting.

13. If the components are configured and installed correctly, you will get **Completed** status in all roles. At this point, click the **Install** button to install Exchange Server 2010 on the server. Soon, the installation process will take place.

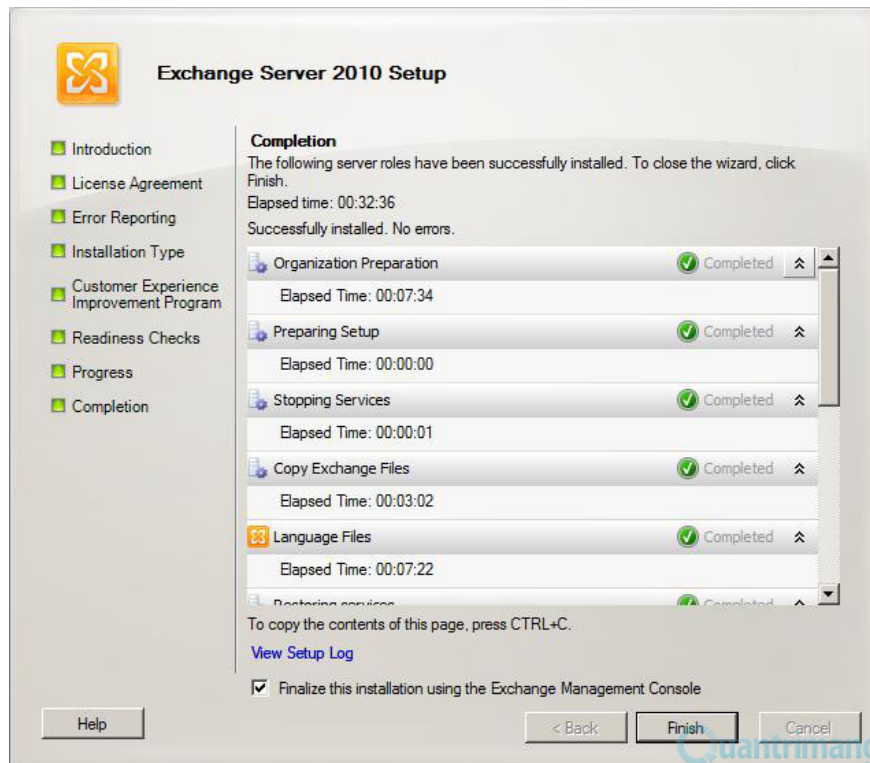


Some components have not been installed correctly



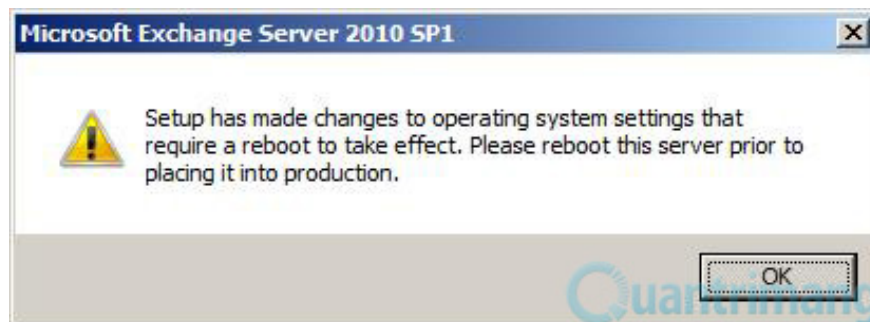
Install Exchange Server 2010 on the server

14. When the **Completion** screen appears, click the **Finish** button to complete the Exchange Server 2010 installation.



Complete the Exchange Server 2010 installation

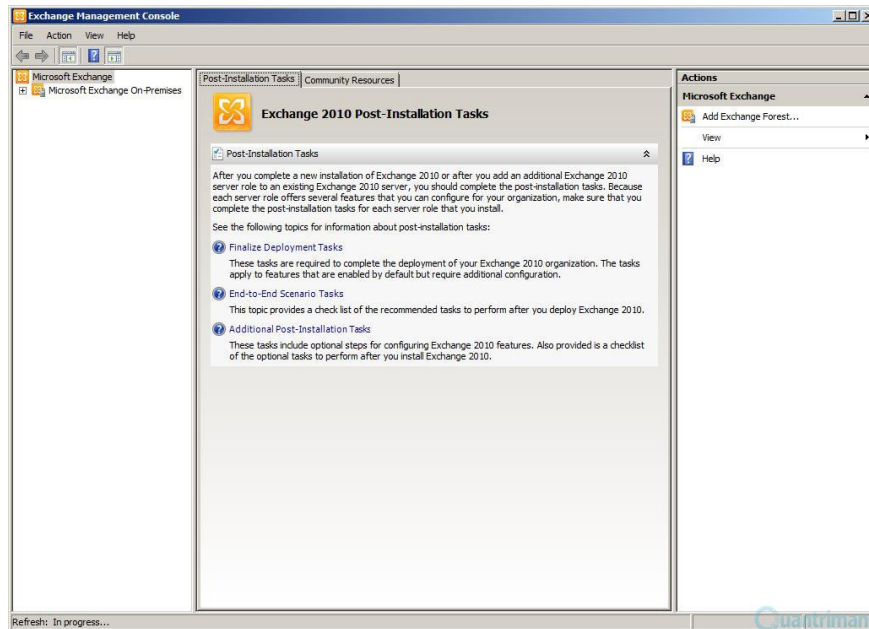
15. When the **Microsoft Exchange Server 2010 SP1** warning box appears, request to restart the server for changes to the system to take effect, click the **OK** button and restart the server.



Restart the server

5. Perform the operations after installing Exchange

After installing Exchange Server 2007 on the server, you need to do some operations to make sure the system works properly. These operations are suggested in the **Exchange Management Console** window, on the **Post-Installation Tasks** tab.

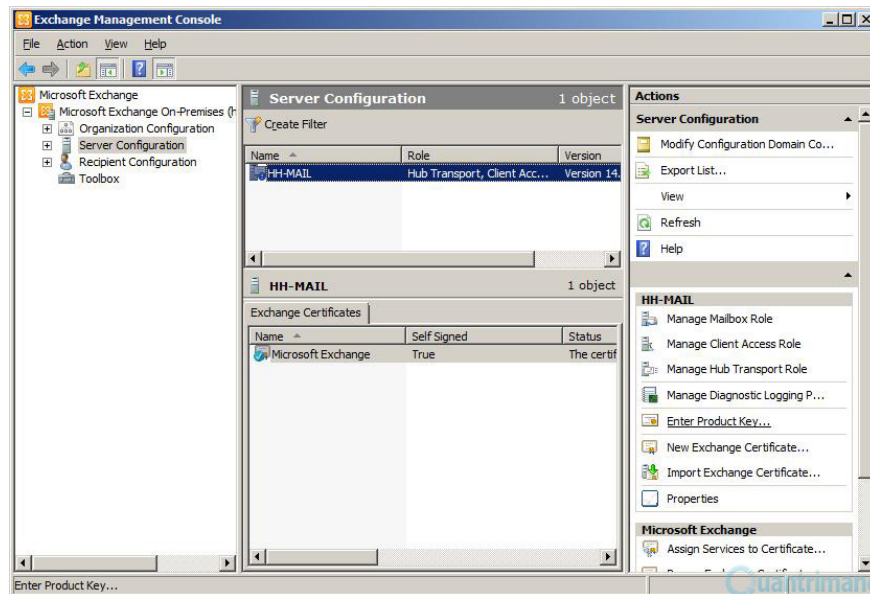


Actions to perform after installing Exchange 2010

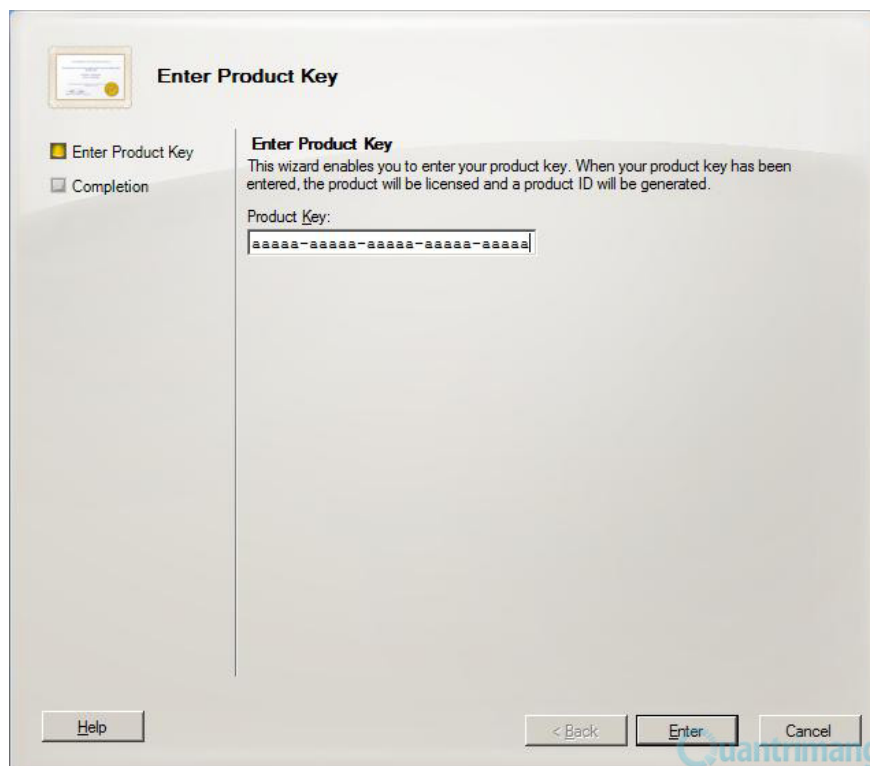
Enter the Product Key

The first operation to do after installing Exchange Server 2010 is to enter the corresponding product key. To do this, open the **Exchange Management Console** window from the **Start** menu. In the left pane of this window, select **Server Configuration** . In the middle pane, click on the server name. In the right pane, click the **Enter Product Key** link .

In the **Enter Product Key** window, enter the key sequence that you purchased the license to and press **Enter** .



Select the server to fill out the Product Key

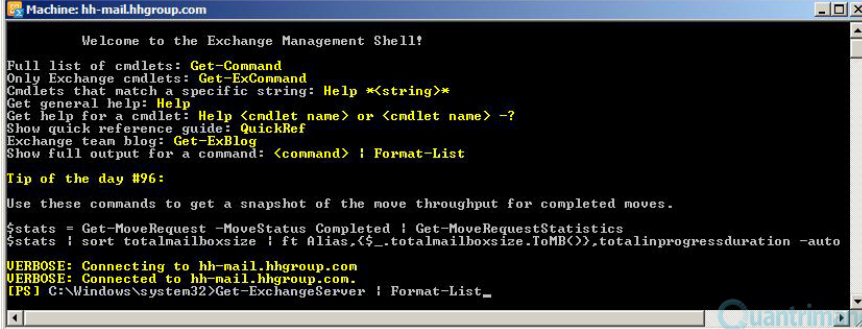


Enter the Product Key

Check the successful installation status of Exchange

To ensure that Exchange Server 2010 services and components are fully and correctly installed, open the **Exchange Management Shell** window from the **Start** menu. Next, you execute the command:

Get-ExchangeServer | Format-List



```
Machine: hh-mail.hhgroup.com

Welcome to the Exchange Management Shell?

Full list of cmdlets: Get-Command
Only Exchange cmdlets: Get-ExCommand
Cmdlets that match a specific string: Help *(<string>)*
Get general help: Help
Get help for a cmdlet: Help <cmdlet name> or <cmdlet name> -?
Show quick reference guide: QuickRef
Exchange team blog: Get-ExBlog
Show full output for a command: <command> | Format-List

Tip of the day #96:

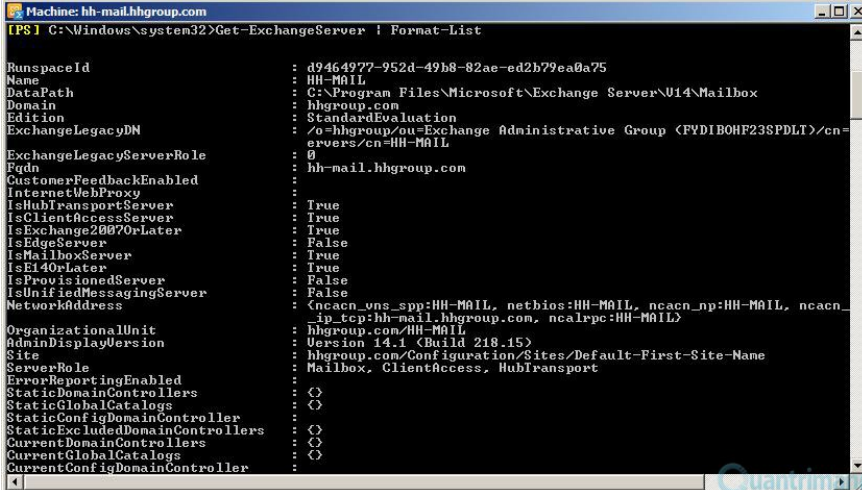
Use these commands to get a snapshot of the move throughput for completed moves.

$stats = Get-MoveRequest -MoveStatus Completed | Get-MoveRequestStatistics
$stats | sort totalmailboxsize | ft Alias,<$_totalmailboxsize.ToMB(>).totalinprogressduration -auto

VERBOSE: Connecting to hh-mail.hhgroup.com
VERBOSE: Connected to hh-mail.hhgroup.com.
[PS] C:\Windows\system32>Get-ExchangeServer | Format-List_
```

Execute the command to display Exchange status information

Soon, detailed information about the Exchange Server 2010 system will appear. At this screen, you will have all the information about the Exchange system installed.



```
Machine: hh-mail.hhgroup.com

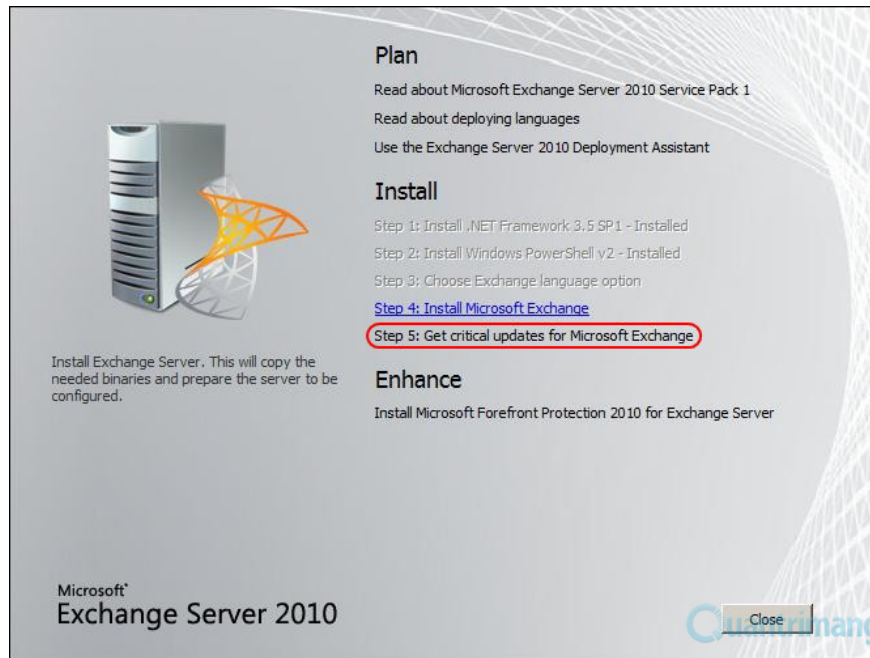
[PS] C:\Windows\system32>Get-ExchangeServer | Format-List

RunspaceId          : 49464977-952d-49b8-82ae-ed2b79ea8a75
Name                 : HH-MAIL
DataPath             : C:\Program Files\Microsoft\Exchange Server\U14\Mailbox
Domain               : hhgroup.com
Edition              : StandardEvaluation
ExchangeLegacyDN     : /o=hhgroup/ou=Exchange Administrative Group (FYDIBOHF23SPDLT)/cn=
                    : servers/cn=HH-MAIL
ExchangeLegacyServerRole : 0
Fqdn                 : hh-mail.hhgroup.com
CustomerFeedbackEnabled :
InternetWebProxy     :
IsHubTransportServer : True
IsClientAccessServer : True
IsExchange2007orLater : True
IsEdgeServer         : False
IsMailboxServer      : True
IsE140rLater         : True
IsProvisionedServer  : False
IsUnifiedMessagingServer : False
NetworkAddress       : <ncaecn_vns_spp:HH-MAIL, netbios:HH-MAIL, ncaecn_np:HH-MAIL, ncaecn_
                    : ip_tcp:hh-mail.hhgroup.com, ncalrpc:HH-MAIL>
OrganizationalUnit   : hhgroup.com/HH-MAIL
AdminDisplayVersion  : Version 14.1 (Build 248.15)
Site                 : hhgroup.com/Configuration/Sites/Default-First-Site-Name
ServerRole           : Mailbox, ClientAccess, HubTransport
ErrorReportingEnabled :
StaticDomainControllers : 0
StaticGlobalCatalogs : 0
StaticConfigDomainController :
StaticExcludedDomainControllers : 0
CurrentDomainControllers : 0
CurrentGlobalCatalogs : 0
CurrentConfigDomainController :
```

Exchange Server 2010 status information

Download and install the latest Exchange update packages

You should also update your Exchange 2010 system by clicking the **Step 5: Get critical updates link for Microsoft Exchange** in the Exchange Server 2010 installation screen.



Update Exchange Server 2010 system

Summary : In the three presentations, you learned an overview of Exchange Server 2010. Superior improvements make it simple, easy to use and especially reduce costs, making this new version a options are very interested in businesses. Also, with detailed step-by-step instructions, you can easily deploy Exchange Server 2010 systems in your unit.

You finished reading the article "**Step by step install Exchange Server 2010**" edited by the [TipsMake](#) team. We hope this article has provided you with many useful tech tips and tricks. You can search for similar articles on tips and guides. Thank you for reading and for following us regularly.