



Full HD standard screen test image

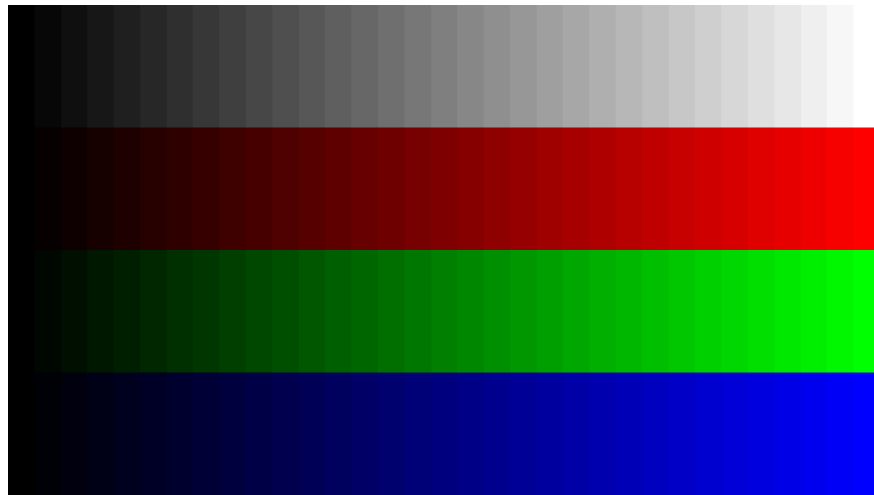
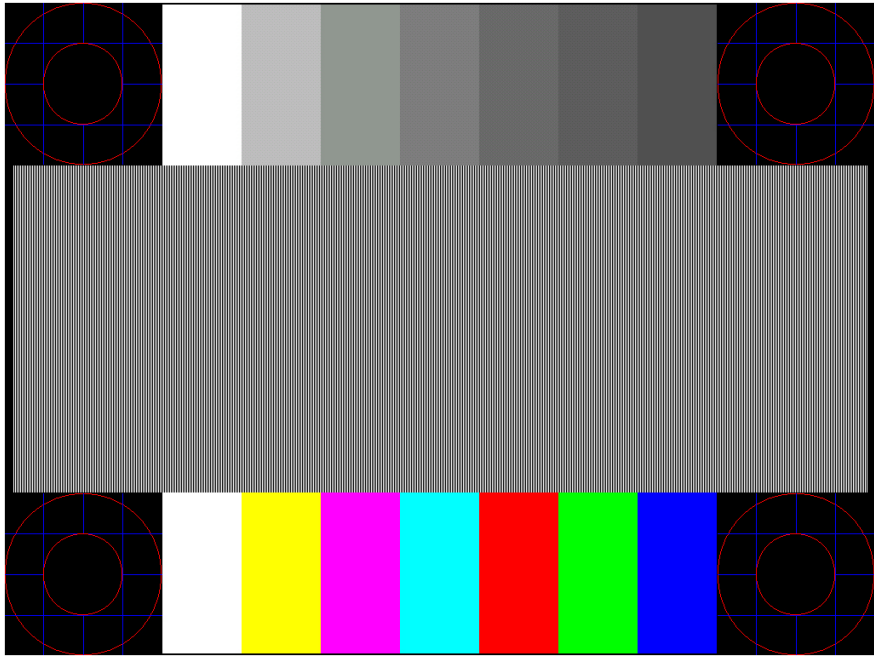
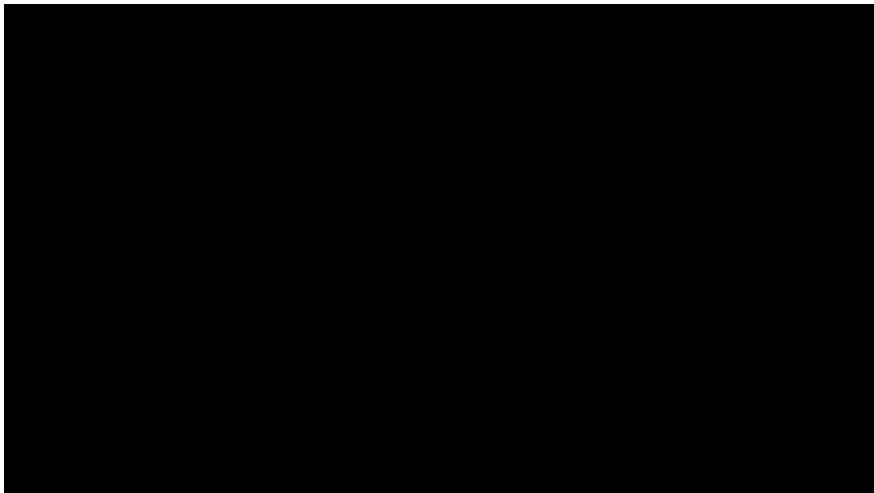


Image of test screen standard RGB



XGA standard screen test image



Black phone screen test image



Test image of red phone screen



Test image of pink phone screen



Test image of brown phone screen



Image of purple phone screen test

Test image of white phone screen



Test image of yellow phone screen



Test image of gray phone screen



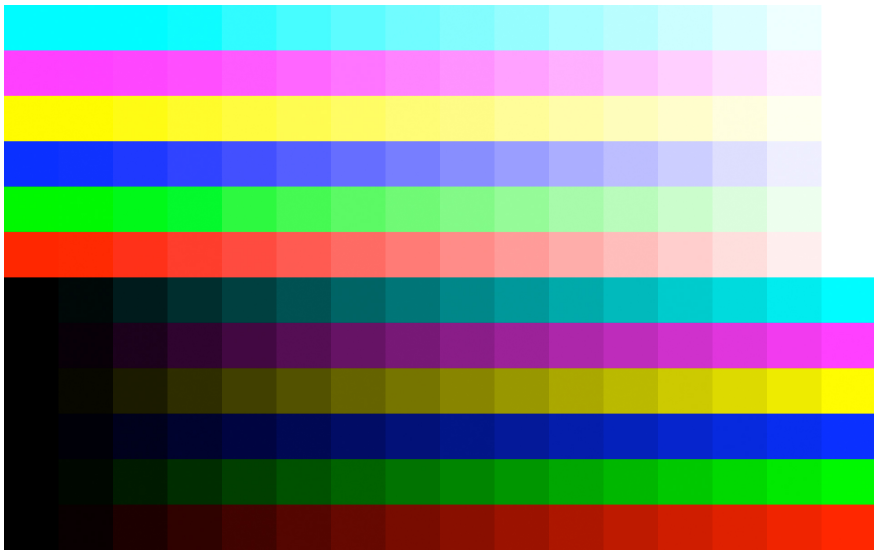
Test image of blue phone screen



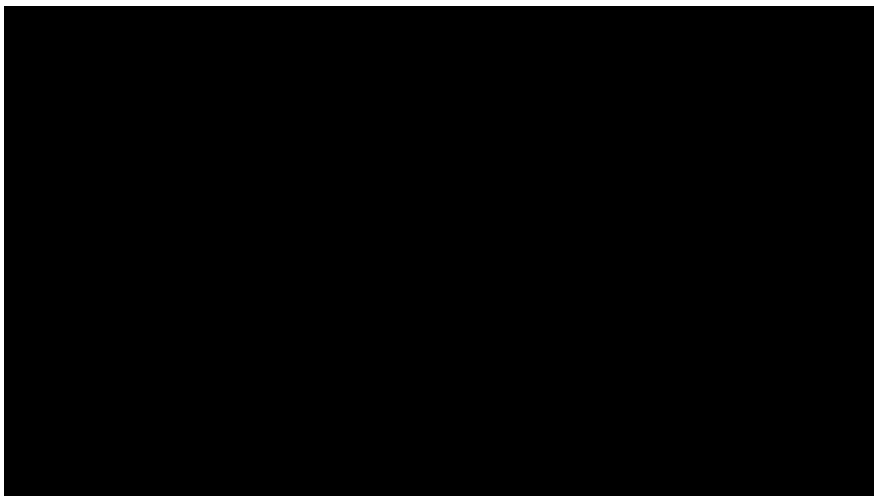
Test image of green phone screen



Test image of a turquoise phone screen



Standard color screen test image



Black computer screen test image



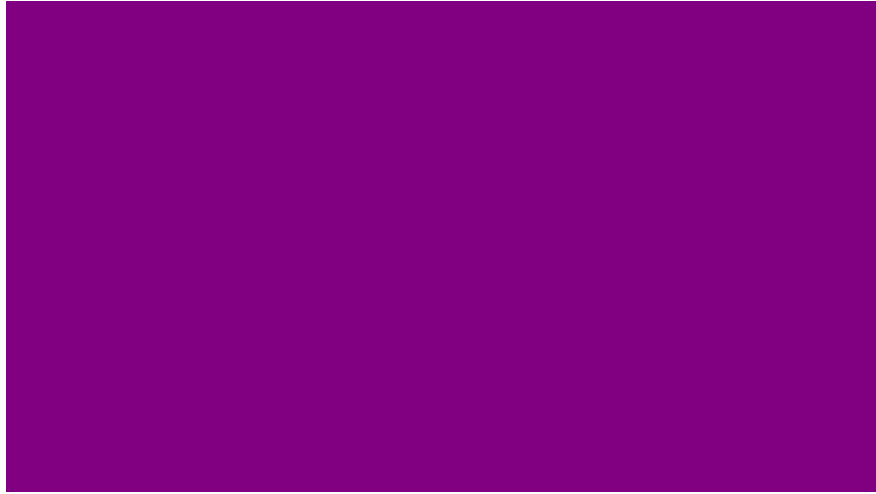
Test image of red computer screen



Test image of a pink computer screen



Test image of a brown computer screen



Test image of purple computer screen

Test image of a white computer screen



Test image of a yellow computer screen



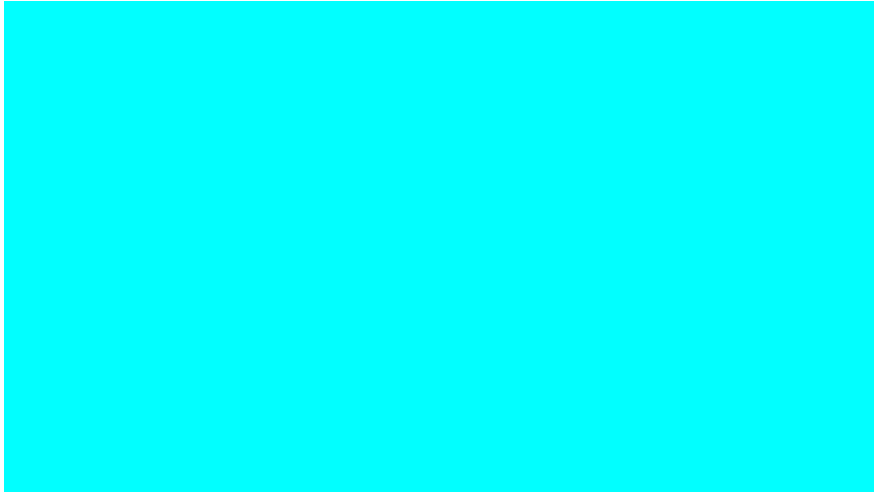
Gray computer screen test image



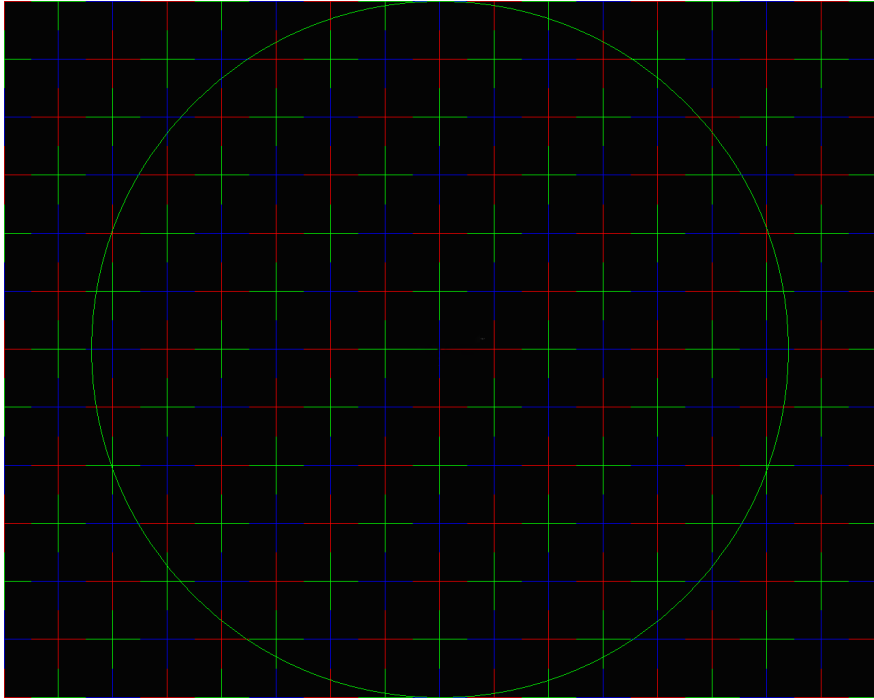
Test image of a blue computer screen



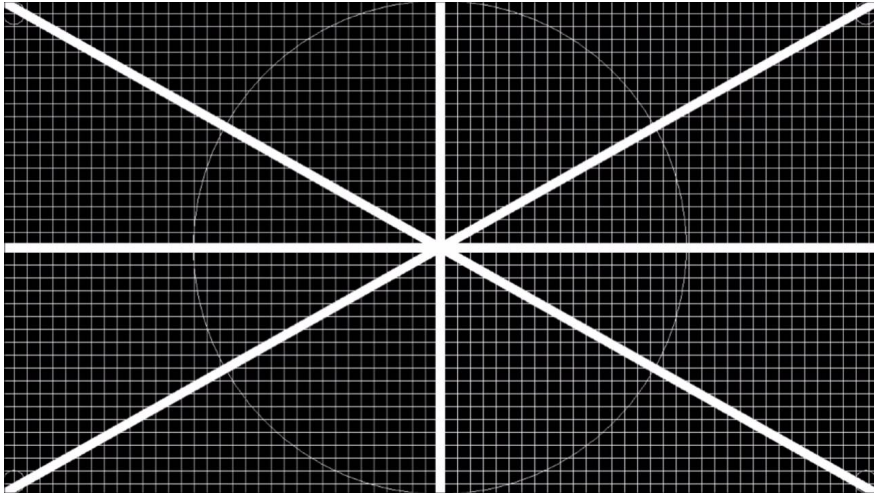
Test image of green computer screen



Test image of a turquoise computer screen



Standard Nokia screen test image



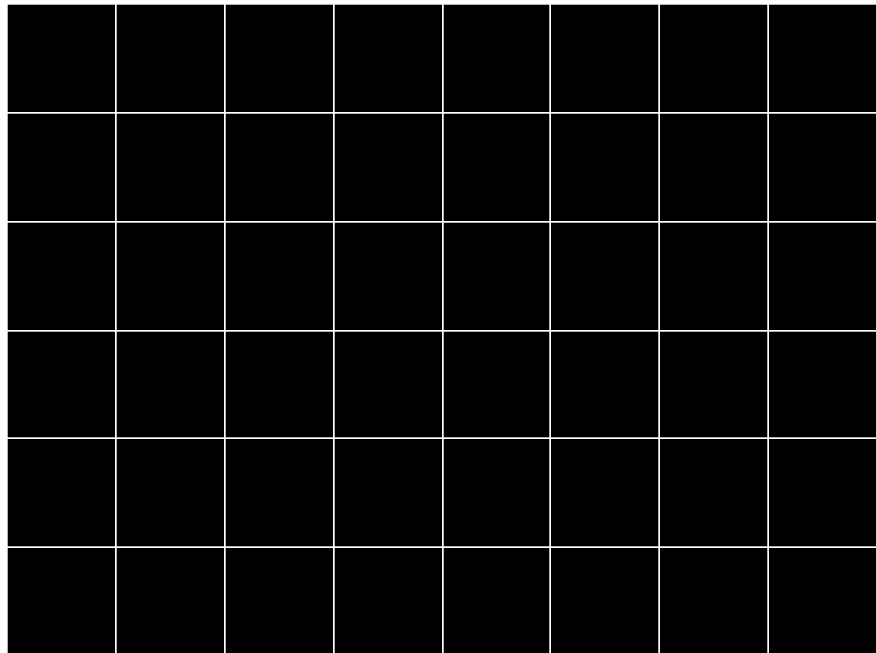
Test image of standard pixel position screen



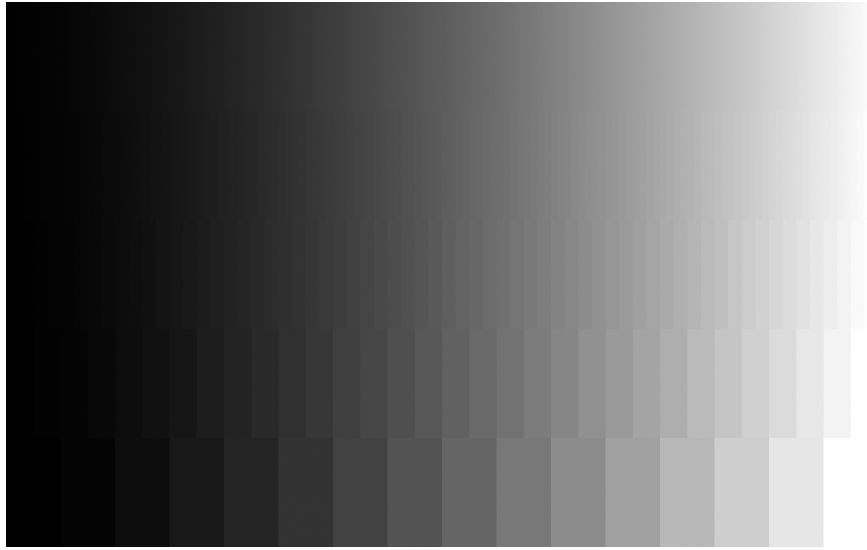
Standard screen test animation for phones



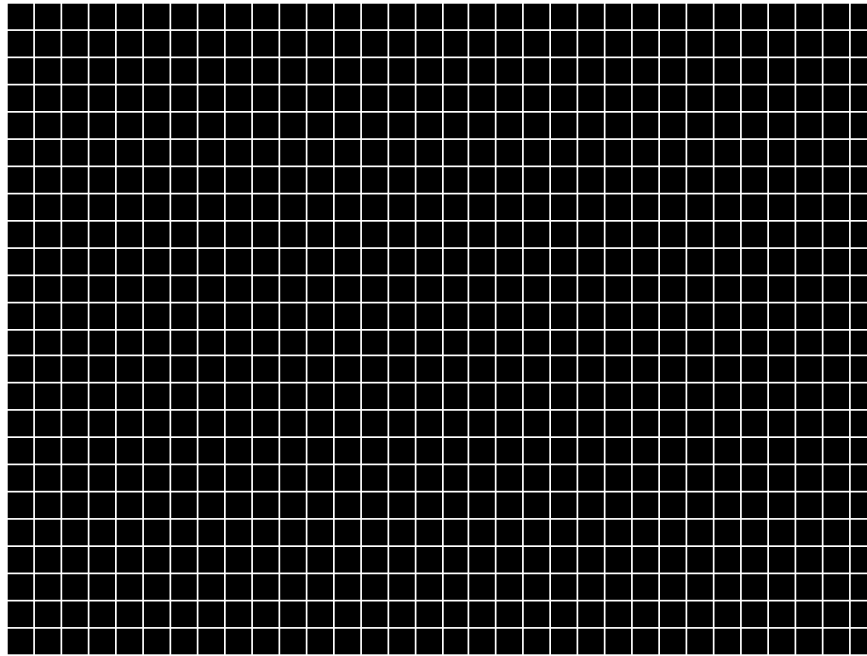
Standard screen test animation for computer



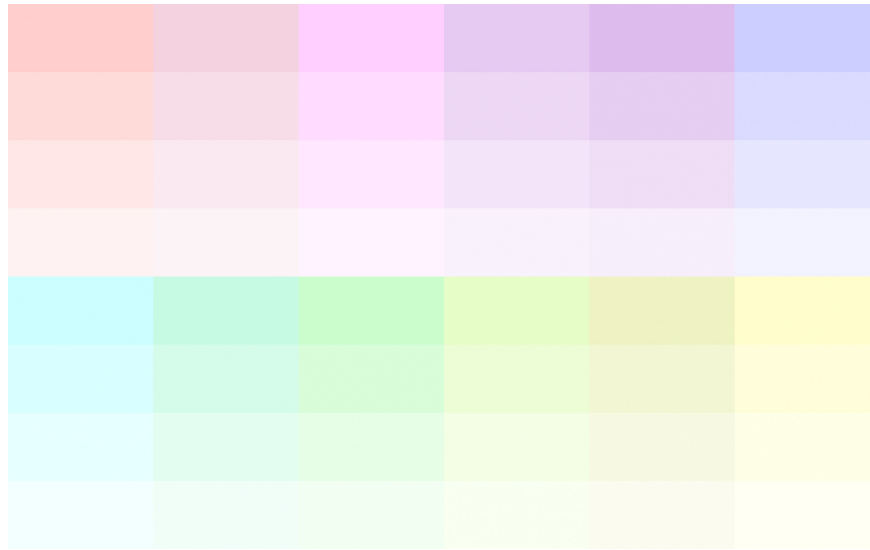
XGA standard screen dead point test image



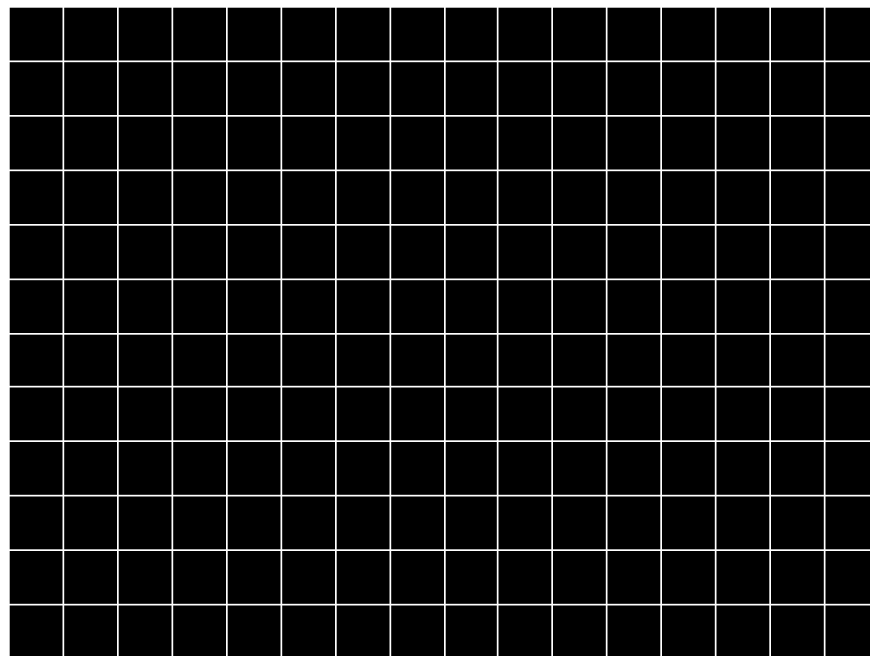
Nice standard black and white screen test image



Standard black and white screen test image



Standard color screen test picture



Test image of standard screen dead point position

With the standard screen test images in the article, it will help you save time compared to checking with software. Have a nice day!

You finished reading the article "**Standard screen test image**" edited by the [TipsMake](#) team. We hope this article has provided you with many useful tech tips and tricks. You can search for similar articles on tips and guides. Thank you for reading and for following us regularly.