

# SQL Server 2022 Installation Guide

Microsoft SQL Server 2022 is the latest version of SQL Server. A notable new feature is data virtualization, which allows users to query different data types across different data sources from SQL Server.

Microsoft SQL Server 2022 is the latest version of SQL Server. A notable new feature is data virtualization, which allows users to query different data types across different data sources from SQL Server.

Additionally, Microsoft has updated SQL Server Analysis Services in SQL Server 2022. SQL Server 2022 now also supports Power BI models with DirectQuery connections to those Analysis Services models.

Download Microsoft SQL Server 2022

## Note before installing Microsoft SQL 2022

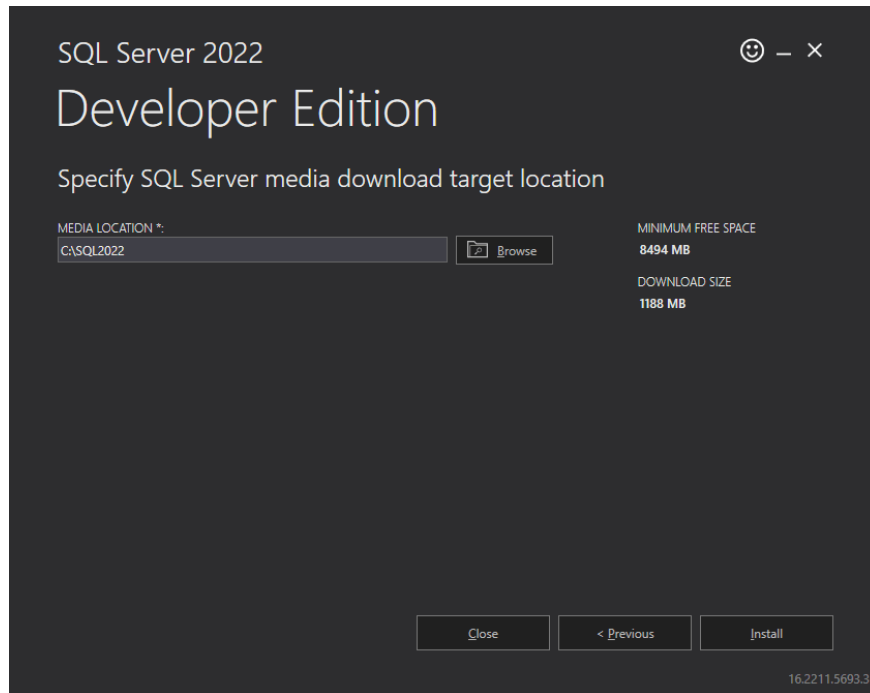
Before installing Microsoft SQL 2022, consider the following:

1. Ensure your server meets the minimum requirements of the Juris system and the requirements of Microsoft SQL Server.
2. You should not install SQL on a Domain Controller.
3. See *Step 17 - Configure the database drive location* before beginning the installation process.

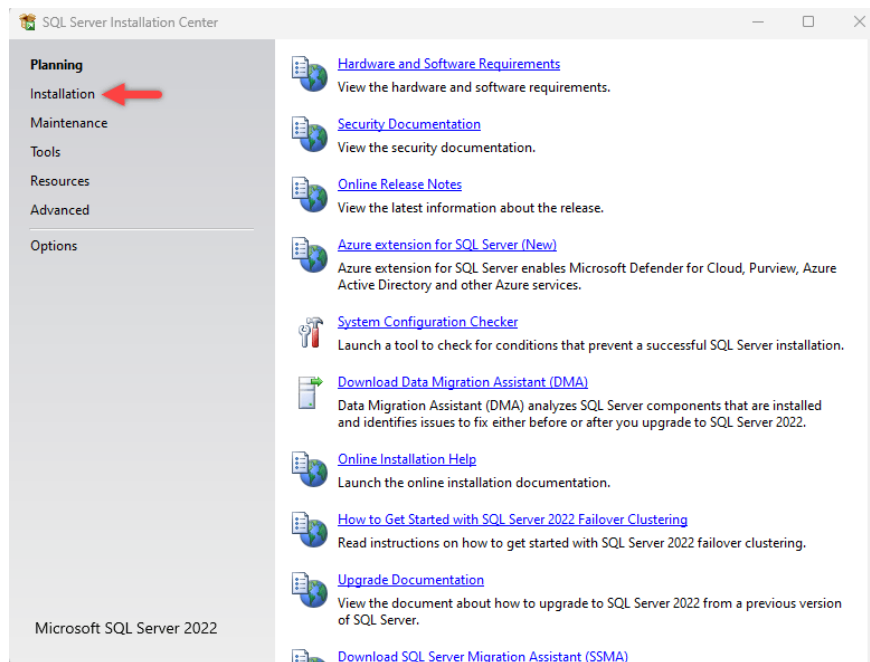
## SQL Server 2022 Installation Guide

Follow these steps to install Microsoft SQL Server 2022:

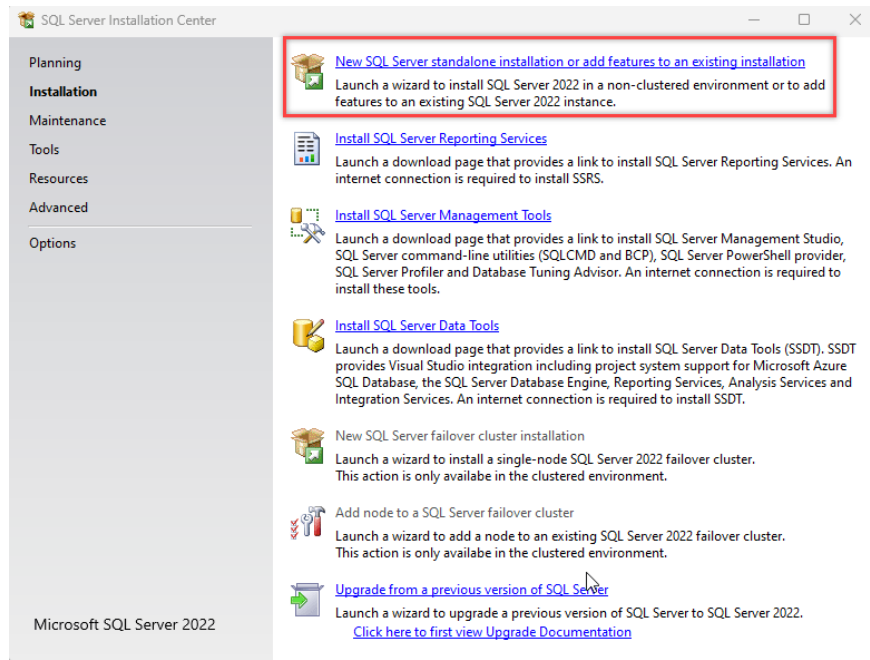
1. Log in to your server using the admin account.
2. Download the SQL 2022 installation media or insert the installation disc.
3. Locate the download location and double-click **Setup.exe** to begin the installation.
4. Select **Custom** for **Installation Type** .
5. Select **Media Location** and click **Install** to begin downloading the installation files.



6. Click on **Installation** located on the left side.

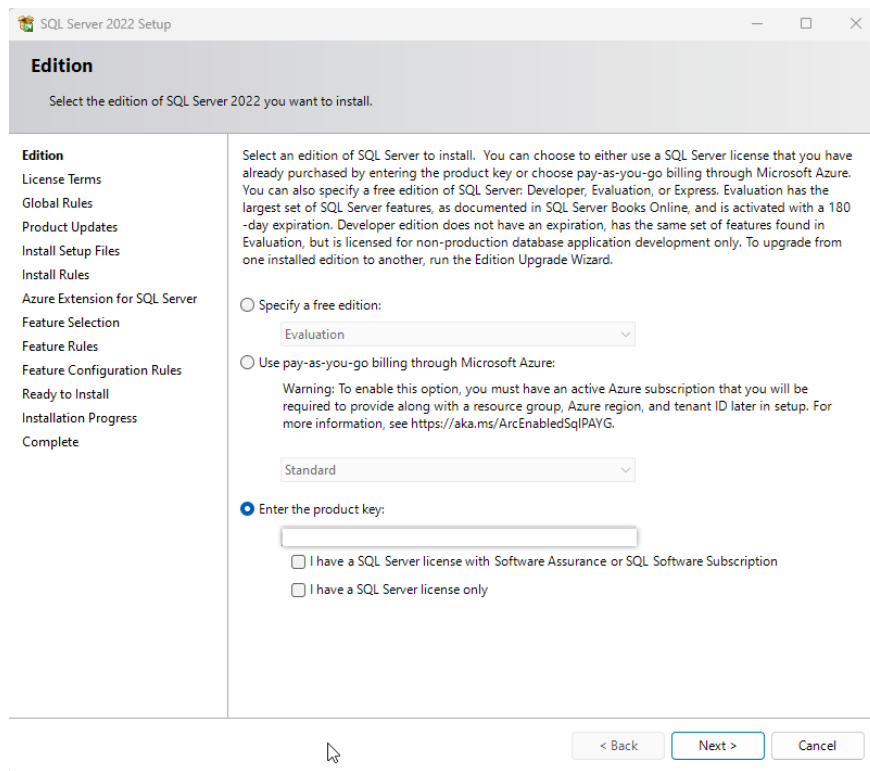


7. Click **New SQL Server stand-alone installation** or **add features to an existing installation** to open the **SQL Server 2022** window .



8. Click **Next** if prompted to download **Product Updates** .

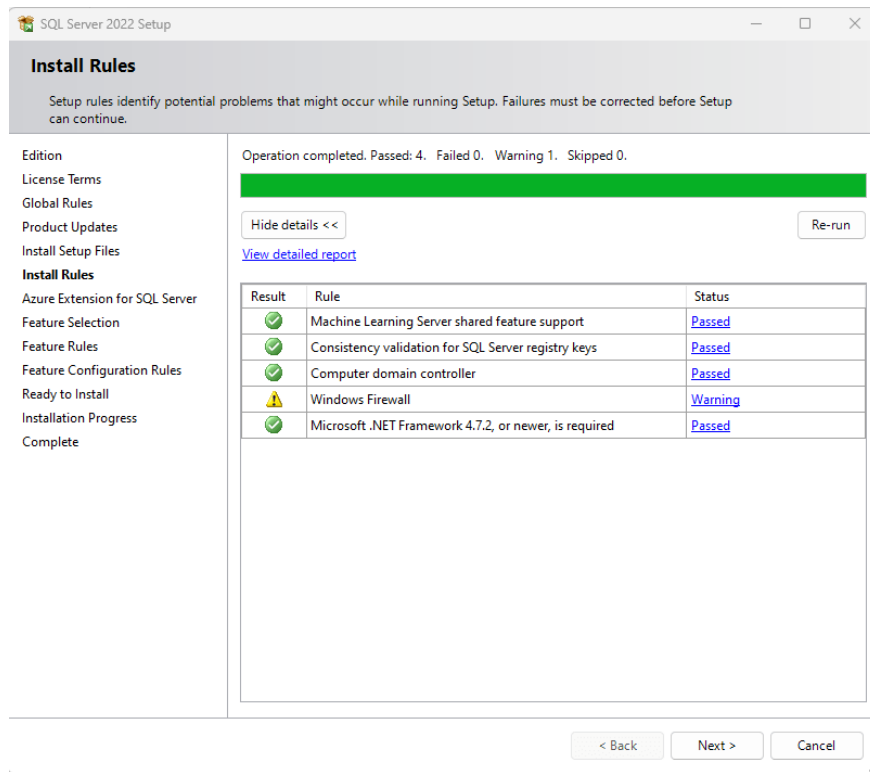
9. Enter **the Product Key** or select the free version, then click **Next** .



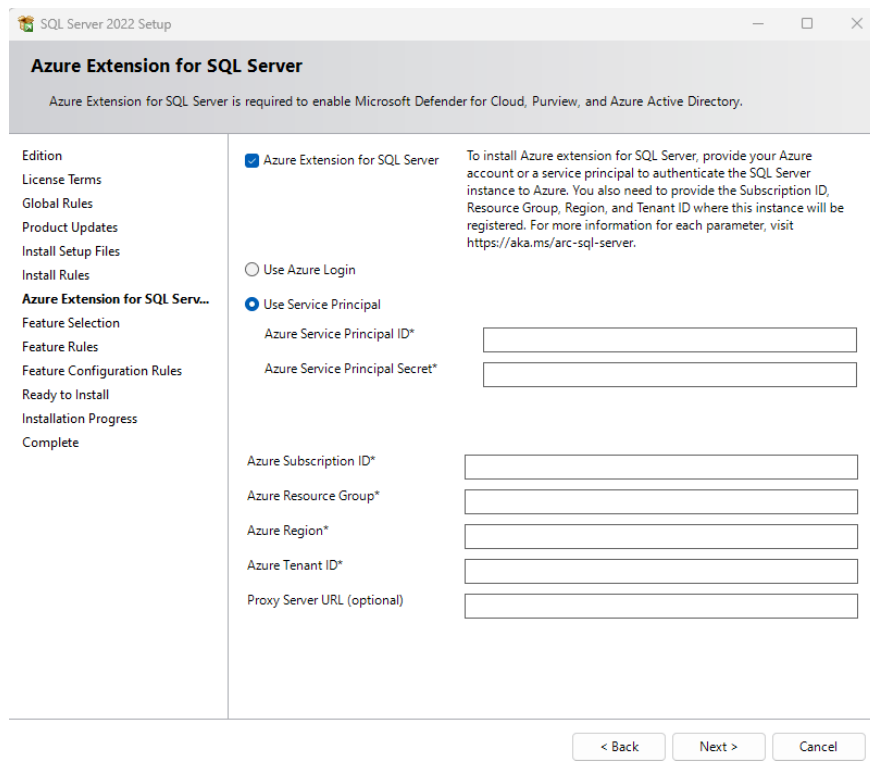
10. Click on **I accept the license terms** , then click **Next** .

11. Click **Next on the Install Rules** window .

**Note :** It is normal to see warnings for Windows Firewall. Firewall exceptions should be added after setting up SQL.

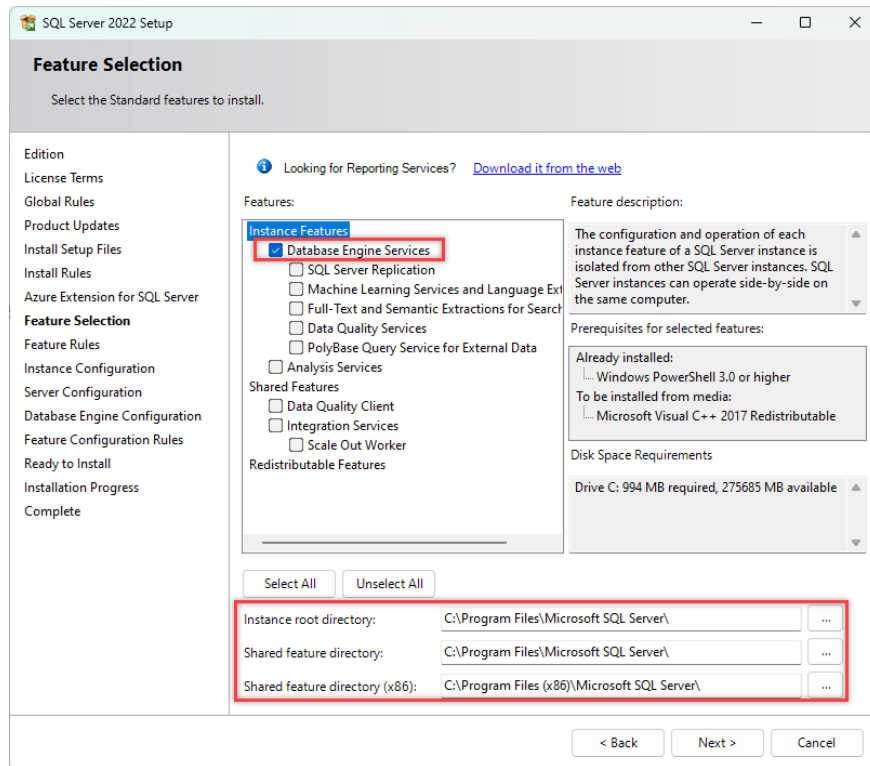


12. If you have purchased **Azure Extension for SQL** , enter your account information; otherwise, uncheck the box and click **Next** .

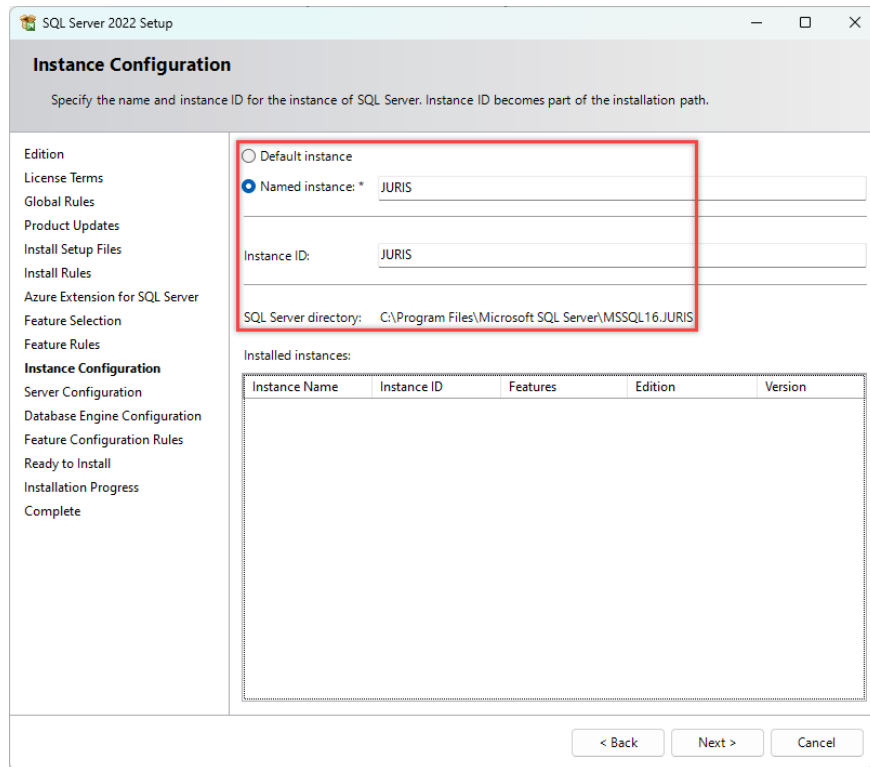


13. Select the **Database Engine Services** checkbox in the **Feature Selection** window , then click **Next** .

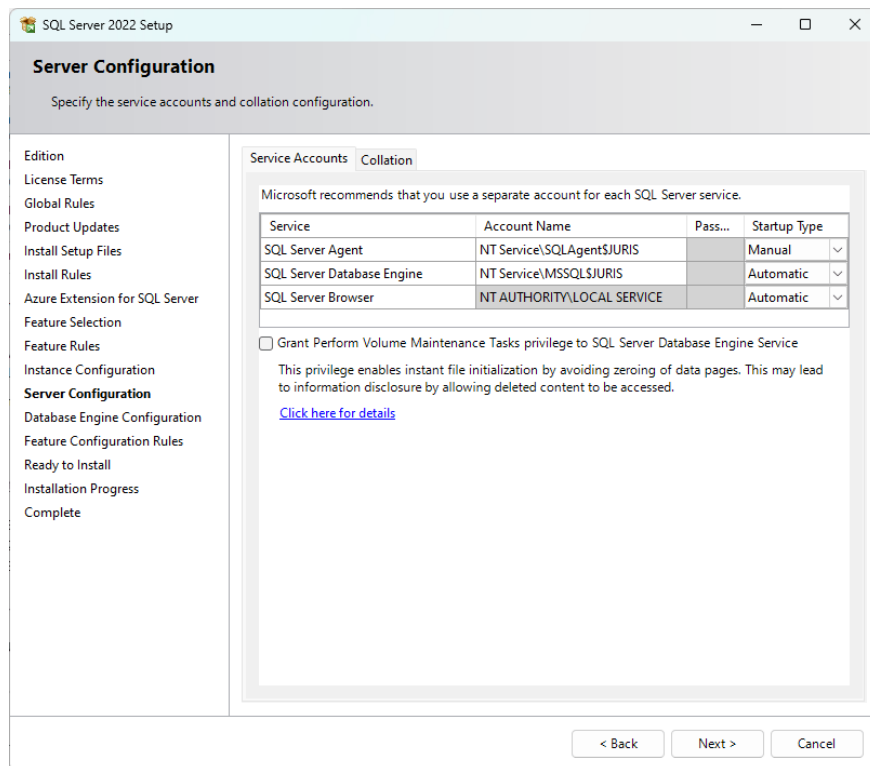
1. Juris only requires the installation of Database Engine Services. Client Connectivity is automatically installed on SQL 2022.
2. Copying SQL Server is not compatible with Juris. All other SQL features are optional based on company needs.
3. Specify the **Instance Root** and **Shared Feature** directories , or accept the default locations.



14. Enter your desired name (such as Juris) for the **Named Instance** and **Instance ID** , then click **Next** to open **Server Configuration** .

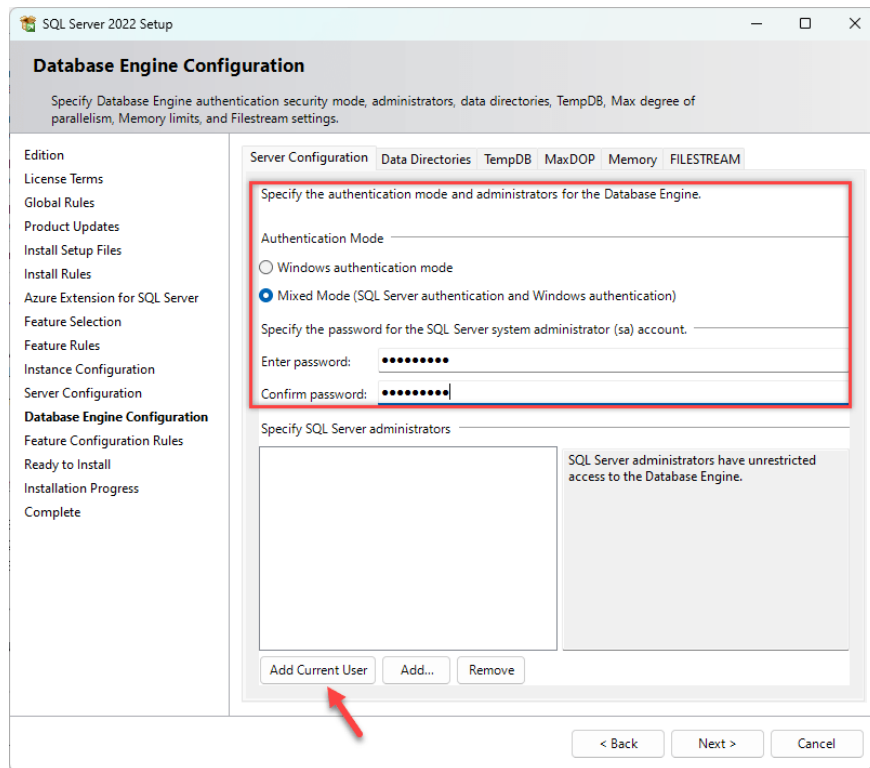


15. Ensure that Startup Types for **SQL Server Database Engine** and **SQL Server Browser** are set to **Automatic** , then click **Next** to open **Database Engine Configuration** .



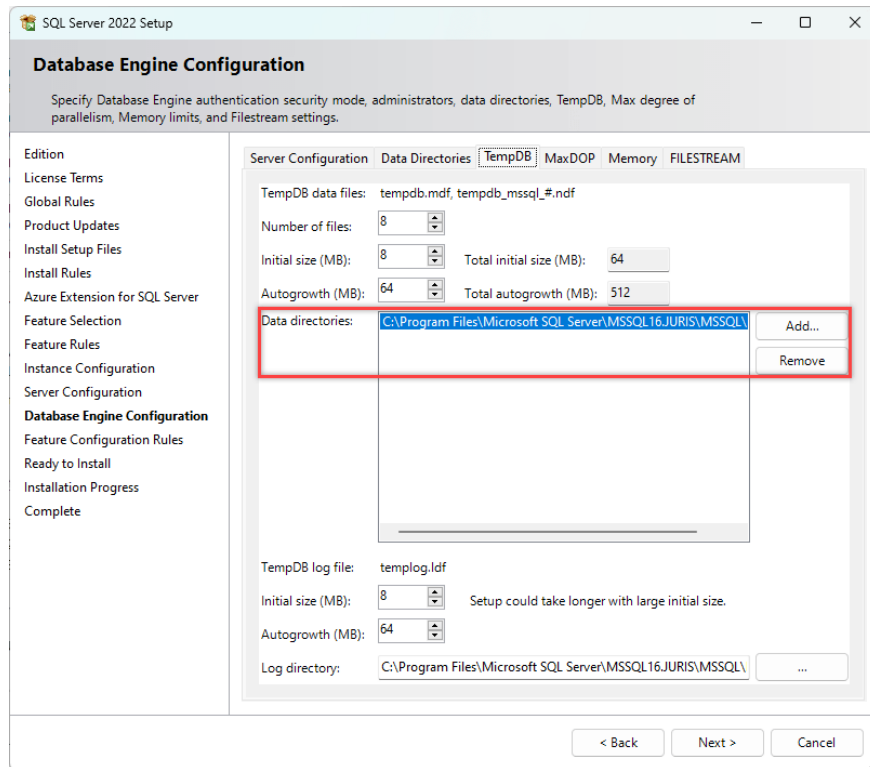
16. On **the Server Configuration** tab :

1. Select **Mixed Mode (SQL Server authentication and Windows Authentication)** for **Authentication Type** .
2. Enter and confirm your desired password for the built-in admin account.
3. Click **Add Current User** in the **Specify SQL Server Administrators** section . Click **Add** if you want to add another user.

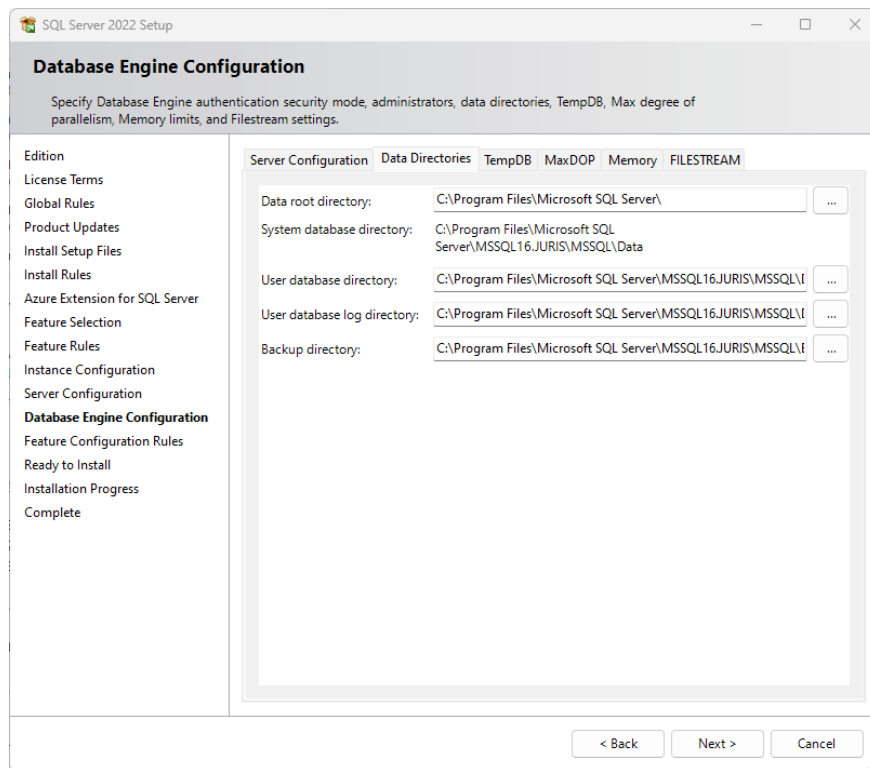


17. Placing **the TempDB , User Database , and User Database Log files** , each on a separate local hard drive, can significantly improve overall SQL performance. The steps below are optional and not required for hosting a Juris database on Microsoft SQL. Please consult your database administrator (DBA) if you are unsure or have any questions.

1. **TempDB tab** - Specify a separate local hard drive to store TempDB files. External and network hard drives should not be used. SSDs are ideal due to their faster transfer speeds.



1. **Data Directories tab** - Specify separate local hard drives to store User Database and User Database Log files. External and network hard drives are not supported.



1. **MaxDOP, Memory & FileStream tabs** - See SQL Server installation guide for optional settings.
18. Click **Next** when you have finished selecting **the Database Engine Configuration** .

19. Click **Next on the Ready to Install** window .

20. Click **Close on the Complete** window .

**Note** : Before installing Juris on your new SQL Server instance, you must install SQL Server Management Studio and configure SQL Server settings.

I wish you success!

See more:

1. Step-by-step guide to installing SQL Server 2017
2. How to completely uninstall SQL Server
3. Data types in SQL Server

You finished reading the article "**SQL Server 2022 Installation Guide**" edited by the [TipsMake](#) team. We hope this article has provided you with many useful tech tips and tricks. You can search for similar articles on tips and guides. Thank you for reading and for following us regularly.