

# Speed ??up SSD performance on Windows 11

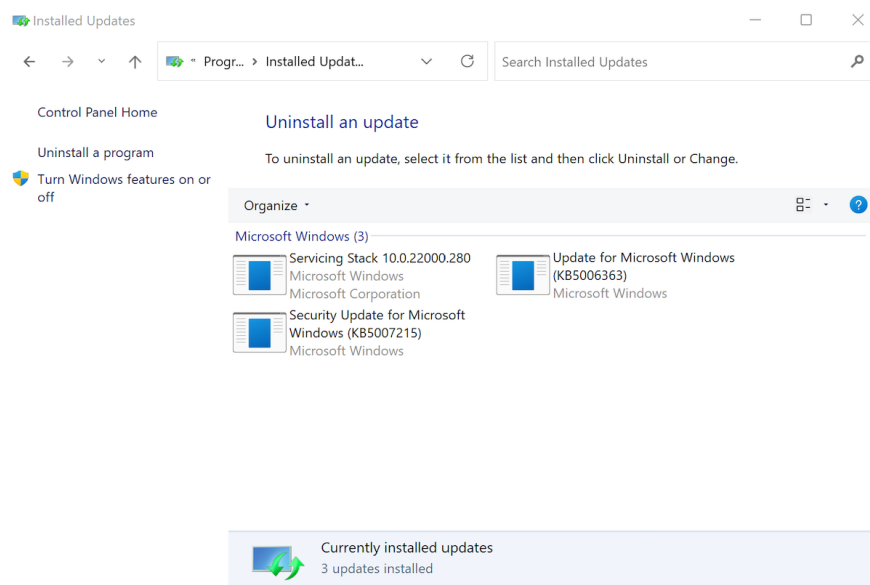
Even though you are using Windows 11 with SSD, your computer is still slow. This article will help you speed up performance on SSD.

If you are using a computer running Windows 11 with an SSD but still feel that the system is quite slow, you can try the methods in the article to improve performance. Normally, modern SSDs will have a very fast Windows boot time, as well as performing operations or launching software. And if you feel slow, sometimes it may be because you have not optimized some customizations, sometimes it is also because you have not updated Windows patches.

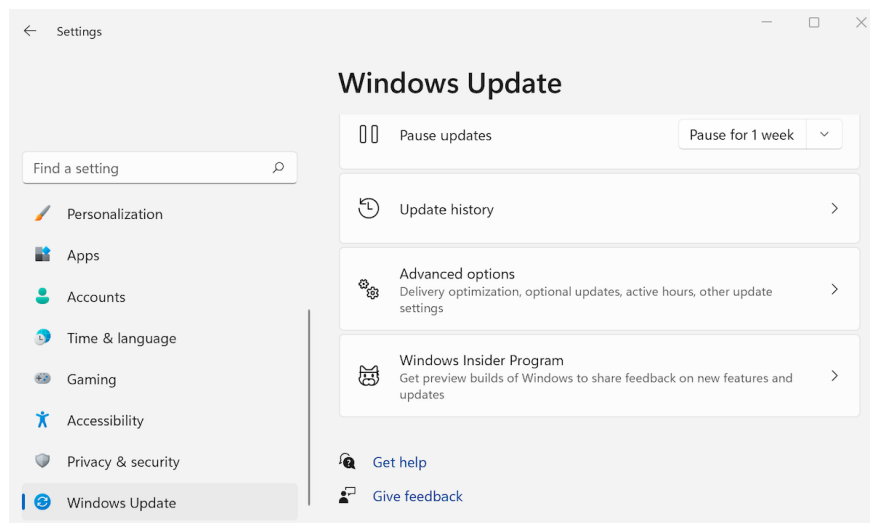
Those who have just switched to Windows 11 will probably find that SSDs seem to run slower than usual. Since this operating system is quite new, errors are inevitable, so Windows 11 users need to pay attention to updating new patches to improve.

## Using Windows Update

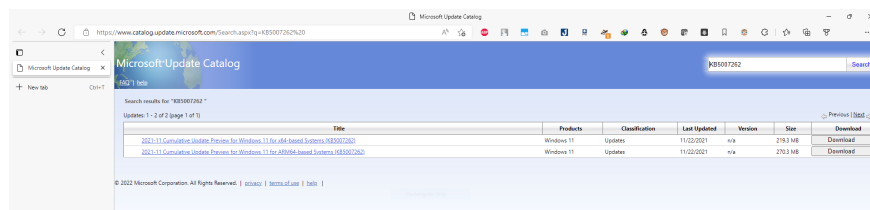
NVMe SSDs are known to have performance issues with the new Windows 11, so you can check to see if your Windows 11 version has the KB5007262 patch installed. To check the patch installation history, click the Start Menu, type 'Control Panel' to open the Control Panel window, click 'Programs' and select 'Programs and Features', and finally select 'View Installed Updates' to check.



You can also view the update history from Settings by typing 'Settings' in the Start Menu or using the shortcut 'Windows + i'. In the Settings window, select Windows Update - Update history.



The KB5007262 patch was released by Microsoft at the end of last year, so it is possible that you have not installed Windows 11 recently (due to using an old installation), or you have installed Windows 11 for a long time and have not updated because we (I guess) have a habit of not allowing Windows Update automatically. If this patch is not available, you can download and install it. Open Windows Settings, select Windows Update, click Check for Updates and wait for the system to list new patches, remember to check if KB5007262 is in the list, then click update and restart the computer.

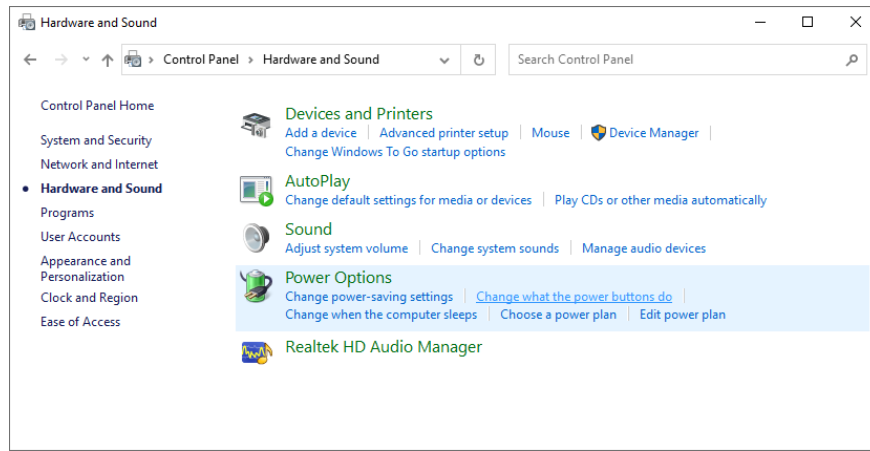


If you have checked for updates but still can't find any trace of KB5007262, you can update manually. Go to the Microsoft Update Catalog to download the x64 version of KB5007262 and install it, then reboot your computer. This patch will significantly improve the performance of NVMe SSDs.

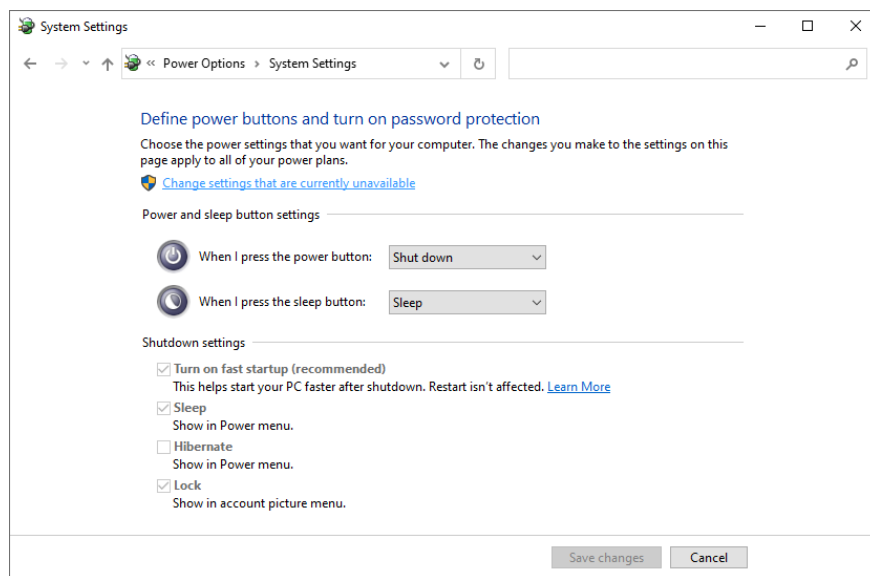
## Turn off Startup applications

After patch KB5007262, you should check the Startup section of Windows 11. Reducing the number of applications that automatically start with the operating system will also speed up the SSD, at least it helps us feel the computer starts up and is ready to use faster than before.





To enable Fast Startup, go to Control Panel, select Hardware and Sound, select Power Options, and click Choose what the power button does.



Clicking on Change settings that are currently unavailable will allow you to customize the previously dimmed options. Just check Turn on fast startup and Save changes.

You finished reading the article "**Speed ???up SSD performance on Windows 11**" edited by the [TipsMake](#) team. We hope this article has provided you with many useful tech tips and tricks. You can search for similar articles on tips and guides. Thank you for reading and for following us regularly.