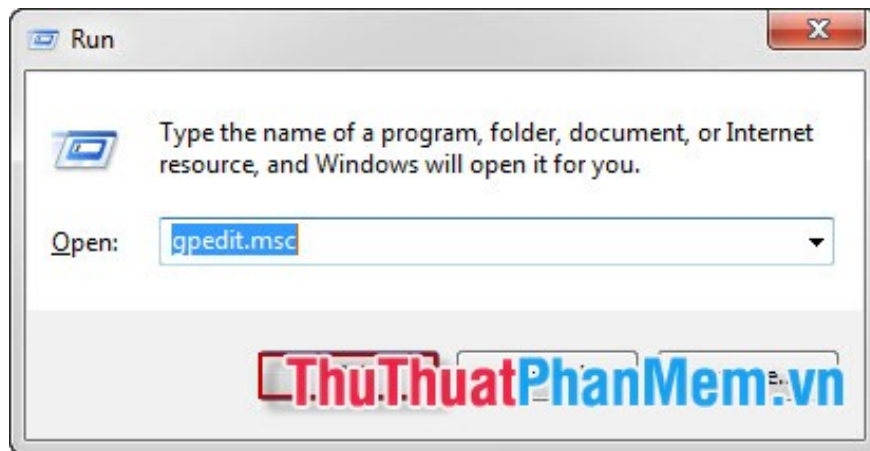


Speed ??up Internet access on Windows

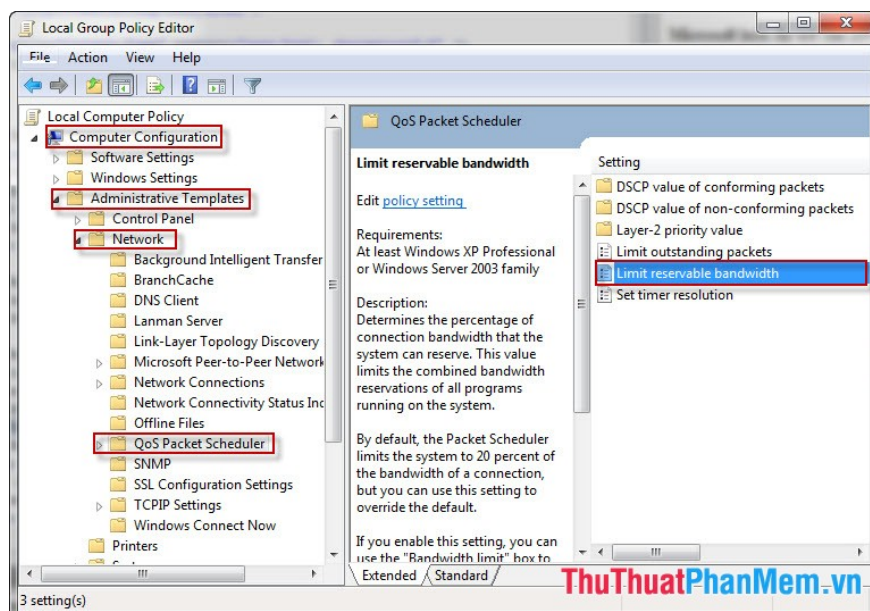
How to adjust and improve the speed of Internet access based on that? You can follow the main steps below.

Microsoft always reserves 20% of the total bandwidth for purposes such as updating or controlling the use of computers. Therefore, this is considered a mode that you may not need to use for the purpose of speeding up Internet connection. How to adjust and improve the speed of Internet access based on that? You can follow the main steps below:

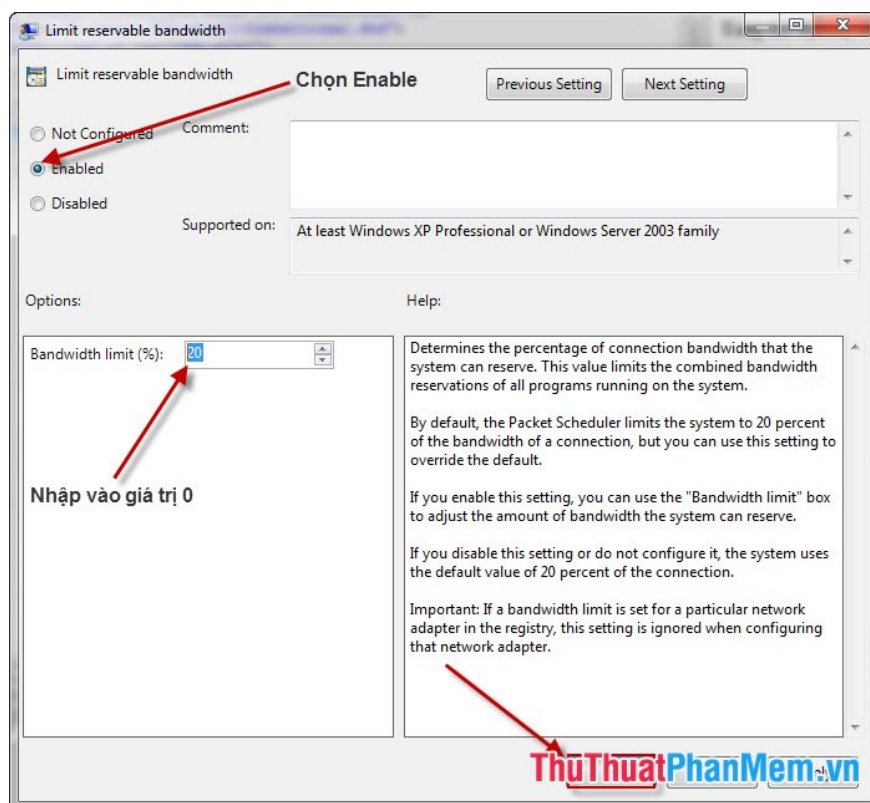
Step 1 : Open the **Run** dialog box by pressing **Windows + R** key combination or click **Start -> Run** (in Windows XP), **Start -> type Run** in the **Search Programs and Files box** (in Windows 7) and press Enter. Then enter the **gpedit.msc** command in the **Open** section of **Run** and click **OK** .



Step 2 : **Local Group Policy Editor** window appears, go to the **Administrative Templates** folder in the **Computer Configuration** section to find the **Network** section, and then click **QoS Packet Scheduler** . At the **QoS Packet Scheduler** window on the right side of the screen double click on the **Limit Reservable Bandwidth** line .



Step 3 : In the **Limit Reservable Bandwidth** window you may notice that this mode is set to **Not Configured** but you can still set the parameters by selecting **Enable** . Next in the **Options** section, select **Bandwidth limit (%)** and enter the value 0. Click **OK** to save the setting.



Step 4 : Restart the computer so that the changed values are set. Now your computer is considered to have completely booted 100% of its inherent bandwidth already.

You finished reading the article "**Speed up Internet access on Windows**" edited by the [TipsMake](#) team. We hope this article has provided you with many useful tech tips and tricks. You can search for similar articles on tips and guides. Thank you for reading and for following us regularly.

