

Some tips to speed up Windows 8 boot process

I can't help but admit that Windows 8 has an impressive boot time! However, over time, software applications and a number of system customizations will make the boot time greatly affected, namely Windows 8 will take longer to boot.

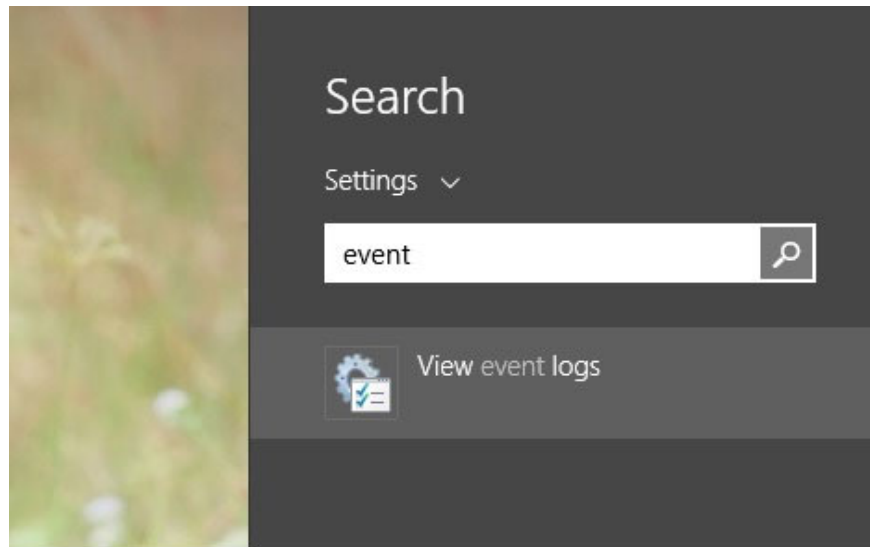
It is impossible not to admit that Windows 8 has an impressive startup time, which helps users save a lot of boot time. However, over time, applications, software that you download, install, and a number of system customizations will make the boot time greatly affected, namely Windows 8 will take a long time. more time when starting.



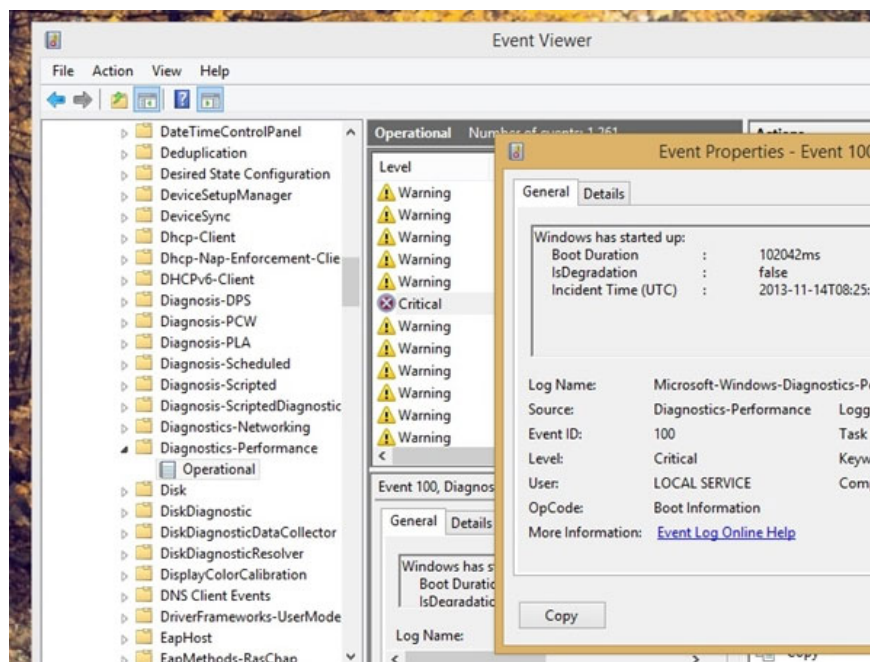
In addition to performing regular system cleanup to improve boot time, you can apply some of the tips below:

1. Determine the current boot time of Windows 8 computer

First, you need to determine the current boot time of your **Windows 8** by pressing the **Win + W** shortcut combination to activate **Search** , then type in the ' **event** ' keyword and select the **View** result . **event logs**.



The **Event Viewer** dialog box appears, access **Applications and Services Logs > Microsoft > Windows > Diagnostics Performance** and check the **Log** list to select the **Critical** key in turn and see the **Event ID** parameter of the key.

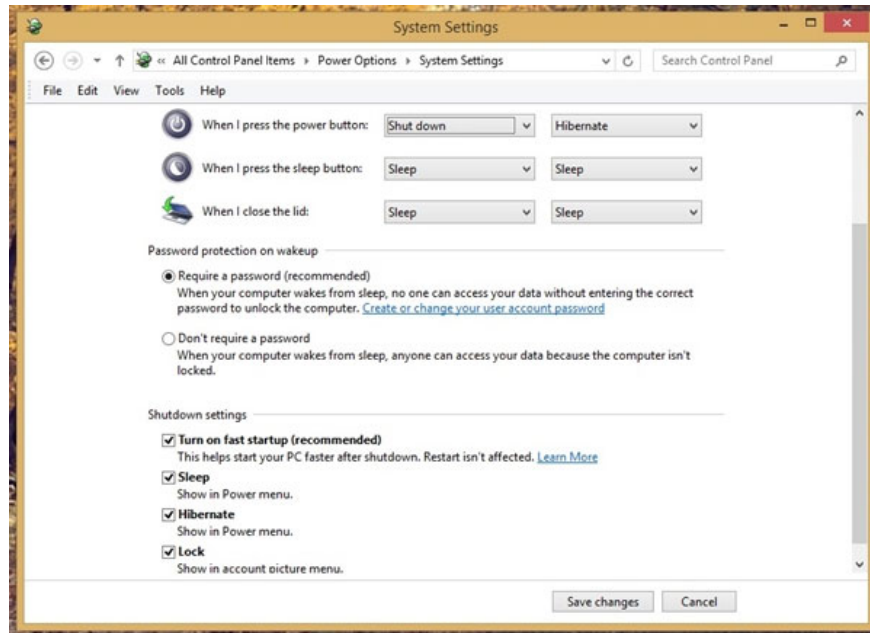


Here the **Event ID** parameter is 100, which means that my Windows 8 takes nearly 3 minutes to complete the boot.

2. Ensure the Fast Startup feature has been activated

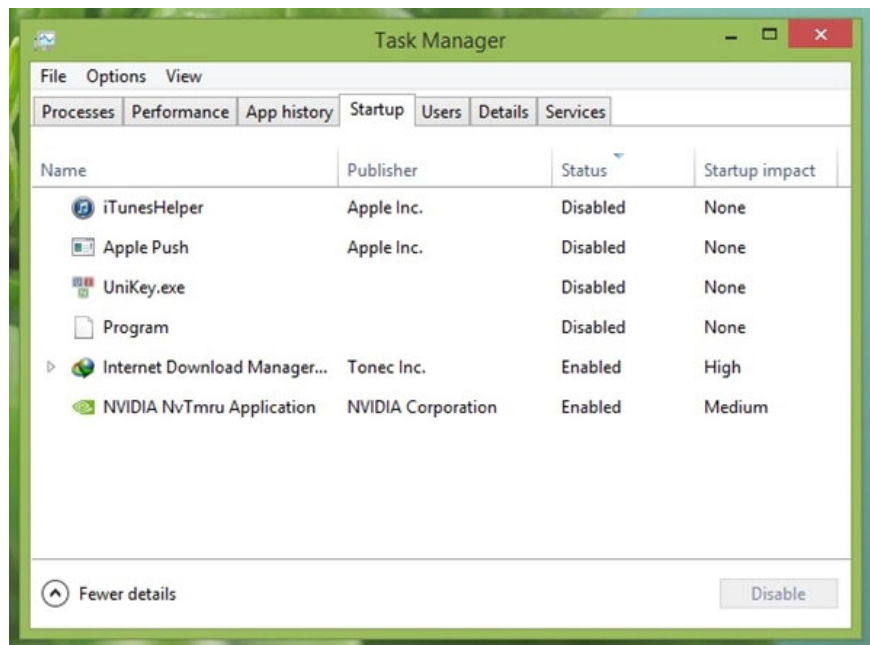
Windows 8 added a small feature to speed up the boot process after each shutdown, which is **Fast Startup**. When we turn off the computer, Windows 8 will switch to *hibernates* (*hibernates*) and save the temporary data to the **hiberfil.sys** file in the system drive. This will help Windows 8 always have the fastest boot time and the system data will continue to load.

You can start the **Fast Startup** feature by going to **Control Panel > Power Options > Choose what the power buttons** and clicking on **Turn on fast start-up (recommended)** in **Shutdown settings** . Click Next **Save changes** and restart the computer to choose which option to execute,



When **Fast Startup** is activated, you will see that the boot time of Windows 8 will be shortened by half. And if the computer uses UEFI technology, the boot time is even more impressive!

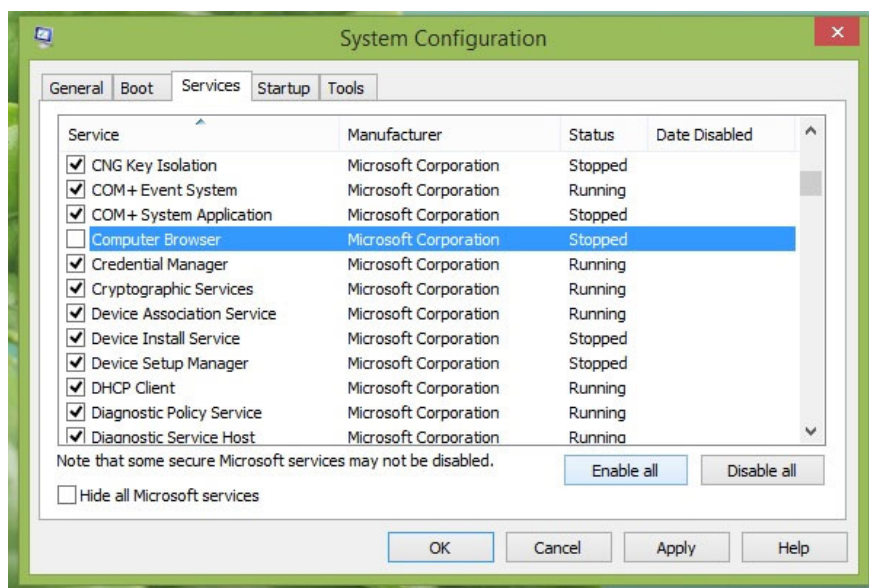
3. Turn off applications that start with Windows



This method is certainly not new to Windows users, in order to improve the boot time for Windows 8, it is very important to disable unnecessary Windows startup processes. And you can do this easily in the **Task Manager** dialog box on **Windows 8**.

4. Turn off services that start with Windows

On Windows 8, there are two services that are unnecessary and rarely used but take up a lot of boot time, including **Computer Browser** and **Windows Media Player Network Sharing** . So you can turn them off by calling the **Run** dialog and entering the command line ' *msconfig* ' to open the **System Configuration** feature. Then select the **Services** tab and then turn off (*uncheck*) 2 services, **Computer Browser** and **Windows Media Player Network Sharing** in the list, then select **Apply** > **OK** to save.



5. Disable motion and shadow effects

On Windows operating system motion effects and shadows are enabled by default. However, to make your computer boot faster and run smoother, you should turn this feature off.

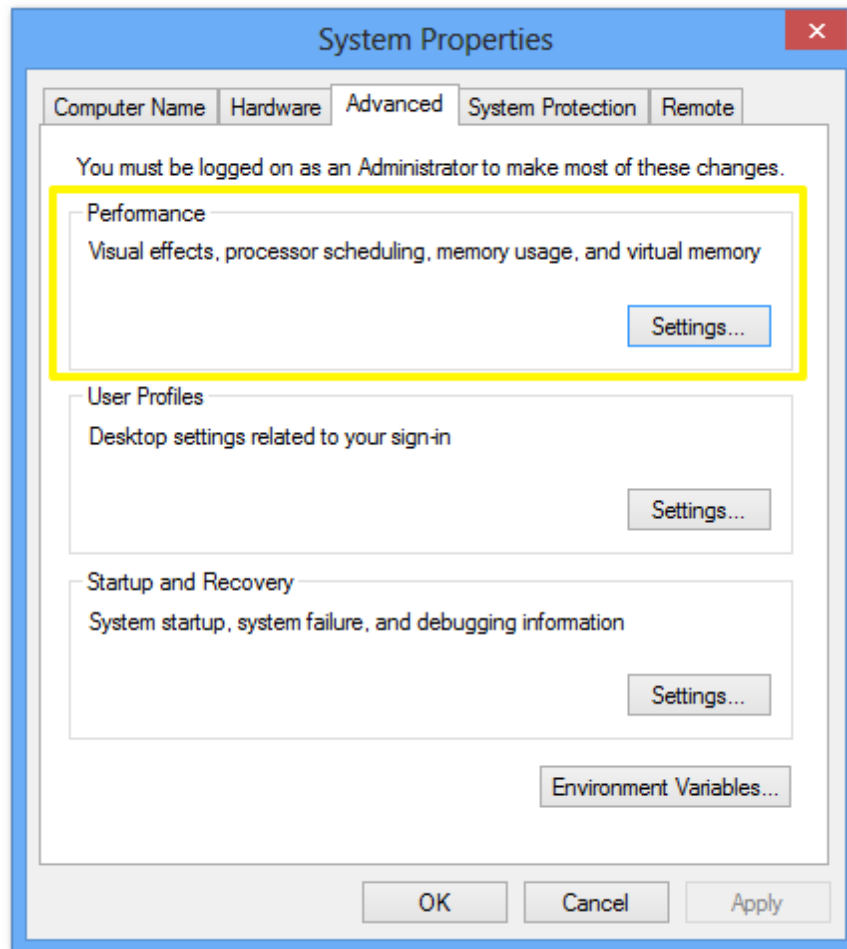
Step 1:

Press the **Windows + R** key combination to open the Run command window.

Then enter **sysdm.cpl** in the Run command window and press **Enter** .

Step 2:

On the System Properties interface, click the **Advanced** tab .



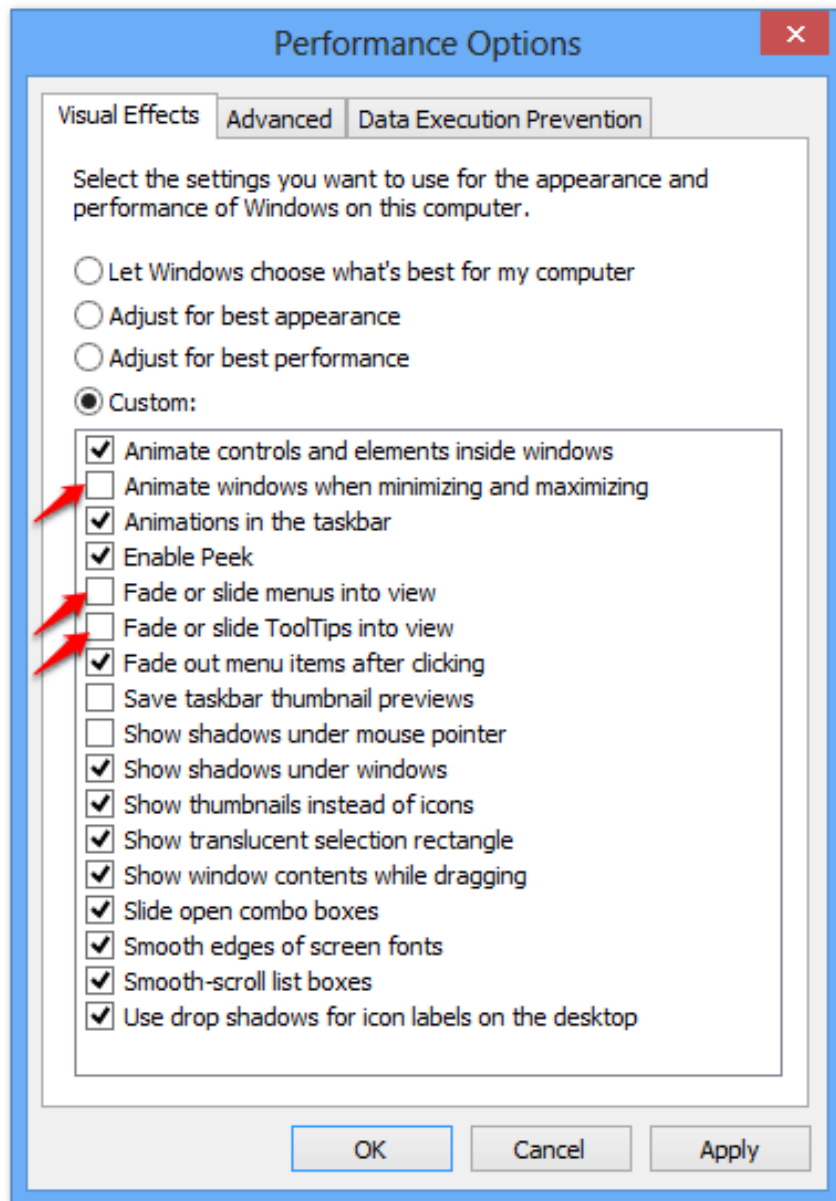
Step 3:

Click **Settings** and proceed to reset the Performance section.

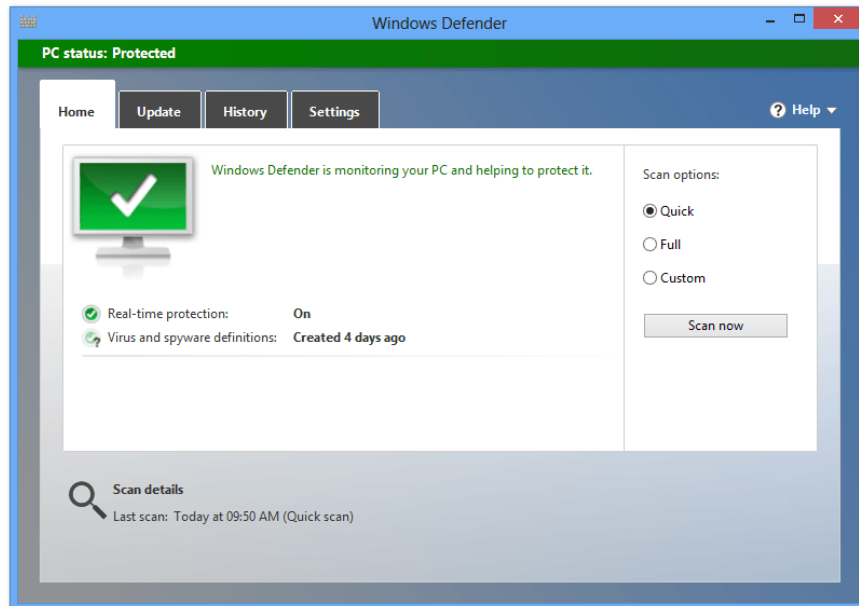
Step 4:

In the **Visual Effect** tab, proceed to uncheck the options below:

1. Animate windows when minimizing and maximizing
2. Phiên b?n hay trình bày vào trình xem
3. Fade or slide ToolTips into view



6. Use Windows Defender



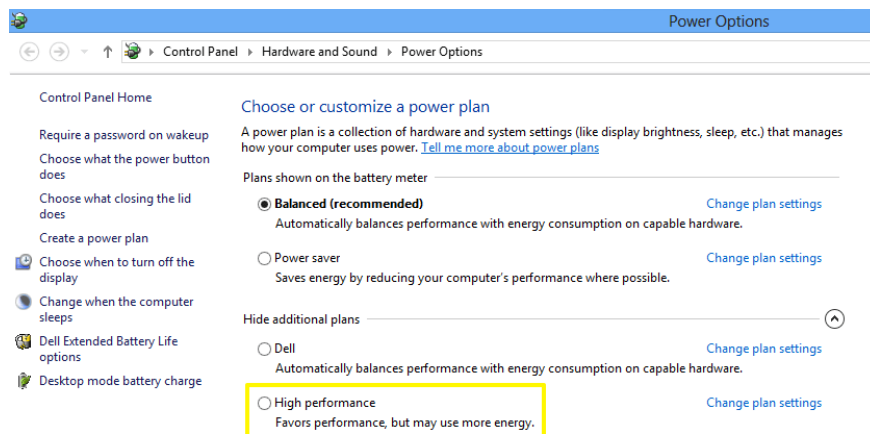
There are now many anti-virus tools and software. However, the limitations of these tools are quite heavy, even causing your computer to slow down gradually.

If you are looking for a tool to remove viruses, it is recommended to use Windows Defender. Microsoft's Windows Defender is a tool that effectively removes viruses, spyware and malware.

In addition, when comparing Windows Defender with other antivirus programs and tools, the advantage of Windows Defender is that it takes up less memory space. While Impact Scripts with other antivirus software are quite high - one of the reasons your computer is slow.

Using Windows Defender and regular tool updates will help improve your computer's performance. In addition, Windows Defender also includes a firewall that blocks unwanted Internet connections and protects your data.

7. Manage Power Plan settings



In Power settings on Windows 8, there are 3 Power Plan settings available: Power Saver, Balance and High Performance.

Usually your computer runs in Balance Power settings. In Balance Mode, your computer is running normally and saving power without using it. Balance mode is the best option to extend your laptop battery life.

High Performance mode is used when you play games, or highly interactive programs. When in High Performance mode, the CPU will run out of power.

However, note that High Performance mode will reduce your laptop battery life.

Speed up Windows 8 computers

8. Stop using Windows Indexing

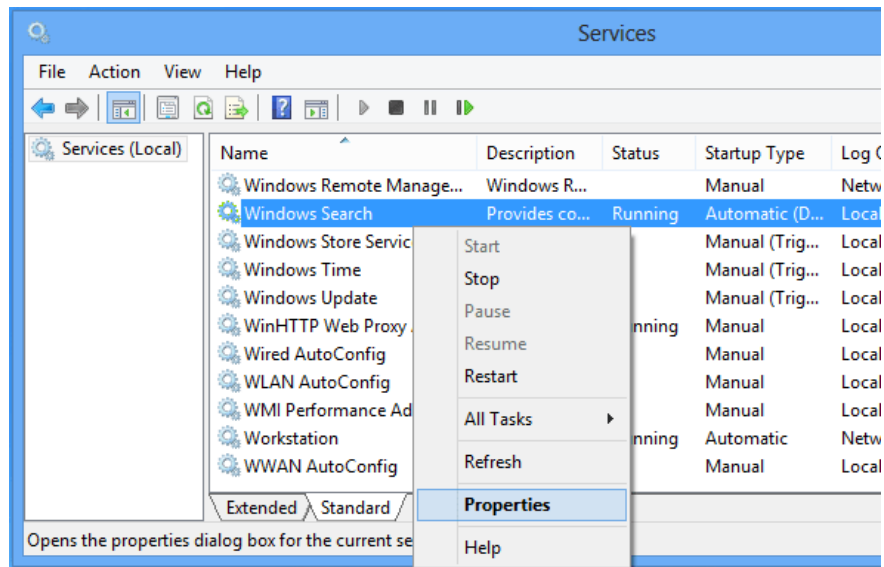
The Windows Indexing Service (Windows Index Service) service is designed to speed up file searches on computers, especially computers with large hard drives.

However, if your Windows 8 computer is too slow, you can disable the Indexing Service index service. However, be aware that when you disable the Indexing Service index service, the search process on your Windows 8 computer will be slow.

Step 1:

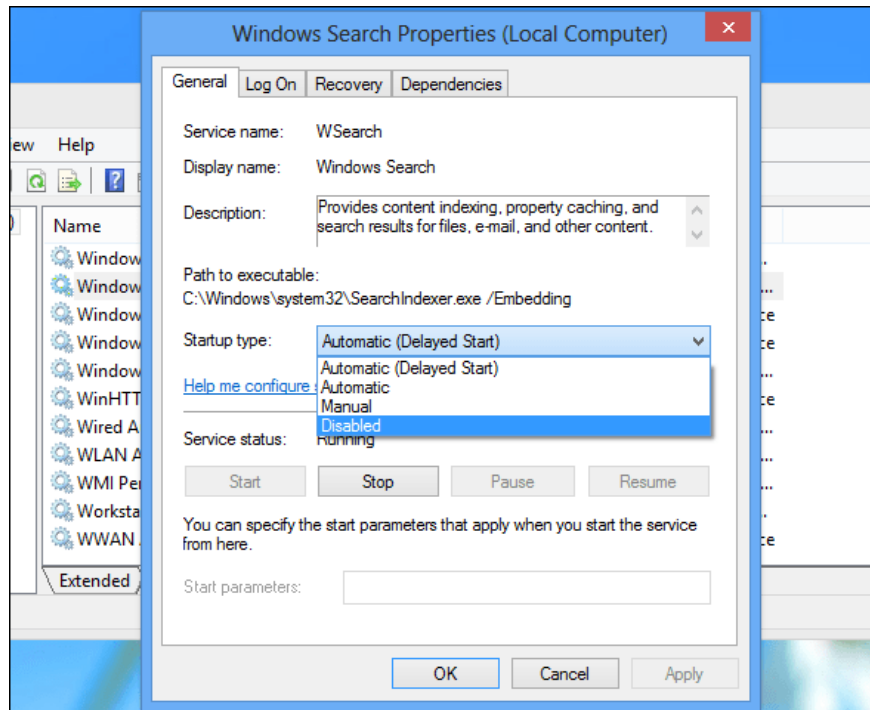
Press **Windows + R** key combination to open the Run command window, then enter **services.msc** into the Run command window and press **Enter** to open the Service window.

Next on the Services window, find the **Windows Search service**, right-click it and select **Properties**.

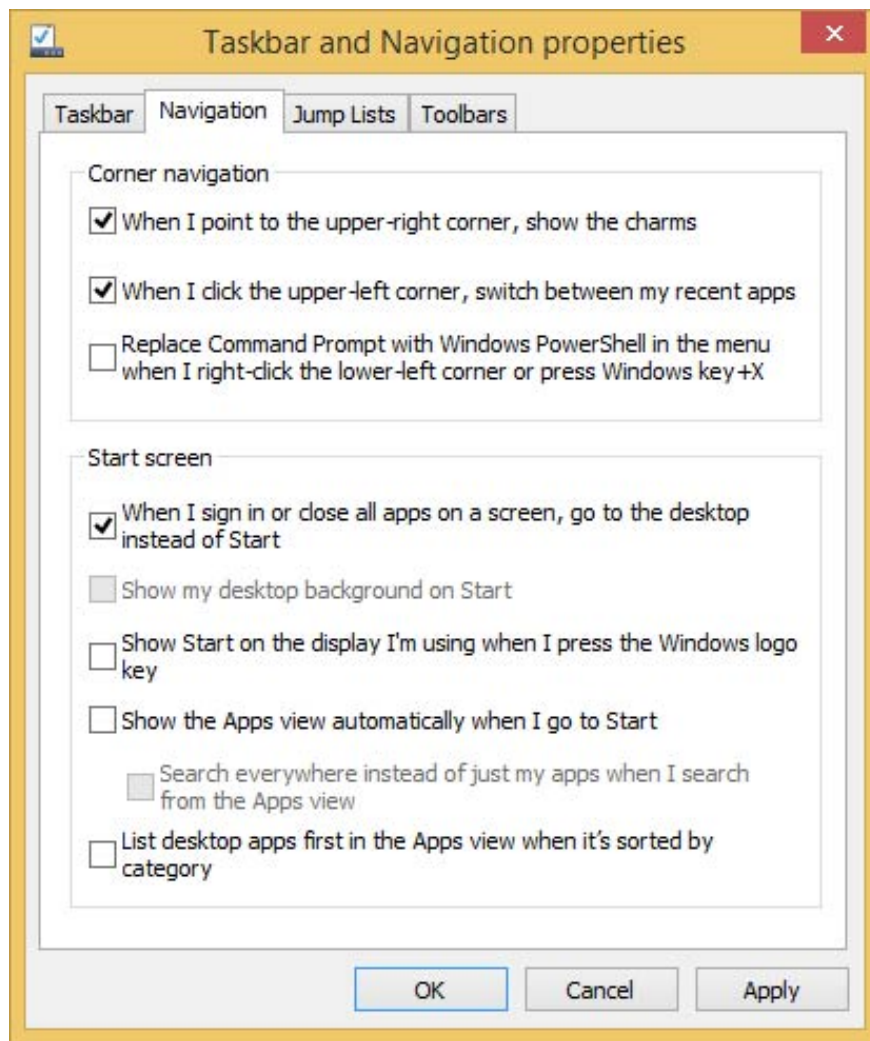


Step 2:

On the Properties window, set the **Start up type to Disabled**.



9. Boot directly into Windows Desktop



On Windows 8.1, the computer will load the traditional Desktop without having to open the Start Screen. However, this feature is only available on Windows 8.1.

To access the Boot to Desktop option, open the Taskbar Properties window. Next on the Properties window you select the **Navigation** tab. Here you will see the option **When I Sign in or Closing the Application On a Screen, go to the Desktop instead of Start.**

Just enable this option to start your Windows 8.1 computer directly in Desktop mode.

In addition, you can apply some Registry tips to speed up your Windows 8 computer faster. Refer to the steps here.

Refer to some of the following articles:

1. 23 useful tips for Windows 8.1 users to know
1. 2 steps to open virtual keyboard in Windows XP / 7/8 / 8.1
1. 11 tips to help you fix 100% Full Disk error on Windows 10

Wish you have moments of fun!

You finished reading the article "**Some tips to speed up Windows 8 boot process**" edited by the [TipsMake](#) team. We hope this article has provided you with many useful tech tips and tricks. You can search for similar articles on tips and guides. Thank you for reading and for following us regularly.
