

# Some software helps computers, laptops to play free Wifi

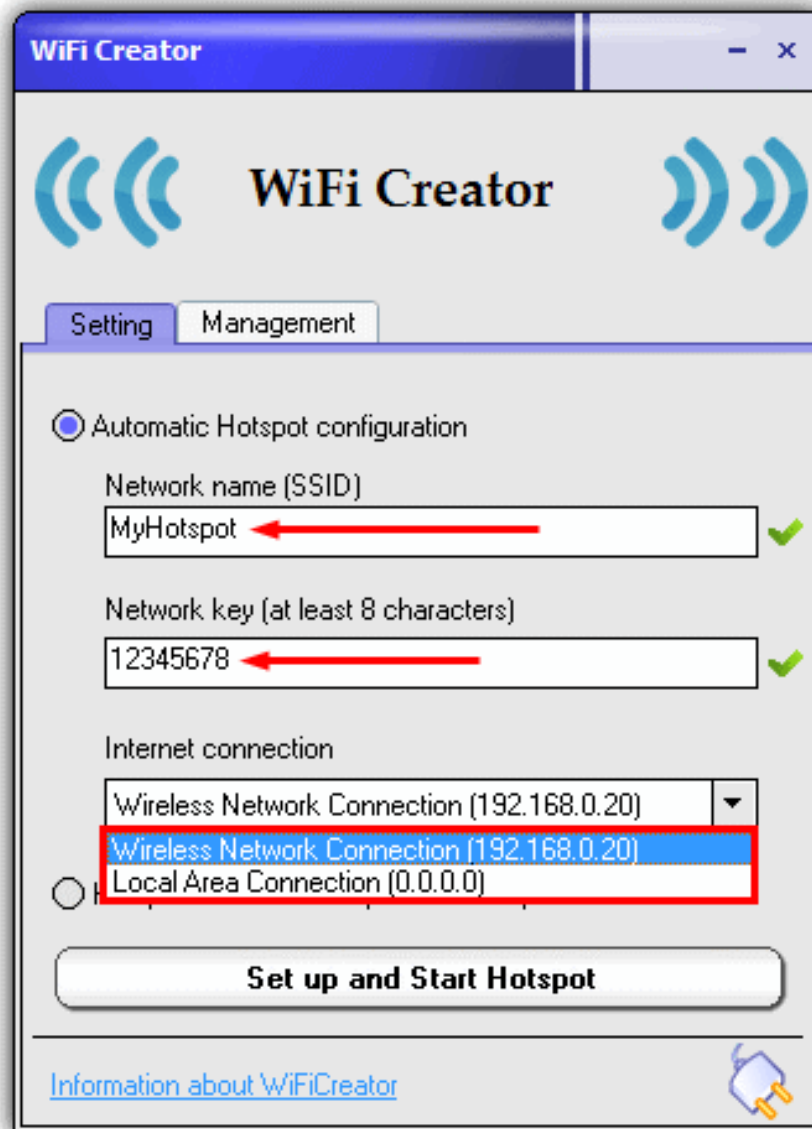
No need to spend money buying Wifi transmitters. Did you know that your laptop can also play Wifi that your phone or computer, laptop can connect and access the network.

Free Wifi distribution right on your Laptop. Even smartphones, tablets or laptops can connect to Wi-Fi and Internet access. Here are simple steps to guide you how to install free Wifi broadcast software right on your own Laptop.

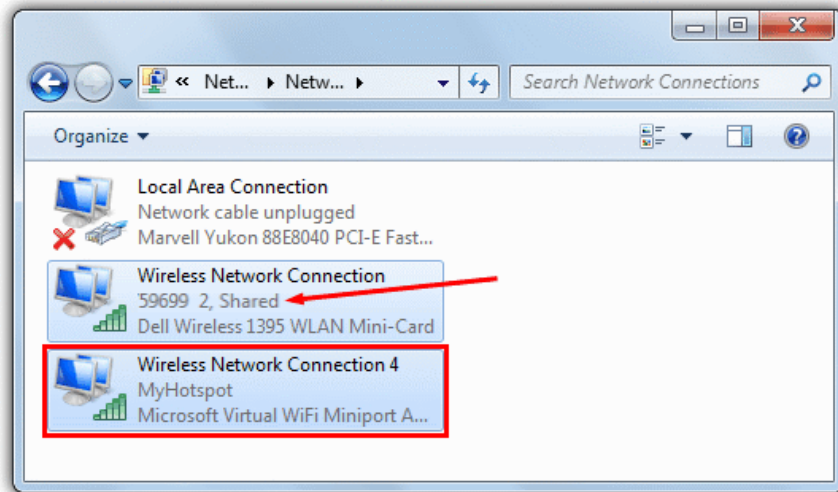
## I. Installing Hotspot to your computer

1. Download **Wifi Creator** to your device here and install.
2. Open **Wifi Creator** that you just installed, select **Automatic** configuration (automatic configuration).

You can use the default setting or change **Hotspot** settings by changing the new name and new password to 8 characters or more.



1. **Network name (SSID):** Wifi wave name
2. **Network key:** Password / password to access Wifi
3. Click on "**Set up and Start Hotspot**" (set up and start Hotspot) to set up the process of creating an **Adapter** - the virtual network card functions like a real network card.



Select the connection type you want to create. The program provides various connection types, you choose **Wireless Network Connection** to share Wifi. After setting up, click **Start** to start the wifi playback.

More reference: How to use Connectify 2015 to play Wifi?

## II. Install software to login

### 1. ARPMiner

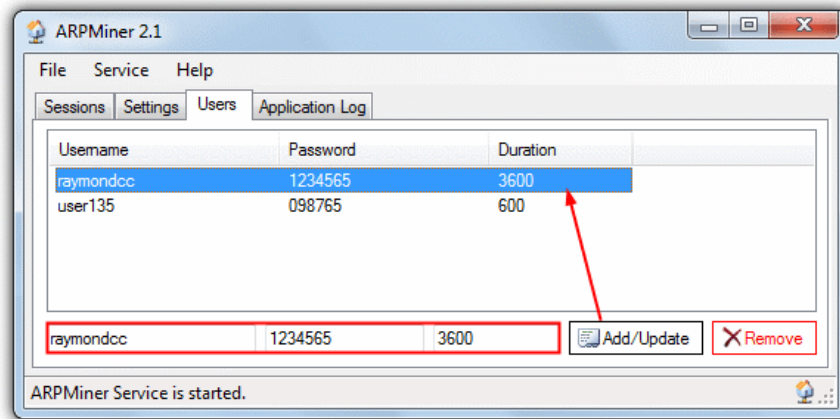
#### Step 1 :

Download the **ARPMiner** here for your device and install it. After installation is complete, start the **ARPMiner** to make sure **Wifi Creator Hotspot** is ready to work.

Make sure that when you turn on the **Firewall** , **TekpSpot.exe** is allowed by **Firewall** . In the case of testing, you can temporarily disable **Firewall** (firewall).

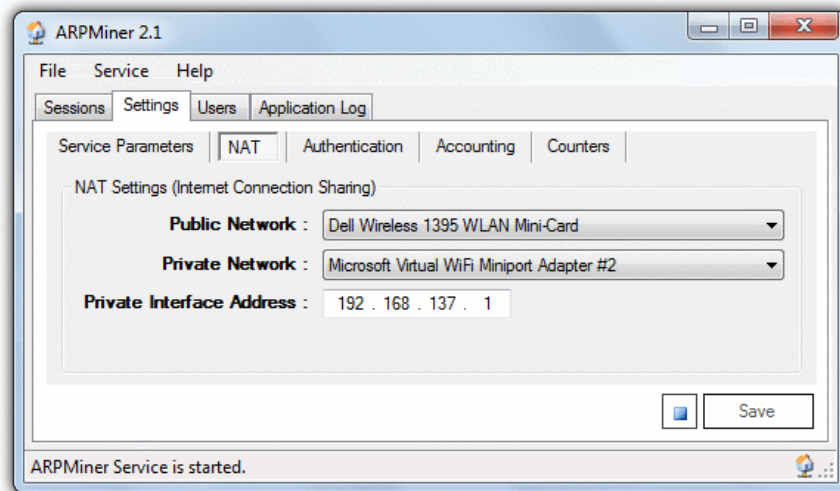
#### Step 2:

Go to the **Users** tab and create a new **Hotspot** username. Type in the name and password in the box below. Click **Add / Update** to add new users to the system.



### Step 3:

Click the **Settings** tab and then click on the **NAT** at the bottom to set up **Internet Connection Sharing** that you created with **Wifi Creator** before. If you create other settings, **ARPMiner** will not work.



Make sure that the Direct **Internet Connection Adapter** is set up as **Public Network** and **Virtual WiFi Miniport adapter** created by the **hotspot** is **Private Network** . Click **Save** and then click on the **Start** button icon to start Wifi playback on the **ARPMiner**.

### Step 4:

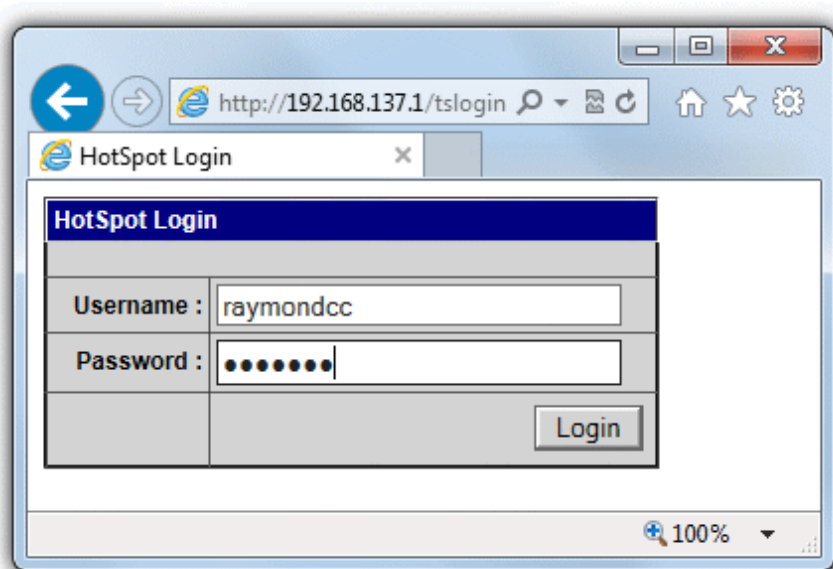
Open the computer on which you want to connect to the network and search for the **Hotspots** you created earlier, then proceed to the connection. The default **SSID** (Wifi Wave Name) is '**My Hotspot**' and the default password is '**12345678**'.



In addition, other devices such as tablets or smartphones can also search and connect the **Hotspots** you have created.

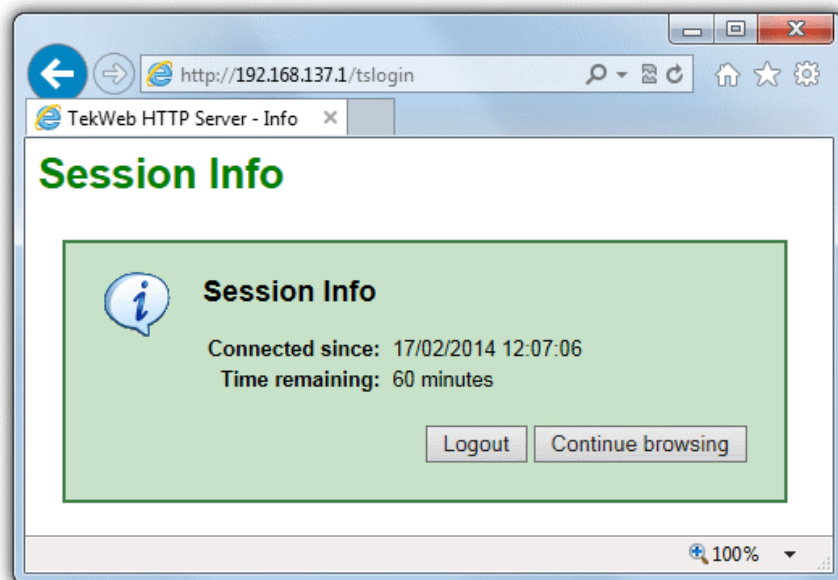
**Step 5:**

On your browser, open a website and navigate to the **ARPMiner** login page, you can search for any information you have created in the **User** tab that you did in step 2.



### Step 6:

After clicking **Login** , you will be redirected to the **Session Information** page. On the **Session Information** page will show you how long it will take to connect. After the connection time has expired, you will be sent to log in again.



You can check the user status from the **Session** tab on **ARPMIner** , **IP / MAC address** , user name being used and when the current version expires. To disable the login box, simply select **Stop** in the **Settings** tab.

See also: Broadcast Wifi on your computer is simple with mHotspot

## 2. Microsolut

### Step 1:

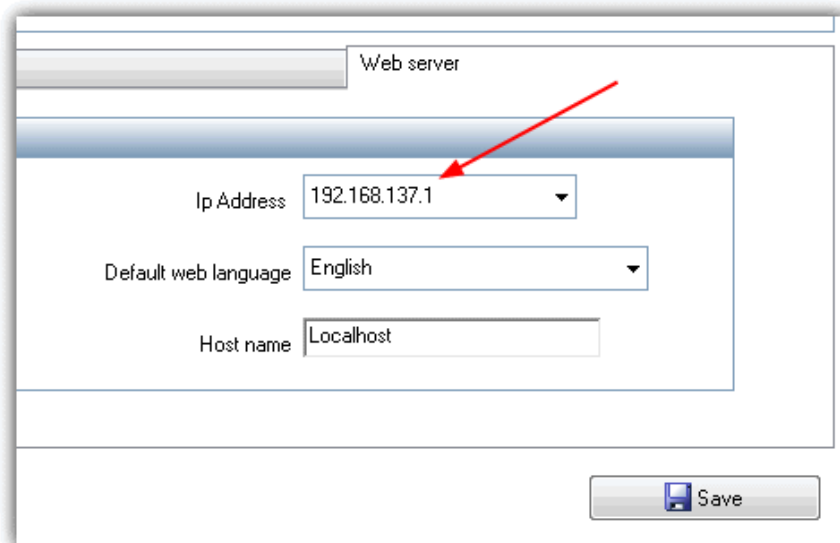
Download **Microsol** here and install, using **Default Options** (default option). Make sure **Wifi Creator** is still open and active.

### Step 2:

Start the program. When the **Login** (login) window appears, simply select **Login** . The server username and password can be reconfigured later.

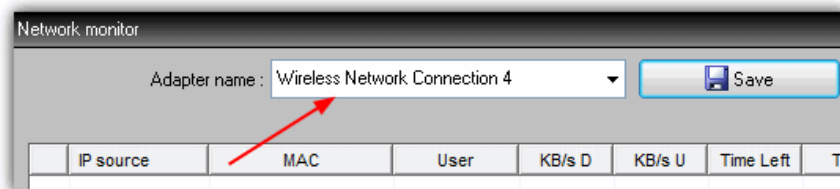
### Step 3:

Click **Setup** (install / set) -> **Web Server** (Web server) on the left side of the **Menu** and drag down the **IP Address** section to select the address line '**192.168.137.1**' and click **Save**.



### Step 4:

Go to **Connections** => **Monitor** and scroll down to the **Adapter Name** section , select **Adapter** created by **Wifi Creator Hotspot** software. You can check the name in the **Network and Sharing Center** section . Then click **Save**.



### Step 5:

To quickly test your **Hotspot** again, Click **Start Hotspot** . If the popup **Firewall** window appears, click **Allow**.

**Go to General** => **Accounts**, a **TEST user** account will retry the configuration of the user using your network. To change the **TEST user** account options , then select **Modify** , enter any positive number in the '**Expire in**'

box .

Password  Price  \$

Enable unlimited Bandwidth

Time left  hours  Enable unlimited access time

Expire in  days  Enable unlimited Quota

Activate Daily time

Uncheck **Print Ticket** and click **Save**.

### Step 6:

Using a device that can connect to the access point, find the WiFi connection as in step 4 in the **ARPMine** section .

Open a web page in the browser, access the login page set to accept **user TEST** , check the box to accept the terms, then click **Go**.

**My Hotel. Acceso a Internet**

Avda del Faro 99. Tel 987272367  
Mar (VLC)

Language

Try Free Internet connection for 5 minutes  
Username: TEST Password: TEST

Username  Password

I agree the Terms and Conditions of this site

A welcome window will display your account limit, then wait about 5 minutes to browse before your account expires. Unlike the **ARPMine** , in **Microsolut** , these 5 minutes are used to adjust the **MAC** address and you have to wait until the **MAC** is removed from the **Test Access** installation window .

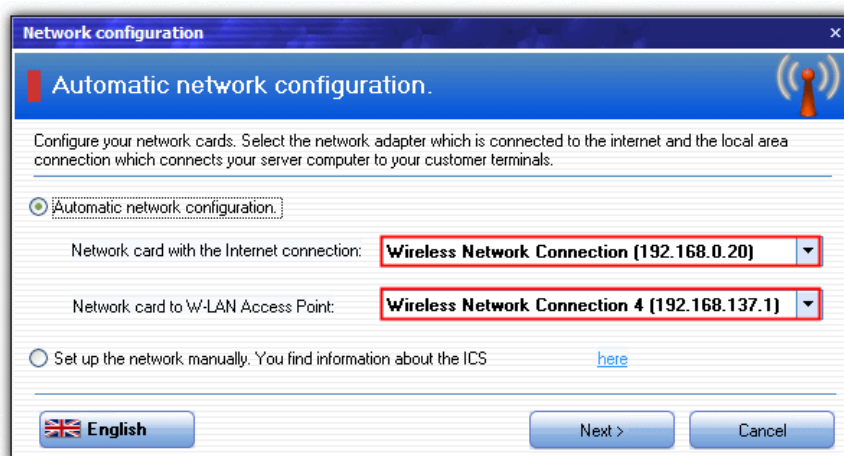
## 3. MyHotSpot

### Step 1:

Download **MyHotSpot** here and install it. After installation is complete, you will receive a request to notify you to restart the computer. Make sure your **Wifi Hotspot** does n't work after restarting the machine.

### Step 2:

Start the program and **configure the Network (Network Configuration window) window** , make sure that **Automatic** option is selected and select **Adapter** to connect to the **Internet** . Click **Next**.

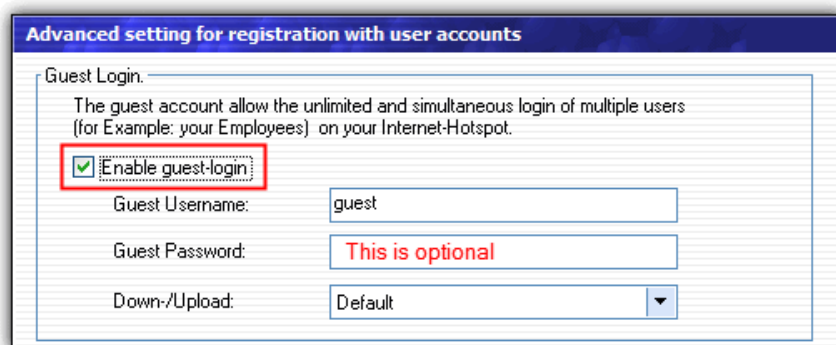


### Step 3:

Enter a city name and country name in the next window. Then enter the username and password when requested and click **Login** .

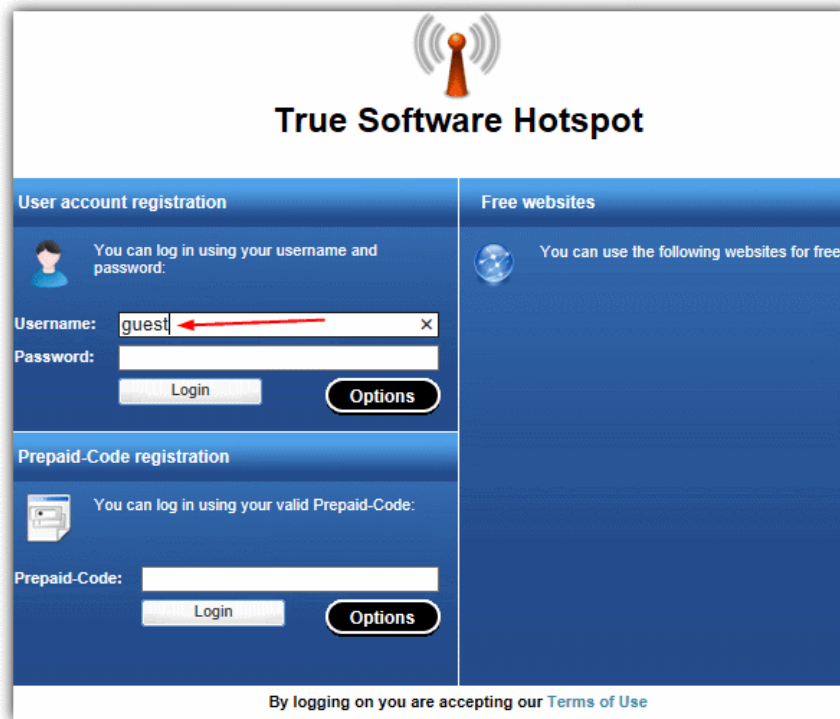
### Step 4:

Click on **Edit -> Hotspot Configuration -> Access menu** , then click on the blue **Advanced** settings section. Check the " **Enable guest-login**" (allow guest login), add an optional password, then click **Close** .



### Step 5:

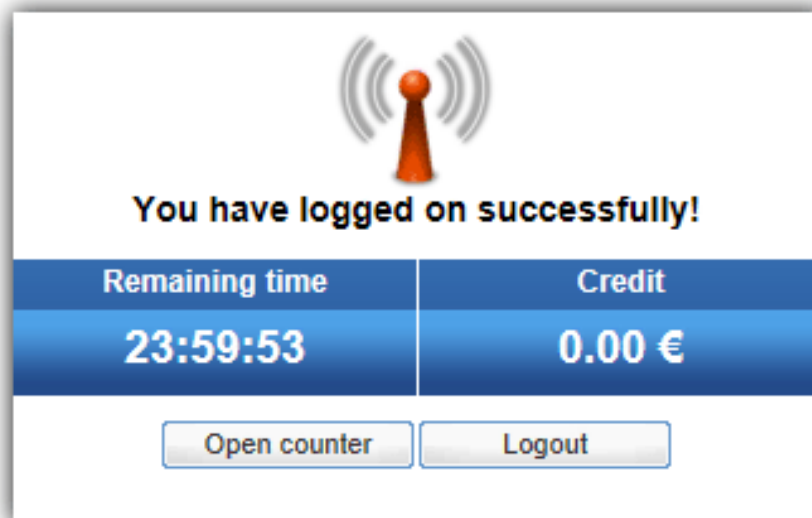
Similar to the above **Hotspot** software, all you need is to use a device that can connect to the access point, such as another computer or tablet, smartphone . to connect (remember to wear set to "**MyHotspot**" and the password is "**12345678**" ). Then proceed to open a default login site **MyHotspot** on the browser .



The image shows the login page for 'True Software Hotspot'. At the top, there is a wireless signal icon and the title 'True Software Hotspot'. The page is divided into two main sections: 'User account registration' and 'Prepaid-Code registration'. The 'User account registration' section has a sub-header 'You can log in using your username and password:' and contains a 'Username:' field with 'guest' entered, a 'Password:' field, and 'Login' and 'Options' buttons. The 'Prepaid-Code registration' section has a sub-header 'You can log in using your valid Prepaid-Code:' and contains a 'Prepaid-Code:' field, a 'Login' button, and an 'Options' button. To the right, there is a 'Free websites' section with a sub-header 'You can use the following websites for free:' and a globe icon. At the bottom, a footer states 'By logging on you are accepting our Terms of Use'.

### Step 6:

Simply type in the username on the "**Guest**" section and the password to login. If you have everything set up as the steps, a successful login notification window will appear.



The image shows a successful login notification window. At the top, there is a wireless signal icon and the text 'You have logged on successfully!'. Below this, there is a table with two columns: 'Remaining time' and 'Credit'. The 'Remaining time' column shows '23:59:53' and the 'Credit' column shows '0.00 €'. At the bottom, there are two buttons: 'Open counter' and 'Logout'.

Remaining time	Credit
23:59:53	0.00 €

**Good luck!**

You finished reading the article "**Some software helps computers, laptops to play free Wifi**" edited by the [TipsMake](#) team. We hope this article has provided you with many useful tech tips and tricks. You can search for similar articles on tips and guides. Thank you for reading and for following us regularly.