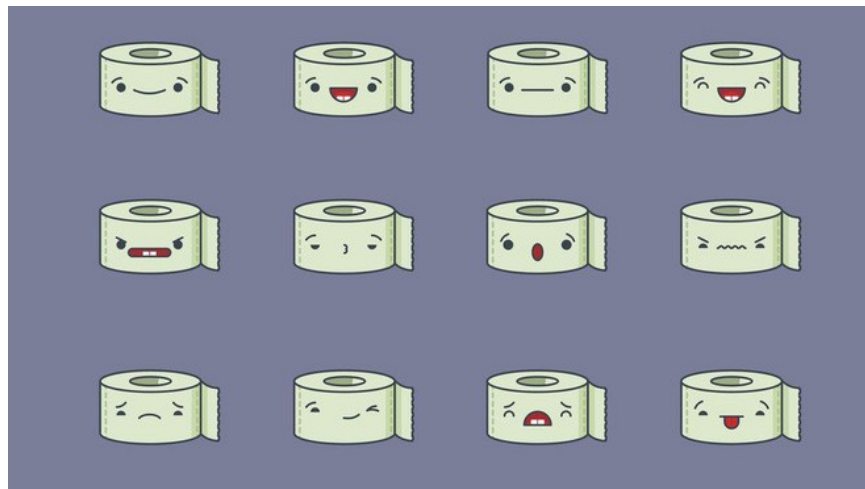


Smart toilets can identify your 'backhole' and take photos for research scientists

Face recognition is old, now there's anal recognition too, of course, for scientific research.

According to a recent article in the journal Nature, scientists at Stanford University are conducting a very unique study: Taking pictures of human anus when they go to the toilet to test and assess the situation. their health status.

Specifically, scientists have invented a system to track the ability of 'letting go of sadness' of specific individuals in a certain time. All collected data (mostly images) are carefully stored by cloud computing technology, and play an important role in the research process for public health purposes. Although the world has embraced so many smart toilets in the past few years, this is probably the first time a toilet has been able to recognize and take pictures of people's backdoors.

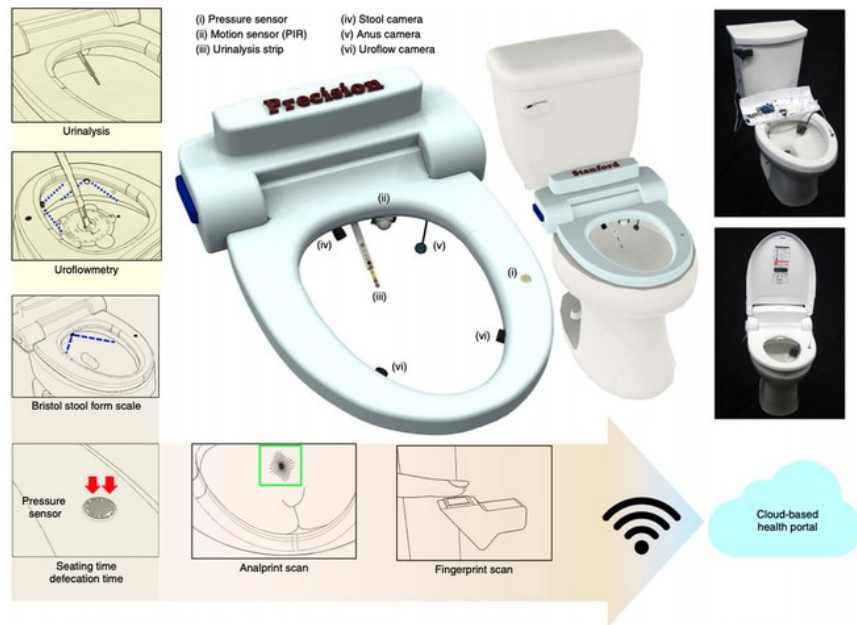


From defecation, scientists can assess the health status of people.

This special toilet, called Precision Health Toilet, is equipped with up to 4 cameras for different purposes: 1 stool stool, 1 anal stool and 2 urine flow monitors. The camera system will help the toilet analyze the quality as well as sort the human waste.

To avoid data confusion, Precision Health Toilet also has a built-in 2-layer identifier to distinguish between different users and their respective waste. The first layer of identification is the fingerprint sensor mounted on the water dispenser. The second layer is the aforementioned anal hole camera. Scientists say the purpose of this security technology is to avoid confusion and data tampering during the user's experience.

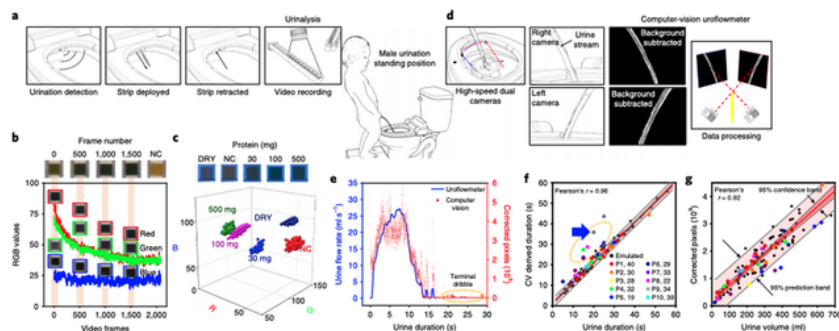
Professor Seung-min Park, co-author of this unique study, said: ' *The use of human waste and anus as a biometric identifier is not a new topic. Since the last century, great artist Salvador Dalí has discovered that on each anal hole there are about 35 to 37 different wrinkles, unique like fingerprints .*



This special toilet is equipped with camera system and advanced security layer.

The most important thing in this paper is that all data is sent to the cloud instead of stored in the toilet. Professor Park said: ' *All information collected in the form of images and videos are clearly annotated and detailed by each specific user. They are then stored in the cloud via a wireless connection so scientists can easily download and conduct research* '.

In addition, Professor Park emphasized that the privacy of the test participants is the top priority in this study: ' *We are always careful with the data collected from the users. The process of sending their photos, data, sensitive information is all end-to-end encrypted to ensure confidentiality. We have also used a special algorithm to classify anal photo data, capable of automatically processing data without human intervention .* ' In addition, users' images are encrypted and stored in an absolutely secure device.



The process of collecting and transmitting user data is encrypted and secured carefully.

Finally, Professor Park said the development of Precision Health Toilet is the first step in the public health research process. This includes the diagnosis of common conditions like prostate enlargement, irritable bowel syndrome and urinary tract infections: '*This special toilet will play an important role in health research. of human. It can silently observe and track users without really interfering or affecting too much of their lives .*'

You finished reading the article "**Smart toilets can identify your 'backhole' and take photos for research scientists**" edited by the [TipsMake](#) team. We hope this article has provided you with many useful tech tips and tricks. You can search for similar articles on tips and guides. Thank you for reading and for following us regularly.