

Smart Home - What does a smart home have?

What does Smart Home technology include? Do you know the outstanding features of smart homes? Let's explore with HANOICOMPUTER

Technology 4.0 comes with the convenience of many smart devices, of which **smart home devices** are of the most interest, but not everyone clearly understands what a smart home is? Or what smart home devices include? Let's find out with TipsMake through this article.

1. What is a smart home?



A smart home (English: home automation, smart home or Intellihome) is a home equipped with smart devices, including: electrical and electronic devices that can be controlled automatically or semi-automatically. They can replace humans in performing one or more management and control operations. This electronic system often communicates with users through an electronic board placed in the house, smartphone or tablet applications or through a management website.

With the development of modern technology, smart home devices can automatically help you with tasks and operations in your smart home and simplify your actions. Everything will be automated by modern technology to help you have more time to relax and rest.



Everything in a smart home can be controlled through electronic devices and transmitted via Bluetooth, infrared, wifi., you will use your voice to control them through receiving devices such as smartphones, control devices,.

You can see smart home devices here

2. What are the classifications of smart home devices in Vietnam?

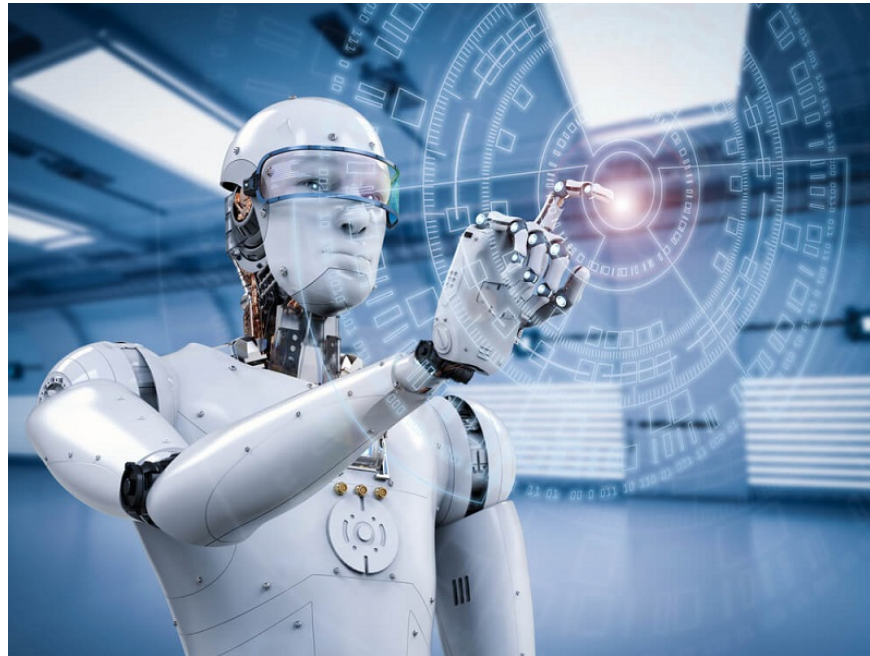
In a smart home, there are many different smart home devices with different designs, prices and qualities, however, modifying the whole house will cost quite a lot. And so there are currently 4 main groups of solutions, **smart home device solutions** for you to see and refer to:

a) Basic smart home devices

There are many basic items for a smart home, as you can see, including:

1. Central controller: As the brain, the CPU controls all smart devices.
1. Device Controller: Helps you control smart devices and check their performance.
2. Thermal sensor: Detects changes in temperature in the smart home.
3. Smoke sensor: The operating mechanism is similar to a fire alarm.
4. Motion sensor: Detects movement of objects when passing through the scanning area of the device.
5. Door opening and closing sensor: The sensor helps to open and close the door easily when detecting people passing by.
6. Humidity sensor: Measures humidity in the device's affected area
7. Other sensors: Some other sensors in smart homes such as: infrared sensors, repeaters.
8. Power Switch: Power Plug for Smart Home.
9. Power outlet: The outlet can be easily turned on and off via smartphone or voice simply and safely.
10. Alarm bell: Sensor when detecting burglary or dangerous situations.
11. Integrated smart door lock: Helps you lock/unlock the door via virtual assistant or smart devices.

With the above smart home devices, you can easily control the lighting system in your home to avoid wasting electricity. With sensor systems that detect motion or detect people to turn on other devices such as air conditioners, water heaters, exhaust fans, doorbells, etc.



The special thing is that you can set a timer for the devices or turn off the power outlet when not in use. This helps you not to worry every time you go out and forget to turn off those devices, just have a smartphone.

b) Smart door lock

1. This is the most useful and most used item in **smart home solutions**. Smart door locks from many reputable brands easily ensure absolute security for you, through the AI system that recognizes faces or fingerprints.



1. As soon as a burglary is detected, the system will send a security alert to the homeowner's smartphone or email to report it. You can learn more about the types of smart locks currently being sold on TipsMake's system here: <https://www.hacom.vn/khoa-cua-thong-minh>

c) Smart electrical equipment

Including devices related to the lighting system, helping to create a smart lighting system for your entire home. Smart lighting systems bring you conveniences in life such as:

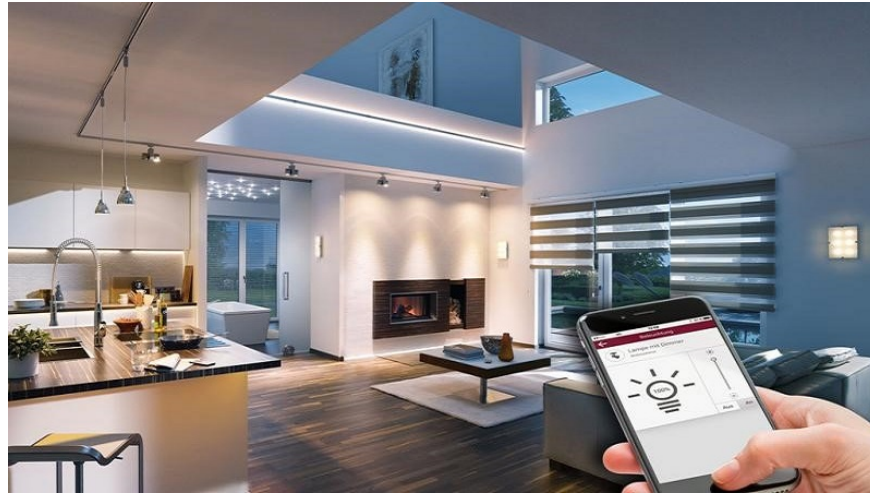
1. Turn ON/OFF the light with your smartphone wherever you are as long as there is internet.
2. Schedule lights in your smart home to turn on/off, according to your schedule.
3. Use virtual assistant to control simple lighting increase and decrease system.
4. Combined with smart sensor system to detect people, easily turn on/off lights or open/close curtains.



You can see more about smart electrical devices here: <https://www.hacom.vn/thiet-bi-dien-thong-minh>

d) Smart doorbell

Equally important is the smart doorbell system - This is an extremely necessary system to set up a smart home, in addition to the function of notifying guests coming to the house, the system also has the function of facial recognition via camera, connecting to listen to the voice (before opening the door) with the person ringing the bell, opening and locking the door. You can learn more at: <https://www.hacom.vn/chuong-cua-camera>



3. What is special about TipsMake's smart home devices?

1. European standard products, modern technology, global IoT, 100% genuine products help TipsMake customers around the world connect quickly and conveniently.
2. Products are diverse in design and reasonable in price. In addition, with the construction of a common ecosystem, devices can easily synchronize with each other.
3. Long-term warranty service, helping customers always satisfied when using TipsMake products, with a team of enthusiastic and experienced experts and technicians ready to advise on products 24/7. You can completely rest assured to renovate your home into a modern Smart Home with **smart home devices** .

You finished reading the article "**Smart Home - What does a smart home have?**" edited by the [TipsMake](#) team. We hope this article has provided you with many useful tech tips and tricks. You can search for similar articles on tips and guides. Thank you for reading and for following us regularly.