

Smart Connect: An incredibly seamless integration of the Android and Windows ecosystem.

Formerly known as Ready For, now renamed and upgraded to Motorola Smart Connect, this application has solved the problem of fragmentation between Windows and phones.

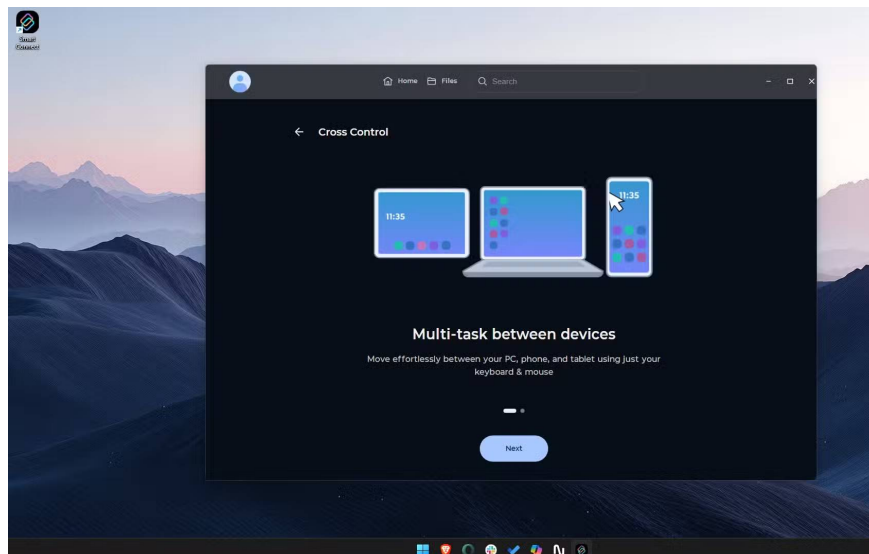
We've all probably felt a bit "envious" of those using super-fast computers when we see them effortlessly drag and drop files between their MacBooks and iPhones. Meanwhile, we – even with our powerful Windows machines – are constantly struggling with a mess of third-party applications and clumsy Bluetooth solutions.

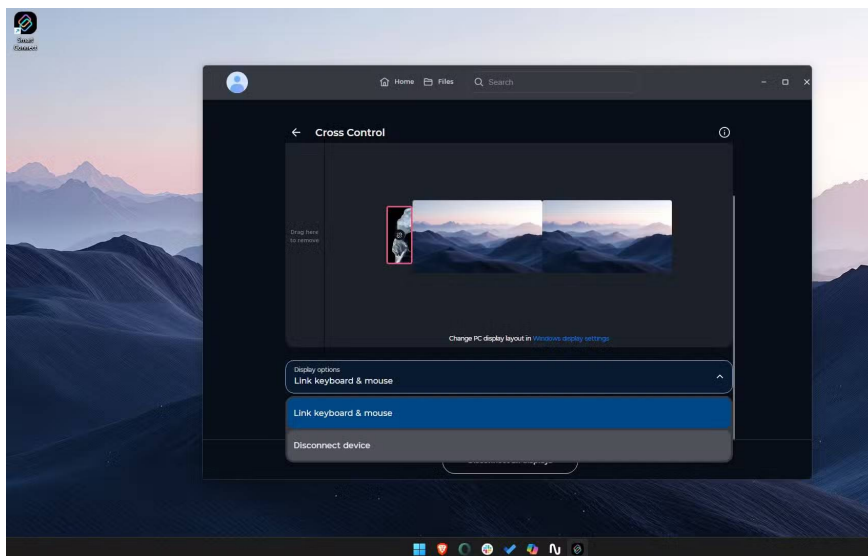
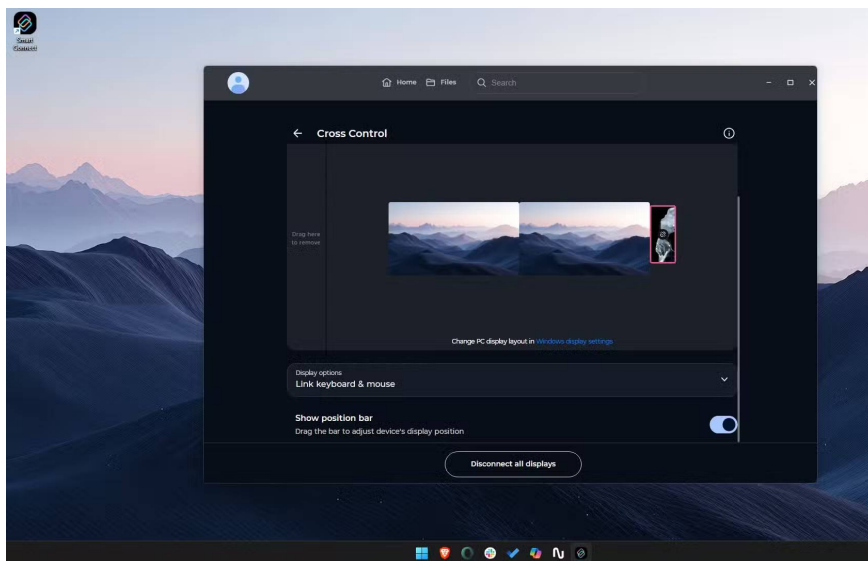
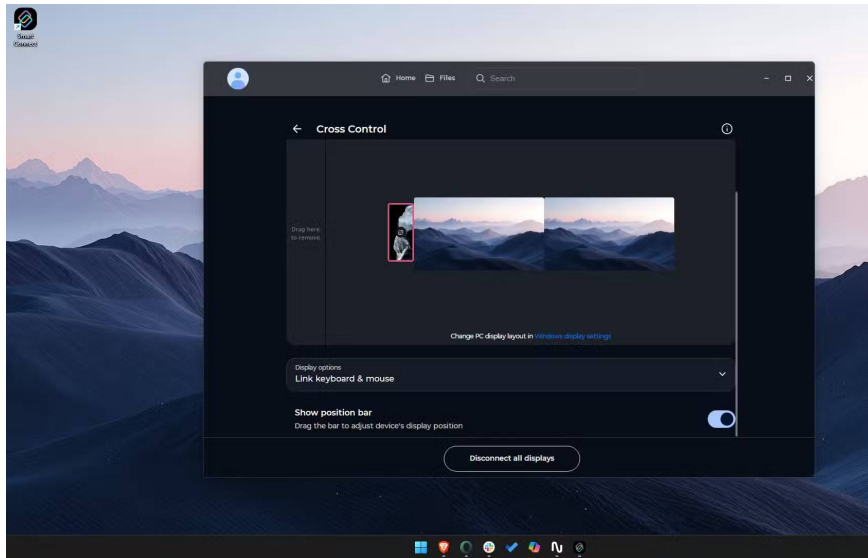
But quietly, amidst the fierce competition among high-end phones, Motorola polished a hidden gem to solve this problem. Formerly known as **Ready For**, now renamed and upgraded to **Motorola Smart Connect**, this application solved the fragmentation issue between Windows and phones.

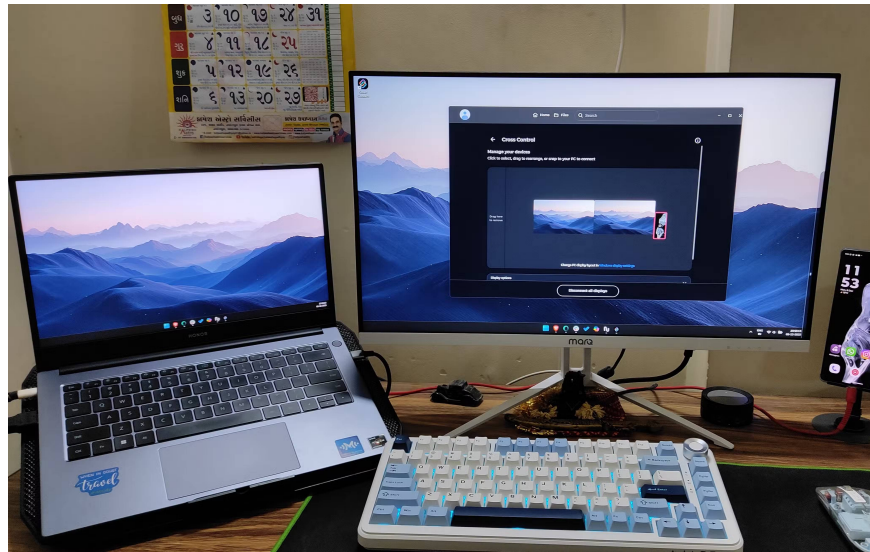
[Download Smart Connect for Android](#) [Download Smart Connect for iPhone](#)

Cross Control

One keyboard for all







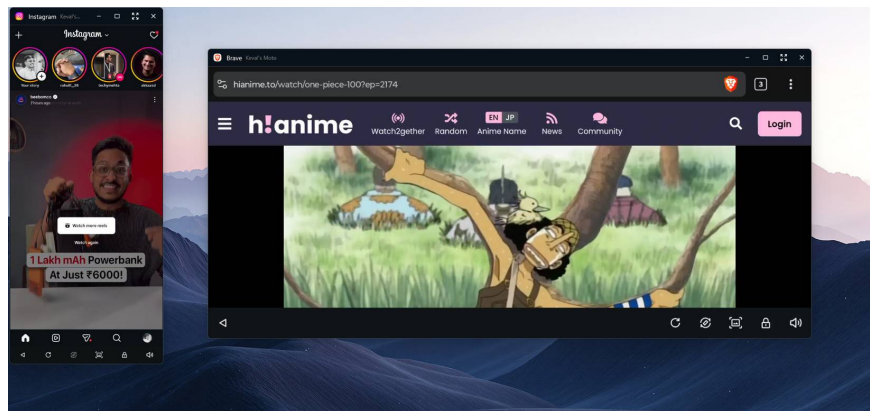
The impact of Smart Connect is felt within the first 5 minutes. As soon as you enable Cross Control, you unlock a whole new level of connectivity between your phone and your Windows computer. After arranging the virtual screens (just like you do on Windows with multiple monitors), set up your phone in the same layout you used in Smart Connect.

Once complete, your mouse cursor will no longer be stuck. Instead, it will fly off the edge of the screen and land seamlessly on your Android device. It feels like magic: no lag, no switch required, and no need to pair a multi-device Bluetooth mouse. It works smoothly. But the real productivity trick is the keyboard pass-through feature.

If you're working on your PC and a message pops up on your phone, you can click on it with your mouse and continue typing on your computer keyboard—no need to pick up your phone and distract yourself while working.

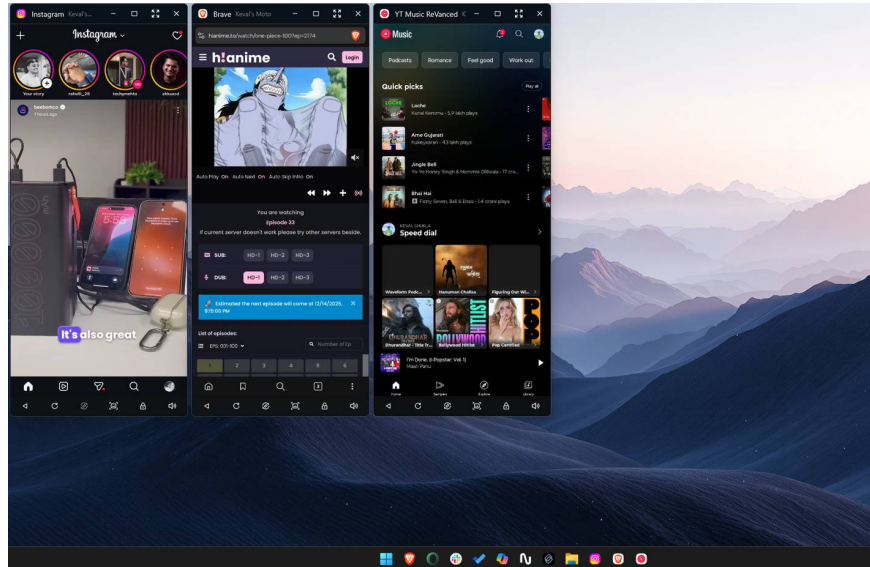
Streaming applications are really effective.

You deserve a better experience than just mirroring your phone screen to your computer.



Many tools claim to connect your phone to your computer, but ultimately only mirror your phone's screen to your PC. These apps do nothing more than project a simple, often non-interactive, video stream from your phone onto your computer.

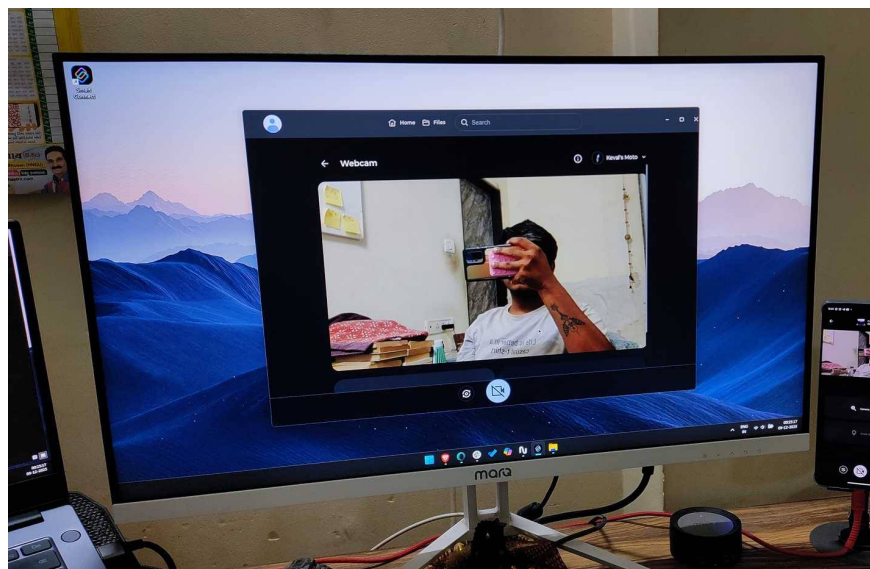
Smart Connect excels with its **App Streaming** feature . Instead of taking up the entire screen, Smart Connect allows you to stream specific Android applications as separate, interactive windows on your desktop.



This is a small but significant difference. You can run any app installed on your phone, such as X, WhatsApp , or Instagram , in a desktop window alongside Excel spreadsheets or other work-related applications you use. You can even pin these apps to the Windows taskbar or Start menu, just like other desktop applications.

Small but useful features

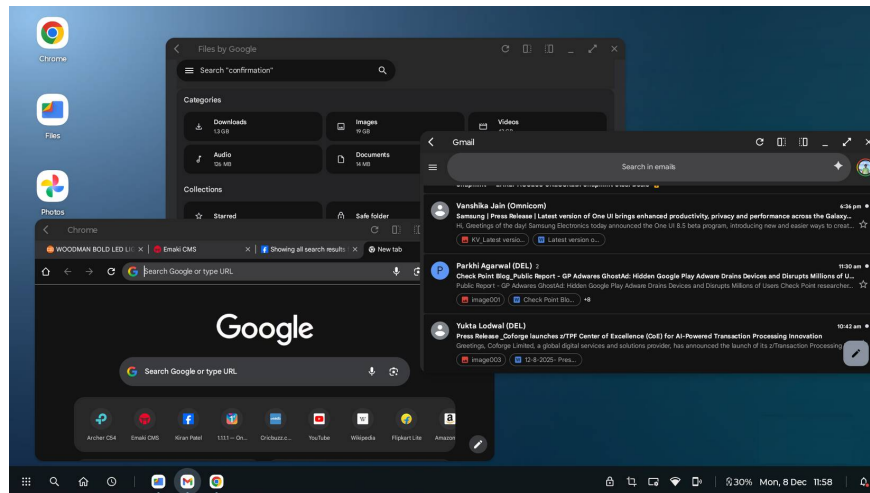
It's not all about outstanding features.



While features like Cross Control and App Streaming are eye-catching, Smart Connect offers much more. Features like **Share Hub**, **Universal Clipboard**, **Desktop Mode**, and **Webcam Utility** serve you well and don't need much explanation.

Thanks to its deep integration, the Share Hub feature makes sharing files between your desktop and phone easy. All you need to do is drag and drop. Then, in Windows File Explorer, select the file and drag it into the Share Hub pane; the transfer is complete.

Universal Clipboard is even more convenient. Just press **Ctrl + C** on your PC, then press and hold on the text field on your phone and paste. It's that easy; no need to manually text or mess with complicated syncing operations.



Smart Connect isn't limited to PCs. If you connect your phone to a TV or external monitor, Smart Connect creates a desktop environment. This is similar to Samsung's DeX mode, which turns your Samsung phone into a PC so you can work entirely from your phone. It creates a desktop environment, complete with multiple windows and good multitasking capabilities.

Finally, there's the Webcam Utility. As you may have noticed, most Windows laptops have low-quality webcams. That's why people use their phone cameras as webcams for their laptops. Smart Connect's webcam utility allows you to use both the front and rear cameras of your phone (with the rear camera usually having higher quality than the front camera) as webcams for your laptop. This will completely change the way you use your computer, especially if you frequently participate in Google Meet and Zoom calls on your laptop.

Smart Connect reveals a unified future.

Apple has long been praised for its "closed garden"—a fantastic ecosystem that works perfectly as long as you never step outside the gate. Motorola and Windows, through Smart Connect, are offering something arguably better: A closed garden with an open gate.

You get seamless drag-and-drop functionality, a versatile clipboard, and peripheral sharing that Apple users are proud of, all on the world's most flexible operating system. If you're a Windows user looking for a mobile partner that not only accepts your PC but also actively collaborates with it, Motorola currently offers the best

integration on the market.

You finished reading the article "**Smart Connect: An incredibly seamless integration of the Android and Windows ecosystem.**" edited by the [TipsMake](#) team. We hope this article has provided you with many useful tech tips and tricks. You can search for similar articles on tips and guides. Thank you for reading and for following us regularly.
