

# Simple way to fix Wifi disconnection error on Windows 10 laptop

The error of automatically disconnecting Wifi on Windows 10 laptops is a 'familiar' problem to many users. This condition greatly affects work and study

Similar to smartphones, users connect laptops to wifi to access the internet for purposes such as: handling work, studying or simply entertaining and relaxing. Normally, laptops catching wifi are also extremely simple and stable. But some users still encounter the error of automatically disconnecting Wifi on Windows 10 laptops, which is very annoying. If you are also having a 'headache' with this situation, learn the simple computer tips revealed by TipsMake below.



# Fix the error of automatically disconnecting Wifi on Windows 10 laptops effectively

Laptops often lose Wifi connection in Windows 10 + 11 for many reasons. It's possible that the wifi you're using is too weak and there are many people accessing it at the same time. Or the user changes the internal configuration while using, lacks a wifi driver, or even because the device is too old, some hardware is damaged, so the new wifi connection is unstable. However, there are many ways to fix the error of laptop automatically disconnecting wifi in Win 10 + 11 at home. Please try applying this to see if this situation still occurs or not.

## How to fix wifi

As I shared, the reason may be because the wifi you are trying to connect to is too weak and unstable. Especially for public wifi with too many users. So, users should try changing to another wifi network to see if it's due to the wifi or your laptop.

If you are using private wifi, first try turning the wifi router off and on again. Restart your PC and reconnect to your wifi. These are all simple but very useful tips. In addition, users should switch Home Network from Public to Private by: Clicking on the wifi icon on the taskbar > At the wifi you are connecting to, click Properties > In the Network Profile section, tick the Private box.

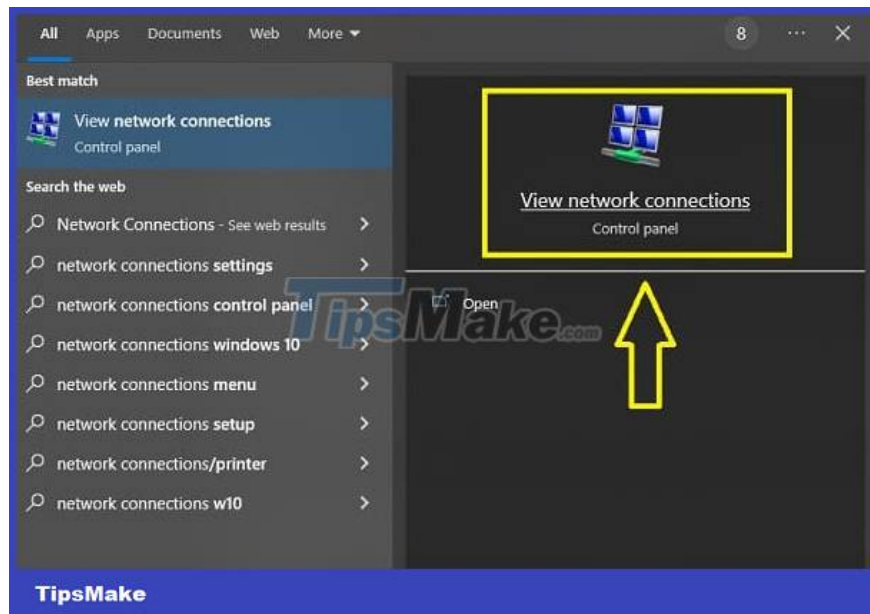
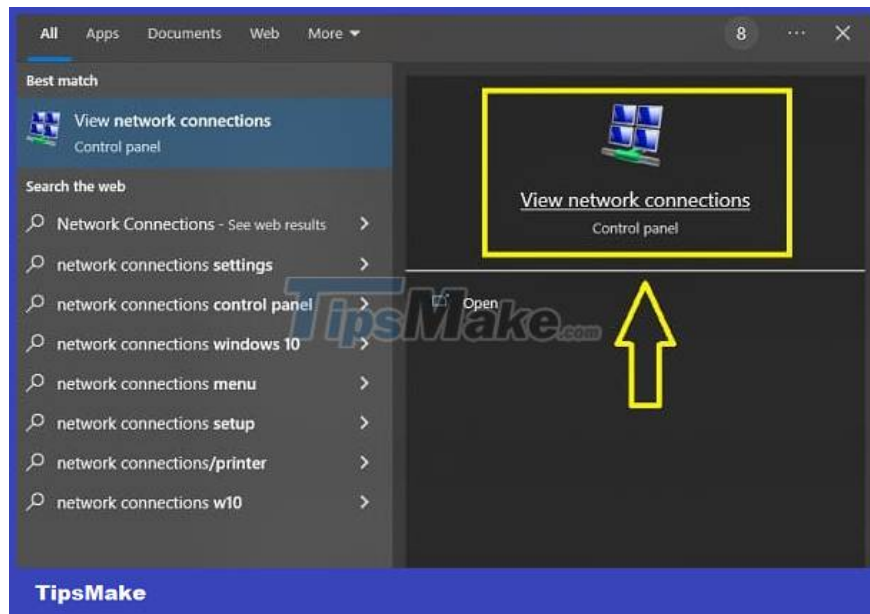


In case the cause is due to wifi, you can contact the network operator to have a technician check and guide you to fix the problem.

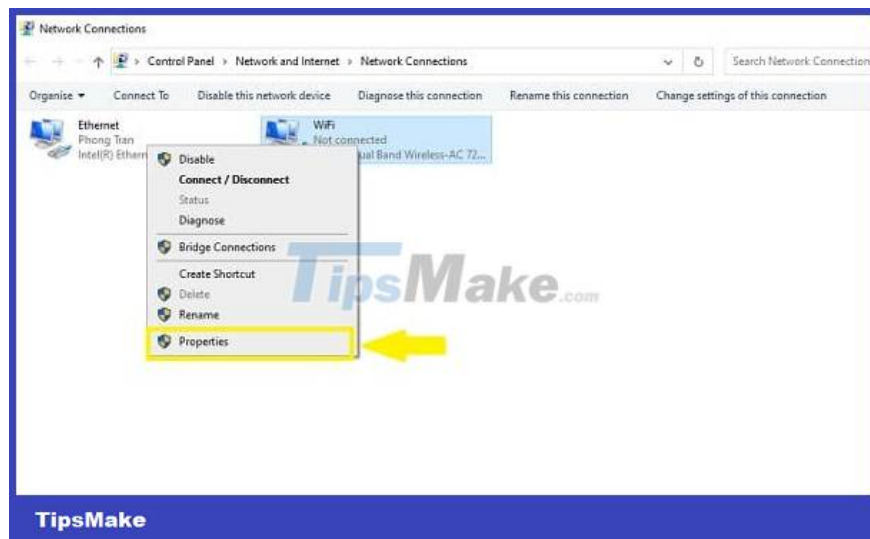
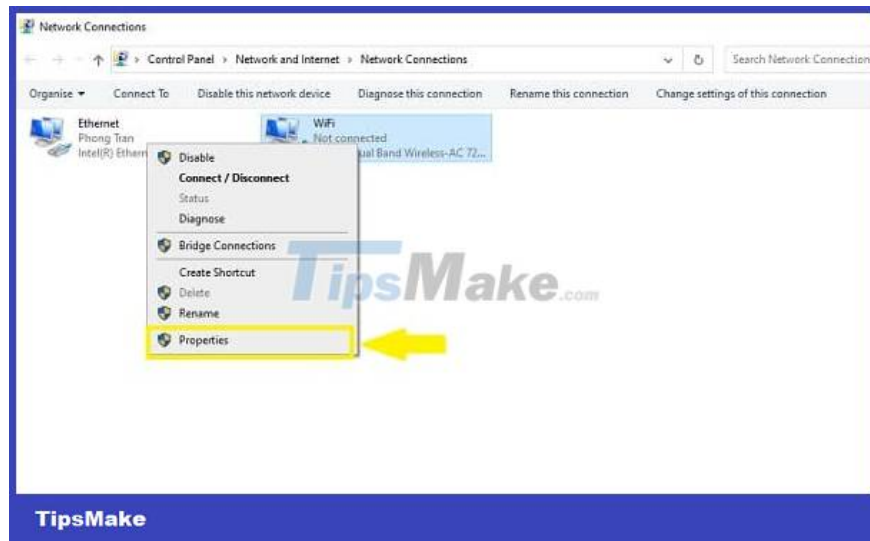
## Turn on Wifi even when the laptop is in Sleep mode

Sometimes it's because your laptop goes into Sleep mode that the wifi is turned off. To keep Wifi always ON, laptop users need to:

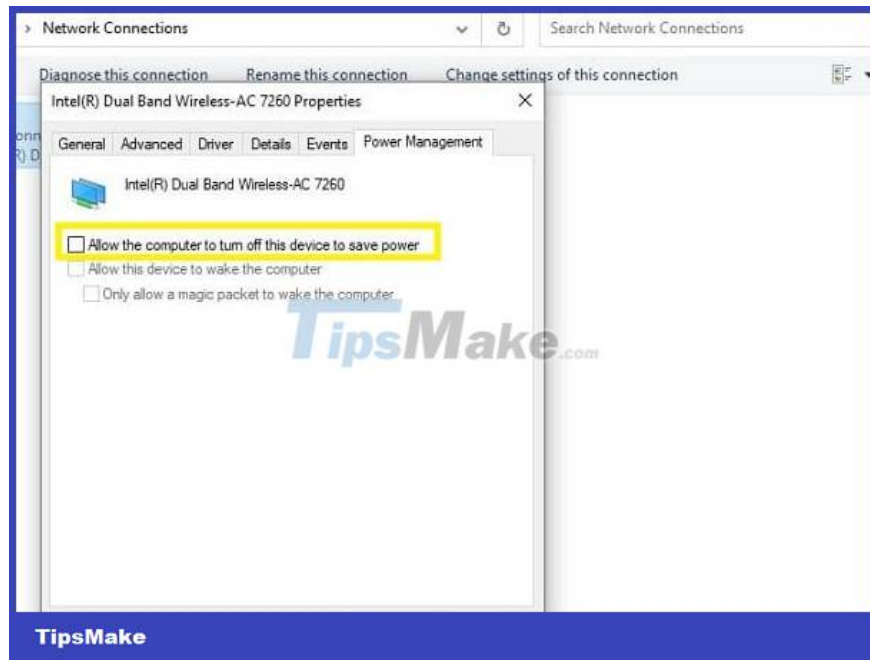
1. Press the key combination Windows + S then type Network Connections and click on the result.



1. Right-click on the wifi you are using and select Properties.

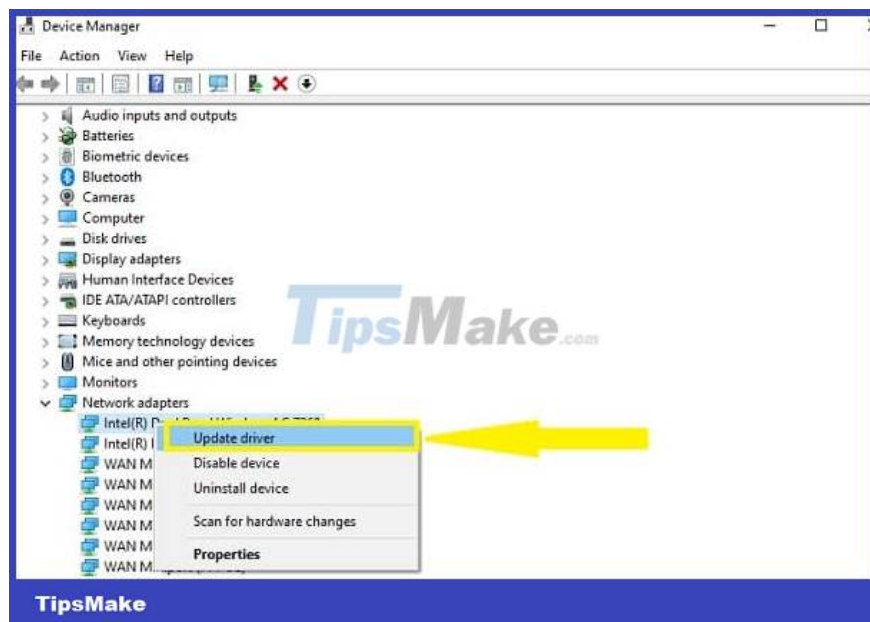


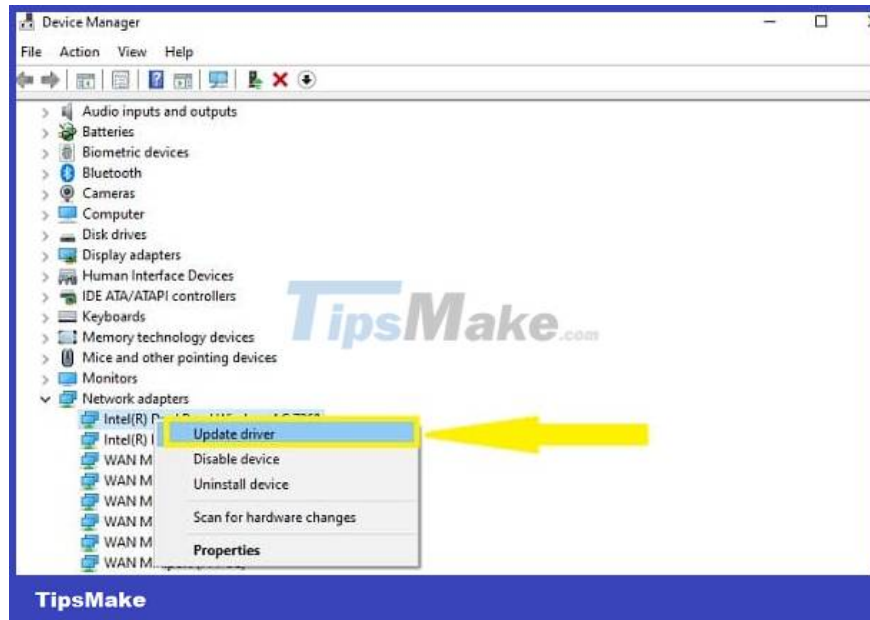
1. When the window appears, click Configure.
2. In the new window, click on the Power Management tab > Uncheck the box Allow the computer to turn off this device to save power and then click OK.



## Update the latest Wifi driver

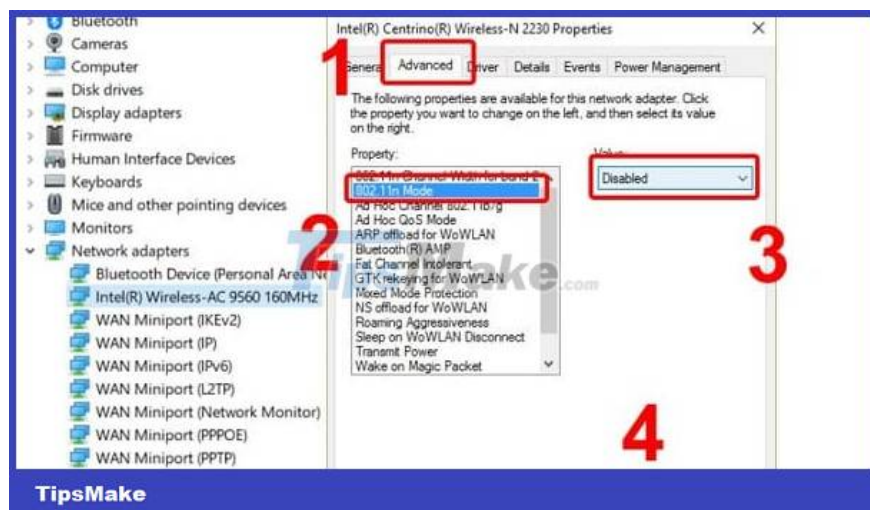
1. Step 1: Press the Windows + R key combination > Type devmgmt.msc and then click OK.
2. Step 2: Double click to expand Network adapters > Right click on the Adapter in use > Select Update driver.
3. Step 3: Click Search automatically for updated driver software and wait for this automatic process to complete.



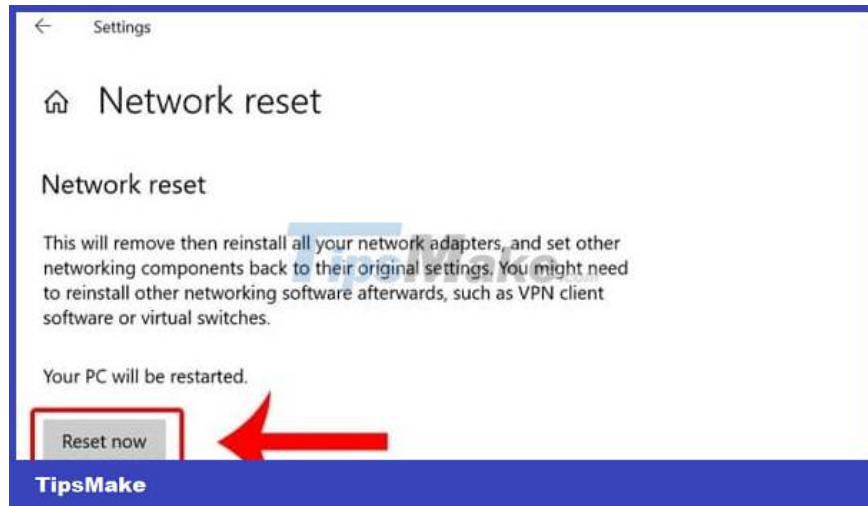


## Turn off IEEE 802.1X authentication

1. Continue pressing Windows + R to open the Run dialog box, then type devmgmt.msc and click OK.
2. Double click on Network adapters > Right click on the Adapter you are using and select Properties.
3. Click on the Advanced tab > Select the 802.11n Mode line > Select Disabled > Click OK.

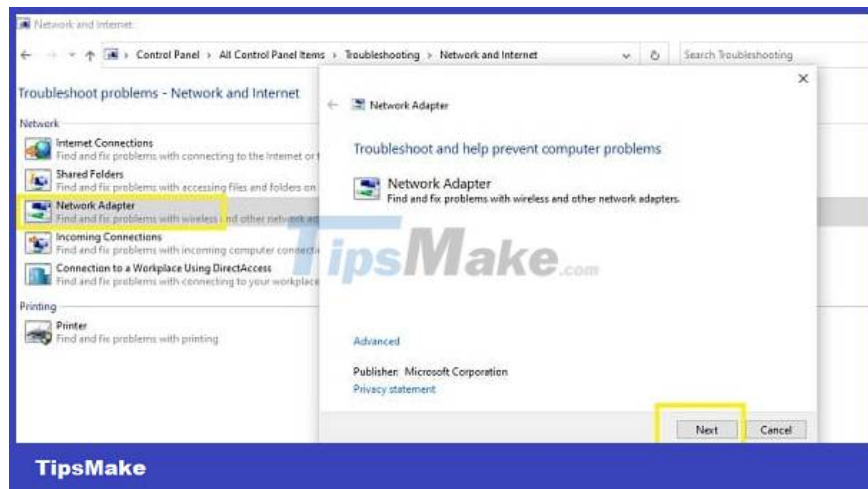






## Network Troubleshooter

1. Step 1: Click the search icon on the Taskbar > Type and open Control Panel.
2. Step 2: Select Troubleshooting.
3. Step 3: Click on Network and Internet.
4. Step 4: Click Network Adapter > Click Next then continue to follow the on-screen instructions to fix it.



Above are some effective ways to fix the error of automatically disconnecting Wifi on Windows 10 laptops. I hope you successfully handle this situation.

You finished reading the article "**Simple way to fix Wifi disconnection error on Windows 10 laptop**" edited by the [TipsMake](#) team. We hope this article has provided you with many useful tech tips and tricks. You can search for similar articles on tips and guides. Thank you for reading and for following us regularly.