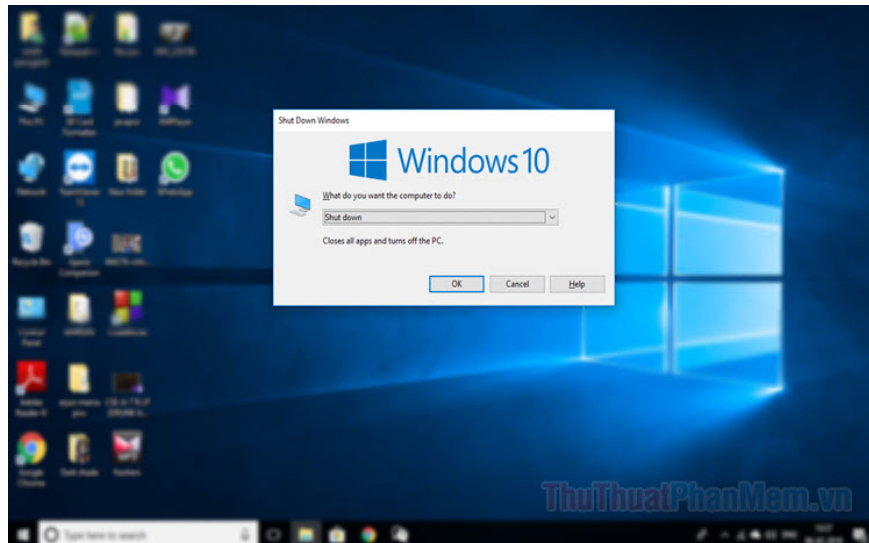


Shortcut Shutdown Win 10 - Turn off Windows 10 with an extremely fast shortcut

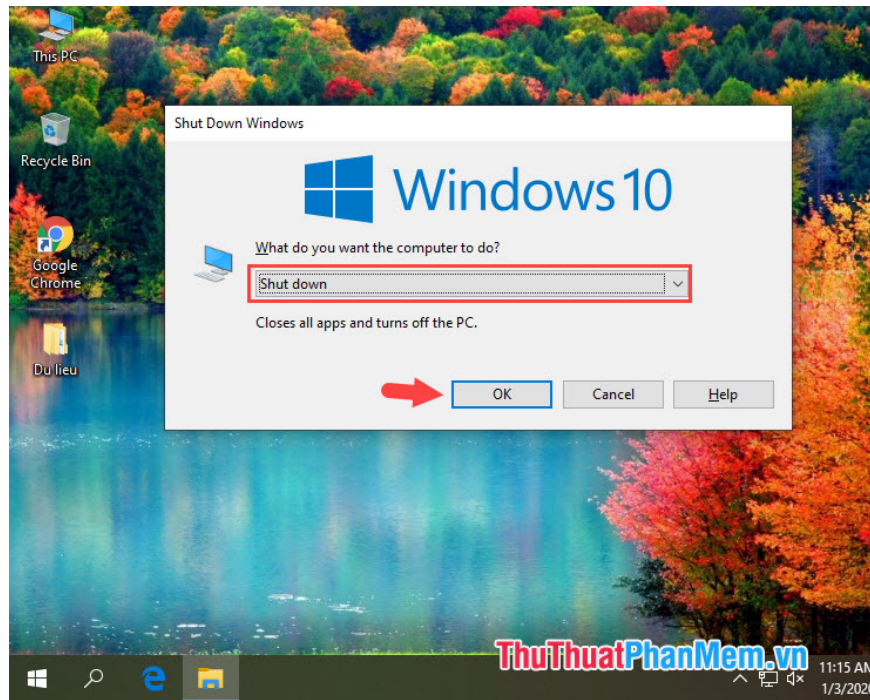
Using keyboard shortcuts in Windows 10 helps us save time and use the computer to look cooler. In her following article, TipsMake.com shares readers about the important shortcut in Windows that any user should know - Shortcut Shutdown (shutdown).

Using keyboard shortcuts in Windows 10 helps us save time and make our computer look "cool". In her following article, TipsMake.com shares readers about the important shortcut in Windows that any user should know - Shortcut Shutdown (shutdown).



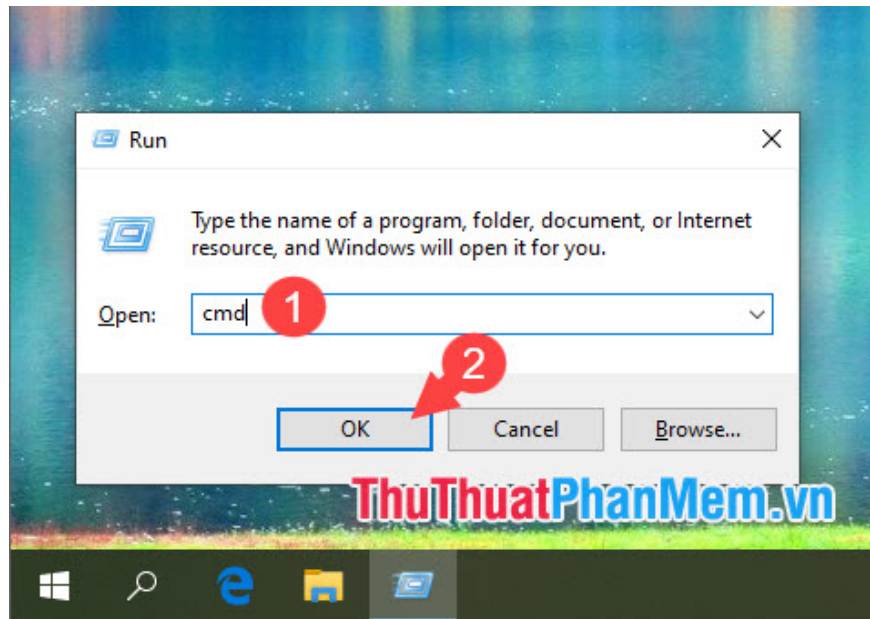
1. Use the key combination **Alt + F4**

Use the key combination **Alt + F4** to quickly open the **Shut Down Windows** dialog box . Then you check the **What do you want the computer to do** dialog box ? Is it true **Shut down** or not and then press **Enter** . If it is not the Shut down line, select it and then press **Enter** .



2. Use the shutdown command in cmd

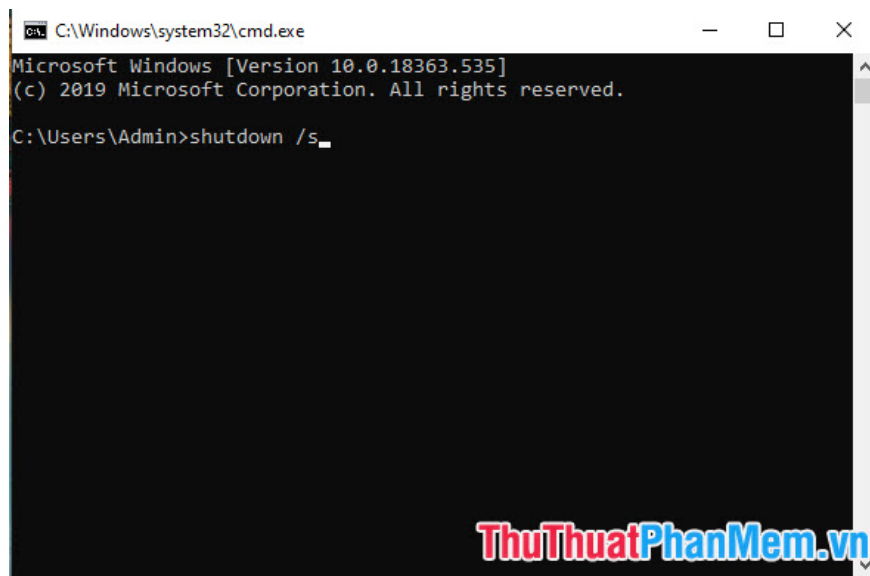
Step 1: You press **Windows + R** key combination to open the **Run** dialog box . Then enter the **cmd** and **Enter** commands .



Step 2: Enter the command **shutdown / s** and press **Enter** to finish. Your computer will turn off automatically within 1 minute.

```
C:\Windows\system32\cmd.exe
Microsoft Windows [Version 10.0.18363.535]
(c) 2019 Microsoft Corporation. All rights reserved.

C:\Users\Admin>shutdown /s_
```

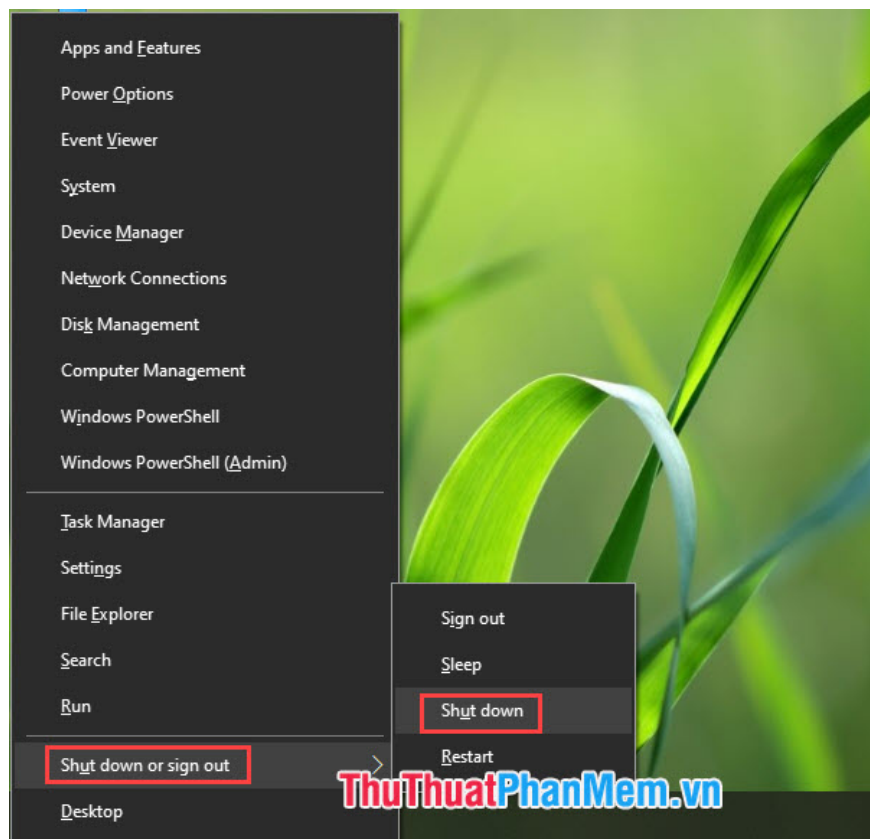
A screenshot of a Windows command prompt window. The title bar shows 'C:\Windows\system32\cmd.exe'. The window content displays the Windows version '10.0.18363.535' and the copyright notice '(c) 2019 Microsoft Corporation. All rights reserved.'. The command prompt shows the user 'Admin' at the 'C:\Users\Admin' directory, having entered the command 'shutdown /s_'. A watermark 'ThuThuatPhanMem.vn' is visible in the bottom right corner.

3. Use the submenu on the Start button

On Windows 10, there is a sub menu that contains the necessary functions on Windows. To enable this submenu, right-click the Start button or press **Windows + X** keys .

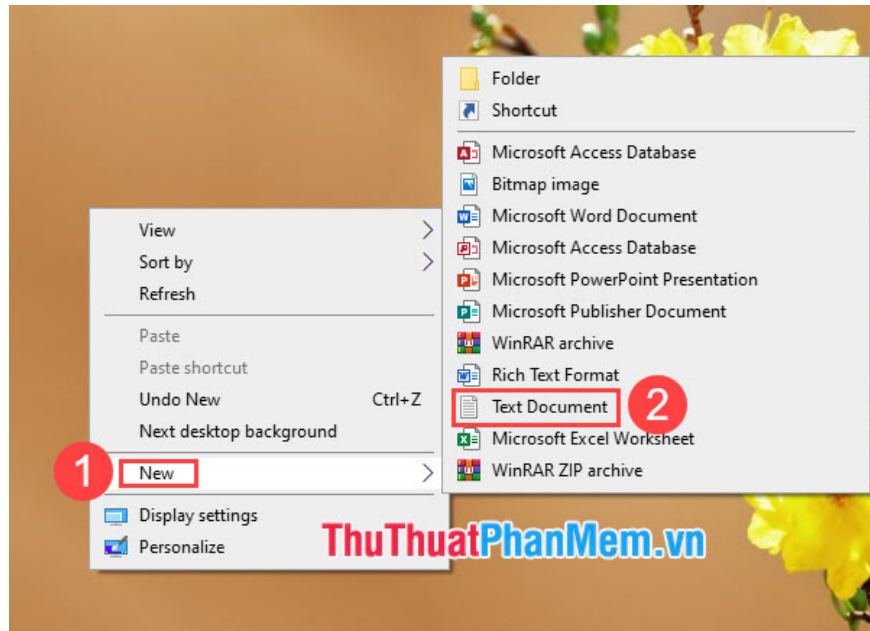
To turn off the computer quickly with a shortcut combination, follow the instructions below:

Press **Windows + X** => press the **U** key on the keyboard twice and press **Enter** is done.



4. Turn off Windows 10 quickly with shortcuts created from the Registry

Step 1: Right-click the screen, select **New => Text Document** .



Step 2: Enter the following code into the **Notepad** file

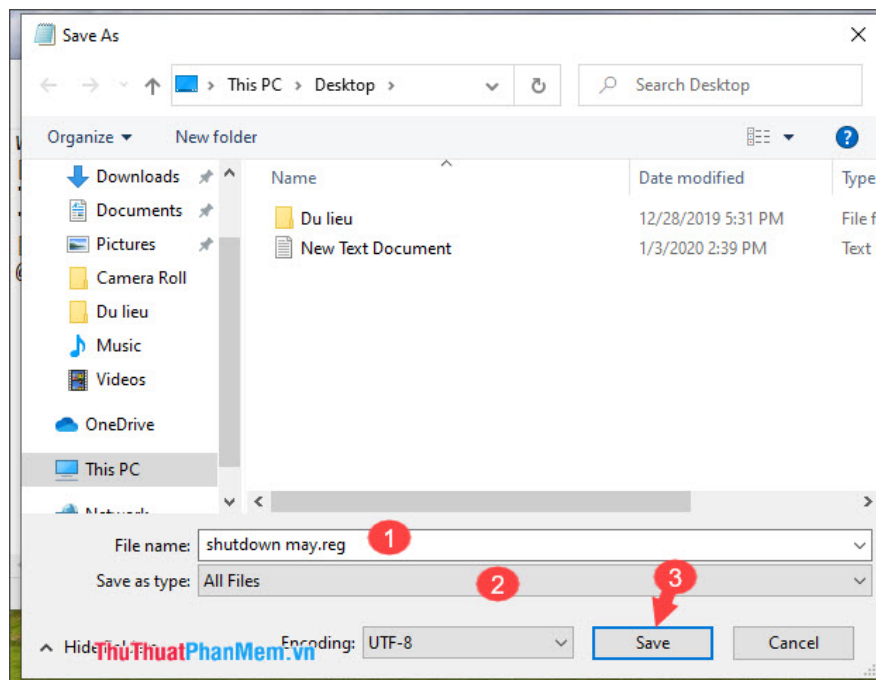
Windows Registry Editor Version 5.00 [HKEY_CLASSES_ROOT\DesktopBackground\Shell\Shutdown Computer]

```
*New Text Document - Notepad
File Edit Format View Help
Windows Registry Editor Version 5.00
[HKEY_CLASSES_ROOT\DesktopBackground\Shell\Shutdown Computer]
"icon"="shell32.dll,-329"
"Position"="Bottom"
[HKEY_CLASSES_ROOT\DesktopBackground\Shell\Shutdown Computer\command]
@="shutdown.exe -s -t 00 -f"
```

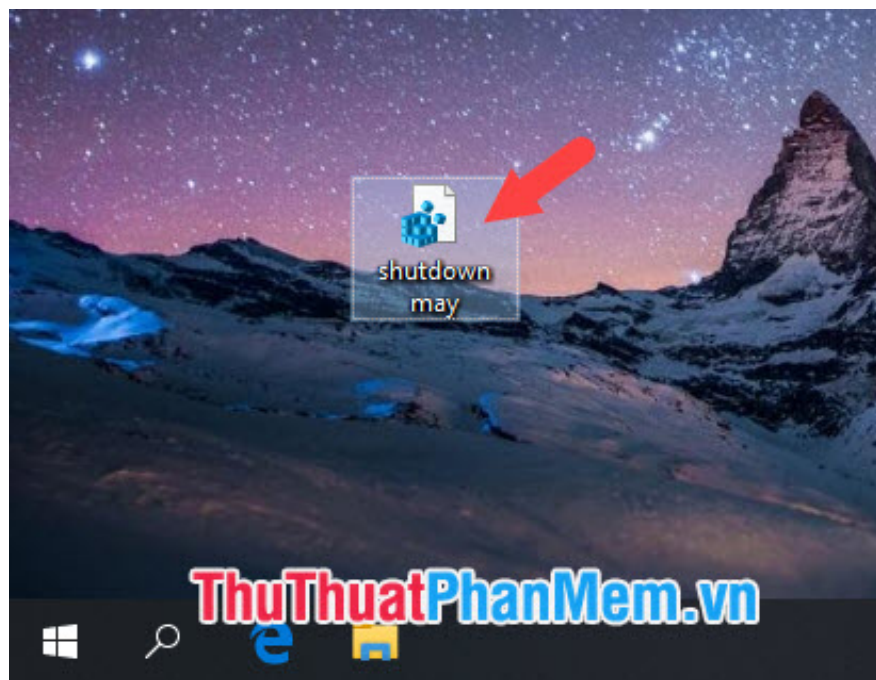
Ln 4, Col 20 100% Windows (CRLF) UTF-8

ThuThuatPhanMem.vn

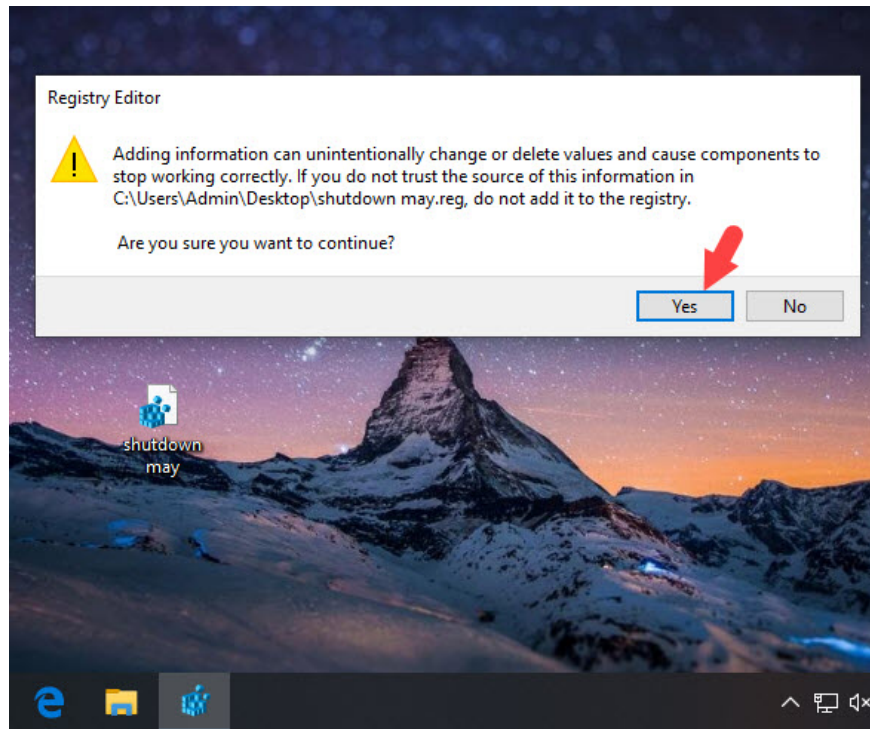
Step 3: Then you save the file with an arbitrary name but must have the extension **.reg** (1) and the **Save as type** section you must leave **All Files** (2) . Then you click **Save** (3) is done.



Step 4: Next, run the **.reg** file you just created in the previous step.



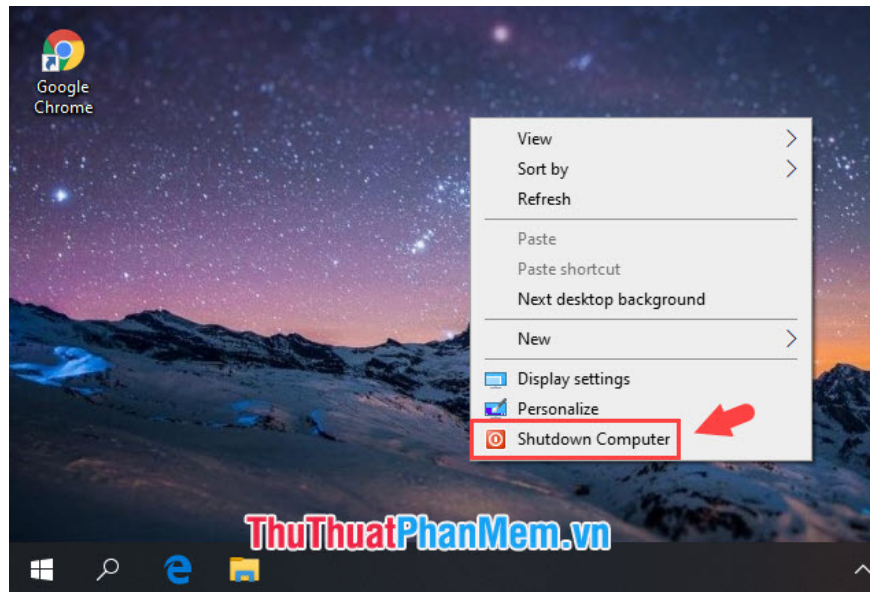
If a message appears, click **Yes** and you're done.



Step 5: To turn off the computer quickly, right-click on the screen and select **Shutdown Computer** to finish. If you want to use keyboard shortcuts, press the **Options** key next to the Windows key on the right. You can visualize the key position as shown below.

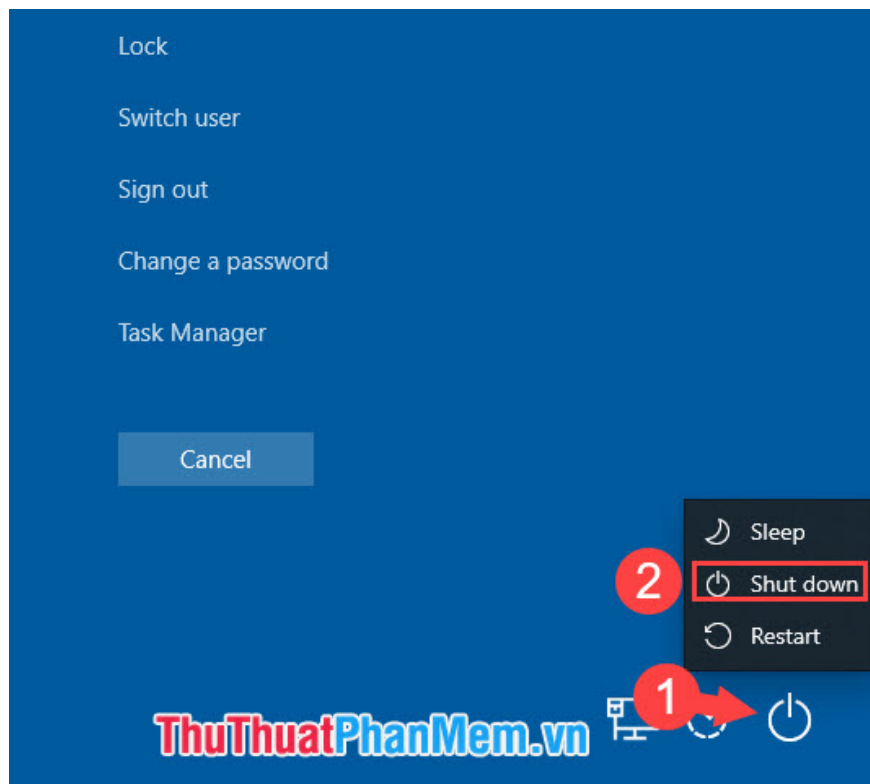


After pressing the **Options** key , press the up arrow key ? and press the **Enter** key to finish.



5. Use the combination of Ctrl + Alt + Del

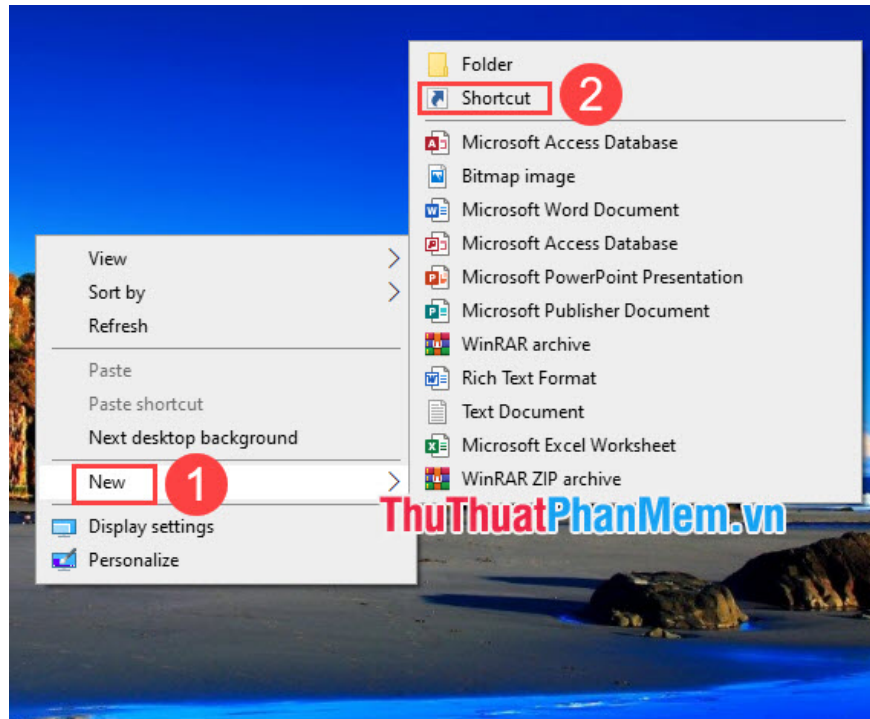
After using **Ctrl + Alt + Del** , click the Power button icon (1) => **Shut down** (2) .



To cancel the shortcut on the right-click menu, go to the link in the registry and delete the Shutdown registry that you created.

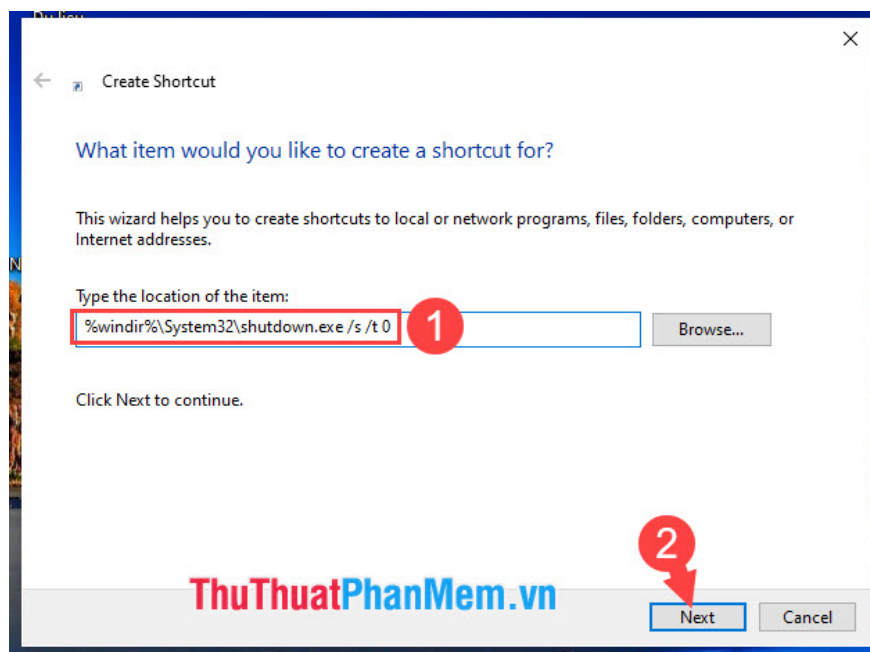
6. Turn off the device with Shortcut

Step 1: Right-click on the Desktop and select **New => Shortcut** .

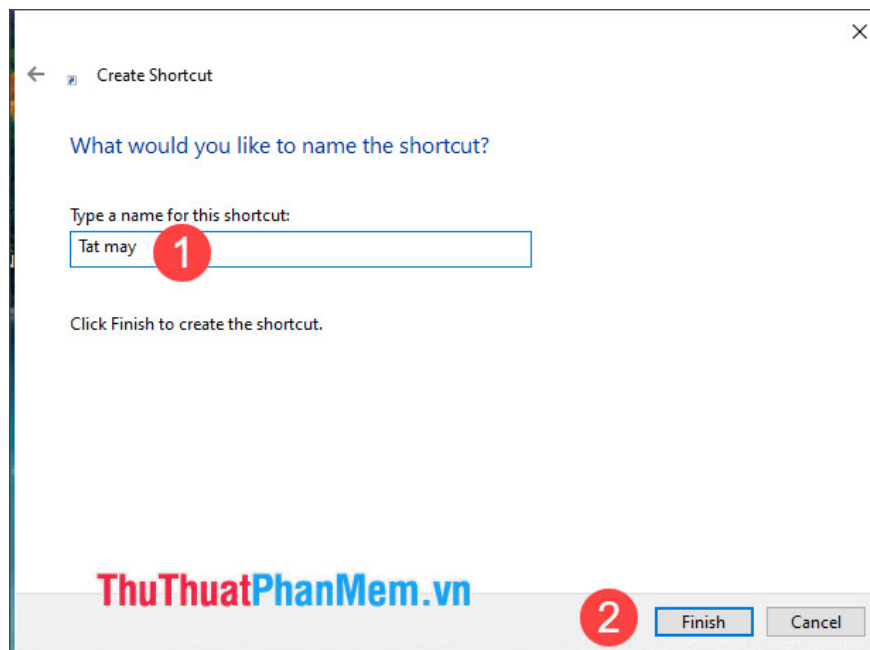


Step 2: Enter the following command (1) and click **Next** (2) .

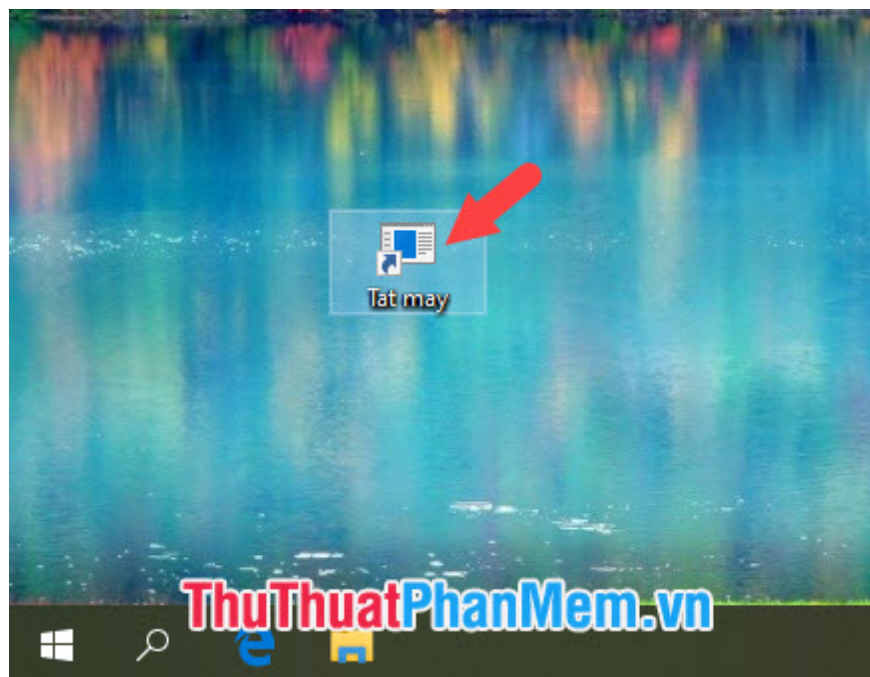
```
%windir%\System32\shutdown.exe /s /t 0
```



Step 3: You name the **Shortcut** (1) and click **Finish** (2) .

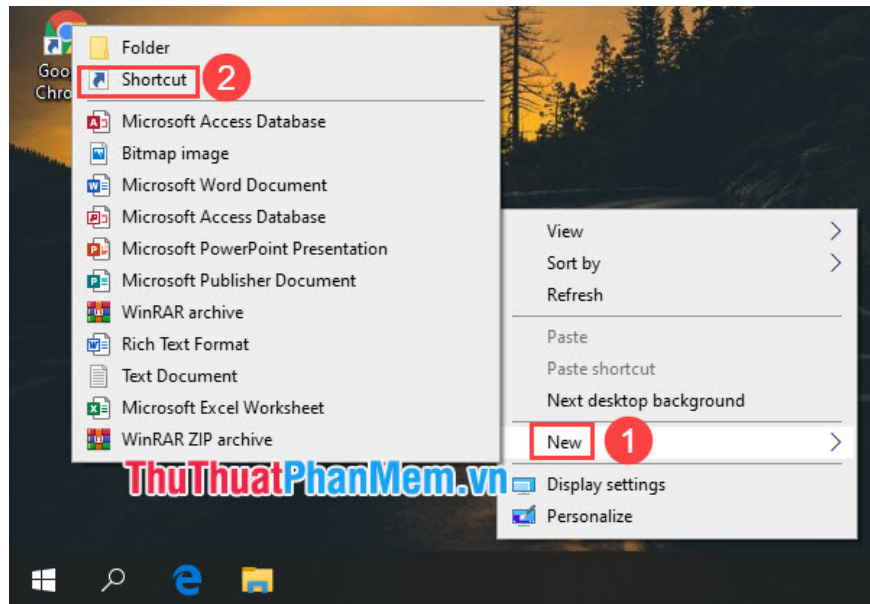


Step 4: To turn off the computer, you click on the **Shortcut** that is done.



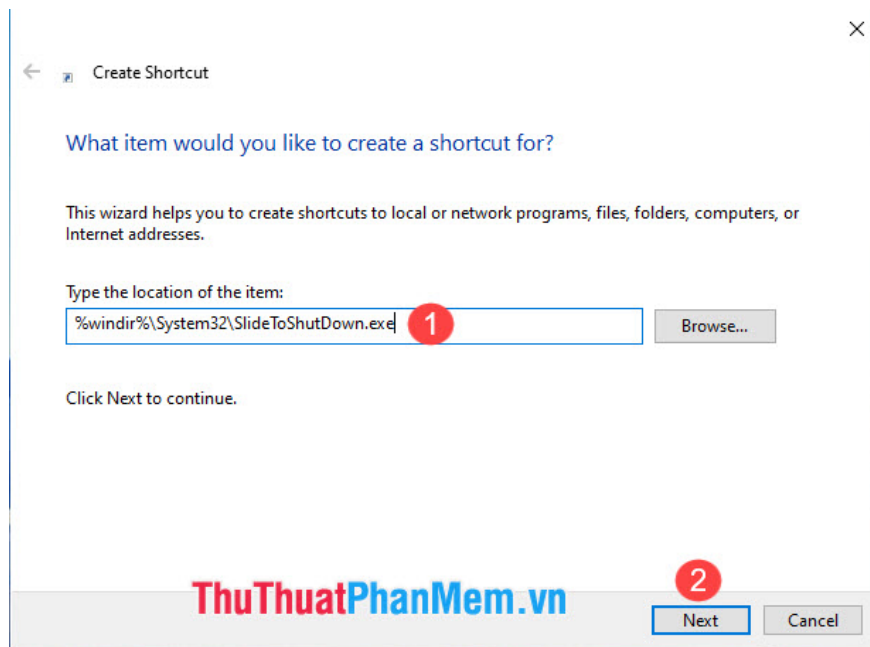
7. Swipe down to shutdown

Step 1: Right-click the **Desktop** and select **New => Shortcut** .



Step 2: Enter the following command and click **Next** .

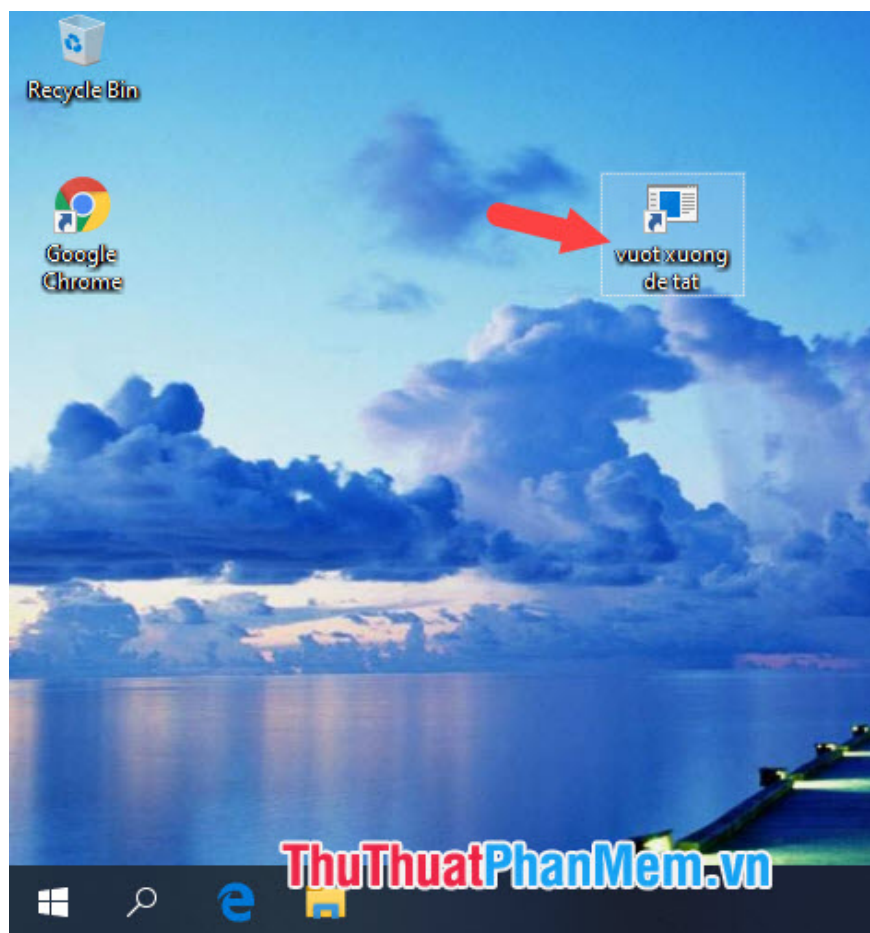
`%windir%\System32\SlideToShutDown.exe`



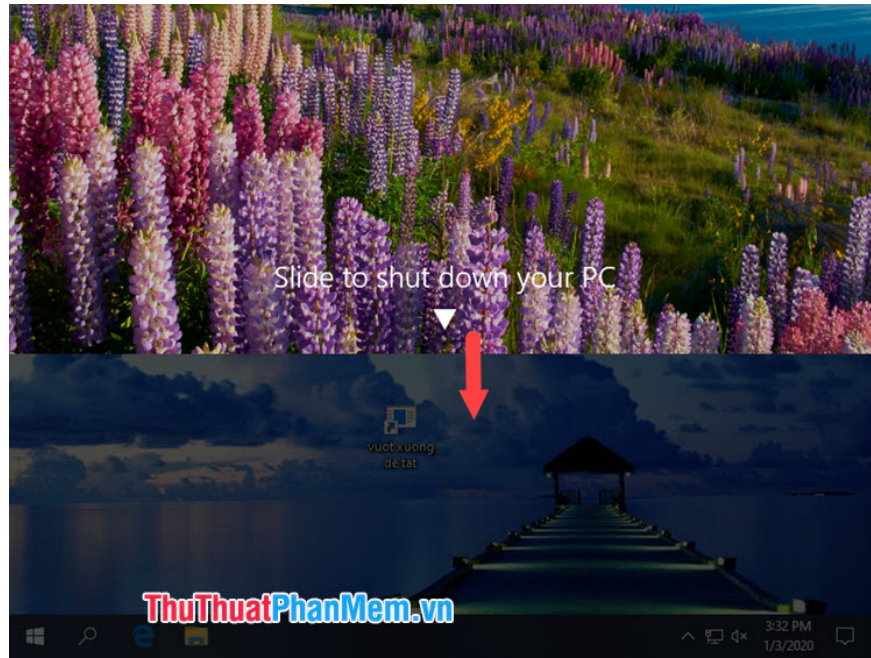
Step 3: Give your arbitrary name for **Shortcut** and click **Finish** .



Step 4: To turn off the computer, click on the shortcut you just created.

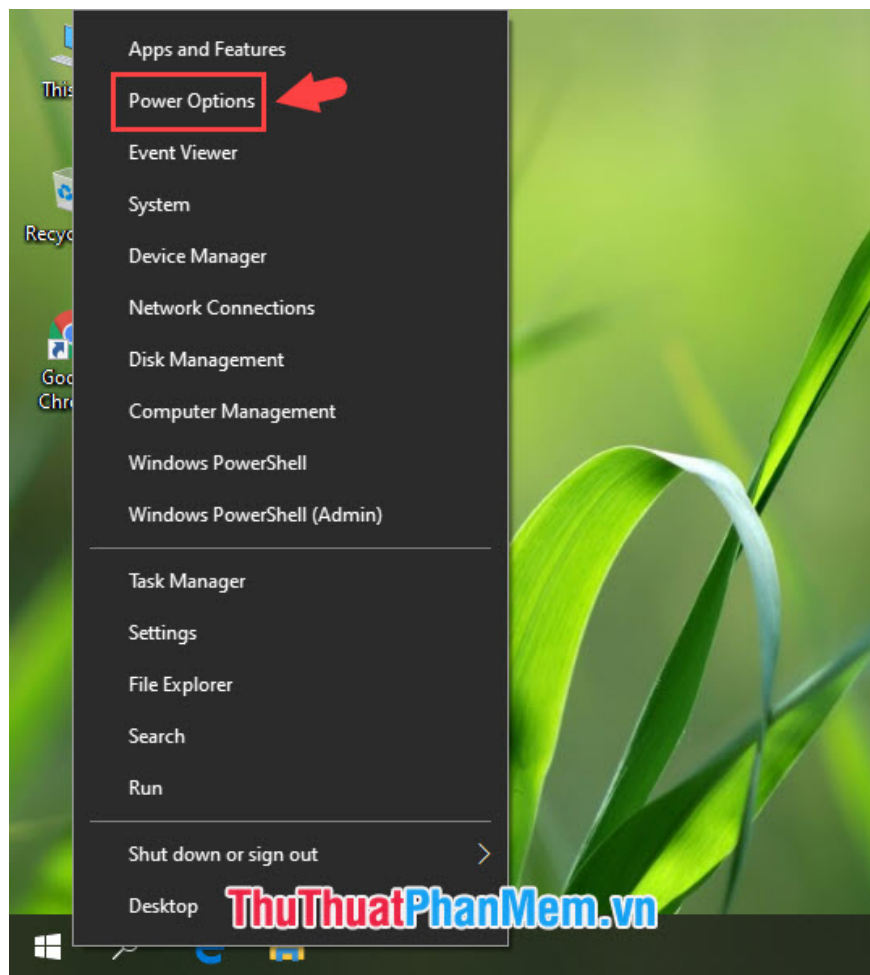


Then use the mouse to drag from **Slide to shut down** down to be okay.

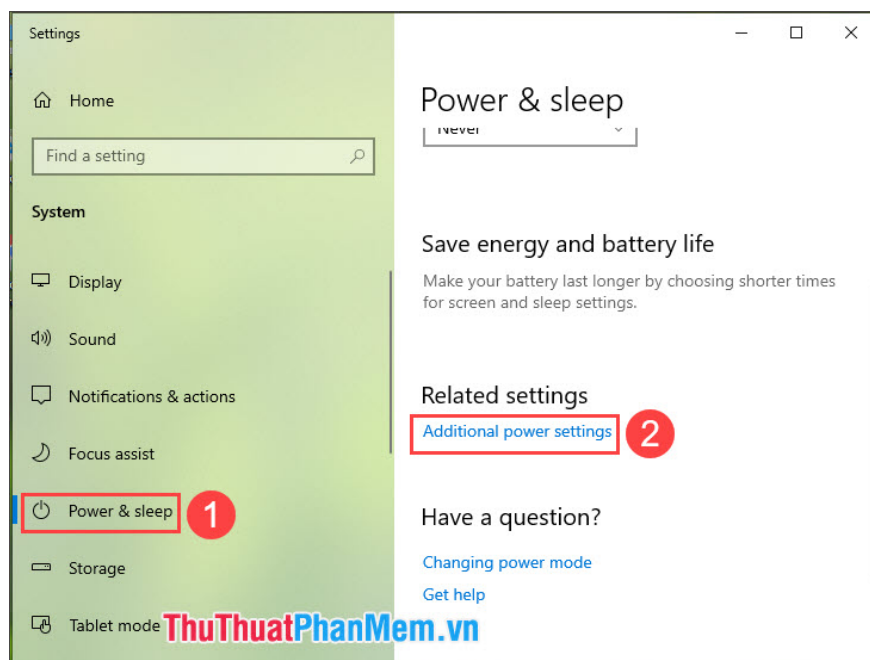


8. Set up shutdown with physical power key on computer.

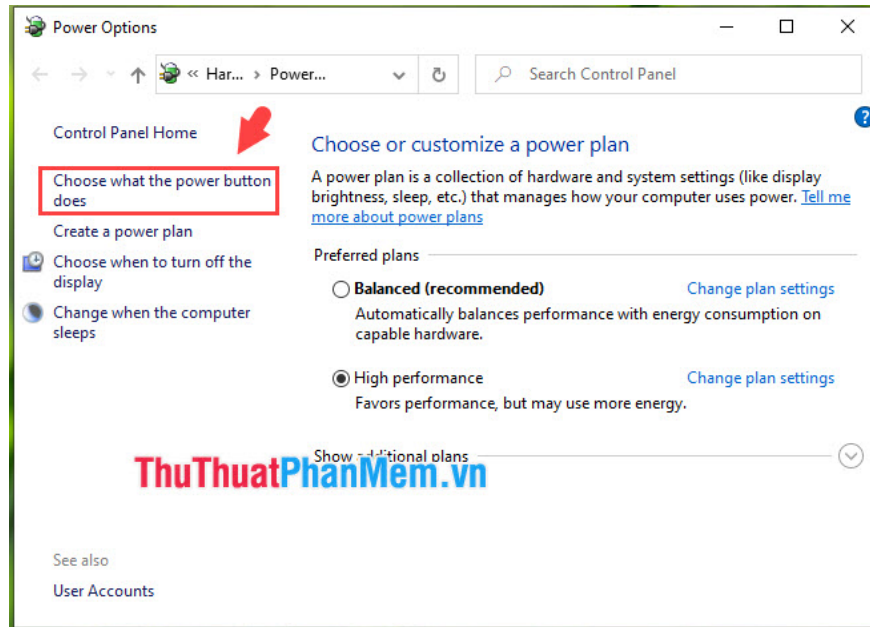
Step 1: Right-click the Start menu button on the desktop or press **Windows key + X** and select **Power Options** .



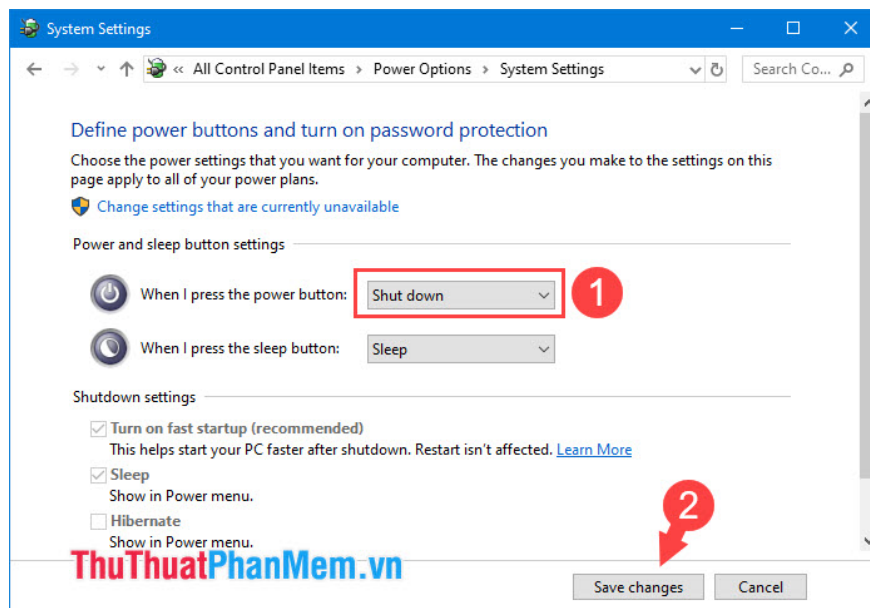
Step 2: Choose **Power & sleep** => **Additional power settings**.



Step 3: Select **Choose what the power buttons do** .



Step 4: Set the **When I press the power button** to **Shut down** and click **Save changes** to save. So every time you press the power button while the computer is running, the computer will automatically **Shut down** .



With the tips shared in the article, hope the article gives you a new interesting experience than the way of Shut down a traditional computer on Windows 10. I wish you success!

You finished reading the article "**Shortcut Shutdown Win 10 - Turn off Windows 10 with an extremely fast shortcut**" edited by the [TipsMake](#) team. We hope this article has provided you with many useful tech tips and tricks. You can search for similar articles on tips and guides. Thank you for reading and for following us regularly.