

# Share files on Windows with Android device

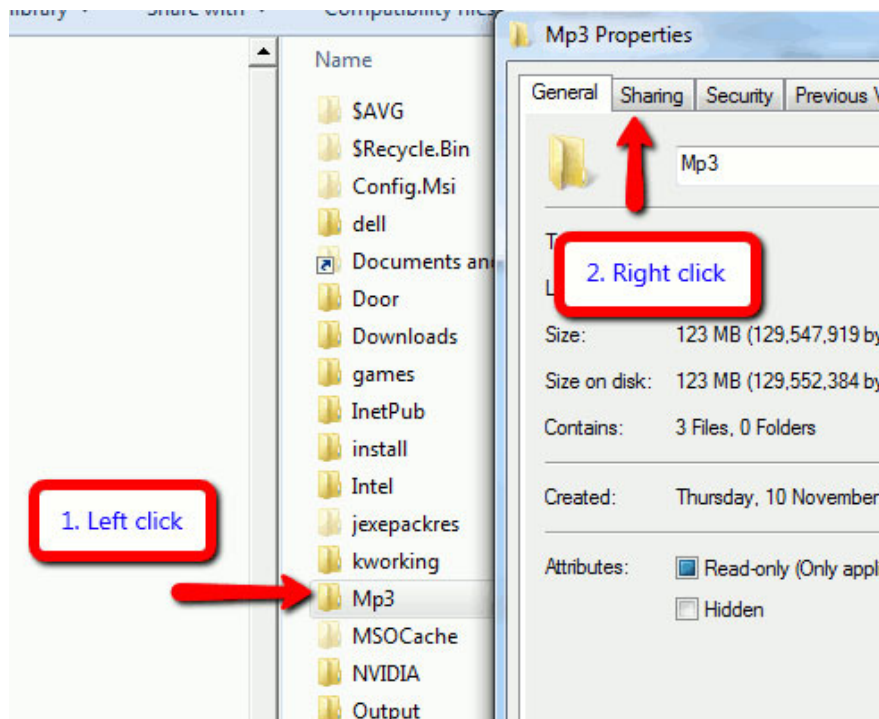
The article will guide users how to access shared folders on Windows easily via Android device. Users can listen to music, stream a video or copy a file from shared folders in just a few simple steps.

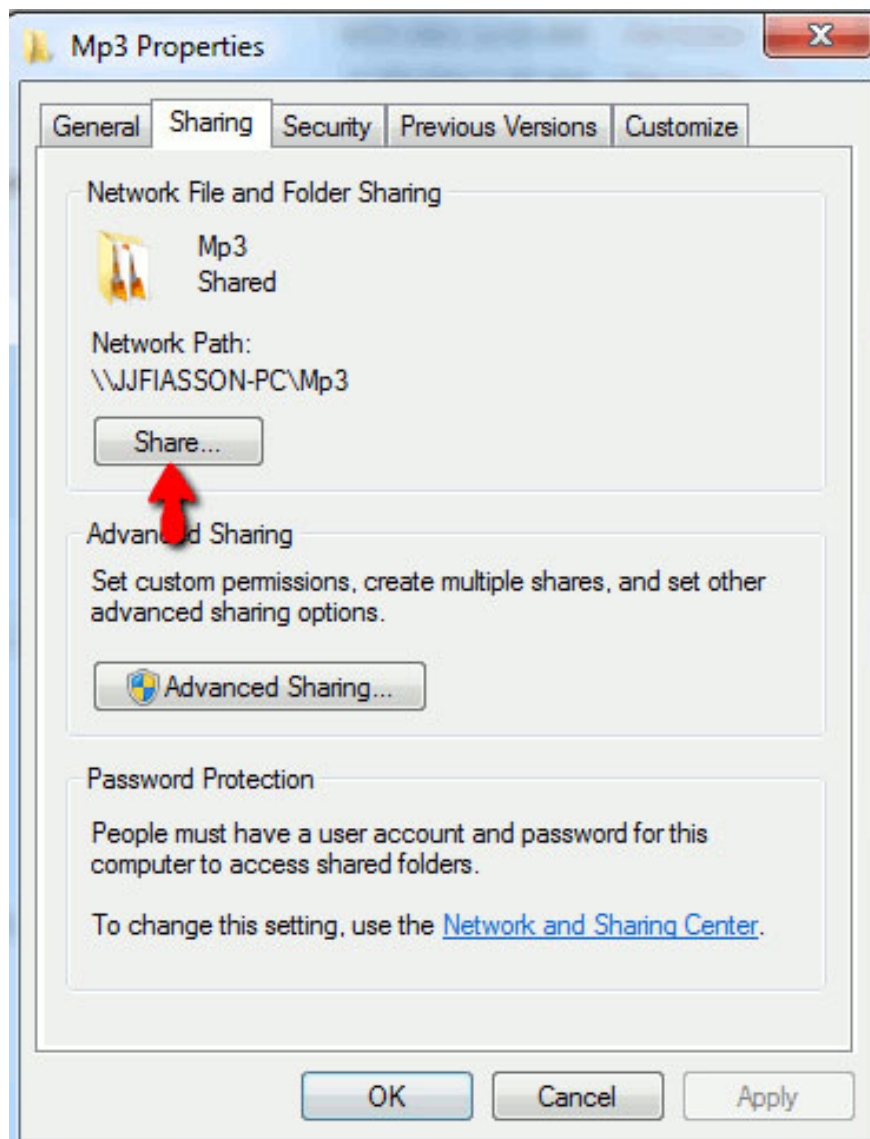
**TipsMake.com - The article will guide users how to access shared folders on Windows easily via Android device.** Users can listen to music, stream a video or copy a file from shared folders in just a few simple steps. This will not only save storage space for Android devices but also allow you to be able to access the desired file or folder remotely.

## File sharing configuration on Windows 7

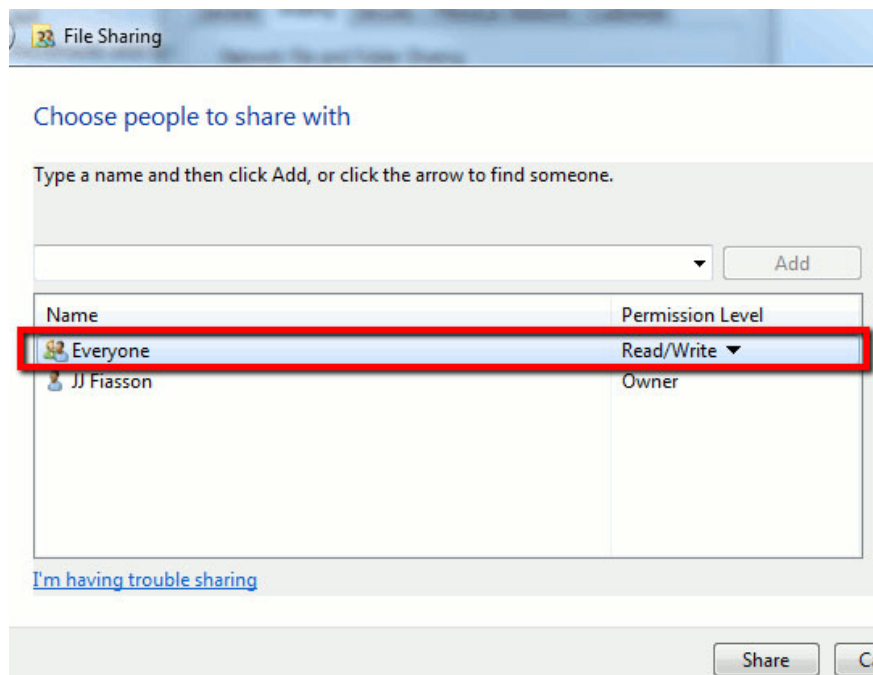
First of all, we need to make sure that the operating system is configured to share files.

Open Windows Explorer and navigate to the folder you want to share. Right-click the folder and select **Properties** . In User Properties, select the **Sharing** tab and click **Share** .





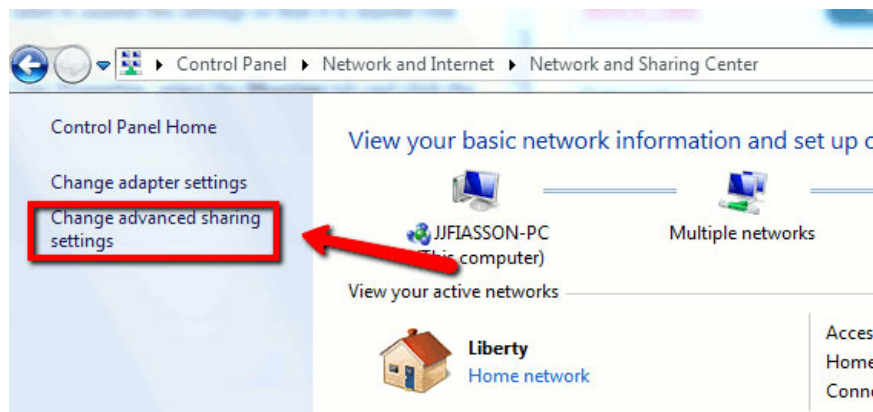
The File Sharing page requires users to select users or groups that want to share the same folder. The simplest solution is to type **Everyone** in the text box and select **Add**. Remember that this will allow anyone in the network to access that shared folder, so if you want to be more secure, users can instead enter your username (a password is required).



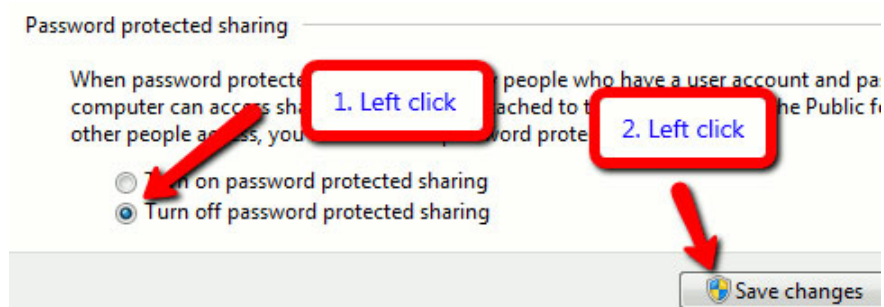
Note that the default settings for folder sharing are only **Read** read permissions. If you want to copy the file from the Android device to the shared folder, the user must upload the permission to **Read / Write** .

Click **Share** to continue.

After that, we need to change the shared permissions anonymously. Go to Network and Sharing Center by clicking **Start> Control> Panel> Network Internet> Network and Sharing Center** . Select **Change advanced sharing settings** on the left side of the page.



The Password protected sharing page appears and the Turn on password option protected sharing is the default. If you have chosen to share the folder with everyone, you should turn it off. However, if you are worried about safety and just want to share files with certain usernames, you can leave the setting turned on. However, make sure to set a password for your username or you won't be able to create a connection.



## Check IP address

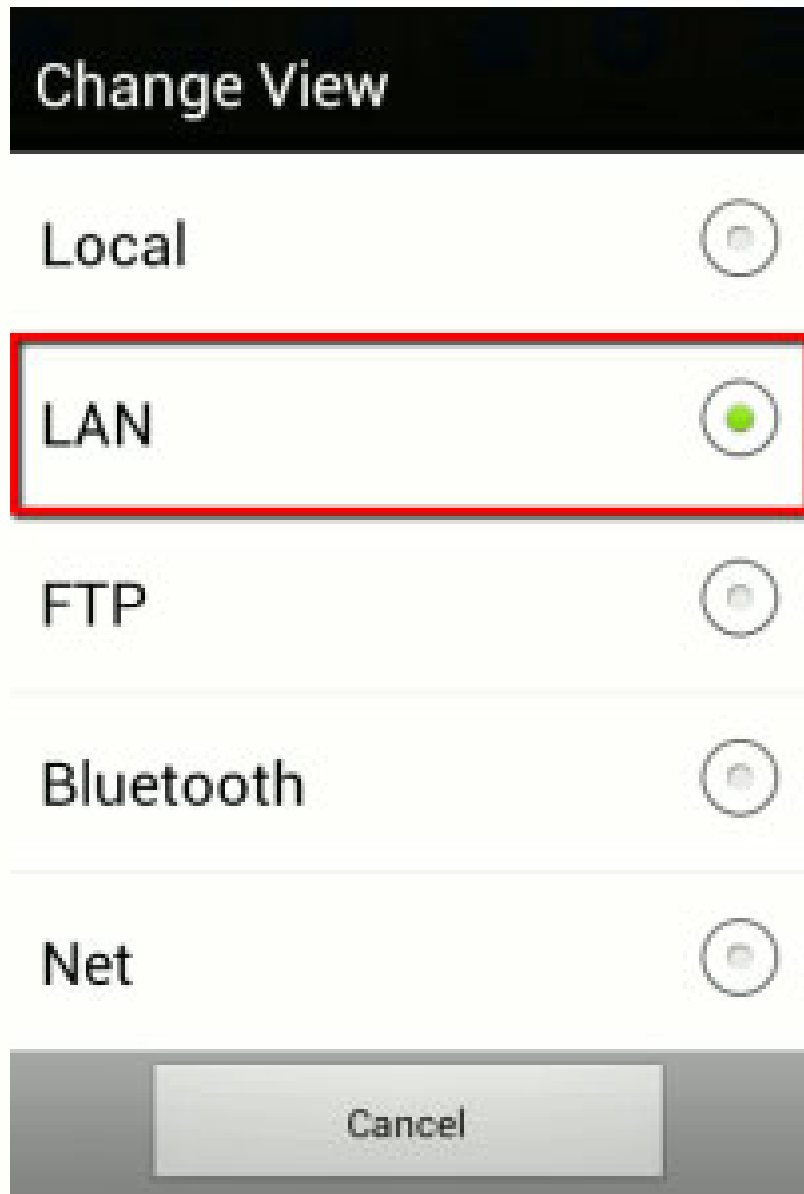
In the next section, we need to know the IP address of the machine. Open a command **prompt** and type **ipconfig**. The IP address will be displayed. Please remember this address.

## Access shared folders with Android device

There are several applications on the market that you can configure to access shared folders on Android devices. Here, we will use ES File Explorer, a free application compatible with Android 1.6 installation devices.

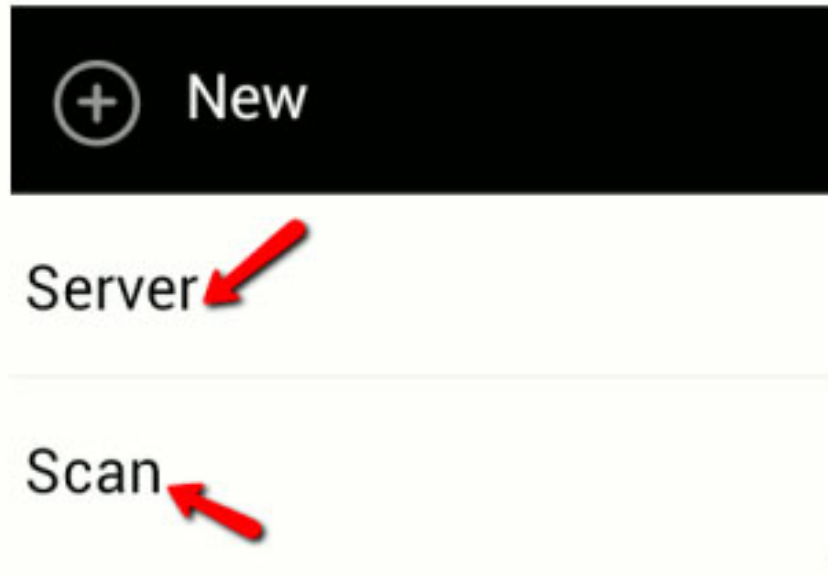
To configure ES File Explorer, perform the following steps:

1. Install ES File Explorer. Run the application after installation is complete.
2. The home screen will display all files and folders on the SD memory card. At the top left, users will see a small Local drop-down box. Click here and a dialog box appears. Choose the **LAN** option.



Note that Android devices and computers must be connected to the same network to be able to access the PC, ie we must turn on WiFi on the Android device.

Now, after in the LAN, select **New** from the toolbar at the top of the screen and two options will appear: Scan and Server.



### **Scan options:**

Select Scan to search for PCs on the network that have shared folders. At this point, the IP address is very important. After seeing your computer appear, users can stop the scan by clicking on the screen. Select your computer and if you choose to turn off the password protection, the device will automatically connect to the PC. If not, a screen will appear as follows:



In this case, the user will need to enter the username and password of the shared account folder on the PC.

### **Server options:**

Select Server if you want to manually enter the machine IP address.

New / Edit page Samba Server will appear. If you have chosen to enable password protection, enter the machine's IP address, Windows login username and password and enter the Display name display name. Don't tick the anonymous Anonymous option.

## New/Edit Samba Server

Domain:

Server:

Example: 192.168.1.100/My Documents

Username:

Password:

**Anonymous**

Display as:

If you have disabled password protection, enter the IP address, check **Anonymous** and enter a display name.

## New/Edit Samba Server

Domain:

Server:

Example: 192.168.1.100/My Documents

Username:

Password:

Anonymous

Display as:

Once completed, shared files or folders will be listed in the LAN screen. That's all the steps to do. Good luck!

You finished reading the article "**Share files on Windows with Android device**" edited by the [TipsMake](#) team. We hope this article has provided you with many useful tech tips and tricks. You can search for similar articles on tips and guides. Thank you for reading and for following us regularly.