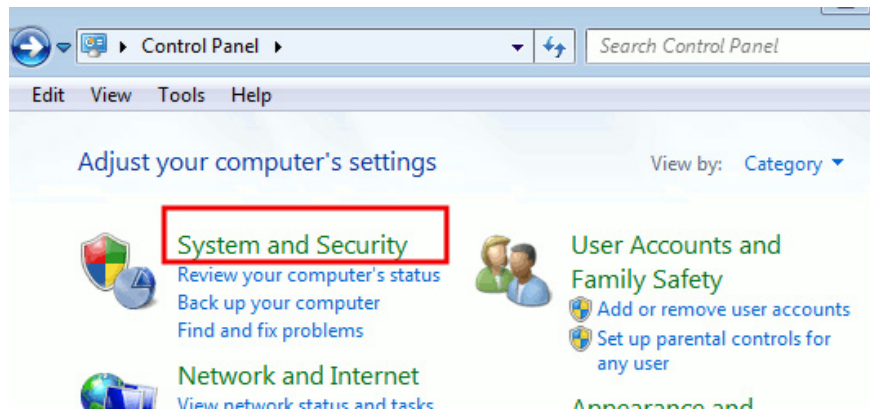


Setting up and connecting Remote Desktop in Windows 7

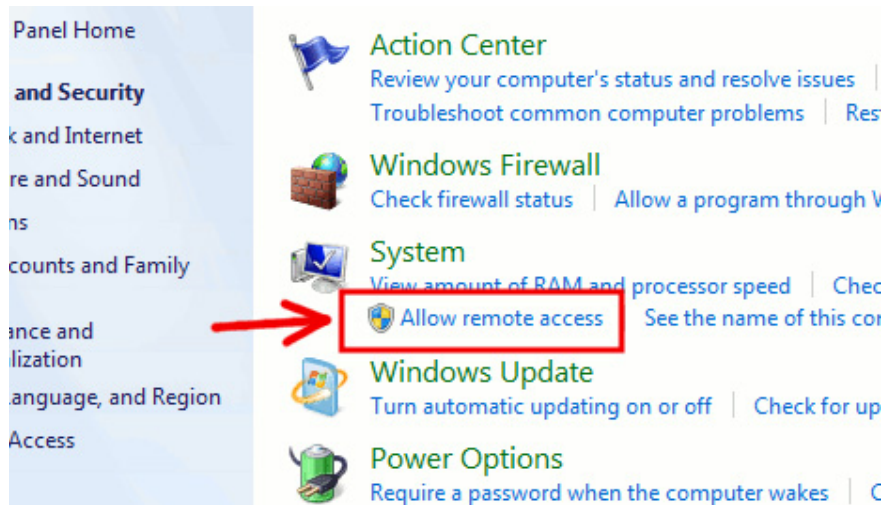
Microsoft's Remote Desktop Manager feature in Windows 7 can easily allow users to connect from one computer to another in the same network, and share documents, documents ... In the article below, We will show you a few basic steps in the process of setting up and using this feature in Windows 7.

Microsoft's Remote Desktop Manager feature in Windows 7 can easily allow users to connect from one computer to another in the same network, and share documents, documents . In the article below, We will show you a few basic steps in the process of setting up and using this feature in Windows 7.

First, select **Start> Control Panel> User Accounts> System & Security**:

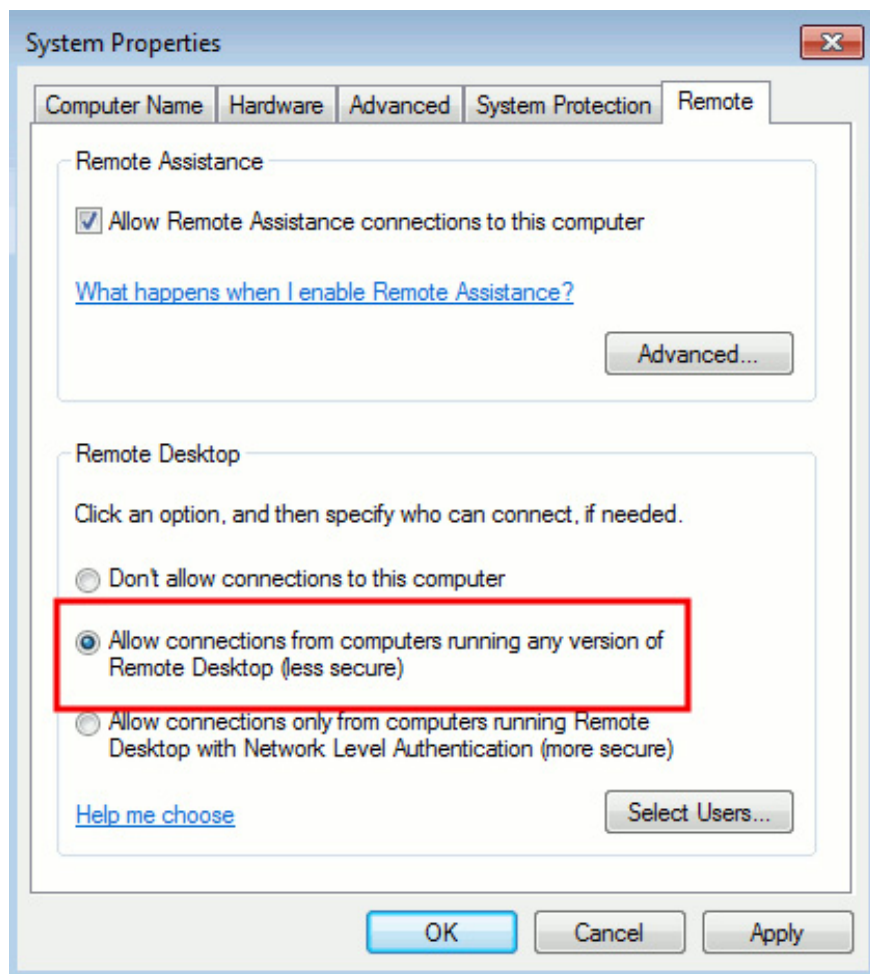


In the **System** section, select the **Allow Remote Access** tab as shown below:

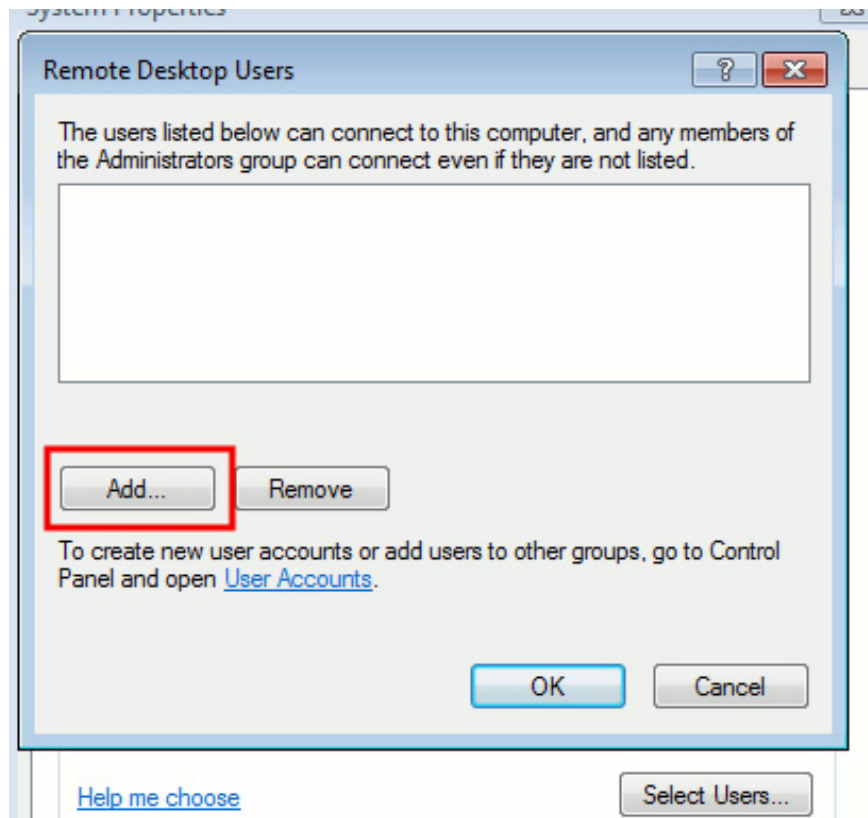


Once we have enabled **Remote Desktop** feature, we will have 2 options:

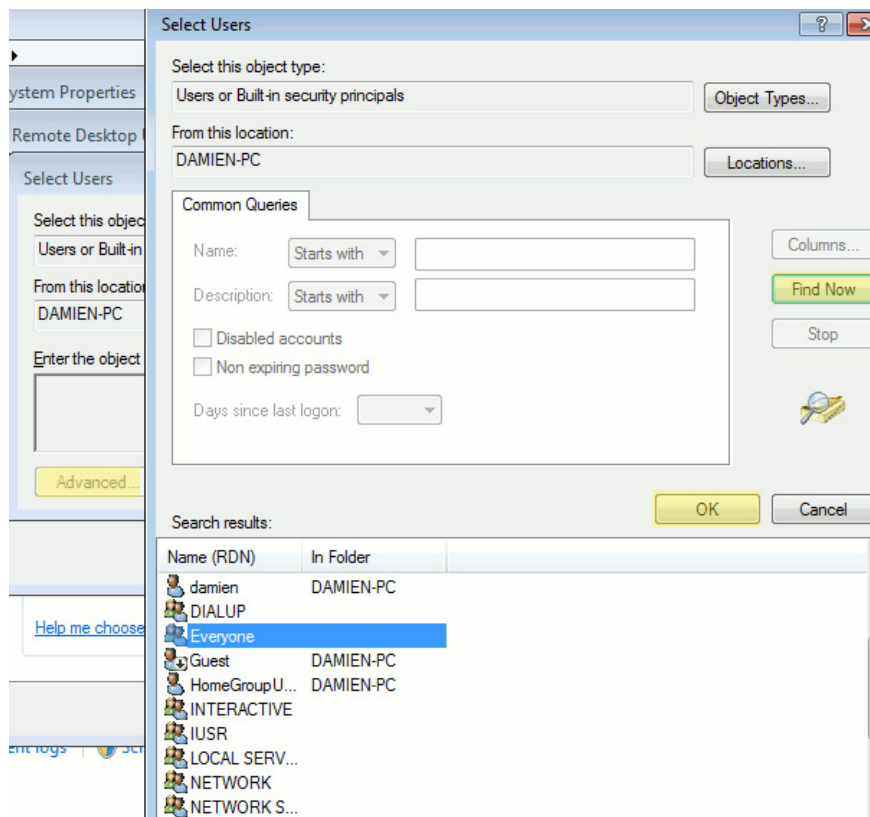
- Choose **Allow connections from computers running the version of Remote Desktop** and click **Apply** , suitable for the case where you have multiple **Remote Desktop** enabled.
- If only one **Remote Desktop** version is active, select **Allow connections only from computers running Remote Desktop with Network Level Authentication** .



Then click **Select Users** and **Add** :

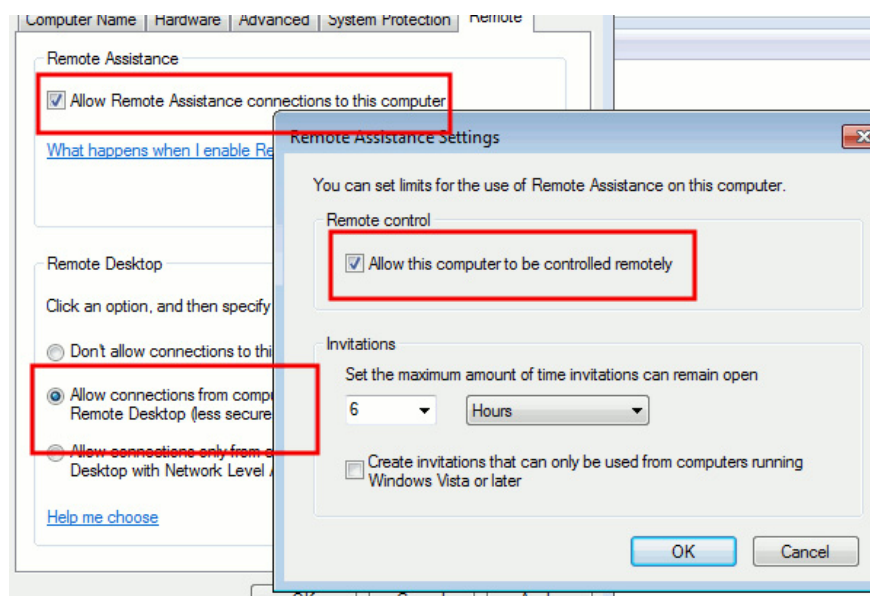


Next, select the user account that is allowed to connect to the **Remote Manager** by clicking **Advanced> Find Now**, the drop down list will be displayed for selection, including user accounts, computer names or domains. After selecting, click OK:



Click OK 3 times to apply the change and exit all windows, then move on to the next step. If you want to remove **Remote Desktop** access from certain accounts, do the same thing as above, but this time we click **Remove** .

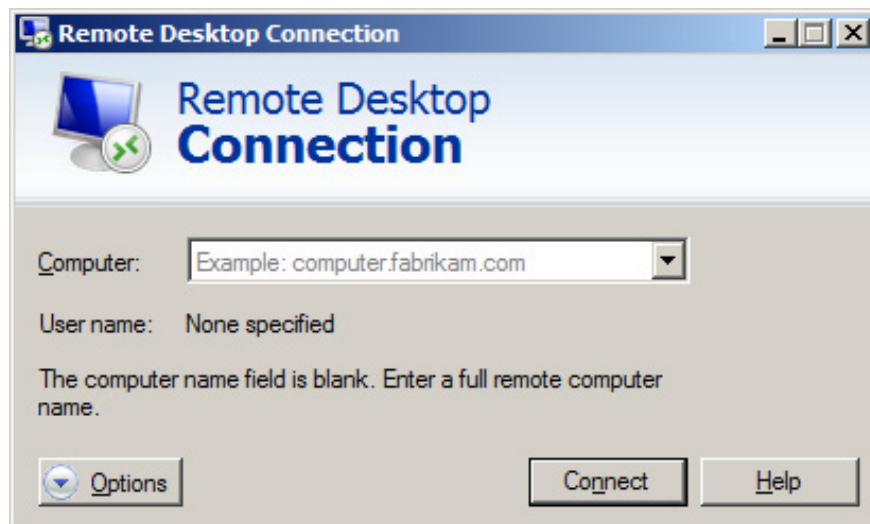
For other computers, when they want to connect, they must have permission to access. And to set it up, open **Start> Control Panel> System> Advanced System Settings** , select the **Remote** tab and check the **Allow Remote Assistance connections to this computer box**. At the bottom of the window, select **Allow connections from computers running any version of Remote Desktop** and finally, click the **Advance** button to open another window, where we will select **Allow this computer to be controlled** as shown below and click OK :



However, before you can connect to the Remote Computer, you need to configure and change the technical information of the Router and the Firewall system in the operating system:

- Connecting via router to a single computer, you need to change Port Forwarding function to allow connection ports on 3389, then enter the IP address provided by ISP.
- Connect to many different computers via the router, for each computer you want to connect to, you need to set up different Port numbers to avoid conflicts.
- If there is a firewall, we will have to change it to allow the signal to connect to the port that is being opened on the router.

When you have completed the above steps, the rest of us are just using the **Windows Remote Desktop Connection** utility (open **Start** and type remote to search), the window as shown below will show:



Enter the computer name, IP address or domain to connect to, click **Connect** and enter the required information at the next display window. Good luck!

You finished reading the article "**Setting up and connecting Remote Desktop in Windows 7**" edited by the [TipsMake](#) team. We hope this article has provided you with many useful tech tips and tricks. You can search for similar articles on tips and guides. Thank you for reading and for following us regularly.