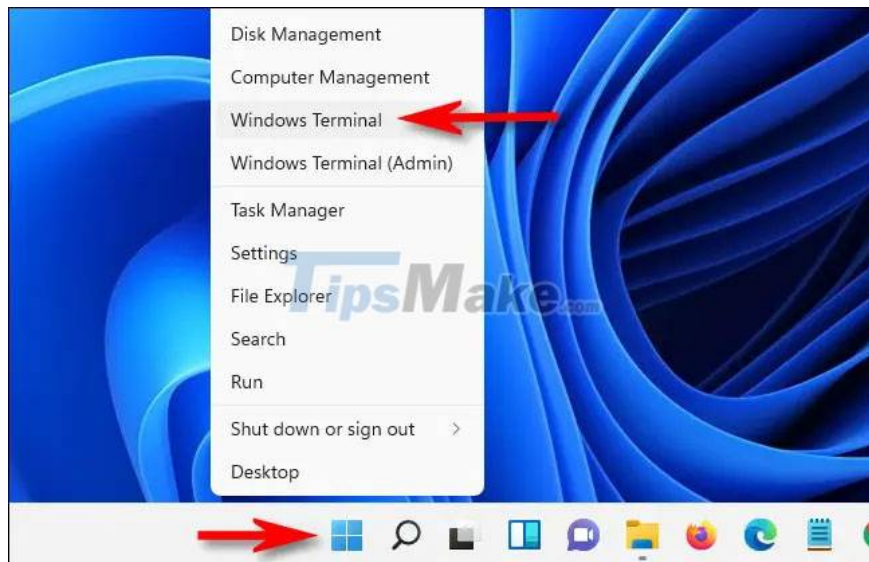


Set up Windows Terminal to always open with Command Prompt on Windows 11

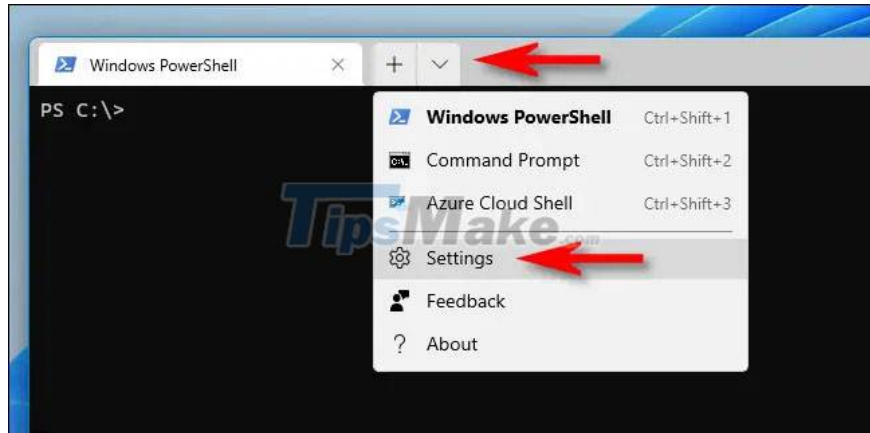
Windows Terminal is one of the most useful applications in Windows 11. It allows you to access different shell command environments, all in one extremely convenient and easy to operate.

Once launched, Windows Terminal opens PowerShell as a shell environment by default. However, if you prefer using Command Prompt, it is also easy to set up Windows Terminal to always open with Command Prompt on Windows 11. Here's how.

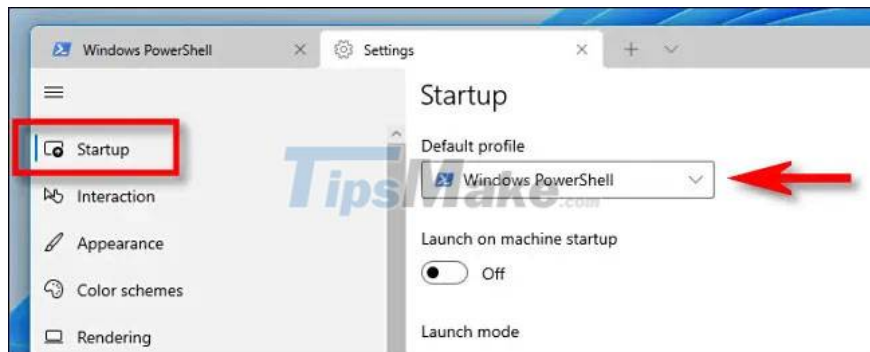
First, launch Windows Terminal by right-clicking the Start button on the taskbar, and choosing ' **Windows Terminal** ' from the pop-up menu.



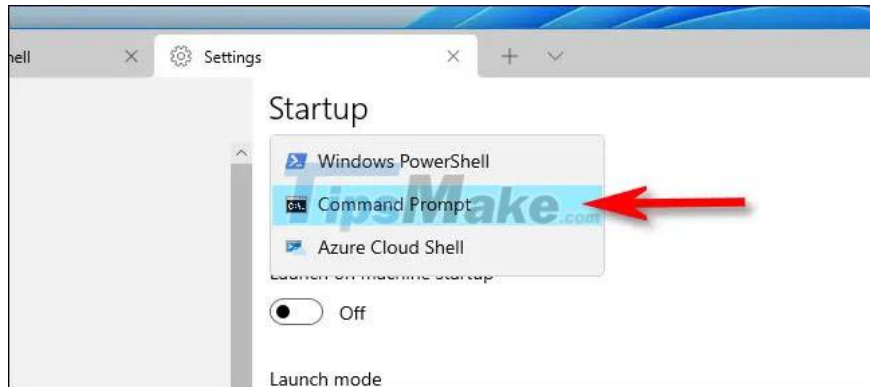
When the Windows Terminal app opens, click the downward caret (located to the right of the plus sign in the tab bar at the top of the screen). Immediately a menu will appear, click ' **Settings** '.



When the Settings tab opens, click on ' **Startup** ' in the list on the left. On the corresponding Startup settings page that appears on the right, click on the drop-down menu labeled ' **Default Profile** '.



In the list of available options, click ' **Command Prompt** '.



Now click the ' **Save** ' button in the bottom right corner of the window to save the changes.



Then close the Settings tab everything is done. The next time you open Windows Terminal or create a new terminal tab by clicking the plus button (' + '), the Command Prompt environment will be opened by default. Hope you are succesful.

You finished reading the article "**Set up Windows Terminal to always open with Command Prompt on Windows 11**" edited by the [TipsMake](#) team. We hope this article has provided you with many useful tech tips and tricks. You can search for similar articles on tips and guides. Thank you for reading and for following us regularly.