

# Set up ProFTPd with TLS on Ubuntu 11.04

FTP is a popular file transfer protocol used today. However, this protocol gradually becomes less secure because the entire password and data of the file is transmitted as clear text.

**TipsMake.com - FTP is a file transfer protocol used quite popular today. However, this protocol gradually becomes less secure because the entire password and data of the file is transmitted as clear text.** So they can be blocked and stolen by the thief. By using TLS, all information will be encrypted, and will make FTP much safer. The following article will guide you to the **ProFTPd** settings with TLS in Ubuntu 11.04 server.

>>>[Learn about OpenSSH in Linux](#)



**Note:** In the following illustration we use hostname *server1.example.com* with IP address *192.168.0.100* . These settings may be different for you, so replace them accordingly.

In addition, since we need to run all the steps in this tutorial with root permissions, we need to prefix all sudo string commands, or we can return to root by typing:

```
sudo su
```

## Install ProFTPd and OpenSSL

OpenSSL is an open source utility needed for TLS, installing ProFTPd and OpenSSL is very simple, just run the following command:

```
apt-get installproftpd openssl
```

You will then receive a question:

Run proftpd:

To increase security you can add the following command line to the file `/etc/proftpd/proftpd.conf` . (See more information here):

```
en /etc/proftpd/proftpd.conf
```

```
[.]  
DefaultRoot ~  
ServerIdent on "FTP Server ready."  
[.]
```

## Create an SSL certificate for TLS

To use TLS we need to create an SSL certificate. We created it in `/etc/proftpd/ssl` , so next is created in the first path:

```
mkdir /etc/proftpd/ssl
```

Finally we can create the SSL certificate as follows:

```
openssl req -new -x509 -days 365 -nodes -out /etc/proftpd/ssl/proftpd.cert.pem -keyout  
/etc/proftpd/ssl/proftpd.key.pem
```

```
Country Name (2 letter code) [AU]:  
State or Province Name (full name) [Some-State]:  
Locality Name (eg, city) []:  
Organization Name (eg, company) [Internet Widgits Pty Ltd]:  
Organizational Unit Name (eg, section) []:  
Common Name (eg, YOUR name) []:  
Email Address []:
```

## Activate TLS in ProFTPd

To enable TLS in *ProFTPd* , open `/etc/proftpd/proftpd.conf` :

```
en /etc/proftpd/proftpd.conf
```

```
and uncomment 'Include /etc/proftpd/tls.conf'
```

```
[.]  
#  
# Này ???c dùng cho FTPS các k?t n?i  
#  
Include /etc/proftpd/tls.conf
```

[.]

Then open `/etc/proftpd/tls.conf` and make it look like this:

en `/etc/proftpd/tls.conf`

```
<IfModule mod_tls.c>
TLSEngine                on
TLSLog                   /var/log/proftpd/tls.log
TLSProtocol               SSLv23
TLSOptions                NoCertRequest AllowClientRenegotiations
TLRSACertificateFile     /etc/proftpd/ssl/proftpd.cert.pem
TLRSACertificateKeyFile  /etc/proftpd/ssl/proftpd.key.pem
TLSVerifyClient          off
TLSRequired              on
</IfModule>
```

If you use `TLSRequired on`, then only TLS connections are allowed (this will be blocked with older FTP clients that are not supported for TLS); Using `TLSRequired off`, TLS and non-TLS connections will be allowed depending on the support of the FTP client.

Restart ProFTPd:

`/etc/init.d/proftpd restart`

You can try connecting using your FTP client, but you should reconfigure it to use TLS (this is necessary if you use `TLSRequired on`).

If you have problems with TLS, you can see the `/var/log/proftpd/tls.log` log file.

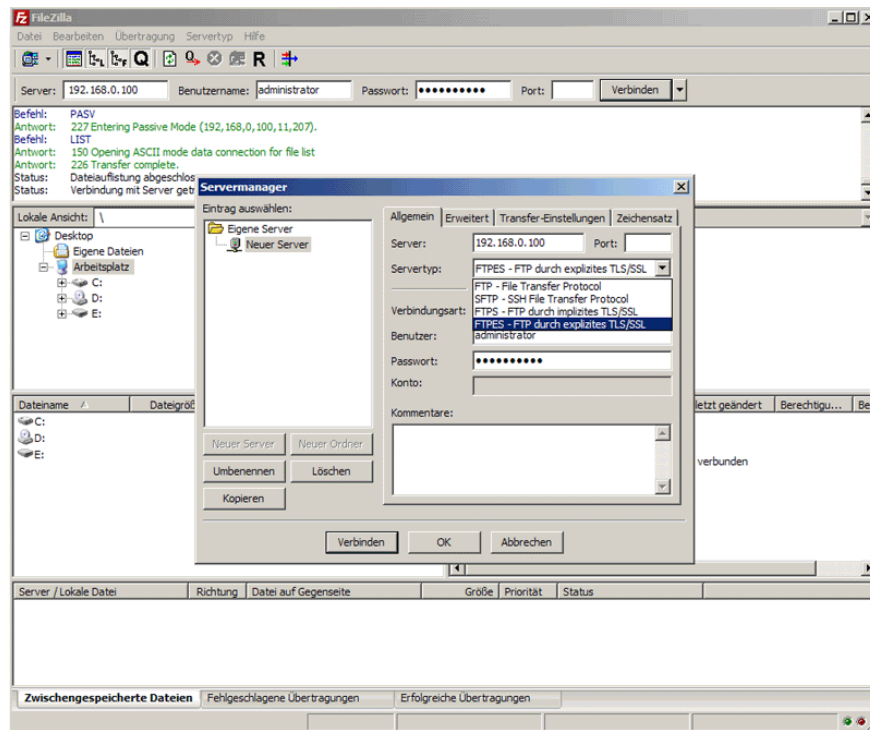
## Configure FileZilla for TLS

To use FTP with TLS, you need an FTP client that supports TLS, such as **FileZilla**.

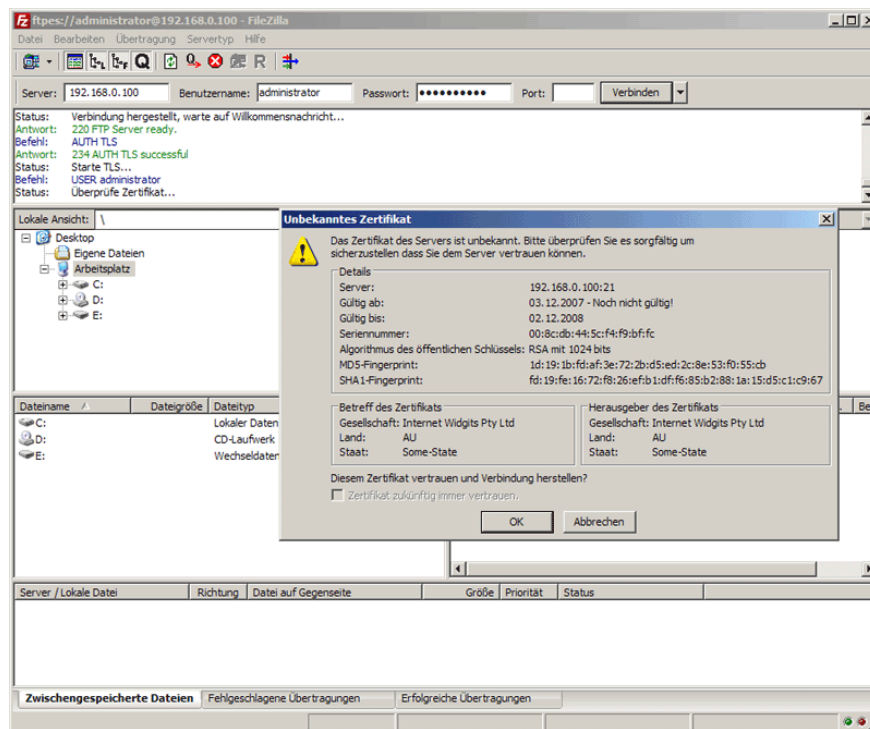
In FileZilla open **Server Manager** :



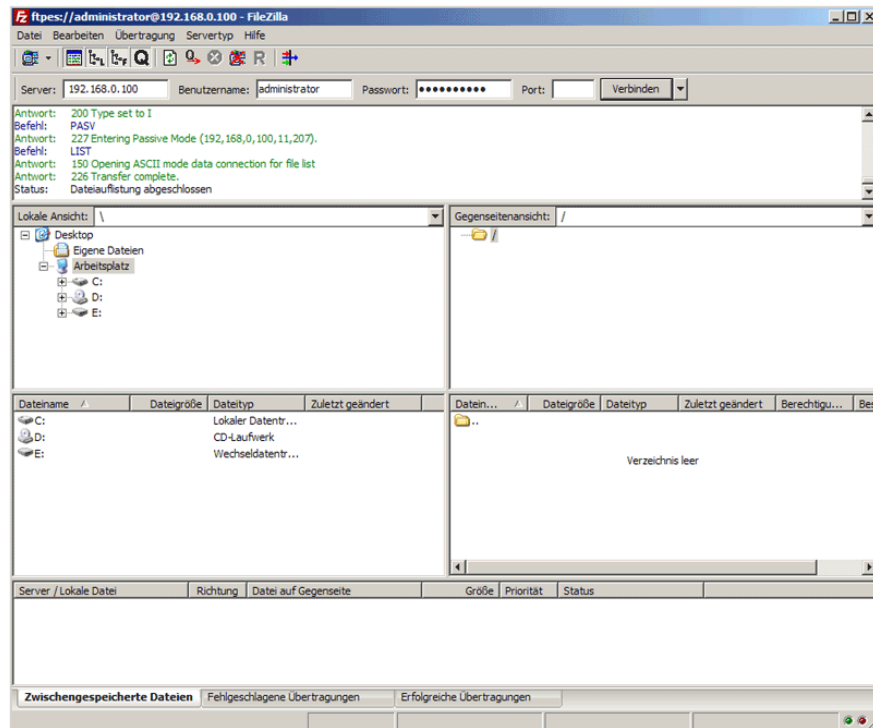
Select the server using ProFTPD with TLS. In the **Server type** of the drop-down menu, select **FTPES** instead of *FTP* :



You can now connect to the server. If this is your first time doing this, you need to accept the server's new SSL certificate:



Once everything goes smoothly, you will begin the process of logging into the server.



You finished reading the article "**Set up ProFTPd with TLS on Ubuntu 11.04**" edited by the [TipsMake](#) team. We hope this article has provided you with many useful tech tips and tricks. You can search for similar articles on tips and guides. Thank you for reading and for following us regularly.