

Set up preferred bandwidth for games, applications on Linksys router

Media Prioritization tool allows you to prioritize streaming devices or streaming applications with more bandwidth for best use on your home network.

Ensure that users can maximize bandwidth allocation for their favorite applications and services as one of the many features of the Linksys cloud account. **Media Prioritization** tool allows you to prioritize streaming devices or applications, with more bandwidth for best use on your home network.

This article will guide you to install applications or online games on higher priority bandwidth with cloud accounts.

NOTE : Make sure the **Prioritization** button is activated before doing anything else.



Higher priority bandwidth settings for games and applications

Step 1:

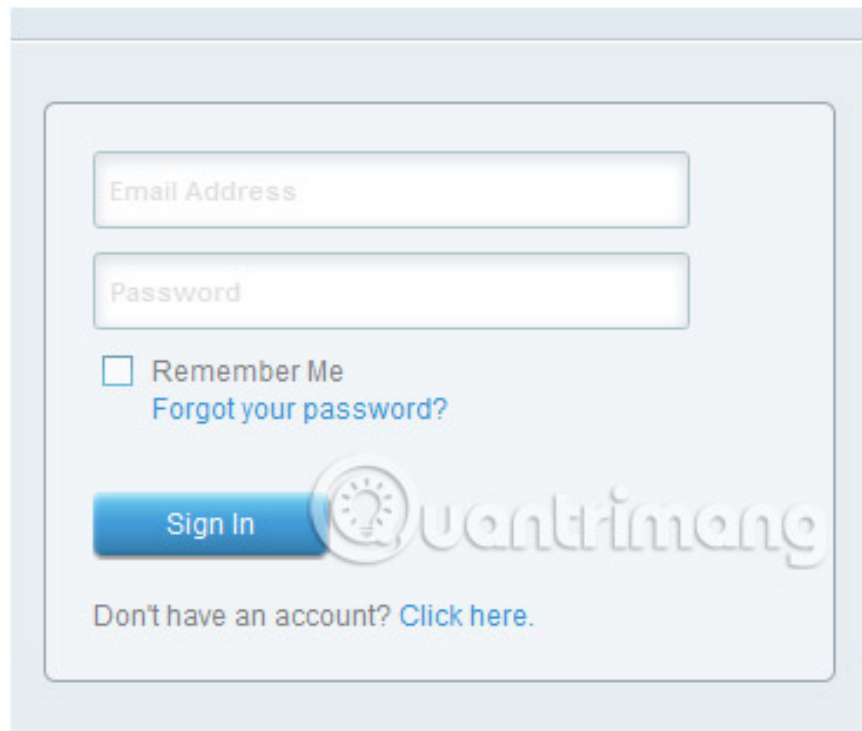
Access the cloud account. To create a cloud account, follow these instructions.

Note before you start: If you create the Linksys cloud account for the first time, you should connect to the wireless network of the Smart Wi-Fi Router, to combine your new account on Linksys Smart Wi-Fi Router .

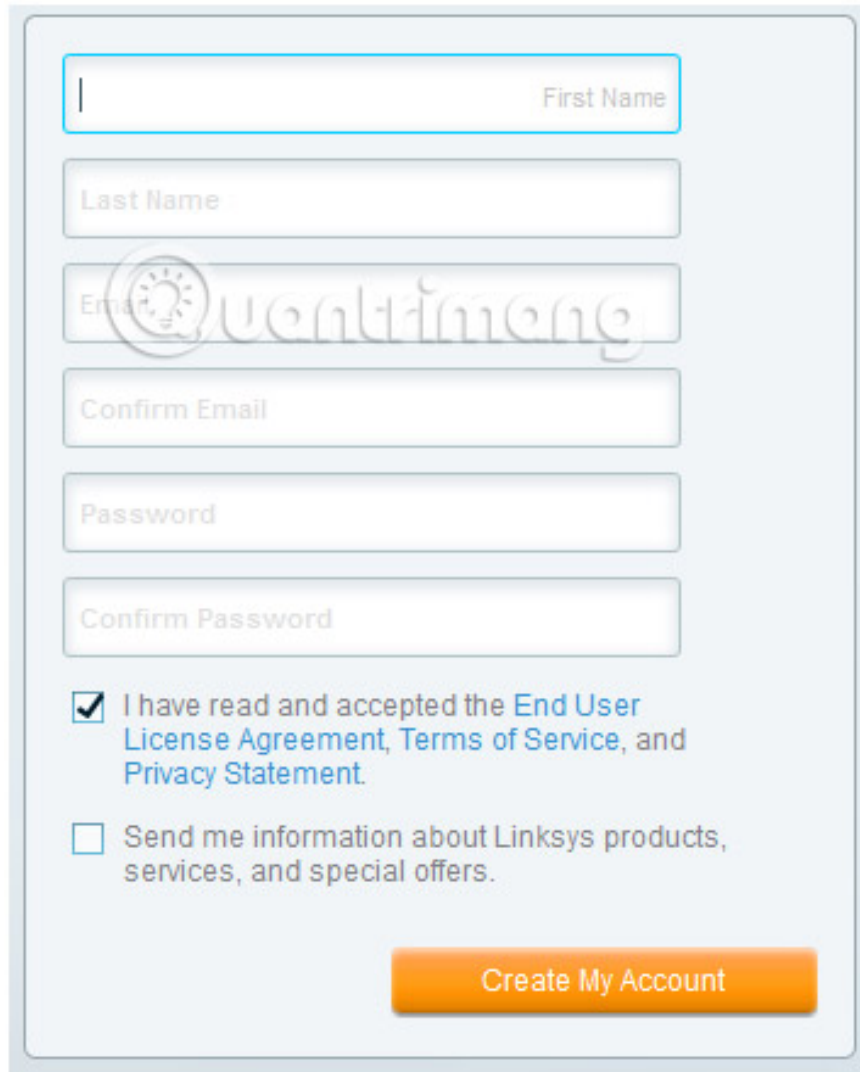
B1: Open the browser and enter '**linksysmartwifi.com**' in the **Address** bar and press **ENTER** to access the login page.



B2: Click the **Click here** link .



B3 - Create an account: Enter the required information in the fields provided. Read and accept the **End User License Agreement, Terms of Service** and **Privacy Statement** , then click **Create My Account** . You will receive an email, asking you to activate your account.



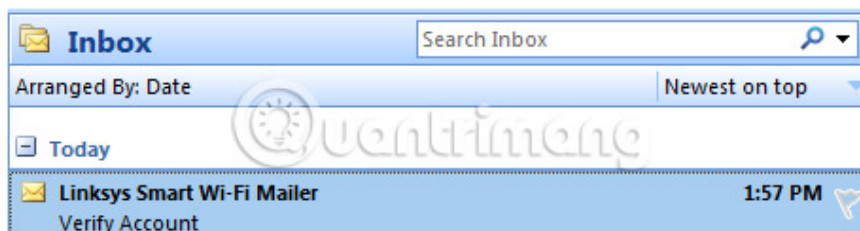
A registration form with the following fields and options:

- First Name
- Last Name
- Email (with a watermark logo)
- Confirm Email
- Password
- Confirm Password
- I have read and accepted the [End User License Agreement, Terms of Service, and Privacy Statement](#).
- Send me information about Linksys products, services, and special offers.
- [Create My Account](#) button

Selecting **Send me information information about Linksys products, services, and special offers** is not required.

If the page appears to be corrupted (for example, there is no field to import), refresh the page or try using another web browser because there may be an outdated plug-in or add-on.

B4: Check your inbox in your email. Open a message from Linksys Smart Wi-Fi Mailer.



NOTE : If no message is found in the inbox (**Inbox**), check the **Junk** or **Spam** folder (spam). If you have not received or have missed the deletion of the message, request to resend the authentication email.

B5 - Activate your account: Click the link in the email you received to activate the Linksys cloud account you just created. This will open a new window, taking you to the Linksys Smart Wi-Fi page.

<http://linksysmartwifi.com/ui/dynamic/account-verification.html?verificationToken=C9ADDB34EDBF4CF5A36309D61FE3BBD1CF414A76E58B4137AA6C7344FFEB4E3E&lang=en-US>

B6: You will see the **Account is now validated message** , after the account is authenticated. Click the **here** link to login.

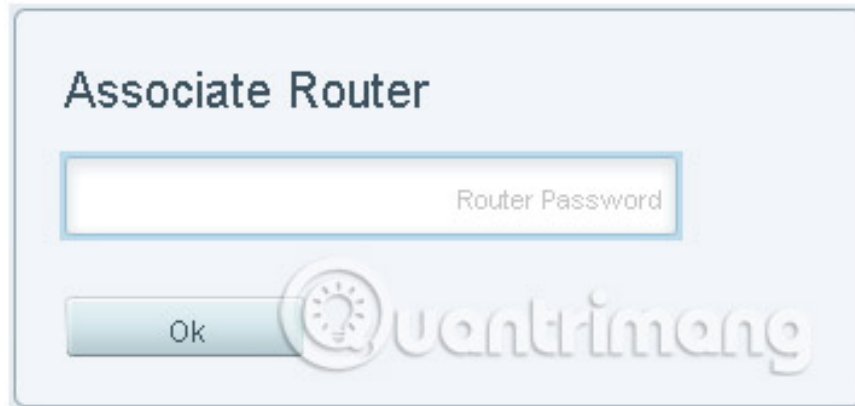


NOTE: You can also click the **Login** button in the upper corner of the window.

B7 - Login: Enter the email address and password of the Linksys cloud account you just created and click **Sign In**.

A screenshot of a login form with a light blue background. It features two input fields: "Email Address" and "Password". Below the password field is a checkbox labeled "Remember Me" and a blue hyperlink "Forgot your password?". A blue "Sign In" button is positioned to the left of a large, faint "Quantimang" watermark logo. At the bottom, the text "Don't have an account? Click here." is displayed, with "Click here" as a blue hyperlink.

B8 - Router Link: Link the Router to your account by entering the router's admin password in the space provided and click **OK**.



NOTE:

The router password is set to **admin** by default. However, if you have changed it, use the current router password instead.

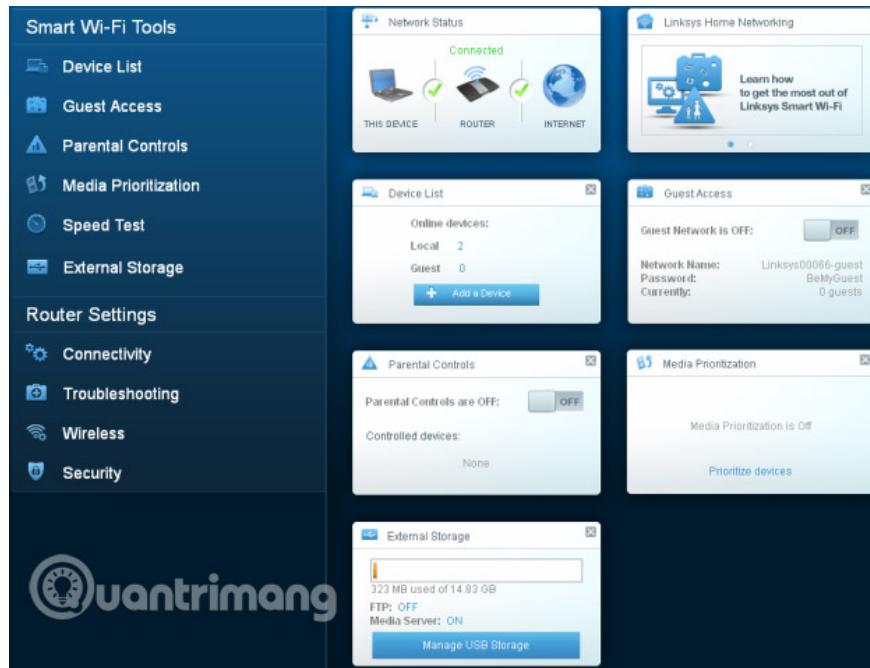
The router link can only be performed when you are currently connected to your home network. You cannot associate your account remotely.

If you have a number of failed login attempts, this may result in your account being temporarily deactivated. In case you cannot remember your password, you must perform a password reset, then return to log in again.

You have now successfully created your Linksys cloud account and linked it to the Linksys Smart Wi-Fi Router. Now you can manage the Linksys Smart Wi-Fi Router with your Linksys cloud account from anywhere, via a web browser or using the Linksys application.

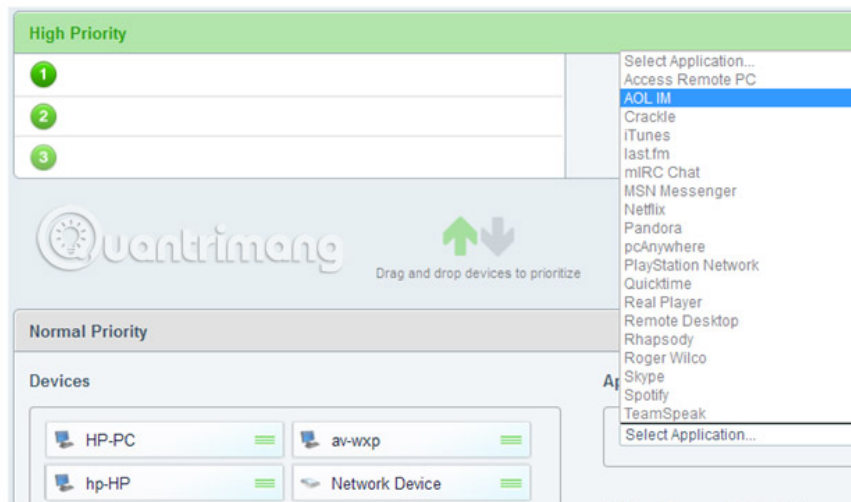
Step 2:

Click **Media Prioritization**.



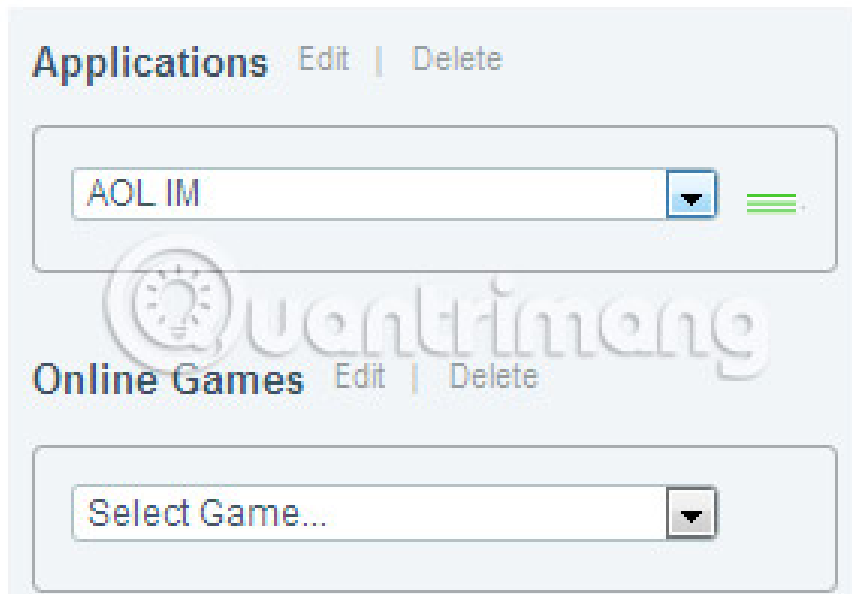
Step 3:

Select an application from the drop-down list.



Step 4:

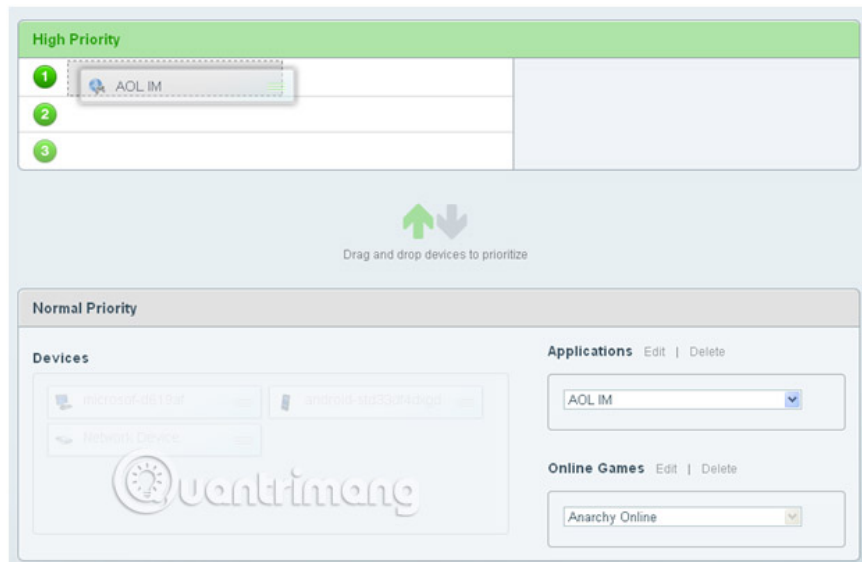
Click the tool element next to the **Applications** list .



Step 5:

Drag and drop the application from the **Normal Priority** list into **High Priority**.

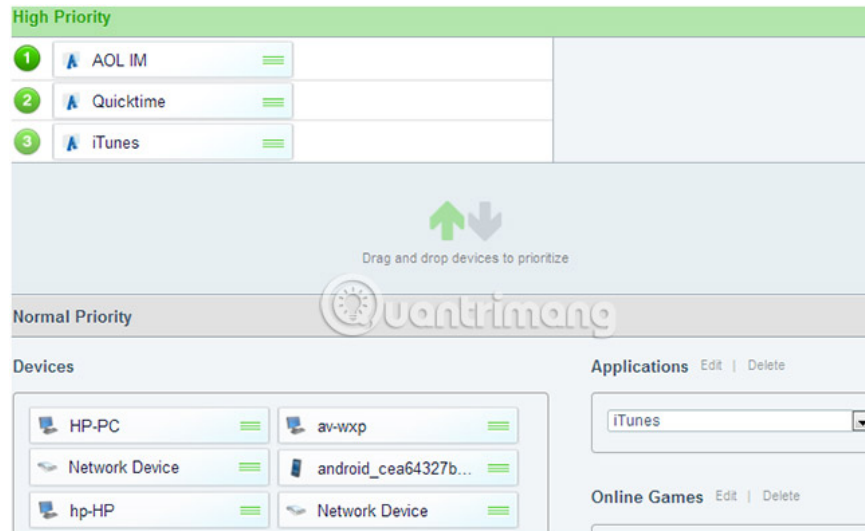
You can use the order **1, 2** or **3** to determine the priority you want to use.



Step 6:

Click **OK**.

Now, you have successfully set the priority for applications with cloud accounts.



In addition to applications, you can also add online games that you want to have higher bandwidth priority. To do this, follow the steps above but apply to the **Online Games** section found in the **Normal Priority** section .

IMPORTANT : For users who stream videos and music, you should place the service or application in **High Priority** section for the best streaming experience.



Expand your network

In addition to configuring advanced features of the Smart Wi-Fi Routers, you can still do more. By connecting additional devices, you can extend the wireless signal to adapt to hard-to-reach areas in the home, and even connect more devices (both wired and wireless) to play games or entertain.

See more:

1. How to calculate network bandwidth and transmission required
2. Internet acceleration 20% faster in Windows
3. Why is upload speed usually much slower than download speed?

You finished reading the article "**Set up preferred bandwidth for games, applications on Linksys router**" edited by the [TipsMake](#) team. We hope this article has provided you with many useful tech tips and tricks. You can search for similar articles on tips and guides. Thank you for reading and for following us regularly.