

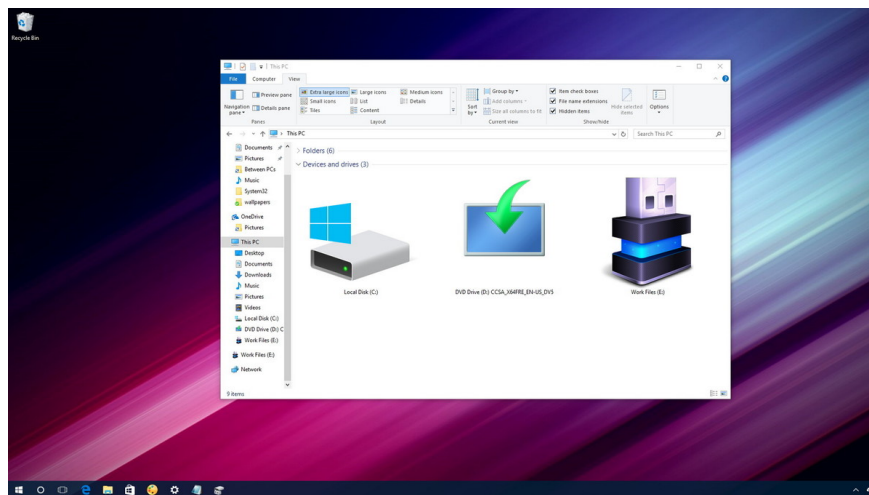
# Set up custom icons for portable hard drives on Windows 10

If it feels tedious to see the same icons every time you connect mobile devices and hard drives on your computer, and you want to replace the old icons with vivid icons, more fun. You can then set up custom icons that you want for your device or a portable hard drive to connect to your computer.

Whenever you connect a device or a portable hard drive (such as a USB drive, etc.) on your computer, Windows 10 will quickly receive and display the device's default name and icon or drive. That mobile hard.

However, if you find it tedious to see the same icons every time you connect mobile devices and hard drives on your computer, and you want to replace the old icons with icons more lively, more fun. You can then set up custom icons that you want for your device or a portable hard drive to connect to your computer.

In the following article, the network administrator will guide you through the steps to add a custom icon and name to the connected external hard drive on your Windows 10 computer.



## Set up custom icons for portable hard drives

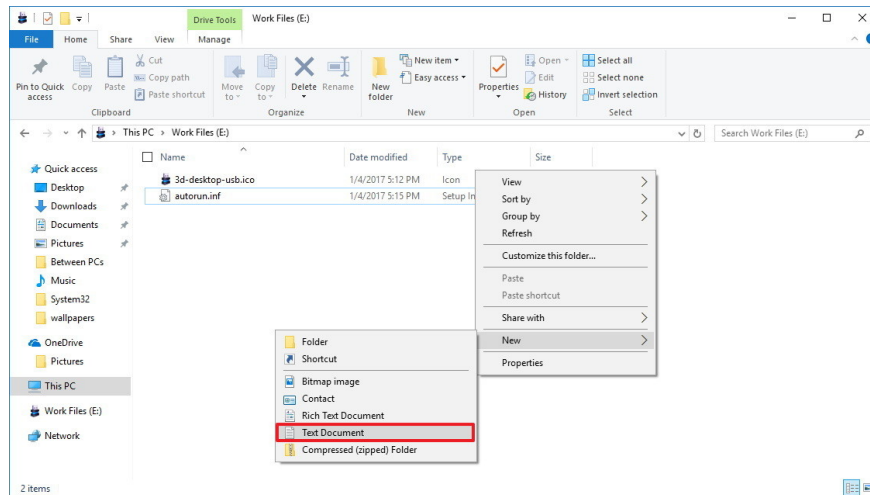
Perform this process to display a customized icon for a removable hard drive, including an icon file (.ico) and **autorun.inf** file, which you will store on a portable hard drive (USB drive) term, (.).

Before you proceed, you need to have an icon file (.ico) that you want to use. You can find both 'heap' icons on websites, including many free icons available that you can download and use.

In the tutorial below, Network Administrator will use a USB icon from IconArchive, but you can download different icons on different websites and use.

After downloading the **.ico** file, you will have to proceed to copy this icon and create the **autorun.inf** file on the portable hard drive. To do this, follow the steps below:

1. Connect the portable hard drive you want to set up a custom icon.
2. Use **File Explorer** to open the mobile hard drive.
3. In the root of the removable hard drive, right-click it and select **New => Text Document**.



4. Name the file **autorun.inf** and press **Enter**.

**Note:**

If your system does not display the file extension, open the **View** tab on File Explorer, then click the File name extensions option to rename the text file autorun.inf.

If not, after changing the file name to **autorun.inf.txt** , this file will not be correct.

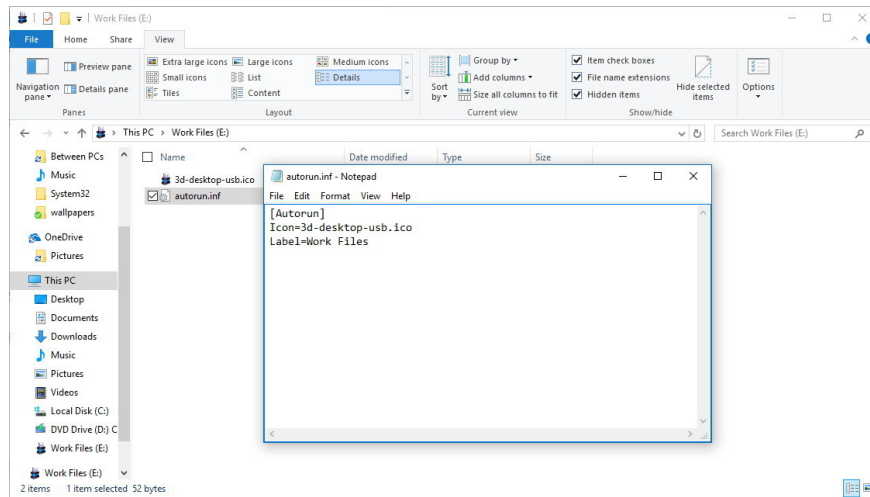
In addition, readers can refer to the steps for displaying folders, files and extension sections on Windows 7, 8 and 10 here.

5. Click **Yes** to confirm the file name change.
6. Double-click **autorun.inf** to open the file and copy and paste the following lines into:

[Autorun]

Icon = icon-name.ico

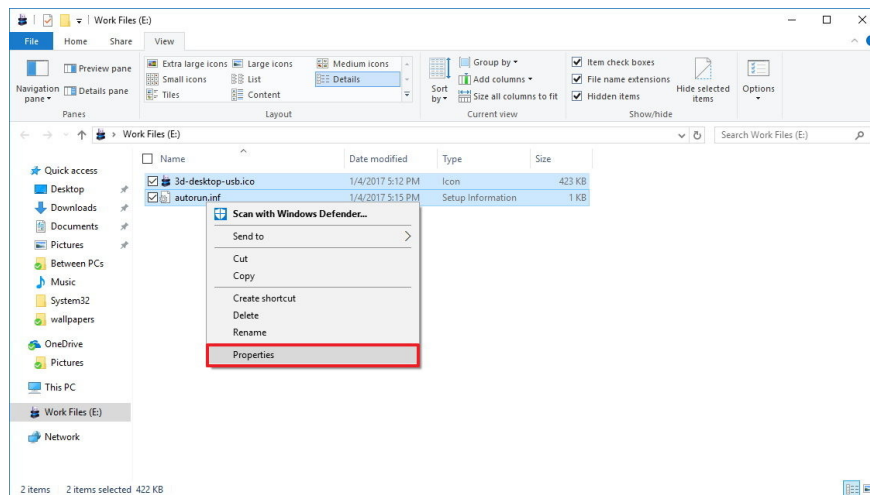
Label = drive-label



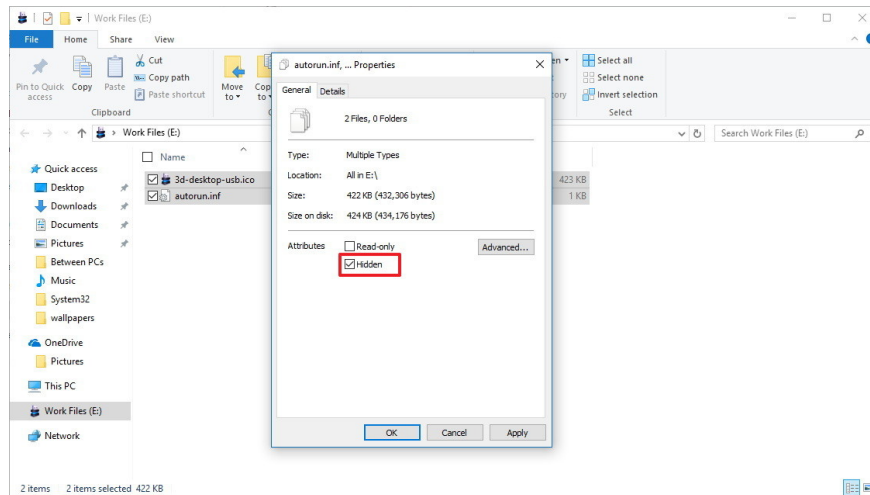
**Note:**

In the **Icon** section, make sure you have changed the **icon-name.ico** with your icon name (icon) and the **Label** item you have changed the drive letter name you want.

7. Click **File**.
8. Click **Save**.
9. Close the text editor window.
10. Select the **autorun.inf** file and the **icon** file.
11. Right-click it and select **Properties** .



12. On the Properties window, in the **Attributes** section, select the **Hidden** option to hide important files in the drive and you do not delete the wrong files.



13. Click **Apply** .

14. Click **OK** to complete the process.

After you have completed the steps, proceed to disconnect the mobile hard drive connected to your computer, then proceed to insert the USB drive again. And on **File Explorer** you will see a new icon and name for your mobile hard drive.

If you want to go back to the original settings, simply open **File Explorer** , then open your portable hard drive, make sure that at the **ab View** , the item **Hidden items** is checked, then Then proceed to delete the **icon** file and **autorun.inf** and you're done.

## Refer to some of the following articles:

1. How to login Windows 10 automatically without entering a password
1. Clean up traces of Pagefile every time you turn off your Windows 10 computer
1. Instructions for activating Keyboard Backlight on Windows 10

**Good luck!**

You finished reading the article "**Set up custom icons for portable hard drives on Windows 10**" edited by the [TipsMake](#) team. We hope this article has provided you with many useful tech tips and tricks. You can search for similar articles on tips and guides. Thank you for reading and for following us regularly.