

Set up control and use KTorrent remotely

KTorrent is a BitTorrent client application of KDE with a variety of features and a very useful plugin system, allowing users to connect and remote control via the browser ...

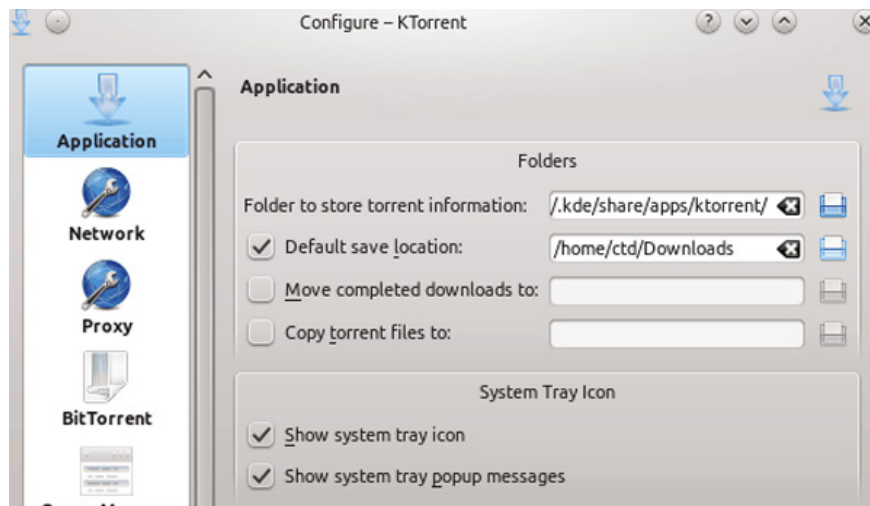
QuanTriMang - KTorrent is a BitTorrent client application of KDE with a variety of features and a very useful plugin system, allowing users to connect and remote control via the browser. In the following article, we will discuss and learn how to use this KTorrent utility.

Installation and setup:

To install KTorrent for Linux-based platforms, type the following command in Terminal:

```
sudo apt-get install ktorrent
```

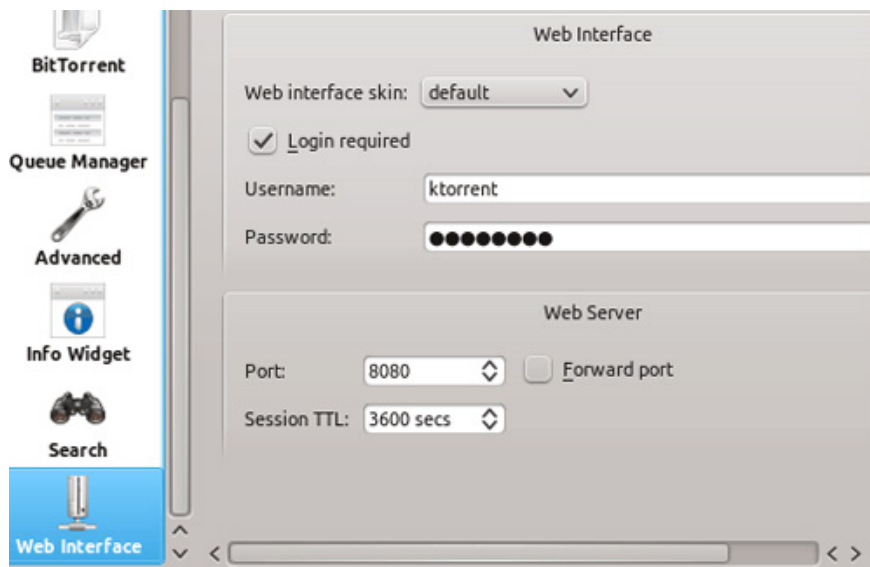
After successful installation, start KTorrent on the computer you want to use. And then you need to configure before using and remote control. At the main monitor screen, click **Settings> Configure Ktorrent:**



Here, correct the default location where you want to save the torrent file. The web-based console does not allow users to access these settings remotely. Click OK when finished:



Next, select the Plugins tab in the left window, check the Web Interface box to enable management and remote control. After that, go back to **Settings> Configure Ktorrent** and select Web Interface, the program will provide options for users to log in via account using ID and password. Another point to note is that the default web server port is not used by any other application:



Click OK to apply the change, and now you have a KTorrent web server running right on your computer. To check if this system is working, open the web browser and type the address *http://localhost: 8080 /*, replace the default port 8080 with the port value used. For ease of use, you can start KTorrent directly from the host computer and keep it running in the system tray. If you want to boot and set up remotely, use the SSH protocol.

Before proceeding to the next steps, we need to check and make sure that the tricked wall system allows and accepts the use of this connection. Next, we will login to the remote controlled computer via SSH:

```
ssh -l username ipaddress
```

Replacing the username with the account used on the computer, and ipaddress with the IP address, the system will ask you to enter the corresponding username and password. Then type the following command:

```
ktorrent --display: 0 &
```

If the user does not log into the display mode: 0 X then change to a certain value. If you're still unsure about the performance of this process, check again:

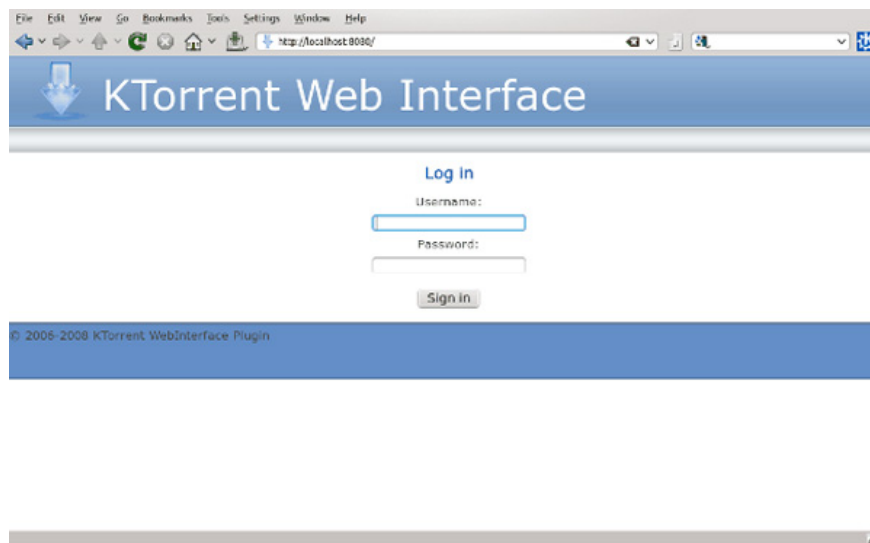
```
ps aux |grep ktorrent
```

You will now have the option to assign torrent URL links directly via SSH:

```
ktorrent /path/to/torrent/file/filename.torrent --silent
```

Web display:

KTorrent's web interface is quite simple but still fully functional. First, open the web browser, enter the IP address or hostname of the computer that runs KTorrent, and finally enter the active port value, for example *http://192.168.1.1:8080* :



If the above parameters are declared correctly, you will see the header and login form of KTorrent displayed. Enter the username and password created during the initialization process. On the first page, we will see the Torrent tab, to add a new file, click the **Load Torrent** button, and there are 2 main ways to accomplish this process:

- Direct path of torrent file from website
- Torrent files are available on the computer

After entering the URL, click the **Upload Torrent** button:

Load a torrent

URL:

Example: <http://ktorrent.org/down/latest>

Load Torrent

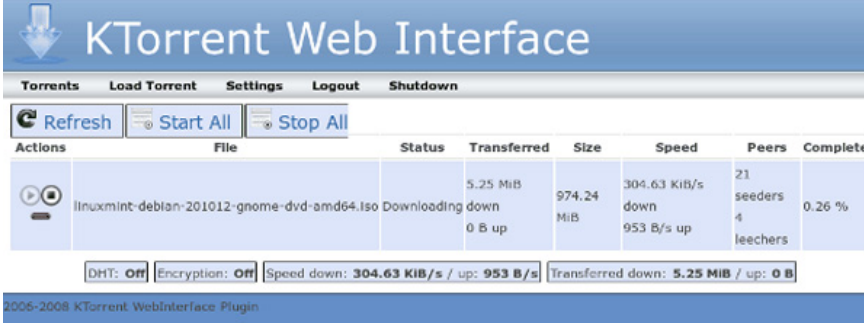
Upload a torrent

File path:

Upload Torrent

Go back to the Torrent tab to adjust and set other specifications:



The screenshot shows the KTorrent Web Interface with a navigation bar containing 'Torrents', 'Load Torrent', 'Settings', 'Logout', and 'Shutdown'. Below the navigation bar are buttons for 'Refresh', 'Start All', and 'Stop All'. A table displays the status of a torrent:

Actions	File	Status	Transferred	Size	Speed	Peers	Complete
	linuxmint-debian-201012-gnome-dvd-amd64.iso	Downloading down	5.25 MiB 0 B up	974.24 MiB	304.63 KiB/s down 953 B/s up	21 seeders 4 leechers	0.26 %

At the bottom, there are status indicators: DHT: Off, Encryption: Off, Speed down: 304.63 KiB/s / up: 953 B/s, and Transferred down: 5.25 MiB / up: 0 B. The footer text reads '© 2005-2008 KTorrent WebInterface Plugin'.

The third item to note is **Settings** - but only contains a portion of the settings available in the Ktorrent application, allowing you to change some other attributes such as average upload / download speeds . And like when using directly on the computer, you can turn off logging out of the account or turn off the program when the download or upload process is complete. Good luck!

You finished reading the article "**Set up control and use KTorrent remotely**" edited by the [TipsMake](#) team. We hope this article has provided you with many useful tech tips and tricks. You can search for similar articles on tips and guides. Thank you for reading and for following us regularly.