

# Set up a wireless home network with 4 basic steps

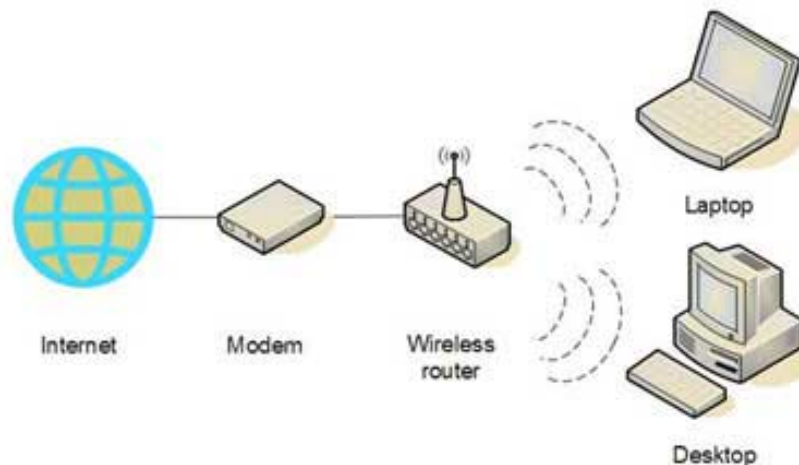
You can design for yourself a simple wireless network, to share Internet access, files, printers ... You can surf the Net while you are in the yard, or in the garden ... To set up a Wireless computer network is quite simple, you just need to do it in 4 steps:

**In your family, you have some computers but are still not connected. You want to share the file connection, Internet sharing, printer . But you don't know where to start? Should you choose a network solution that is both simple and effective, without having to worry about a "pile" of wires?**

You can design for yourself a simple wireless network, to share Internet access, files, printers . You can surf the Net while you are in the yard, or in the garden . To set up a Wireless computer network is quite simple, you just need to do it in 4 steps:

1. Select equipment
2. Connect wireless routers
3. Configure wireless router
4. Connect computers

For Windows XP users, Windows XP SP2 allows easier network setup, not only does SP2 help you fight hackers, worms, and wireless intruders.



Wireless network model for families

### **Step 1: Select wireless devices**

First of all, you need to have wireless transmitters. If you are looking for products in stores, or on the Internet, you need to pay attention to devices that support the three most popular wireless technologies today: 802.11a, 802.11b, 802.11g. However, 802.11g is recommended because it allows for the highest performance and compatibility with most other products.

#### ***The equipment to be purchased includes:***

1. Broadband Internet connection
2. Wireless router
3. Computers have integrated wireless devices, or you have to buy more wireless network cards.

#### ***Wireless router***

The router converts signals from an Internet connection to broadcast wireless connections, similar to a wireless telephone device's broadcast station. Also note that you must purchase a wireless router, not wireless access points.

#### ***Wireless network cards***

Wireless network card connects your computer to wireless routers. If you have a new laptop, chances are your computer already has an integrated wireless network card. In other cases, you need to buy a wireless network card. If you need to buy a wireless network card for a desktop, you should buy a USB type. If you are using a laptop, buy a PC card.

*Note:* To create an easy connection, you need to select the wireless network card with the wireless router manufacturer. For example, you will see that Linksys routers have a good price, you will always choose a Linksys network card. To make shopping easier, buy a set from D-Link, Netgear, Linksys, Microsoft, etc. If you use a desktop computer, make sure you have a USB port available. If you don't have a USB port, you must buy an additional USB port.

### **Step 2. Connect to the wireless router**

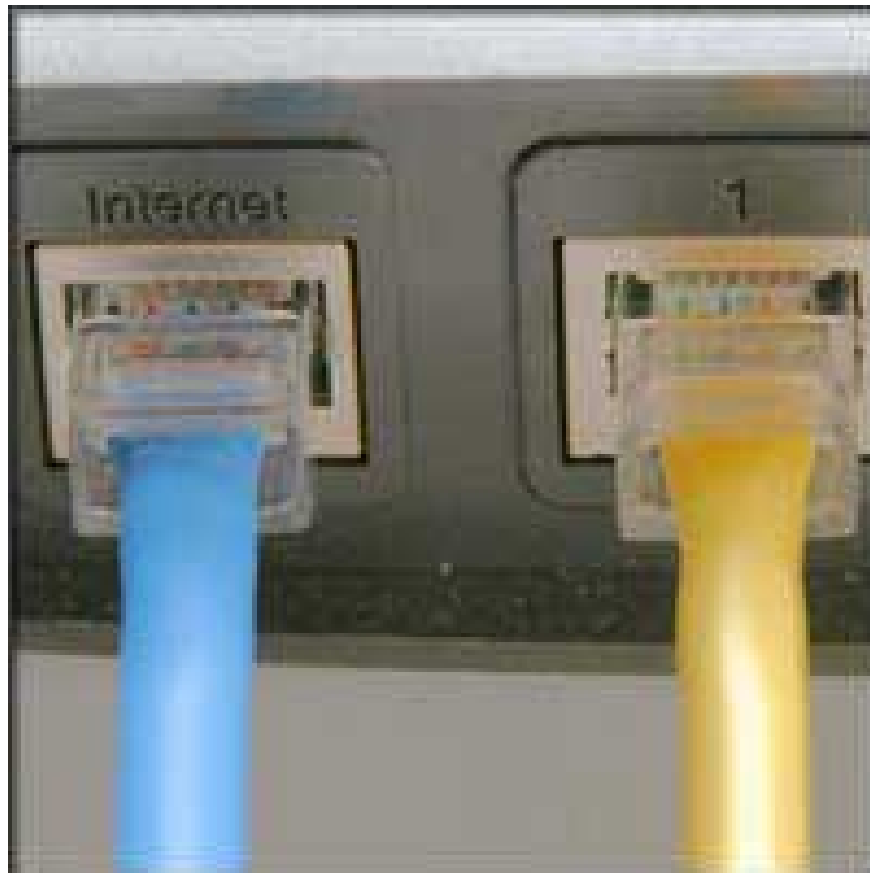
You should temporarily disconnect from the Internet. First, you need to determine if you are using a cable modem or DSL modem, then unplug it (or turn off the power).

After that, you connect your wireless router to the modem. Your modem must be sure to work well (still accessing the Internet). Then, when everything is complete, your computer will connect wirelessly to the router, and the router will connect to the Internet via a modem.

***Here is the step to connect the router to the modem:***

Note: The instructions below are used for Linksys routers. If you use another type of modem, please read the documentation that came with your device carefully.

1. *If you have a computer connected directly to the modem:* you need to remove the network cable connector behind your computer, and plug it into the port labeled Internet, WAN, or WLAN behind your wireless router. .
2. *If you do not have a computer connected to the internet:* Plug a network cable plug into the modem, and the other end of the network cable is connected to an Internet, WAN, or WLAN port in the wireless router.
3. *If you have a computer that is connected to the router:* Remove the network connection on the Internet, WAN, or WLAN port in the old router, and plug it into the Internet, WAN, or WLAN port of the new router. And then, put all the network cable plugs from the old router's ports to the connection port of the new router. You will no longer need the old router because the new router will replace the job.



#### Wireless Router ports

Then, after the physical connection is complete, turn on your cable modem or DSL modem. Wait a few minutes for the device to have Internet connection time, and then turn on the wireless router. A few minutes later, the Internet, WAN, or WLAN lights in the wireless router will light up, indicating that you have connected

successfully.

### **Step 3: Configure the wireless router**

Using a network cable that comes with your wireless router, you need to temporarily connect your computer to one of the wireless router's empty ports (any port without Internet, WAN, or WLAN labels). Turn on your device, your PC will automatically connect to the router.

Open IE, and type the IP address to configure the router. You may have to type the password. The password and address names will vary, depending on the router you purchase, you need to see the instructions in the documentation. The table below is a configuration of addresses, password names are often used by the manufacturer's default.

**Router**  
**Address**  
**Username**  
**Password**

3Com

<http://192.168.1.1>

admin

admin

D-Link

<http://192.168.0.1>

admin

\*

Linksys

<http://192.168.1.1>

admin

admin

Microsoft Broadband

<http://192.168.2.1>

admin

admin

Netgear

http://192.168.0.1

admin

password

IE will display your router's configuration page. Most of the default configurations are fine, but you need to pay attention:

1. *Your wireless network name, often called SSID:* This name identifies your network. Therefore, you need to give a different name and not the name that your neighbor is using.
2. *WEP wireless encryption, and wireless access protection (WPA):* will make your wireless network more secure. Most routers, you need to provide because the characters to your router generate the key. Please type these characters only without repeating (you do not need to remember these characters). Then write down the keys that the router generated itself.
3. *Admin password, wireless network configuration key:* Like other passwords, the password for the router cannot be a word in the dictionary, it needs to be a combination of characters, numbers, expressions statue. But it is also important to remember them, because you will have to type the password when logging in to reconfigure the router.

The configuration steps can be very different between routers, but ever in each configuration setting there are items like: Save Settings, Apply, and OK to save your changes. You can turn off the network connection from the device you are using to configure.

#### **Step 4: Connect the computers**

If your computer does not have a wireless network card built-in, plug the wireless network device into the USB port, and put the antenna to the highest position (put on the top of the desktop case), or You plug the wireless PC card into the slot (laptop). Windows XP will automatically receive new network cards, and may require you to install the software. Please insert the driver installation disk for the network card when required. The installation wizard screen will help you install the driver within minutes.

Note: The steps below also use Windows XP SP2. If you use Windows XP without SP2, please install SP 2 at <http://www.microsoft.com/windowsxp/sp2/default.mspx>. Windows XP will display a notification dialog received. wireless network.

*To connect to a wireless network you need to follow the steps:*

Right-click the wireless network icon in the lower right corner of the screen, and click View Available Wireless Networks. If you have trouble, refer to the documentation that comes with the network card. Don't be afraid to contact the technical provider if you are having difficulties.

The wireless connection window will appear and you will see the wireless network will appear with the name you choose. If you do not see the network, click Refresh network list at the top left. Click on your network, and click the Connect button.

Windows XP will prompt you to enter the key. Type the encrypted key you wrote earlier in both the Network key and Confirm network key fields, and then click Connect.

*Note:* *The* Wireless Network Connection window still appears Acquiring Network Address, you may have mistyped the encryption key.



Successful connection to the wireless network

Windows XP will show the process of connecting to the network. After you are connected to the network, you can close the Wireless Network Connection window.

Congratulations, the wireless network setup was successful.

**Minh Phuc (According to Microsoft)**

You finished reading the article "**Set up a wireless home network with 4 basic steps**" edited by the [TipsMake](#) team. We hope this article has provided you with many useful tech tips and tricks. You can search for similar articles on tips and guides. Thank you for reading and for following us regularly.