

# Set the shutdown or hibernate time for the computer

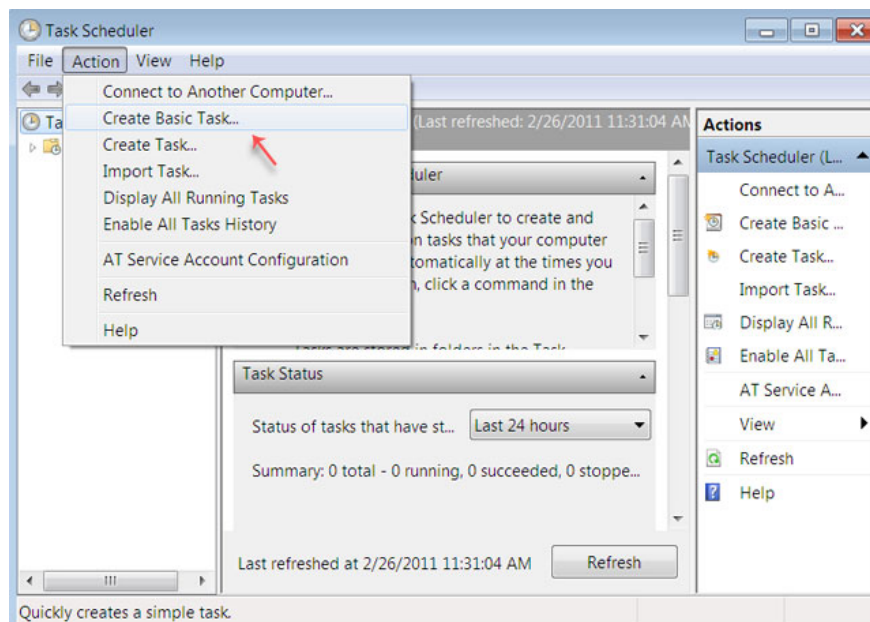
For many computer users, I am very interested and want to know how to turn off the computer (shutdown) or hibernate (hibernate) at a set time. The easiest way to do this is to set the open application windows to close automatically and the computer will shut-down or switch to hibernate mode after a specified time through Power settings. Option.

For many computer users, I am very interested and want to know how to turn off the computer (shutdown) or hibernate (hibernate) at a set time. The easiest way to do this is to set the open application windows to close automatically and the computer will shut-down or switch to hibernate mode after a specified time through Power settings. Option.

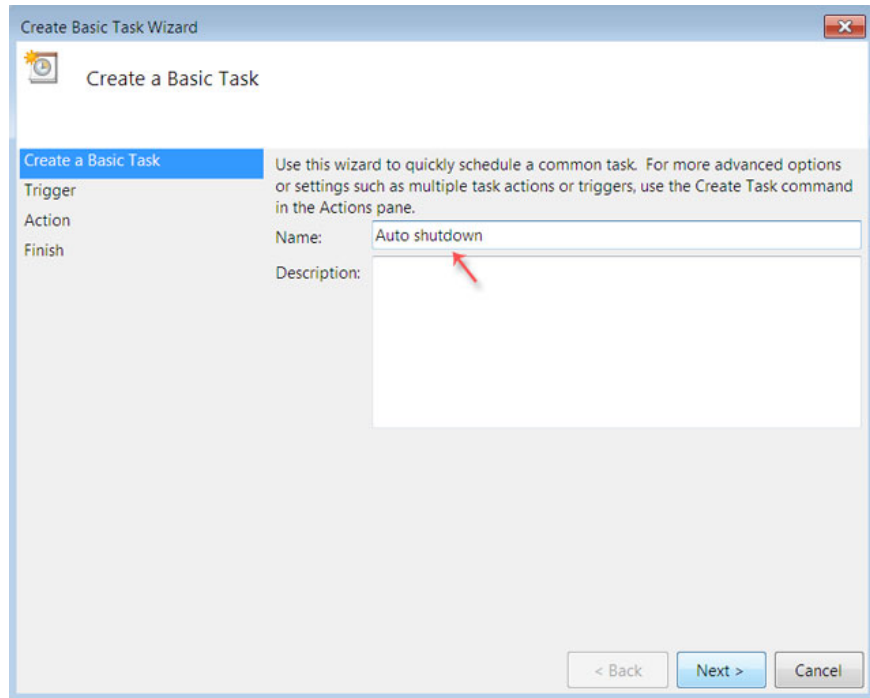
The reason we give the option Power Option because this solution is very useful in case you want Windows to shut-down itself at a specific time without installing any additional software, such as 3 hours Bright - when you can overslept on the keyboard.

## Steps to take:

1. Start **Windows Task Scheduler** by clicking **Start** and entering the Task keyword or Schedule into the search box for *Search programs and files* .
2. In **Action** menu select **Create Basic Task** to open the **Task Wizard** .

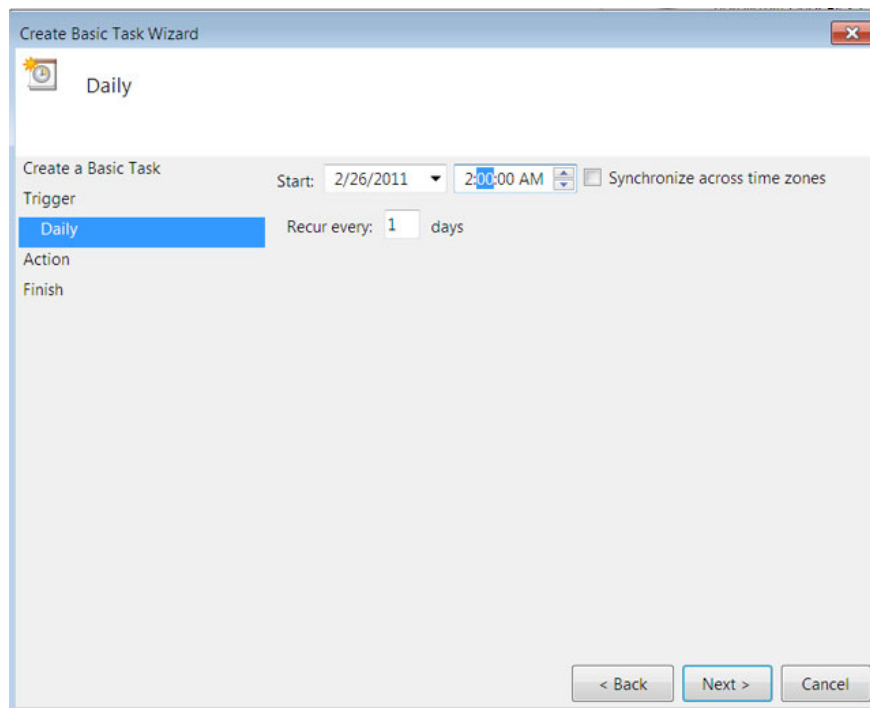


3. Enter the name of the task you will do (eg *Auto shutdown* ) and click **Next** .

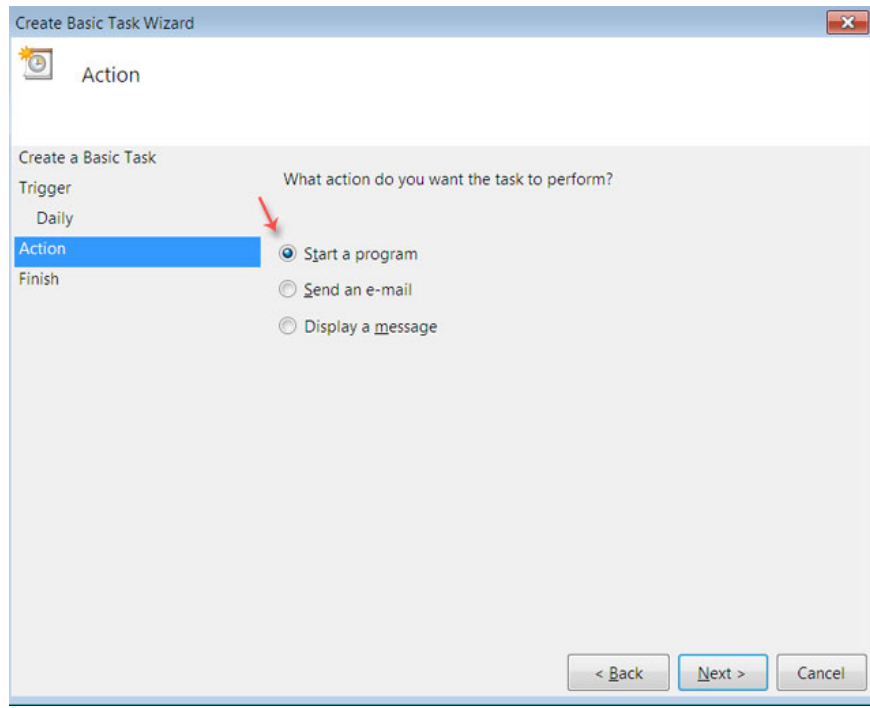


4. Select the time to do the job. Here we select **Daily** , then click **Next** .

5. Next, select the time you want the computer to shut down. For example, 2 am then press **Next** .

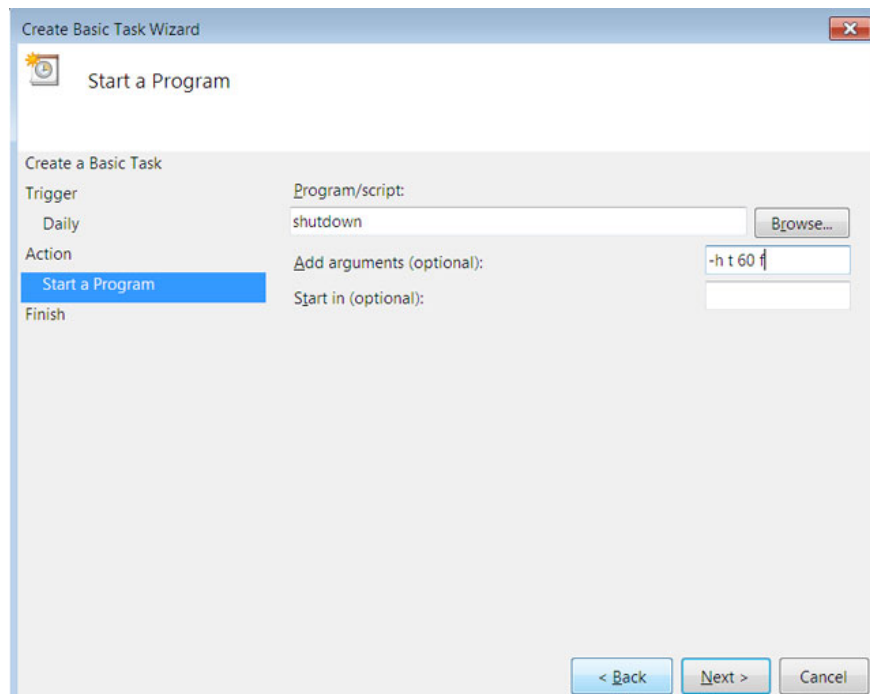


6. Windows will ask you to select a task to run, click **Start a Program** then click **Next** .



7. In the **program** entry enter shutdown .

8. In the **Add argument** entry section: **-ht 60 f** (or **-st 60 f** ). This argument means that after 60 seconds all operations will stop, the running applications will be turned off and the computer goes into hibernate (hibernate).



9. Click Next

10. Finally select **Finish** .

## Shutdown options

**s** = shutdown

**h** = hibernate

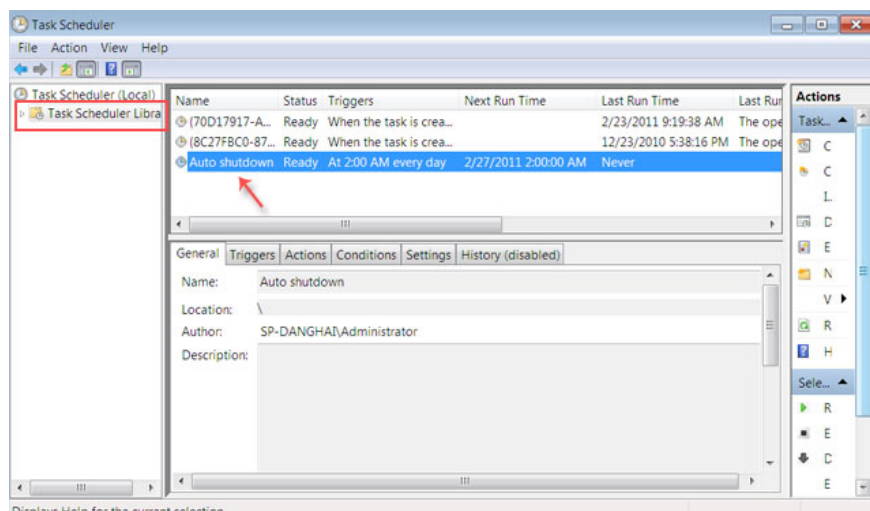
**l** = logoff

**t xxx** - with xxx is the remaining time (before executing certain commands).

**f** - turn off running applications.

**p** - Execute the command without waiting time or warning.

## Edit established categories



If you want to edit or delete the created items, simply open the **task scheduler** window and click on the '**task scheduler library**' section in the left sidebar. Here will list the schedules you have created like '*Auto shutdown*'. Good luck!

You finished reading the article "**Set the shutdown or hibernate time for the computer**" edited by the [TipsMake](#) team. We hope this article has provided you with many useful tech tips and tricks. You can search for similar articles on tips and guides. Thank you for reading and for following us regularly.