

Set the basic parameters for the computer.

In a computer system, the BIOS is a fundamental input/output system program that stores basic computer information that you can edit and configure. This article from TipsMake will guide you on how to set up basic computer parameters.

Each computer has a different BIOS interface because they have different motherboards. The changes made to the BIOS can be applied immediately after the operating system starts up.

Settings Computer

The main points presented in this article are for setting up basic parameters for your computer.

- *Access the BIOS interface*

- *Perform basic settings in the BIOS:*

- + **Set the time**
- + **Set drive information**
- + **Set the general computer configuration**
- + **Set a password to protect the computer +
Reset system defaults**
- + **Save the settings**

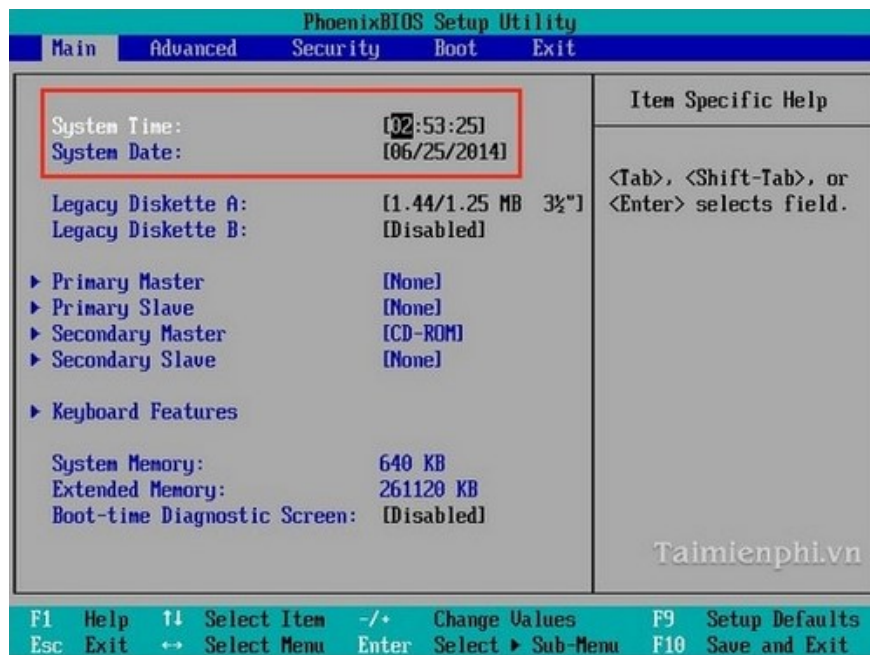
This setup will help your computer run more efficiently. Accessing **the BIOS Setup** depends on your motherboard, but most desktop computers use the **Delete (DEL)** key . Laptops use **ESC, F1, F2, F10, F12**, and some may use **Ctrl+ESC, Ctrl+Alt+ESC, Alt+ESC, Ins** , or you can press certain keys to access BIOS Setup during startup.



Then the BIOS interface appears with tabs **and a menu** system containing functions for you to configure.

1. Set the time

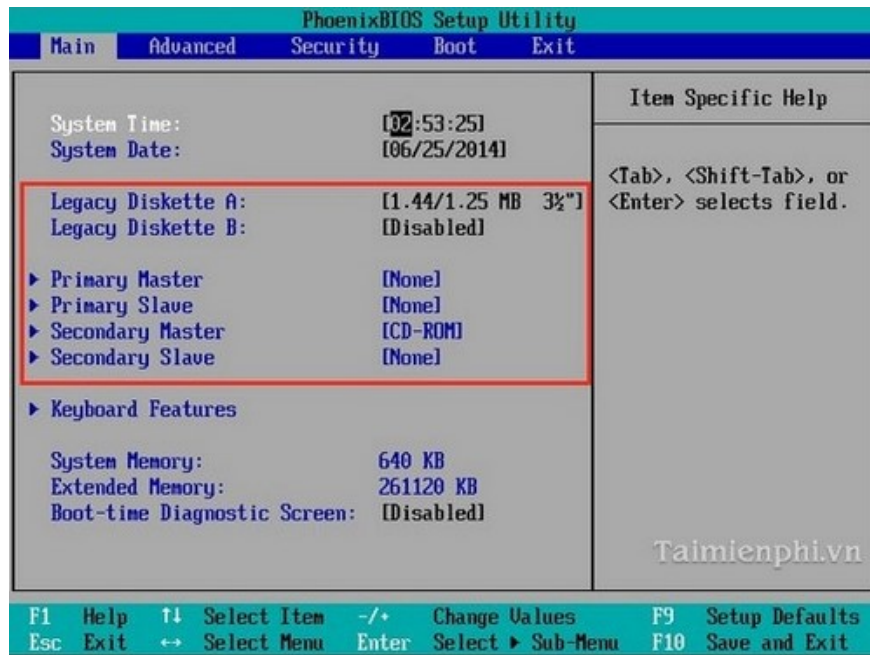
From the BIOS interface, you can access the Main tab first to edit this information . The **System Time** setting allows you to set the hour, minute, and second for the system, while **the System Date** setting allows you to set the day, month, and year for the system.



These settings help the system update the time more accurately, and you can enter this information in order from left to right or use the arrow keys to move to the position you want to change.

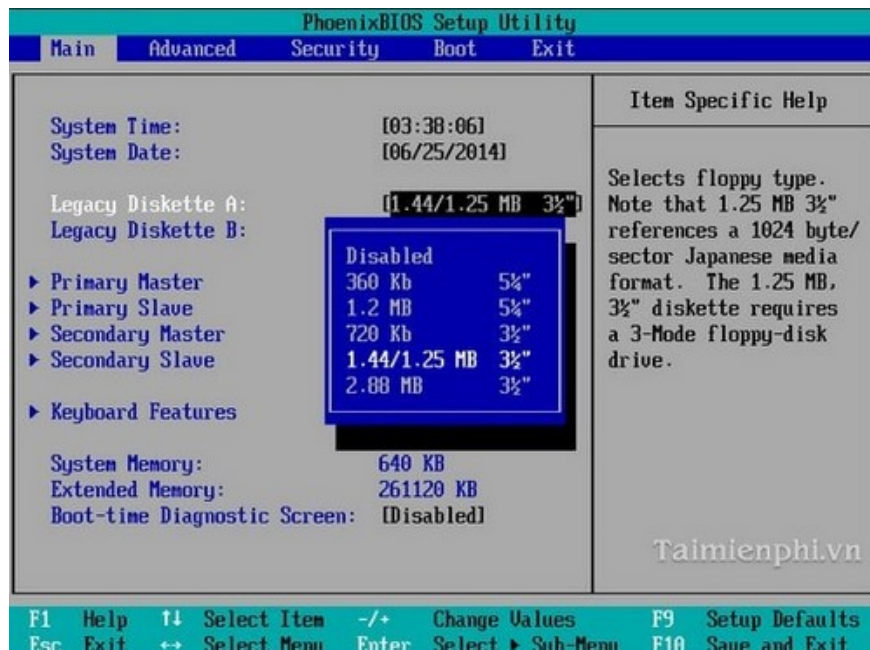
2. Set up the drive information.

Normally, the values for a hard drive are automatically set or customized by the system, but for some reason you might want your hard drive to operate according to your preferences to meet your needs.



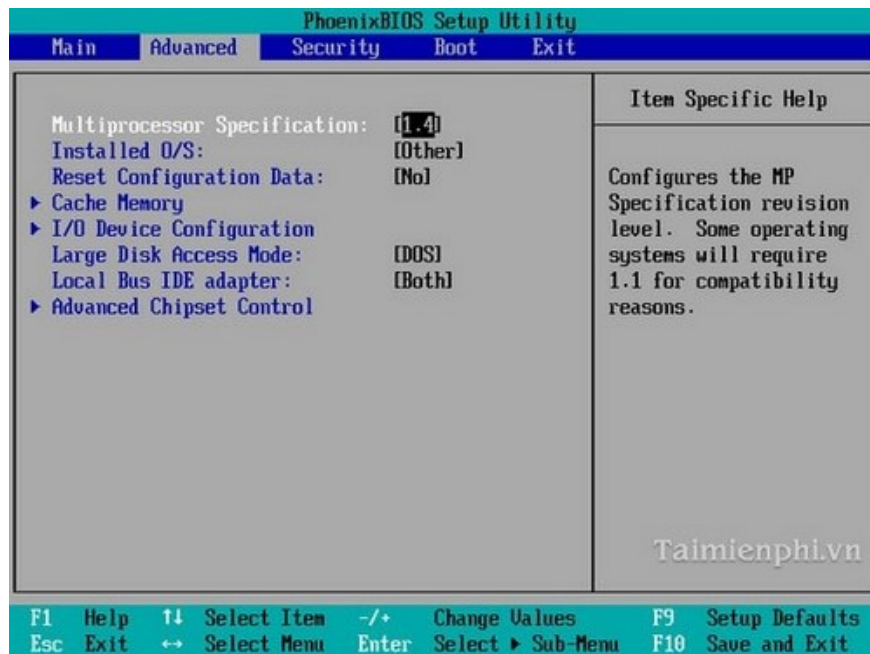
To change the rotational frequency of a specific drive, select it --> choose the desired rotational value for the drive, press **Enter** to accept. If you do not want the changes to be applied after the interface appears, press **ESC** to return .

- **Auto:** The BIOS automatically finds and checks for drive settings during startup.
- **None:** The BIOS skips this check, reducing startup time. This also allows locking or disabling the use of a particular drive.
- **Manual:** The user manually sets the drive settings.



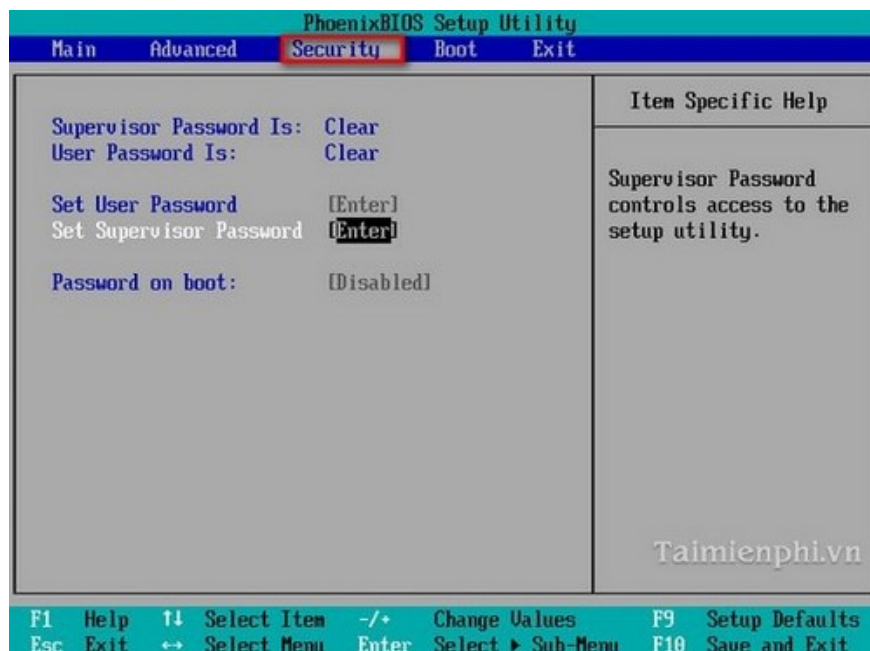
3. Configure the general settings of the computer.

The **Advanced** tab contains 8 configuration settings such as data configuration, memory caching mode, input/output mode, etc. Use the **up and down arrow** keys to move to the items you want to change, press **Enter** to accept, and press **Esc** to exit the current window.

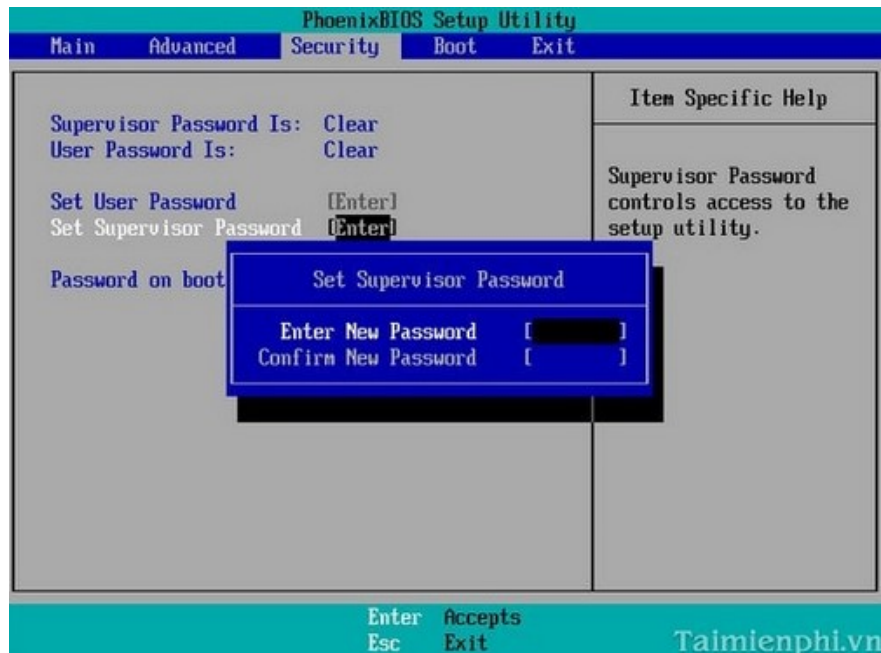


4. Set a password to protect your computer.

Besides setting a password for the operating system, you can also set a password for your computer right from startup to prevent unauthorized access if you don't want it to. To set a password from the BIOS, go to the **Security** tab and select **Set Supervisor Password** or select **Set User Password**.

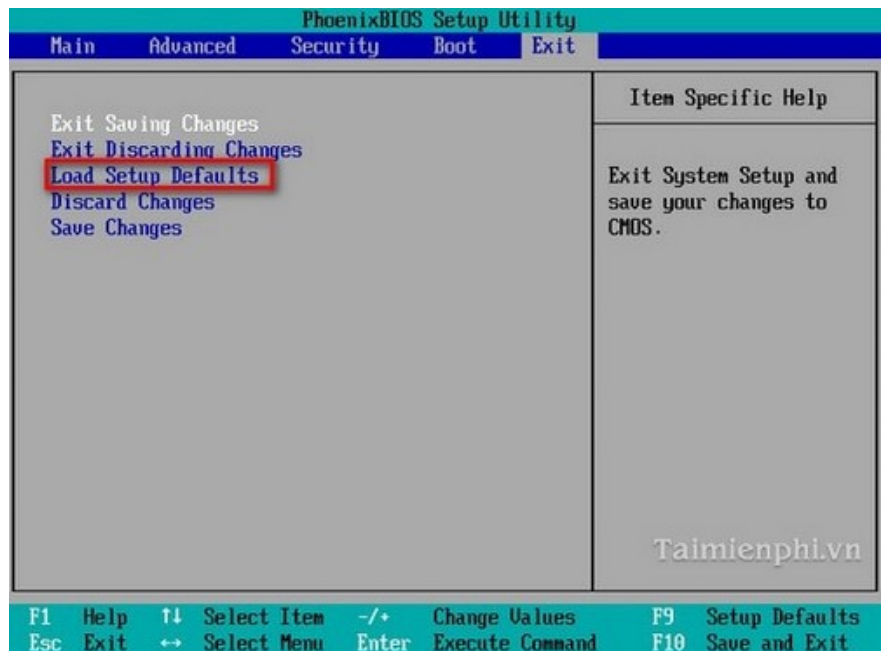


You can use the **Enter** key to display the dialog box and accept, or press **Esc** to exit the current dialog box.



5. *Reset system default values.*

After setting the system-wide values, if you encounter any difficulties restarting the operating system, you can go to the **Exit** tab to reload the initial values ??using the function in **the Load Setup Defaults section**.

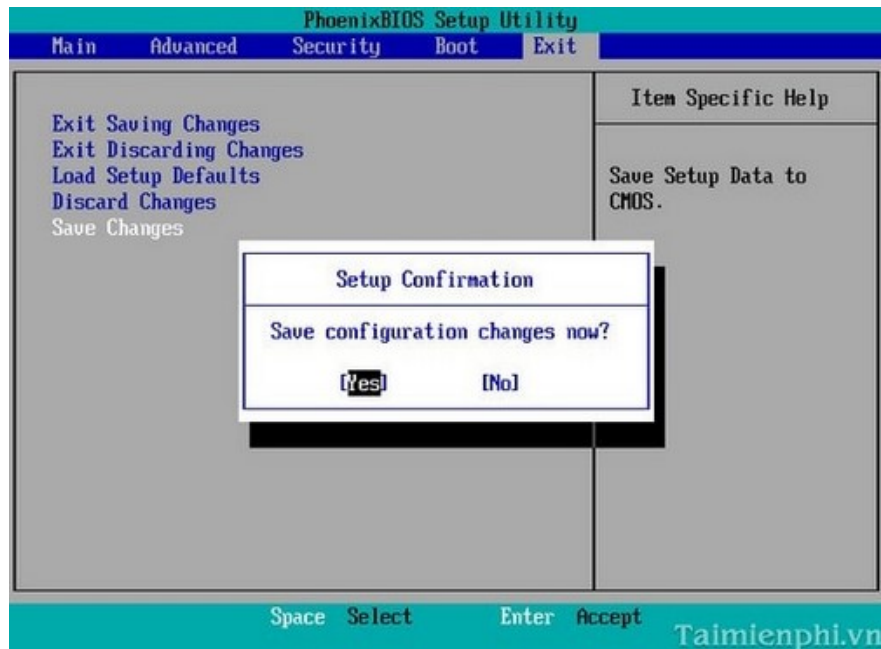


After you want to reload, the BIOS will display a confirmation message. Press **Enter** to accept or **Esc** to exit the current window.



6. Save the values ??after setting them.

After setting up one or more pieces of information, go to the **Exit** tab and select **Save Changes** to save the values.



Alternatively, you can use the **ExitSaveChanges** option to save the values ??and exit completely.



The above are steps to configure values ??in the BIOS that you can apply to your computer system for better performance. Additionally, you can adjust the BIOS to speed up computer startup.

You finished reading the article "**Set the basic parameters for the computer.**" edited by the [TipsMake](#) team. We hope this article has provided you with many useful tech tips and tricks. You can search for similar articles on tips and guides. Thank you for reading and for following us regularly.