

Set parameters for the computer's graphics device

Set parameters for the computer's graphics device

Graphics device (VGA) commonly known as a video card, helps to process and output the image signal to the computer screen, changing the parameters of this device will affect the display resolution, color, light, of the image.

Setting parameters for the graphics device

In Windows XP, there are ways to access the settings for the graphics device as follows:

1. **Start -> Control Panel -> Appearance and Themes (in Category mode) -> Display**
2. **Start -> Control Panel (in Classic mode) -> Display**
3. Right-click an empty space on the Desktop **and** select **Properties**

In **Display Properties** select Tab **Settings**, in this there are the following parameters:

Screen resolution



Display Properties

1. Set the screen resolution by dragging the slider to **Less** to decrease and **More** to increase the resolution.
2. When changing the resolution, pay attention to the screen shown in the center to recognize this change.

Notes when setting screen resolution

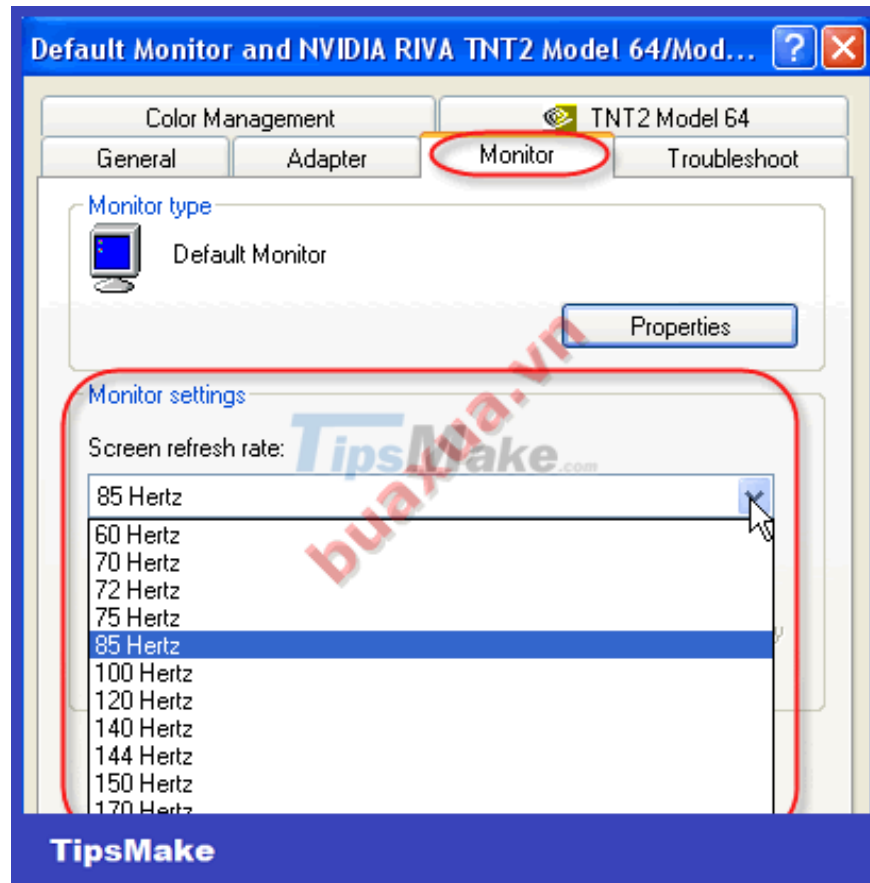
1. Setting the correct resolution will help users see clearly the images and text on the screen for convenience in using and controlling the program.
2. Depending on the size of the screen or the requirements of the program that sets the appropriate resolution, usually the appropriate resolution of 14' and 15' CRT screens is 800 by 600 pixels, of the **screen** . 17' and 19' are **1024 by 768 pixels** , the remaining sizes will depend on the screen that is set to suit the user.
3. For LCD screens, you must set the correct resolution to display the full screen.
4. Each screen has the maximum allowed resolution, if the resolution is changed too high, the screen cannot display the image, then just wait 15 seconds or press the Esc key, the screen will return to the way it **was** .

Color quality

1. Color quality, also known as color depth, is the number of colors that are allowed to be displayed on the screen, the larger the number, the more full and beautiful the image will be.
2. For older computers with weak graphics equipment, it should only be set to **Medium** (16 bit) mode to improve speed but still get beautiful images.

Extended parameters in the Advanced section

Screen refresh rate



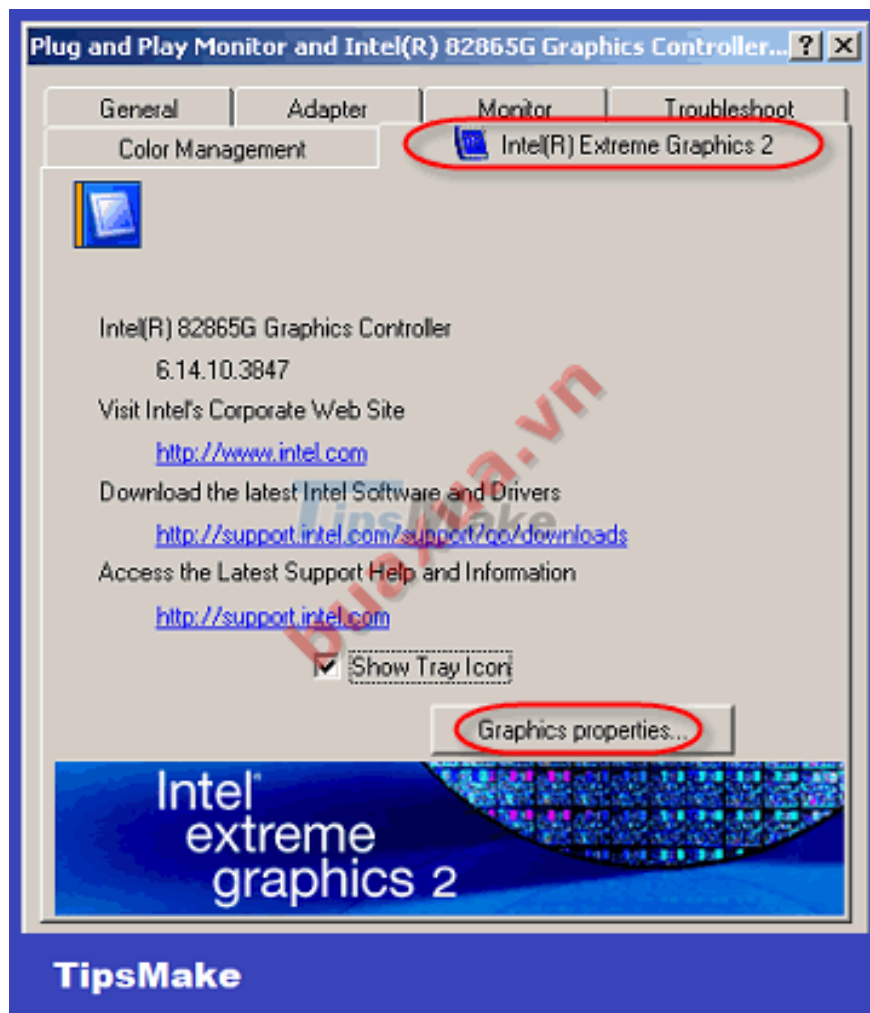
Screen refresh rate

1. Changing the refresh rate of the screen, high frequencies will help users not have eye strain when looking at the screen. However, be careful to increase it little by little as some monitors will not tolerate very high frequencies.
2. Each monitor can have different ranges of refresh rates, usually a scan frequency of about 85Hertz will be suitable for most screens.

Some graphics devices will have their own parameter settings section, which will allow you to set more parameters related to size, color, light and dark, . and rotate the image.

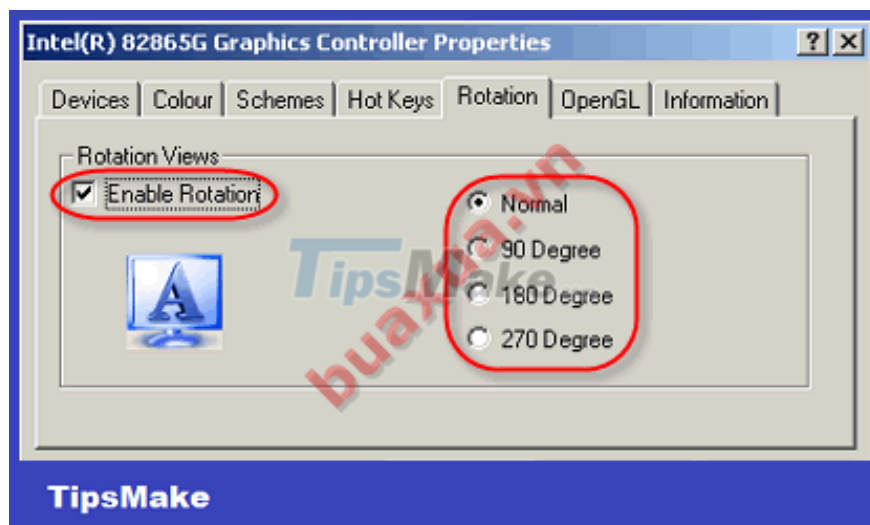
How to rotate images

1. In **Display Properties -> Advanced -> Select the name of the graphics device -> Graphics properties**



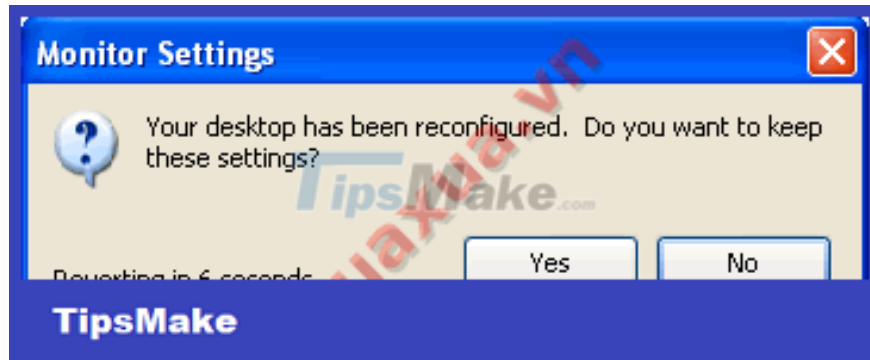
Graphics properties

1. Select the **Rotation** Tab and check the box **Enable Rotation** and select the rotation angles, **Normal** is normal (no rotation).



Check the box Enable Rotation to enable screen rotation

After setting the parameters, click the **Apply** button to apply immediately and check again, then click **Ok** to exit. In some cases, a screen will appear asking to confirm this change, this screen will automatically turn off after 15 seconds, press **Yes** to agree or **No** to return it to the way it was.



Click Yes to agree to rotate the screen

1. After setting the parameters for the graphics device, if the displayed frame on the screen is distorted or has the wrong size, use the buttons on the screen (Monitor) to correct it. (See instructions on How to use the CRT computer monitor)
2. For LCD Wide screens, the resolution must be adjusted exactly as indicated on the screen to obtain a clear and distortion-free image.
3. In some cases, setting the wrong resolution (too high) can make the screen not visible, now it is necessary to restart the computer in Safe Mode and then lower the resolution.

You finished reading the article "**Set parameters for the computer's graphics device**" edited by the [TipsMake](#) team. We hope this article has provided you with many useful tech tips and tricks. You can search for similar articles on tips and guides. Thank you for reading and for following us regularly.