

Set computer password, create password for computer and laptop

You want to increase security and avoid others from illegally 'invading' your computer, so set a computer password according to the steps below. But during the installation process, you should remember to stay in a private place or not let anyone see the password.

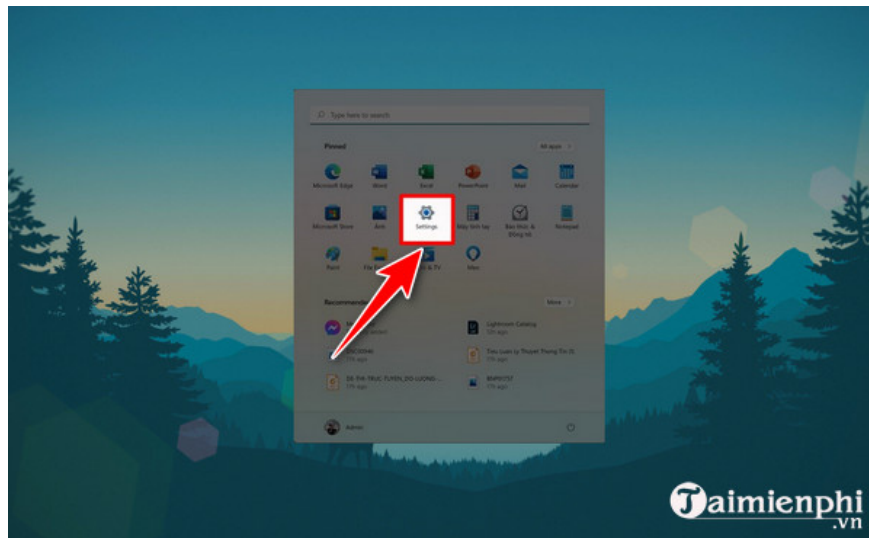
This article helps you : Set a password for your computer and laptop

Setting a computer password partly protects data from access by other users when you are absent. Previous article TipsMake also shared with you how

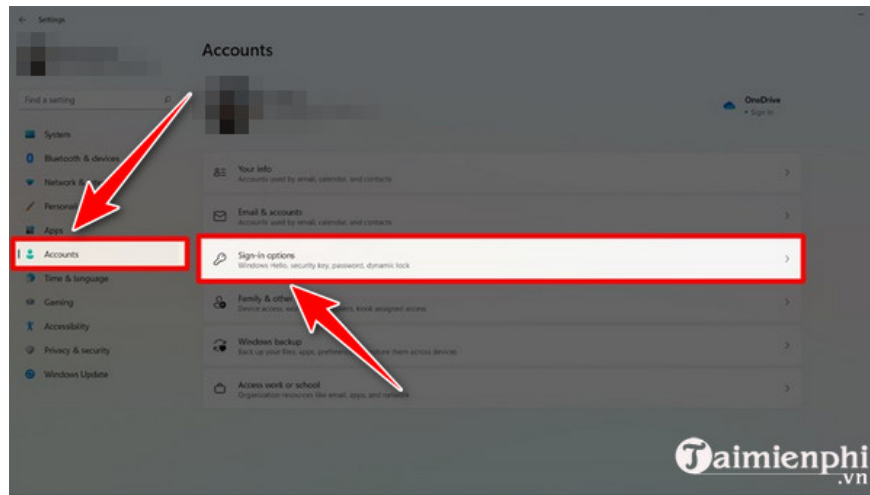
I. Set password for Windows 11 computer

Each version of Windows will have a different installation method. Below, TipsMake will guide you on how to set a password for your Windows 11 computer. Those of you who are using Windows can refer to it and do it easily.

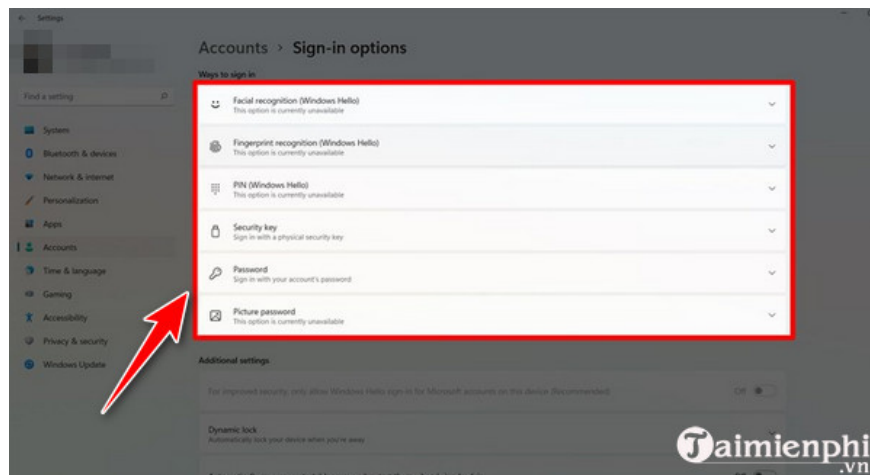
Step 1 : At the **Start Menu** , click "**Settings** " or press the key combination **Windows + i** .



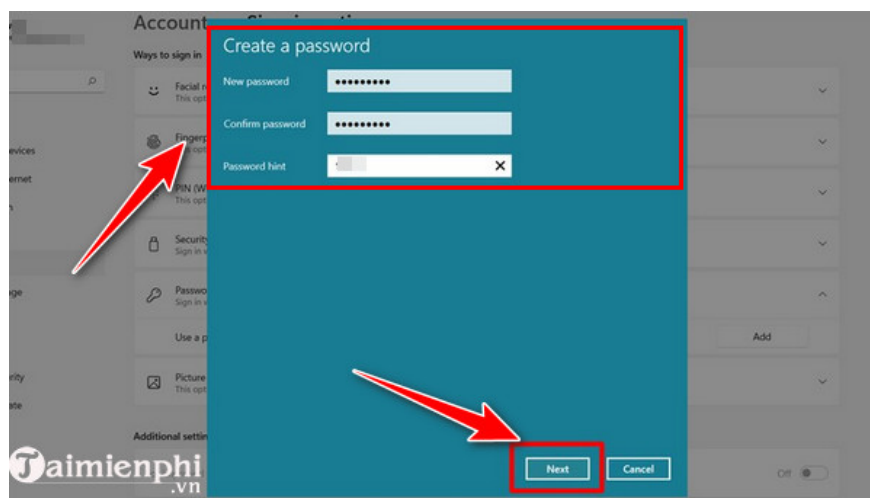
Step 2 : Select "**Account** " then press "**Sign-in options** " as shown below.



Step 3 : Here, you will see many security methods such as **facial recognition, fingerprint, pin code** . To set a password, select "**Password**" and then press "**Add**".



Step 4: Enter the password in the **New password box, confirm password** and enter **the password hint** in **Password Hint**. Then click "**Next**" then "**Finish**" to complete the installation.



II. Set a password for Windows 10 computer

Windows 10 is currently being used quite a lot, we have a detailed article on how to set a Windows 10 password, please refer to this article for details, how to **set a Windows 10 computer password** or see the instructions below. This.

Whether your account on Windows 10 is created as Local or connected to Microsoft Account or not, we can apply this method with the same operation.

1. Set a regular Windows 10 computer password

Step 1: Open **Start Menu** , click on your **account icon** > select **Change Account settings** .

Picture 5 of Set computer password, create password for computer and laptop

Step 2: In the **Settings** interface , go to **Sign-in Options** . Here there are 3 methods to help you set a Windows 10 computer password and we will go through all 3 of these methods in turn.

Picture 6 of Set computer password, create password for computer and laptop

Step 3: First is the most basic method, enter a regular password. Although it is the basic method of setting a Windows 10 computer password, it is what determines whether other methods are installed or not. Here we must enter the old password to log in to the computer first.

Picture 7 of Set computer password, create password for computer and laptop

Step 4: Then **enter the new password twice consecutively** and in addition, you can enter a password hint as a type of hint message when you forget your password.

Picture 8 of Set computer password, create password for computer and laptop

Step 5: Once done, click **Finish** to complete setting the password for this Windows 10 computer.

Picture 9 of Set computer password, create password for computer and laptop

2. Set a Windows 10 computer password with a PIN code

The advantage of a PIN code is that when you log in to Windows 10, just type in the correct system and the system will automatically let you in without having to press Enter.

Step 1: Still in **the Settings section** as shown above, click on **the PIN section** > select **add** and enter the password you are using on the computer.

Picture 10 of Set computer password, create password for computer and laptop

Step 2: Then set **up** a PIN code with all numbers. You can also select **Include letters and symbols** to add letters and special characters if you want.

Picture 11 of Set computer password, create password for computer and laptop

After the above operation, setting the Windows 10 computer password is completed.

3. Set a Windows 10 computer password with a picture

This mode has been around for a long time, but the way to set a Windows 10 computer password with a picture is not really useful because it is not convenient and the security method is easily copied.

Step 1: Still in that section, click **Add** in the **Picture Password** section .

Picture 12 of Set computer password, create password for computer and laptop

Step 2: Of course, you will have to enter your computer password first to be able to set a Windows 10 computer password with a picture.

Picture 13 of Set computer password, create password for computer and laptop

And the result is the interface of Picture Password.

Picture 14 of Set computer password, create password for computer and laptop

Step 3: Proceed **to Select picture** to change the default image of this feature.

Picture 15 of Set computer password, create password for computer and laptop

Step 4: Choose a photo you like best from your computer to set as the password screen.

Picture 16 of Set computer password, create password for computer and laptop

Step 5: Click **Use this picture** to confirm the use of that photo.

Picture 17 of Set computer password, create password for computer and laptop

Step 6: Here the mode will let you move the mouse 3 times as desired, remember these operations because it is your unlock operation.

Picture 18 of Set computer password, create password for computer and laptop

After each move, a faint arrow will appear to show how you moved. Note that the position is not fixed.

Picture 19 of Set computer password, create password for computer and laptop

Step 7: Then we must continuously confirm those 3 unlocking times in the next section to make sure we don't forget after setting.

Picture 20 of Set computer password, create password for computer and laptop

Step 8: When the Congratulations message appears, setting a Windows 10 computer password with a picture has been successful.

Picture 21 of Set computer password, create password for computer and laptop

III. Set a Windows 8/8.1 computer password

Since the release of Windows 10, Windows 8.1, especially Windows 8, has been updated to Windows 10. If your computer still has this version of Windows installed, how to set a password for Windows 8.1/8 with 3 simple steps below.

Step 1: Press the key combination **Windows + I** then click **Change PC Settings**

Settings

Desktop

Control Panel

Personalization

PC info

Help



Available



2



Brightness



Notifications



Power

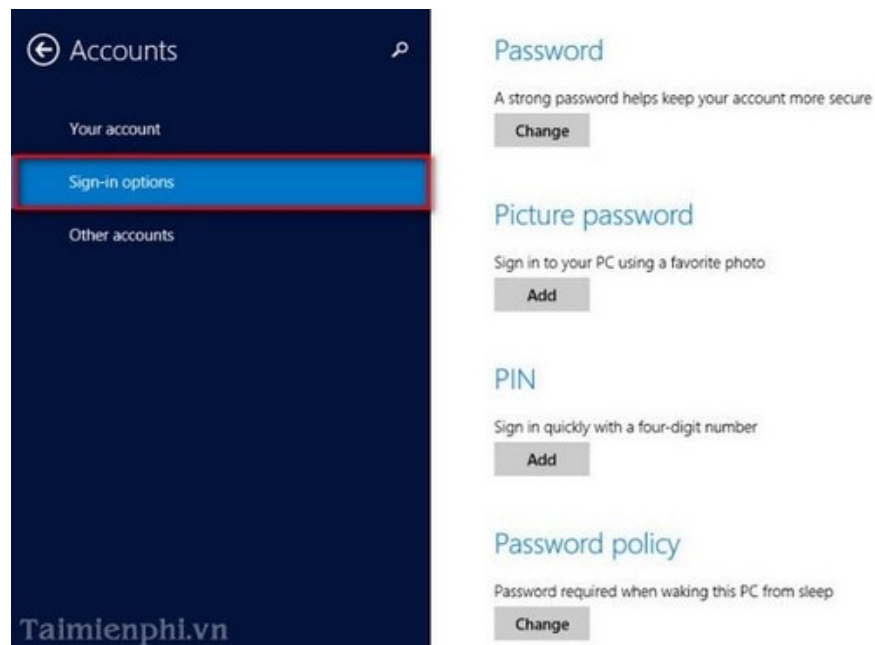
ENG

Keyboard

Taimienphi.vn Change PC settings

Set computer password win 8

Step 2: select **Sign-in options** then select **Add** or **Change** to create or change a password.



Create windows 8 computer password

Step 3: Here you enter **the password** and confirm the Password then click **Finish**



Create Windows 8 computer password

IV. Set Windows 7 computer password

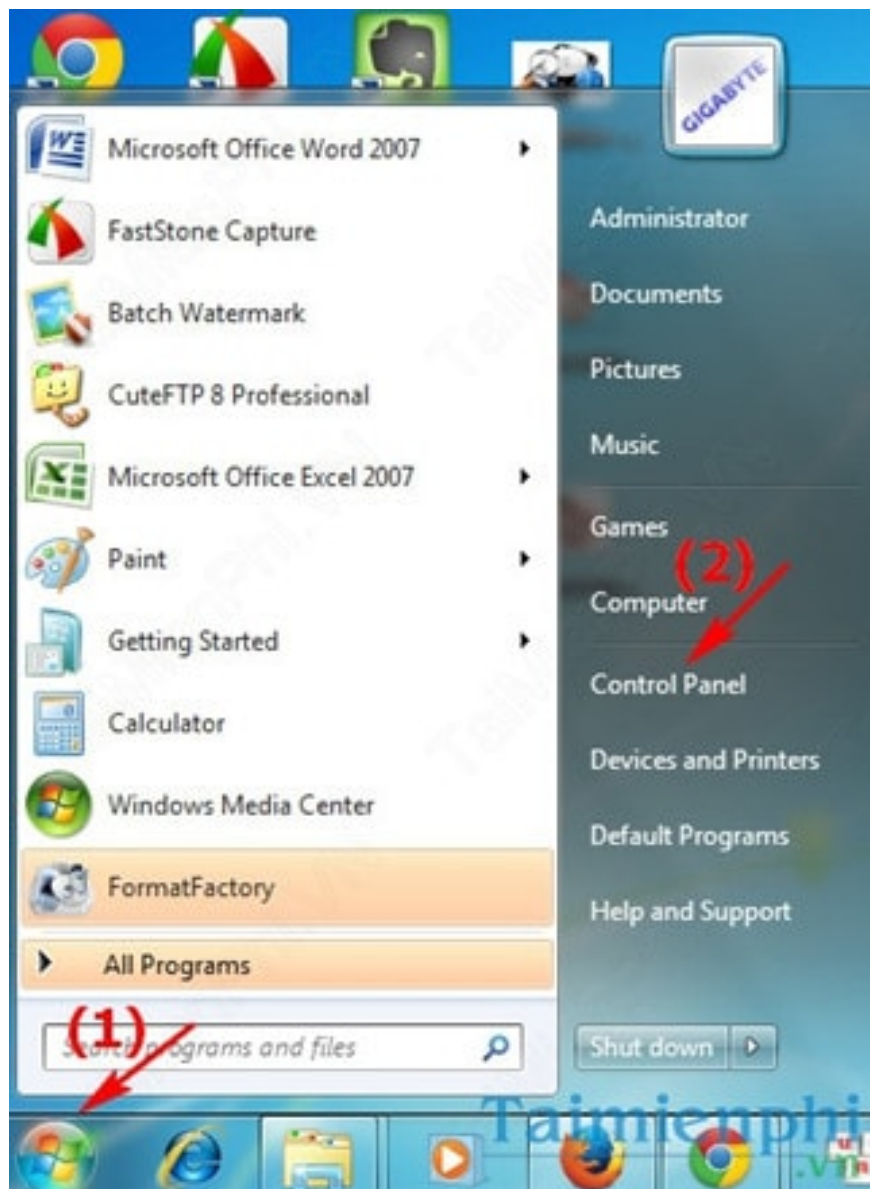
Step 1: Access Control Panel

Method 1: Press the key combination **Window + E** then type **Control**

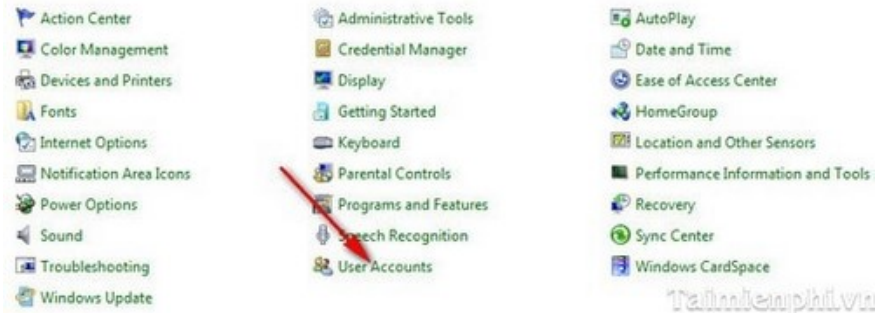


Set computer password for Windows 7

Method 2: Click the Start button and select Control Panel



Step 2: On the Control Panel interface , select View by: Larger icon , then click User Accounts



Set computer password for Windows 7

Step 3: If your computer has multiple accounts set up, click on the account that needs to change the password, select **Change Your Password** or **Create new Password** if you have not set a password for the device.



Create Windows 7 computer password

Step 4: Enter information such as current password, new password and confirm new password. then click **Change password**



Set computer password win 7

So you have just performed the task of **Setting a Windows 7 computer password** as well as changing the Win 7 password

So you know how to set a computer password for Windows 7, Win 8 and Windows 10. With this trick, your computer is upgraded to another level of security and you won't have to worry about data being stolen. in computer. Not only setting passwords for desktop computers but also laptops is always given priority.

Above is how to set a computer password. After using it for a while, you may have to change the computer password to change the password that has been set for a long time to better secure the computer. Refer to how to change the password. computer password on Windows 11, Windows 10, 8 versions to know how to do this

See more: How to set a Windows 11 computer password

In addition, when using a computer, the wallpaper is always the place you see the most. To avoid having to look at the default Windows wallpaper, you can completely change the computer wallpaper to other, beautiful images. more and more unique, with each version of Windows there are different ways to change the computer wallpaper.

Taking photos of computer screens is no longer strange to users. Previously, few users used the computer screen capture feature, but with the development of current technology, supporting software is available. Taking screenshots was developed to help users better capture desktop activities.

If you are using a computer at work or your computer is shared by many people, setting a computer password is extremely necessary to secure information and data on the computer. Only people you authorize can log in and use your computer. This TipsMake article will guide you how to install and change passwords on Windows operating systems.

Taimienphi.vn also provides additional instructions on how to update Windows 11 drivers to help readers who want to update Windows 11 drivers to update quickly.

You finished reading the article "**Set computer password, create password for computer and laptop**" edited by the [TipsMake](#) team. We hope this article has provided you with many useful tech tips and tricks. You can search for similar articles on tips and guides. Thank you for reading and for following us regularly.