

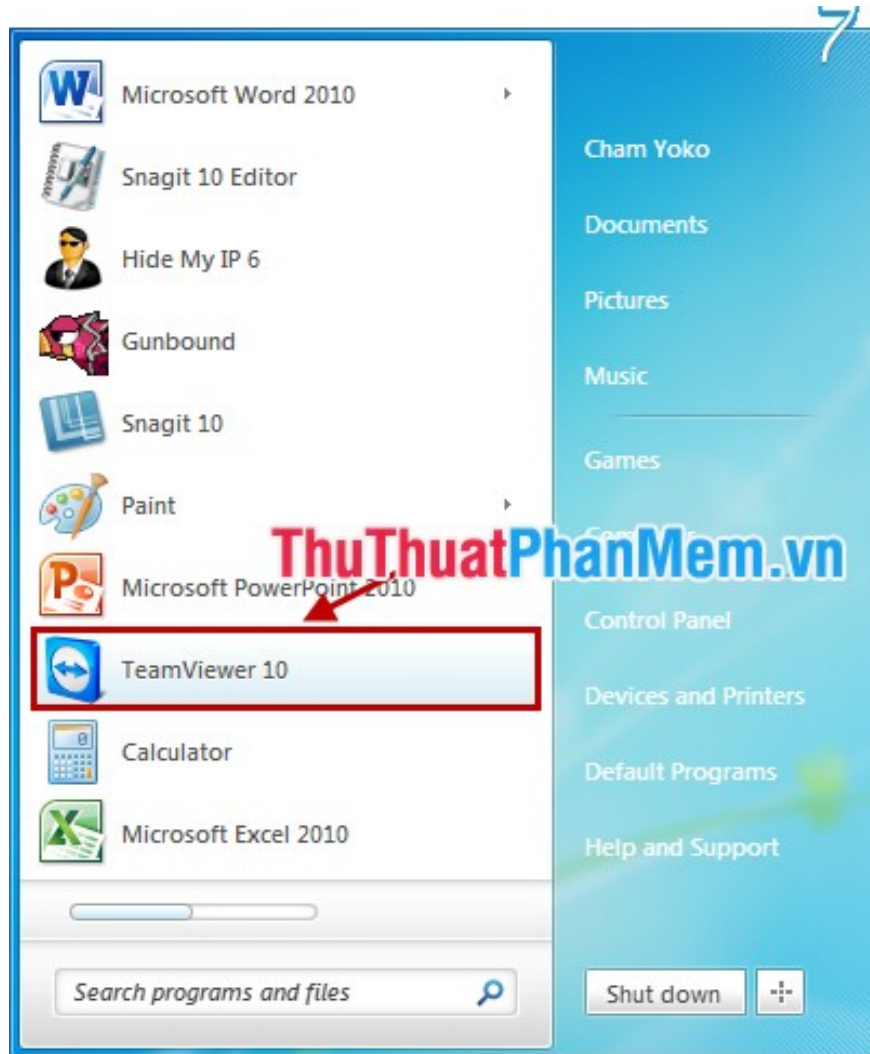
Set a password for Teamviewer - Set a password for Teamviewer

By default, in TeamViewer, every time you start the application, the application will give a different password. But for many people with certain uses they want to set a password for TeamViewer.

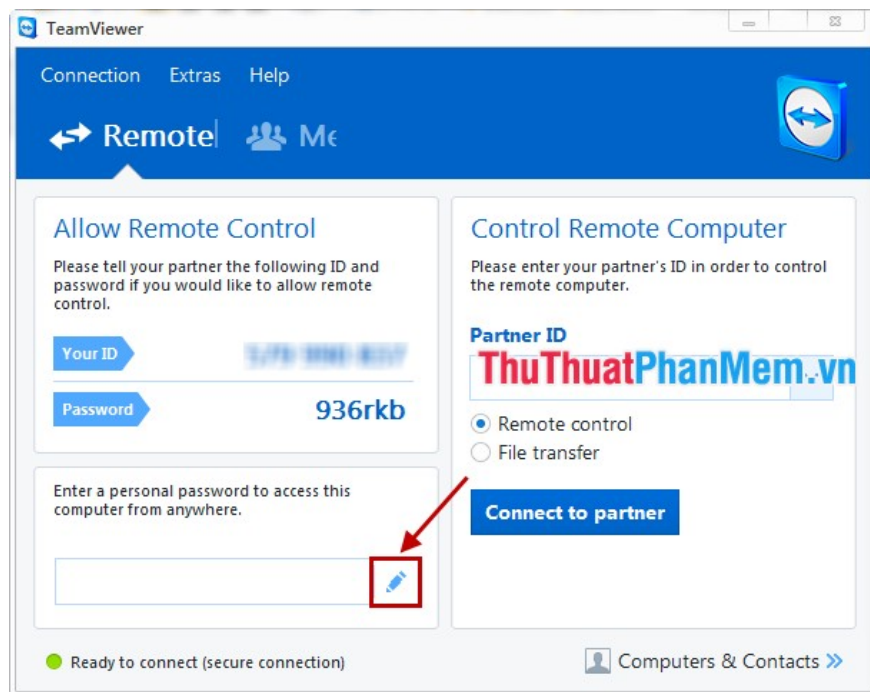
By default, in TeamViewer, every time you start the application, the application will give a different password. But for many people with certain uses they want to set a password for TeamViewer.

The following article shows you how to set a fixed password in TeamViewer, invite you to track!

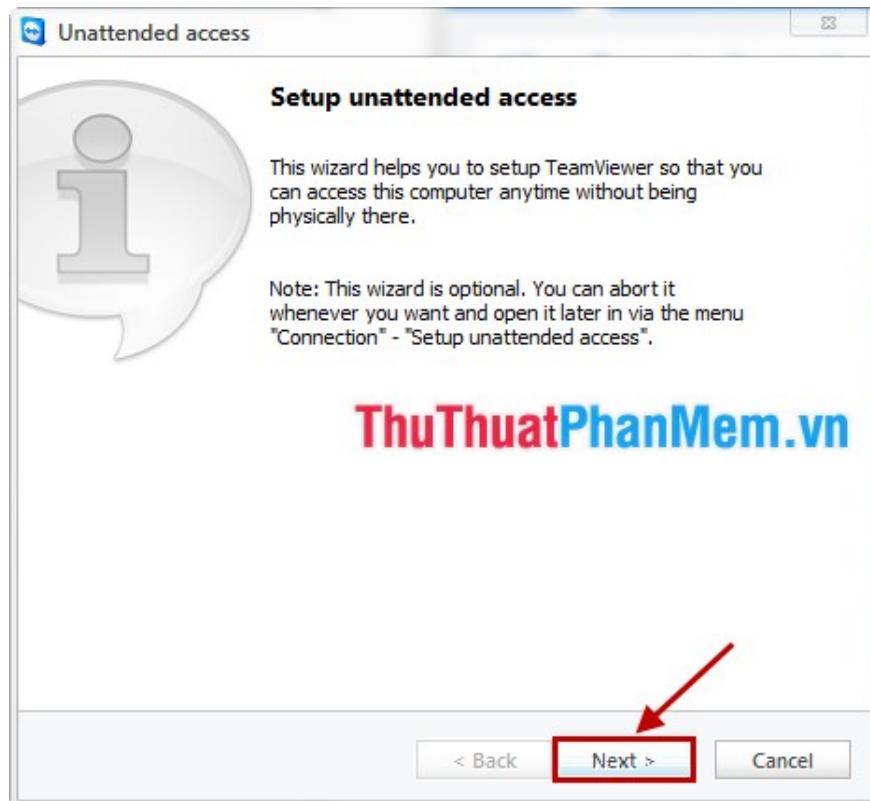
Step 1: Launch TeamViewer.



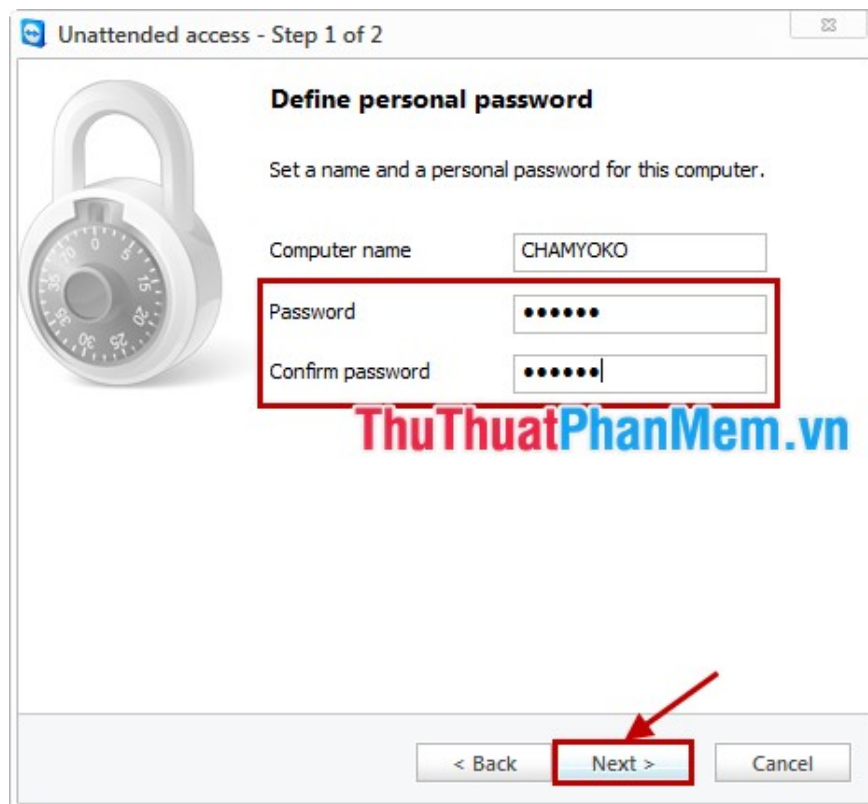
Step 2: On the interface of TeamViewer, select the icon as shown below in the *Use your personal password to access this computer from anywhere* (*Use your personal password to access this computer from anywhere*).



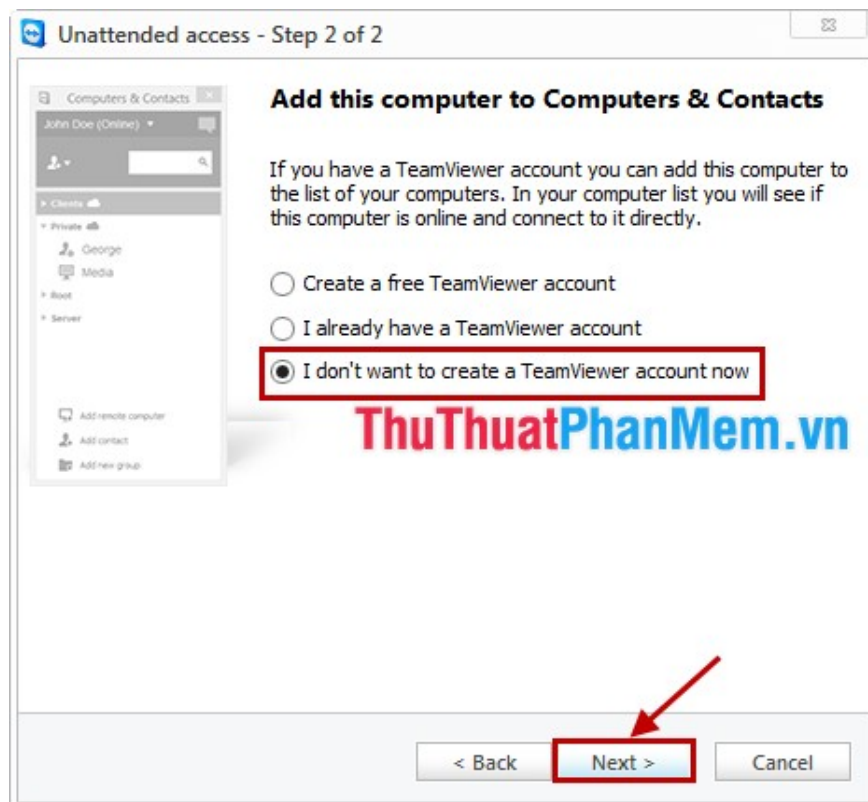
Step 3: A small interface appears, select **Next** .



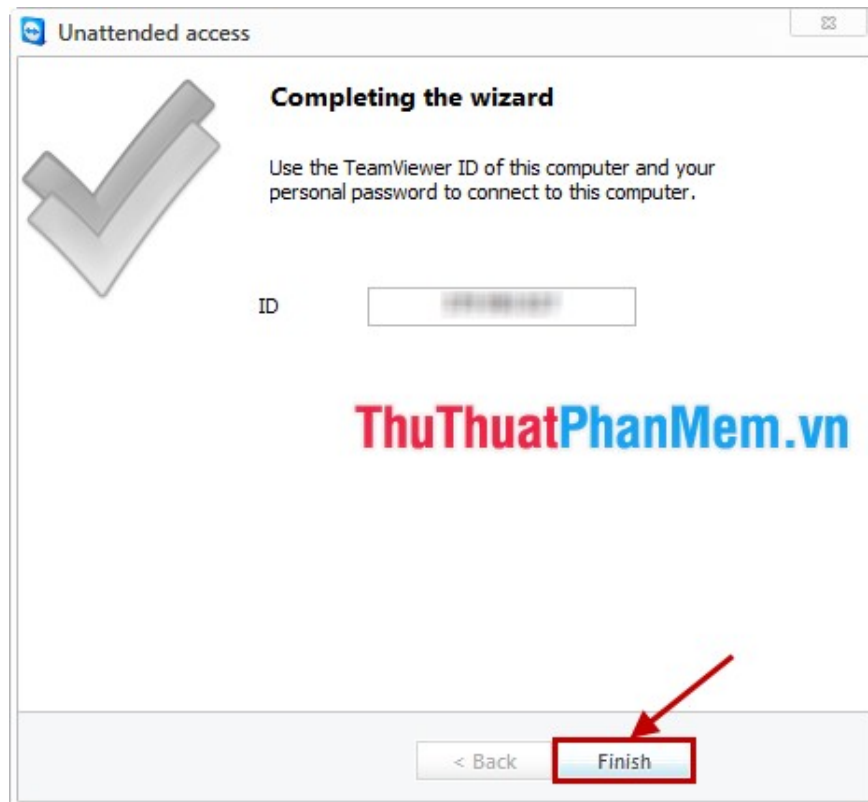
Step 4: In **Define personal password** you enter the fixed password into the **Password** box and re-enter the password in the **Confirm password** box . Then click **Next** .



Step 5: Choose *I don't want to create a TeamViewer account now* and click **Next** .



Step 6: Click **Finish** to complete.



The article showed you how to set a fixed password in TeamViewer, from now on you only need to remember the password you set in step 4 along with TeamViewer's IDs that other computers or mobile devices can link to. Connect to your computer. Good luck!

You finished reading the article "**Set a password for Teamviewer - Set a password for Teamviewer**" edited by the [TipsMake](#) team. We hope this article has provided you with many useful tech tips and tricks. You can search for similar articles on tips and guides. Thank you for reading and for following us regularly.