

Self-practice Wireless for free

In this article, we will guide you to wireless network configuration steps completely free with Cisco Packet Tracer.



TipsMake.com - Today, wireless networks have become quite popular. Not only in organizations and businesses, wireless networks are also deployed in most cafés, restaurants, and hotels . Many families also have wireless devices to serve the Internet sharing needs of home computers and other jobs. Therefore, wireless network configuration skills have become very necessary. But how can I configure the wireless without buying wireless transmitters (Access Points)? In this article, we will guide you to wireless network configuration steps completely free with Cisco Packet Tracer.

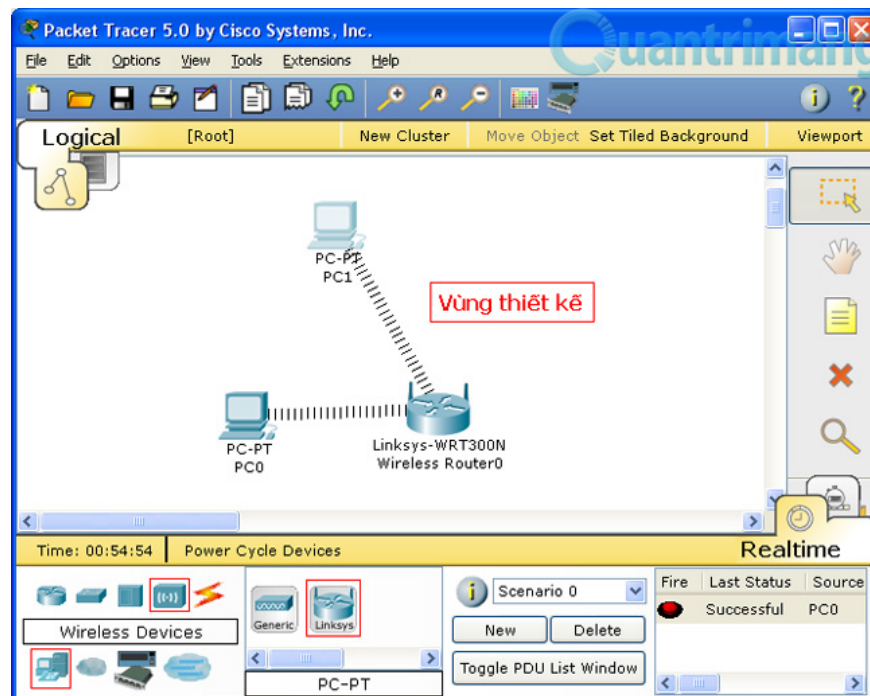
1. Download and install Packet Tracer (PT) setup software

First, download the free PT software: download Cisco Packet Tracer 6.0 [here](#). Once completed, double-click on the file just to install the PT on your computer.

2. Design wireless network

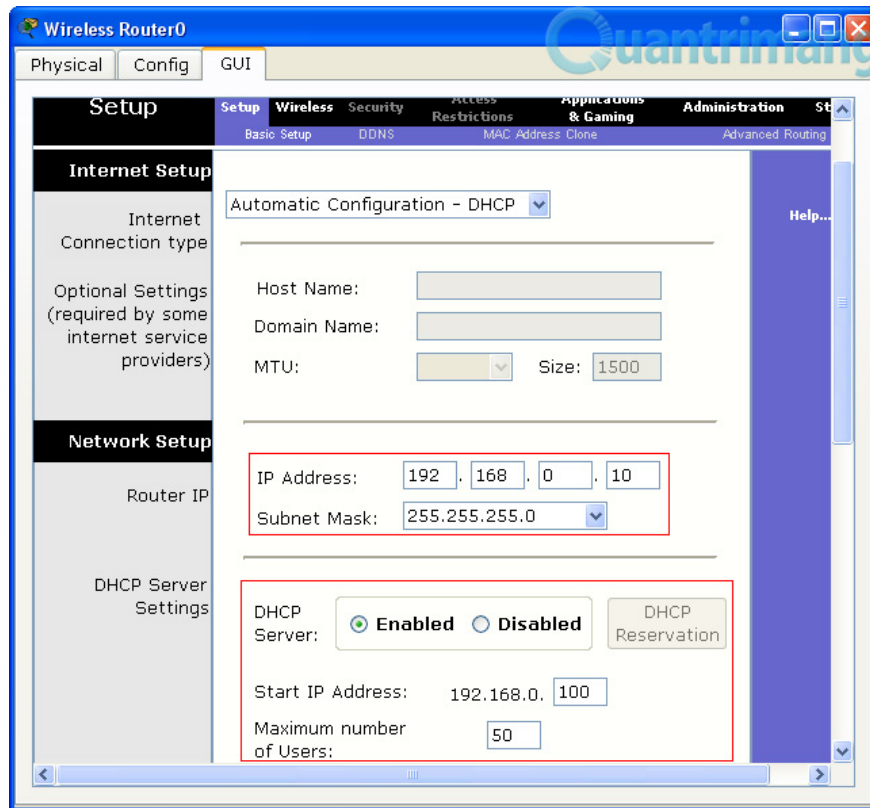
Before configuring, you need to design a wireless network diagram. Here, go to **Start** menu > **Programs** > **Packet Tracer 5.3** , select **Packet Tracer 5.3** to open the working screen of PT. In the frame containing the devices in the lower left corner, you select the wireless device (Wireless Devices). In the corresponding right pane, you select an Access Point to configure (this is a wireless broadcast device, simulated on PT software). After you have finished selecting, drag your mouse over the design area and click your mouse. Again to place the object in this area.

Similarly, you continue to select the terminal type (End Devices). In the corresponding right pane, select the PC by clicking **Generic** and placing the computer on the design area. You can place one or more computers at your disposal.



3. Wireless configuration

After you have completed the design, click on the Access Point object (Linksys WRT300N) in the design area to start the configuration. On the *Setup* tab, in *Basic Setup* , enter the IP address and network mask for the Access Point in the **IP Address** and **Subnet Mask** section . Next, you can configure Access Point to provide dynamic IP addresses for the clients (wireless clients) in the network by selecting **Enabled** in the DHCP Server section, and entering the IP address starting in the **Start IP Address** field . To provide a dynamic IP address for up to many computers, you enter the **Maximum number of Users** section .

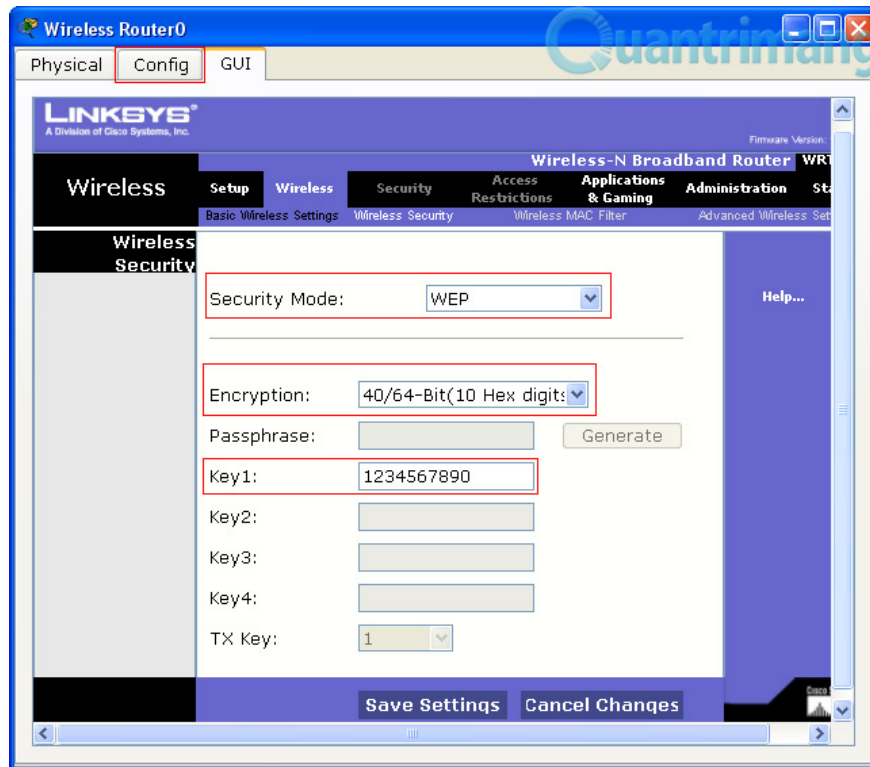


On the tab, *Wireless* , at *Basic Wireless Settings* , enter the wireless network name in the **Network Name (SSID) section** , for example: *HoangHac Cafe* . This is the name used by the workstations to connect to the wireless network.

Next, at *Wireless Security*, you can choose one of the security mode configuration:

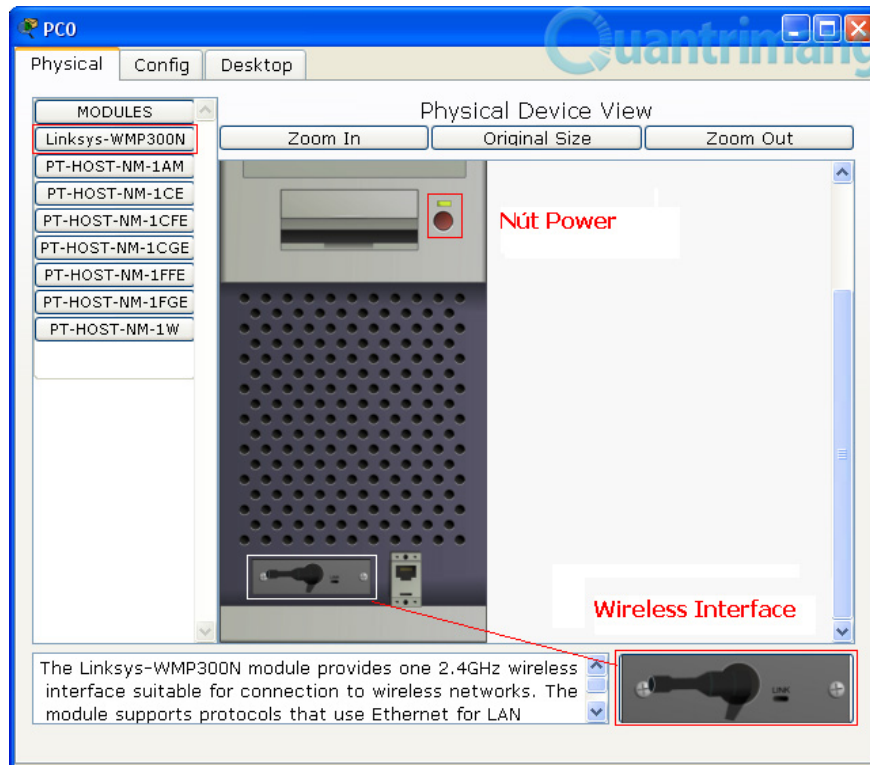
- If with free wireless access (coffee, restaurant, hotel .), in **Security Mode** , select **Disabled** .
- If you need to access the lock when accessing, in the **Security Mode** , select the appropriate security method. After that, you proceed to fill the key.

Once done, click the **Save Settings** button to save the settings made.

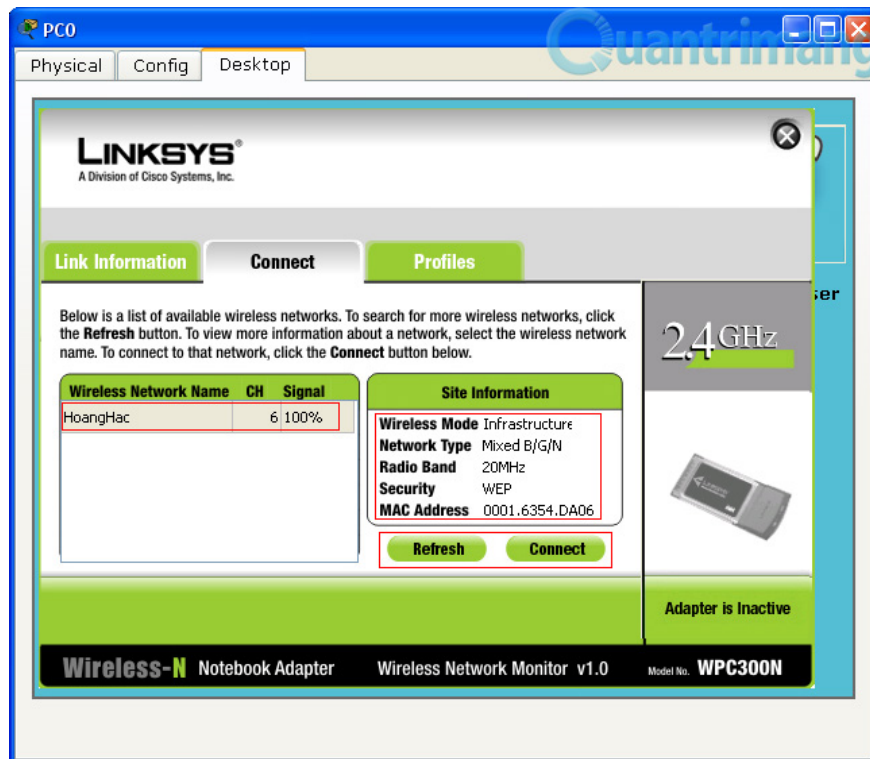


Note : if you cannot enter this step, select the Config tab. In the left pane, select the Wireless tab. In the corresponding right pane, enter the key in the Key section .

At this point, you have finished configuring the broadcast device. The next step is to use the workstation to connect to the wireless network. To do this, in the design area of ??PT software, click on the PC. On the **Physical** tab, in the left pane, click **Linksys-WMP300N** . Next, click on the **Power** icon to turn off the PC. Next, click on the wireless interface icon in the lower right corner and drag to the corresponding location on the PC.



Next, on the Desktop tab of your PC, click **PC Wireless** . On the *Connect* tab, click the **Refresh** button to display the information of the configured Access Point. At this point, click the **Connect** button. If you have security settings, enter the key set up on the Access Point in the next step and click the **Connect** button again.



After this step, the PC (including the wireless card) has successfully connected to the Access Point you just configured. Please execute the ping command from the PC to the Access Point address to check.

Thus, with Packet Tracer software, you can completely practice the skill of configuring a complete wireless network without having to purchase any device.

You finished reading the article "**Self-practice Wireless for free**" edited by the [TipsMake](#) team. We hope this article has provided you with many useful tech tips and tricks. You can search for similar articles on tips and guides. Thank you for reading and for following us regularly.