

Self-blackening error in Word and Excel, how to handle?

Self-blackening error in Word and Excel is a common case. This problem causes many problems during the user's work process.

Self-blackening error in Word and Excel is a common case. This problem causes many problems during the user's work process. TipsMake has researched and will help you fix errors immediately with simple tricks.

During text editing or working with Excel, users need to highlight some content to mark and highlight that paragraph. **But the self-highlighting error** problem in Word and Excel is different. Because this is 'automatic' and not operated by the user, it will definitely bring discomfort, making your text/Excel not beautiful or error-prone. Therefore, **TipsMake** will guide you in detail how to fix this situation.



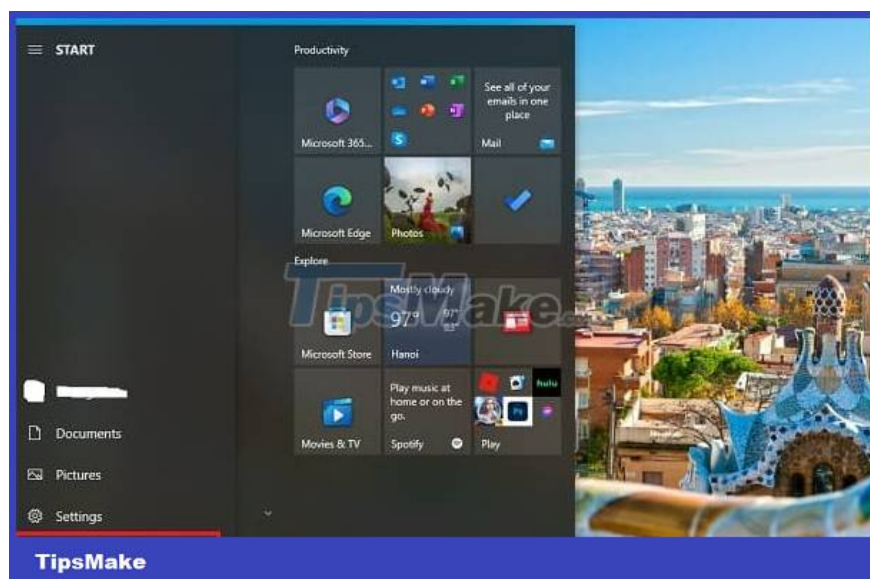


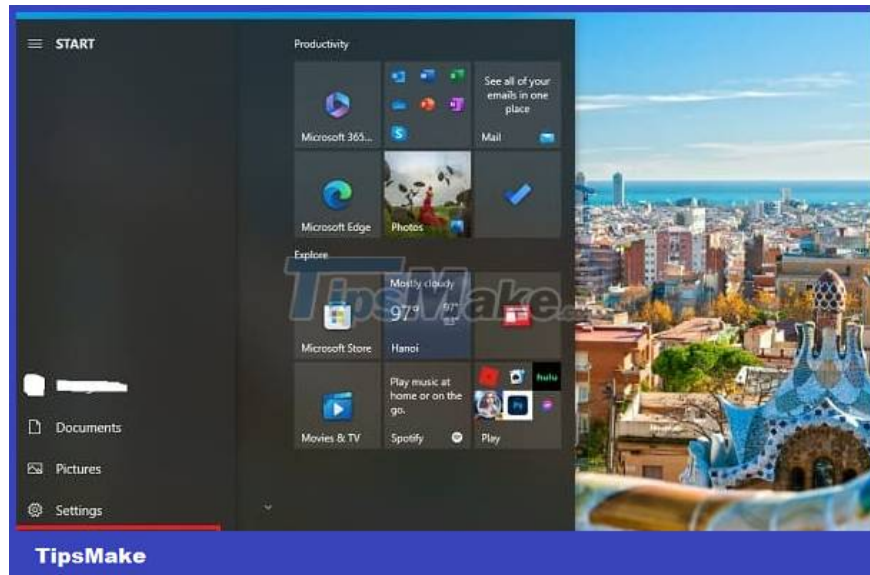
Learn how to fix self-highlighting errors in Word and Excel simply and effectively

Self-blackening error in Word/Excel is a common problem, but not everyone knows how to solve this problem. In fact, there are many 'culprits' that cause errors. It could be due to outdated Word/Excel, corrupted Word/Excel resources, problems with the mouse or touchpad on the laptop, for example. Here are some measures you should apply to handle this situation.

1/ Restart the computer

As usual, the admin will offer the first solution when the user encounters any problems with the active application: restart the computer. Because it is possible that the mouse operating abnormally and automatically blacking out is just a temporary problem. Therefore, turning off the power and restarting will help fix these cases for unknown reasons.





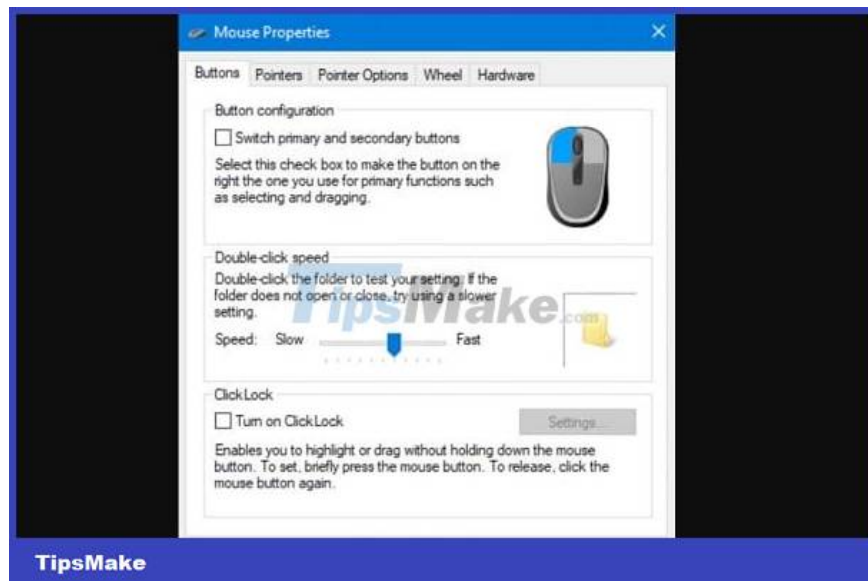
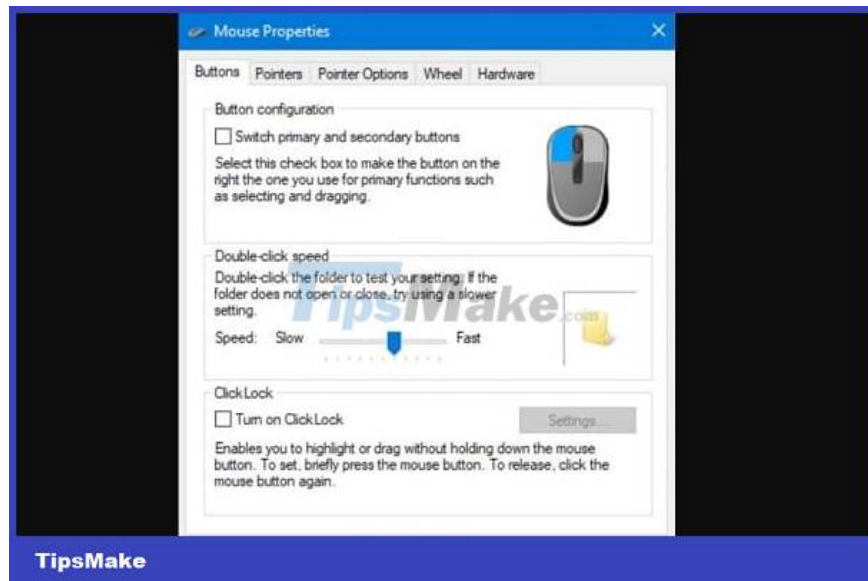
2/ Turn off extended selection (Extended Selection)

If you have extended selection enabled, this may be the cause of auto-highlighting in Excel. Because the extended selection function will allow you to select a series of cells at once. To check, you can look at Excel's status bar. If you see the message Extend Selection ' **Extend Selection** ', it means this mode is turned on. At this point, you just need to press **F8** to turn it off and you're done.

3/ Disable Windows Click Lock

The way to fix the self-highlighting error in Word 2010, other versions or Excel is to turn off Click Lock mode. This is a Win feature that helps users highlight or drag into any application without holding down the mouse button. Therefore, it also makes the machine automatically highlight when editing or working on Excel.

Just click on the search icon on the taskbar (or click on the Start button) > Search for **Mouse Settings** and open it > Click on the **Related Settings** tab and select **Additional Mouse Options** > **At the Buttons** tab , uncheck the box. in the **Click Lock** box .



4/ Update Word or Excel applications

The error of the mouse automatically blackening many cells in Excel/Word may be due to some error in the current version you are using, which is why the problem of self-highlighting occurs. Therefore, you should check and update Excel/Word to the latest version if available. If it still doesn't work, try uninstalling and re-downloading the Word/Excel software.



5/ Check hardware

Not only are there software causes, the blacking error on the computer is also likely due to the laptop's mouse or touchpad. Therefore, try checking to see if the left mouse button is stuck, if the mouse is broken or not? Or try using another mouse to make sure the cause is not due to hardware.

Share more: How to remove black squares in Word

1. **Step 1** : Place the flashing mouse cursor behind the black box.
2. **Step 2** : Press the left arrow key to select the entire black box and the box will now turn gray.
3. **Step 3** : Press the key combination **Ctrl + Shift + S** > When the dialog box displays, click **Reapply** .



Self-blacking errors in Word and Excel are extremely annoying to users. TipsMake hopes that the above measures will help you fix the problem!

You finished reading the article "**Self-blackening error in Word and Excel, how to handle?**" edited by the [TipsMake](#) team. We hope this article has provided you with many useful tech tips and tricks. You can search for similar articles on tips and guides. Thank you for reading and for following us regularly.
