

# See this series of aerial photos to see how the world has changed dramatically because of COVID-19

The series of comparative pictures taken by SkyStat satellite of Planet Labs Inc will give us the incredible difference of the world when social isolation measures are applied.

In the context that the COVID-19 epidemic is still spreading at a dizzying pace throughout the world, many countries have applied blockade measures, requiring people to stay indoors and limit their outings. The series of comparative pictures taken by SkyStat satellite of Planet Labs Inc will give us the incredible difference of the world when social isolation measures are applied.





The scene was crowded on the bridge on January 12, and the complete disappearance of the car after the city of Wuhan was blocked.

A photo of a bridge over the Yangtze River in Wuhan City was taken on January 12, 2020, just one day after China had its first death from COVID-19. At the time the second photo was taken on January 28, Wuhan was officially completely blocked. China then recorded 17 deaths from COVID-19. Meanwhile, neighboring Asian countries and the United States have also reported cases of infection, suggesting that the disease has spread out of the world's most populous country.





Temporary restrictions on visits and prayers around the Al-Masjid al-Haram mosque have been implemented, leaving the area unoccupied in a photo taken on March 10, 2020.

Aerial photographs of Al-Masjid al-Haram mosque in Mecca, Saudi Arabia - the most sacred place of Muslims. "The heart of Mecca is a mysterious black building, called Kaaba (Cube). This is the first place in the world to be used as a place of worship for Muslims, considered" Home of Allah. 'Every year, millions of Muslims come here to pray.

The first photo taken on January 25, 2020 shows a large number of devotees gathered around the center of the sanctuary. However, on February 27, 2020, the Saudi government decided to completely close the border with pilgrims from other countries. At the same time, the country has also introduced temporary restrictions on visiting and praying around Al-Masjid al-Haram, leaving the area unoccupied in a photo taken on March 10, 2020. .



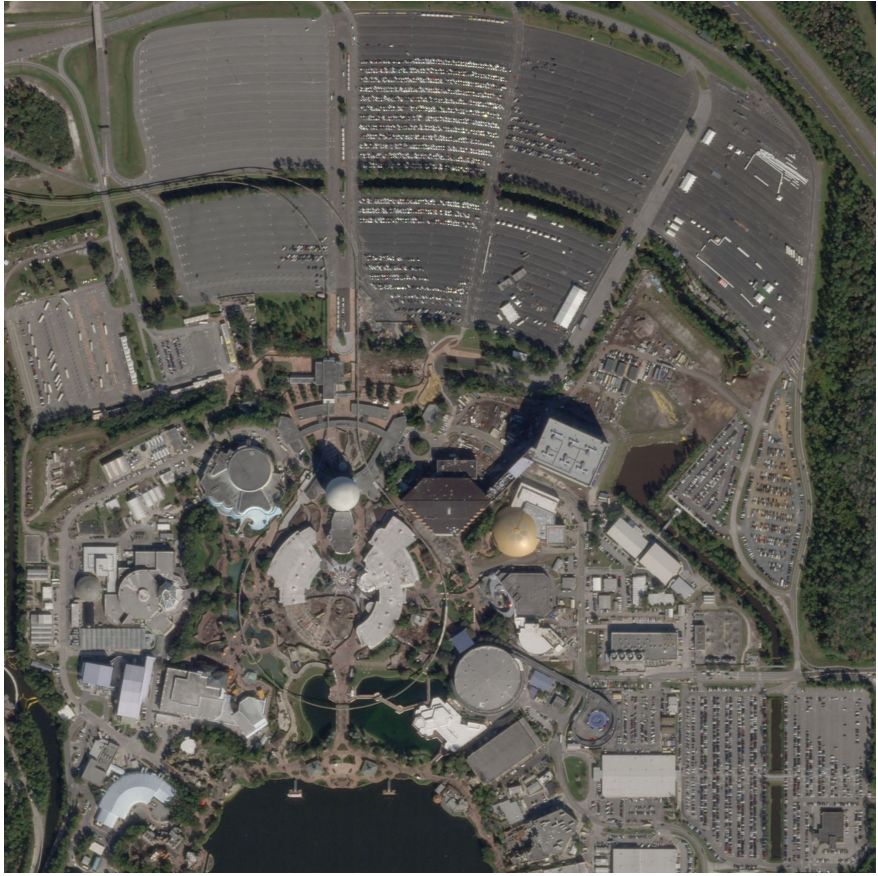


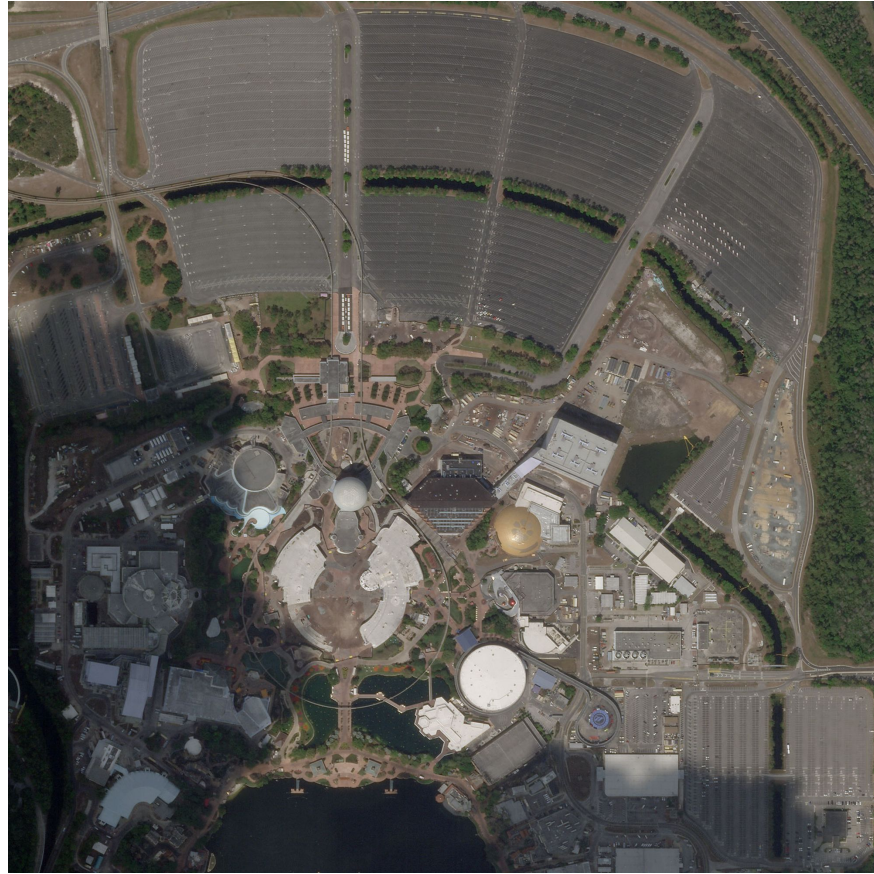
Many Venetian residents assert, the absence of tourists makes the canals quieter and more calm

Italy is currently one of the European countries most affected by the COVID-19 epidemic. According to statistics as of March 26, the country has 74,386 infections, and 7503 deaths - the most in the world.

In the aerial photograph taken on October 20, 2019 - a time when the COVID-19 epidemic had not yet appeared, the bustle in Venice was noticeable as a large number of boats were constantly moving at sea. As one of the tourist centers of Northern Italy, the city welcomes a large number of international visitors every year.

However, things have changed dramatically in the picture taken on March 18, the moment Italy has applied a blockade order across the country. Many Venetian residents assert, the absence of tourists makes the canals in this city quieter and quieter.





Quiet scenery at Epcot Center theme park, after the park management issued a temporary closure notice on March 16

Located in Bay Lake, Florida, USA, the Epcot Center theme park is a part of the Disney World complex, considered an extremely healthy entertainment paradise suitable for all ages, is the most "location" "must visit" where it exists.

Taking the topic of technology in the near future, Epcot Center welcomes tens of millions of visitors each year. In the photo taken on January 6, 2020, a long line of tourists visit the park parked close together. However, in the photo taken on March 18, 2020, the huge parking lots of Epcot Center were completely quiet, after the park management issued a temporary notice to close two days earlier.

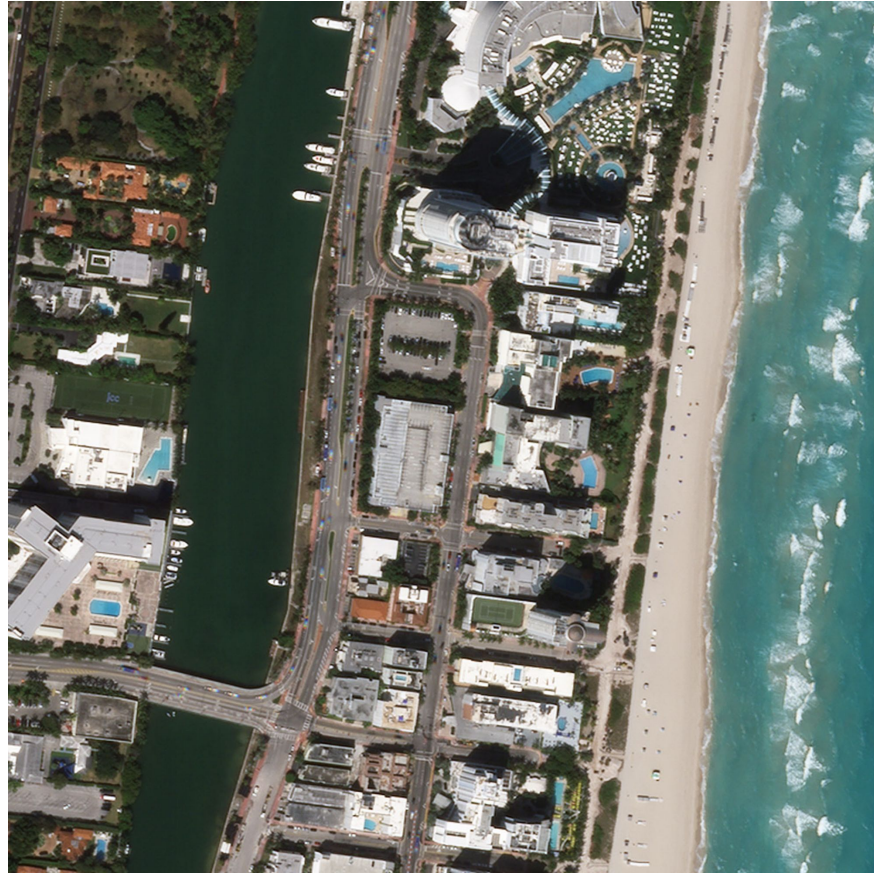




Volkswagen's factory in Tianjin, China,

The change of Volkswagen factories in Tianjin, China, on May 1, 2019 and March 3, 2020. On March 17, Volkswagen announced it would suspend car production for three weeks. At the request of the German government, the company will focus on producing masks and ventilators to combat COVID-19. A series of Volkswagen factories in China have been starting the shift for days.





In early March, when students in the US were taking spring break, it was still the most popular tourist attraction, despite a high number of US infections.

At the time of COVID-19 epidemic, which was happening extremely complicatedly in the US, the tourist places, once crowded with people, suddenly resisted strange strangeness. In the photo taken on November 17, 2019, the beach in Miami, Florida, USA still has a lot of tourists coming here to have fun. Surprisingly, until early March, it was still a place many American students went to during the spring break, despite a high number of US infections.

However, on March 18, the city of Miami announced a total closure of the beaches to limit the spread of the COVID-19 epidemic. As a result, the number of people flocking to the beach has been greatly reduced, according to photos taken on March 20, 2020. Hotels and motels around the beach are also officially closed at this time. On the roads leading to the beach, traffic almost 'disappeared', as most city dwellers were indoors.

You finished reading the article "**See this series of aerial photos to see how the world has changed dramatically because of COVID-19**" edited by the [TipsMake](#) team. We hope this article has provided you with many useful tech tips and tricks. You can search for similar articles on tips and guides. Thank you for reading and for following us regularly.