

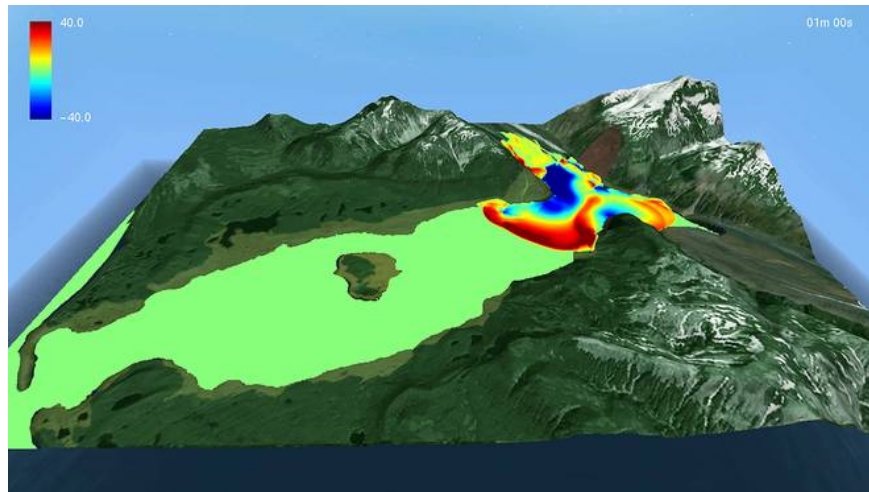
# Science invented a tsunami simulation model caused by an earthquake

A new technology model that simulates the way tsunamis struck after an earthquake has just been published by the scientific world.

One of the most frightening and dangerous natural disasters of humanity is earthquakes and tsunamis. This is one of two unique disaster events that can operate independently or can interact with each other and cause horrible unpredictable damage.

Recognizing this problem, recently a new technology model simulates the way tsunamis struck after the official earthquake was announced.

Accordingly, researchers from Granada University have developed a model that simulates how tsunamis appear after an earthquake occurs. This will help professionals and rescue workers be able to track simulated disasters that are likely to occur with specific developments within 10 minutes. Since then, there has been a timely improvisation before the tsunami hit.



Because before, tsunamis always change the travel time as well as the formation time, this will be the basis for allowing rescuers to have 10 minutes or a few hours to plan evacuation of people and assets. after an earthquake occurs. For simulation, this model has been used **by GPU** scientists.

To test this new model, the team simulated a series of tsunamis that occurred by earthquakes in the Bay of Lituya, Alaska area in 1958. The earthquake caused landslides, about 30 million meters. The mass of rock fell into the bay, creating a giant wave of a height of more than 500 meters above sea level.

## Picture 2 of Science invented a tsunami simulation model caused by an earthquake

It is known that tsunamis caused by earthquakes often appear in mountainous areas bordering the bay, lakes, islands with many mountains . And landslides can also cause huge waves to come, though However, the amplitude of influence of this wave is not as wide as the tsunami generated by the earthquake.

Simulation of natural disasters through this model can help scientists and staff simulate different types of tsunamis and learn more about new types of tsunamis caused by other impacts. And more importantly, all earthquakes, landslides, tsunamis often go together. The researchers also suggest that this model will be very useful for forecasting natural disasters, floods, landslides, tsunamis, or other storms .

You finished reading the article "**Science invented a tsunami simulation model caused by an earthquake**" edited by the [TipsMake](#) team. We hope this article has provided you with many useful tech tips and tricks. You can search for similar articles on tips and guides. Thank you for reading and for following us regularly.