

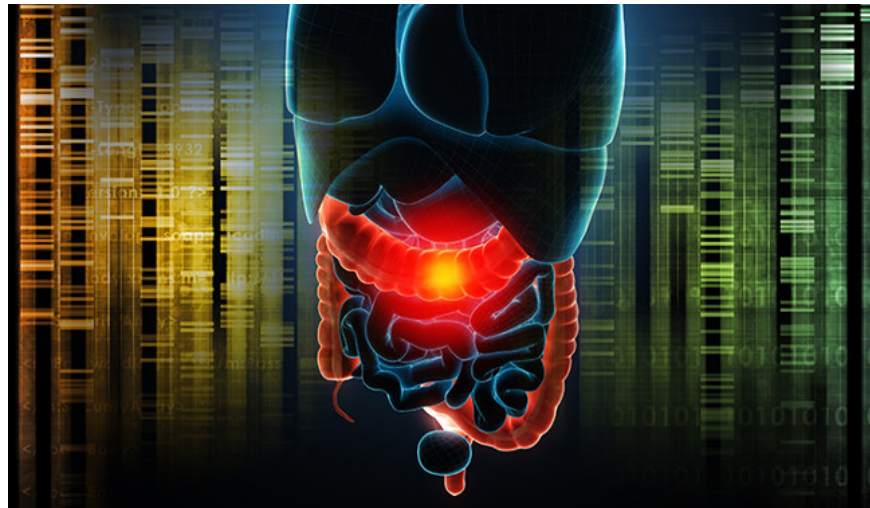
Science discovered the role of foreign genes in inflammatory bowel disease

INAVA is a newly discovered gene related to inflammatory bowel disease that has received medical attention.

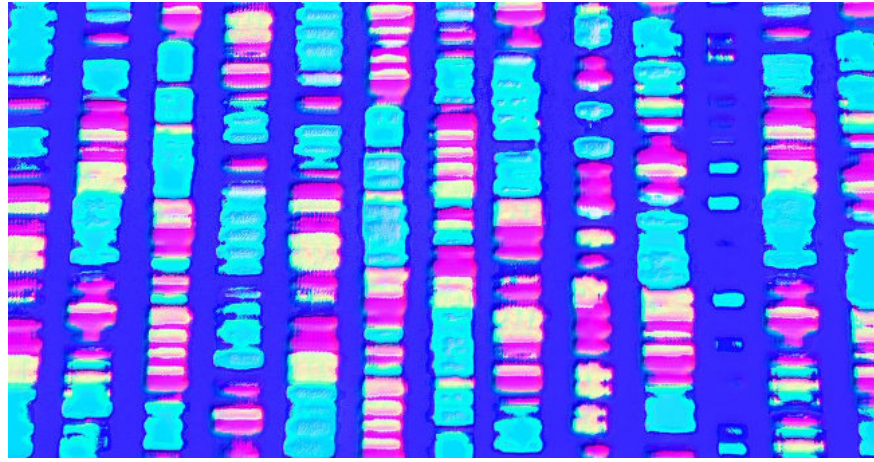
INAVA is a newly discovered gene related to inflammatory bowel disease that has received medical attention.

Before, inside a healthy intestinal system, bacteria and immune cells often maintain a certain balance system. However, if this balance system is disturbed, it is very likely to cause inflammatory bowel disease. Patients with inflammatory bowel disease are susceptible to diarrhea, abdominal pain, blood loss, fatigue, weight loss and even a series of severe complications that require surgical intervention.

To understand the underlying cause of inflammatory bowel disease, a team of Yale University scientists focused on understanding how genetic markers involved in inflammatory bowel disease are involved.



Led by medical professor Clara Abraham, the Yale team of researchers studied stem cells in the intestine and blood of healthy people. They stimulated these cells to contain bacteria or contain bacterial components and this exposure met the immune system's permission and in the new finding, they found the gene involved in the disease. enteritis with scientific name is INAVA.



The researchers showed that carriers of genetic susceptibility such as INAVA gene exhibited lower INAVA protein expression. This will reduce the ability of the cell's immune system to detect strange bacteria, in time to produce important immune reactions to eliminate bacteria, which in the long run increases the risk of inflammatory bowel disease.

This finding again helps researchers classify inflammatory bowel disease based on genetic structures. Abraham also said that this could be a new way towards the goal of treating inflammatory bowel disease in the future.

This study has just been published in the Journal of Clinical Investigation.

You finished reading the article "**Science discovered the role of foreign genes in inflammatory bowel disease**" edited by the [TipsMake](#) team. We hope this article has provided you with many useful tech tips and tricks. You can search for similar articles on tips and guides. Thank you for reading and for following us regularly.