

Samples of beautiful, modern and luxurious staircases for tube houses

Here are the beautiful, modern staircase patterns suitable for tube houses, please refer.

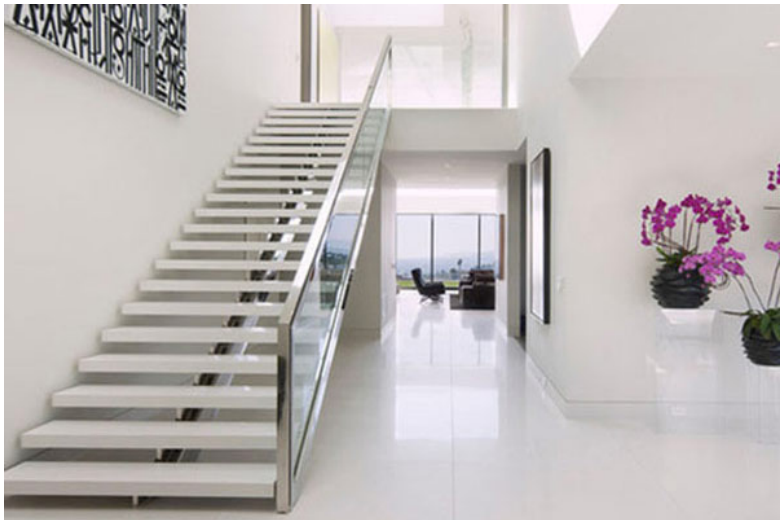
Stairs are one of the most important parts of a tall building. For a tube house with a small, long-running façade, choosing the right staircase pattern not only helps to satisfy the needs and uses, but also saves costs and area.

Here are the beautiful, modern staircase patterns suitable for tube houses, please refer.

Straight staircase model

Straight staircase design is simple but modern. This staircase model is used not only in pipe design but also by architects to choose for ordinary house models.





Spiral staircase pattern

This is a model of stairs to save the most space while creating a highlight for your home. However, for families with young members, the elderly, this model of stairs is not suitable because it is not safe to go up and down the stairs.







L-shaped staircase template

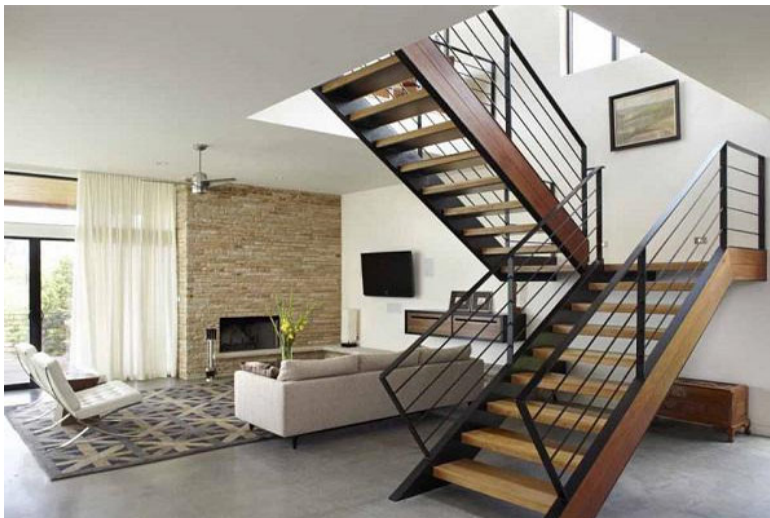
This simple but rugged staircase model is the most suitable choice for tube houses.





U-shaped staircase model

The design is quite similar to the straight staircase model but the landing of the U-shaped staircase is only an angle of 180 degrees facing up. This type of stairs has advantages of saving space, easy to arrange.





1. 38 extremely creative design ideas for a small apartment (Part 1)
2. 38 extremely creative design ideas for a small apartment (Part 2)

You finished reading the article "**Samples of beautiful, modern and luxurious staircases for tube houses**" edited by the [TipsMake](#) team. We hope this article has provided you with many useful tech tips and tricks. You can search for similar articles on tips and guides. Thank you for reading and for following us regularly.