

Review Toshiba Satellite C600

C600 has a set of speakers for good sound quality, decent battery life, low price but the configuration still satisfies the basic needs.

C600 has a set of speakers for good sound quality, decent battery life, low price but the configuration still satisfies the basic needs.

With a price of only VND 7.5 million, Toshiba's C600 is aimed at students, students or those who do not need to use a laptop with a strong configuration. Unlike most cheap lines, there are almost no other highlights, C600 brings speakers with good sound quality equivalent to entertainment lines of over VND 15 million.



Toshiba Satellite C600. (Photo: Tuan Hung).

In Vietnam market, Toshiba Satellite C600 series is distributed with 2 versions including Satellite C600-1007U and Satellite C600-1009U. These two models in turn use Intel Pentium Dual-Core processor at 2.3 GHz and Intel Core 2 Duo at 2.26 GHz, respectively. Both use 2GB of DDR3 RAM memory, standard Wi-Fi connectivity, Bluetooth 3.0, SuperMulti DVD drive and multi-point mouse.

Satellite C600-1007U and Satellite C600-1009U have reference prices of 7.5 and 8.85 million VND respectively (excluding VAT).

The version tested in this article is the Toshiba Satellite C600-1009U equipped with a Core 2 Duo chip with 2.26 GHz speed.

Here are some general reviews, details about this model (click on each section to see details).

Part 1: Design, keyboard, Touchpad

Part 2: Screen, performance

Part 3: Sound, heat sink, battery life.

Part 4: Compare with some other models.

General assessment.

** Advantages:*

- Cheap
- Hard plastic shell against dirt, fingerprints
- The sound system is very good compared to the price
- The battery life is quite good

** Defect*

- Performance is not high
 - Use the old processor line
-

Part 1: Design, keyboard, touchpad

Design



Float is a strong point that makes the C600 different from other low-cost models.

Toshiba C600 has an overall design that is not much different from the traditional line on the Satellite line of about VND 10 million.

However, the strongest point in this model's design is the floating style instead of glossy plastic like some previous cheap models of Toshiba or some other brands. The machine looks more and especially used to easily keep cleaner than glossy plastic that easily adheres to fingerprints. The outstanding Toshiba logo in the middle is more imprinted than the strokes floating around.



The underside of the C600.

The Satellite C600 is quite thick and weighs about 2.14 kg including the 6-cell battery included, the size does not stand out from other 14-inch laptops. According to the general trend, the underside of the C600 has no longer integrated many open caps to replace, repair each component parts as before but instead of many openings to increase heat dissipation and also make the machine look neat. than.



Right next to the machine.



Left edge.

Not surprisingly, a low-cost model like the C600 lacks many ports. It has no HDMI port, the latest high-speed eSATA or USB 3.0 data connection port. It only has basic connections such as two USB ports, a memory card reader, LAN port, 3.5mm headphone jack and microphone.

Keyboard, touchpad.



Typical keyboard of Toshiba.

Not using the trendy chiclet keyboard design, the C600 still has a keyboard with a traditional Toshiba design. The navigation keys are a bit smaller than the other keys but still large enough to work without mistaking. The bounce of the keys is good, but the keys are a little short, which makes it a bit embarrassing to use and takes time to get used to.

C600 does not equip keyboard shortcuts but instead integrates on Fx function buttons or numeric keys and Fn keys.



The touchpad of the device is of good quality.

The Satellite C600's touchpad is a bit small in size compared to the average size on other mainstream 14-inch laptops. However, the quality of this touchpad is quite good, the sensitivity is low, and the lumpy face also helps to manipulate without slippery. Two mouse movies give a very precise but slightly heavy touch.

Part 2: Screen, performance

Part 3: Sound, heat sink, battery life.

Part 4: Compare with some other models.

Part 2: Screen, performance

Screen.




Satellite C600's mirror screen.



The C600 comes with a 14 inch mirror screen with a resolution of 1,366 x 768 pixels. This type of screen displays sharp images but is easily glossy when used outdoors or has a light source in front of the machine. When viewing HD videos, the device performs well, almost without image lag. However, in transitions with dark colors it will be difficult to observe because of the shadow.


Performance performance.

Toshiba Satellite C600-1009U uses Intel Core 2 Duo processor with 2.26 GHz speed, 2 GB DDR3 RAM memory, integrated Intel HD graphics chip, DVD read / write optical drive.

The Windows Experience Index assesses key system components on a scale of 1.0 to 7.9.

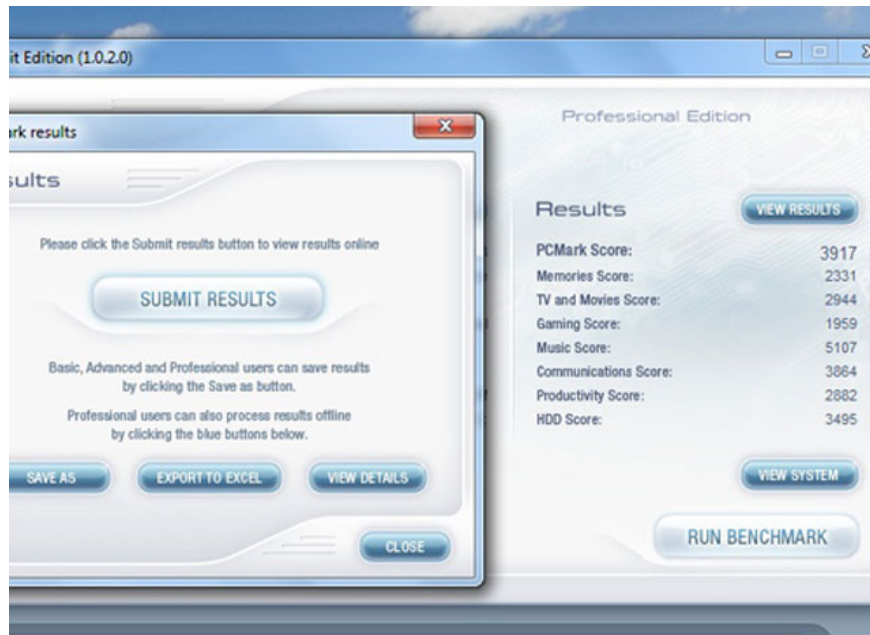
Component	What is rated	Subscore	Base score
Processor:	Calculations per second	5.7	 3.4 Determined by lowest subscore
Memory (RAM):	Memory operations per second	5.5	
Graphics:	Desktop performance for Windows Aero	3.9	
Gaming graphics:	3D business and gaming graphics performance	3.4	
Primary hard disk:	Disk data transfer rate	5.6	

 [What do these numbers mean?](#)  [View and print detailed performance and system information](#)

 [Tips for improving your computer's performance.](#)

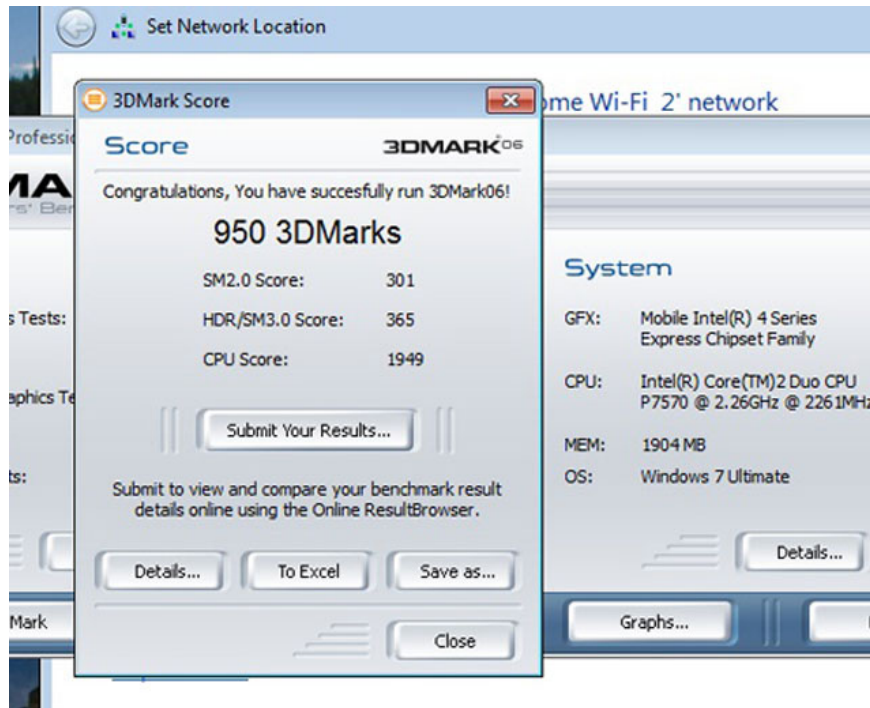
Scoring with Windows Experience Index.

With the above hardware, this model achieved 3.4 points (taking the low score is clicked due to graphics capabilities for the game) when marked by the Windows Experience Index system on Windows 7 Ultimate (64bit) operating system installed. On a scale of detail, the processor reached 5.7 points, RAM memory was 5.5 points while the graphics capability was 3.9 points and the graphics for the game reached 3.4 points.



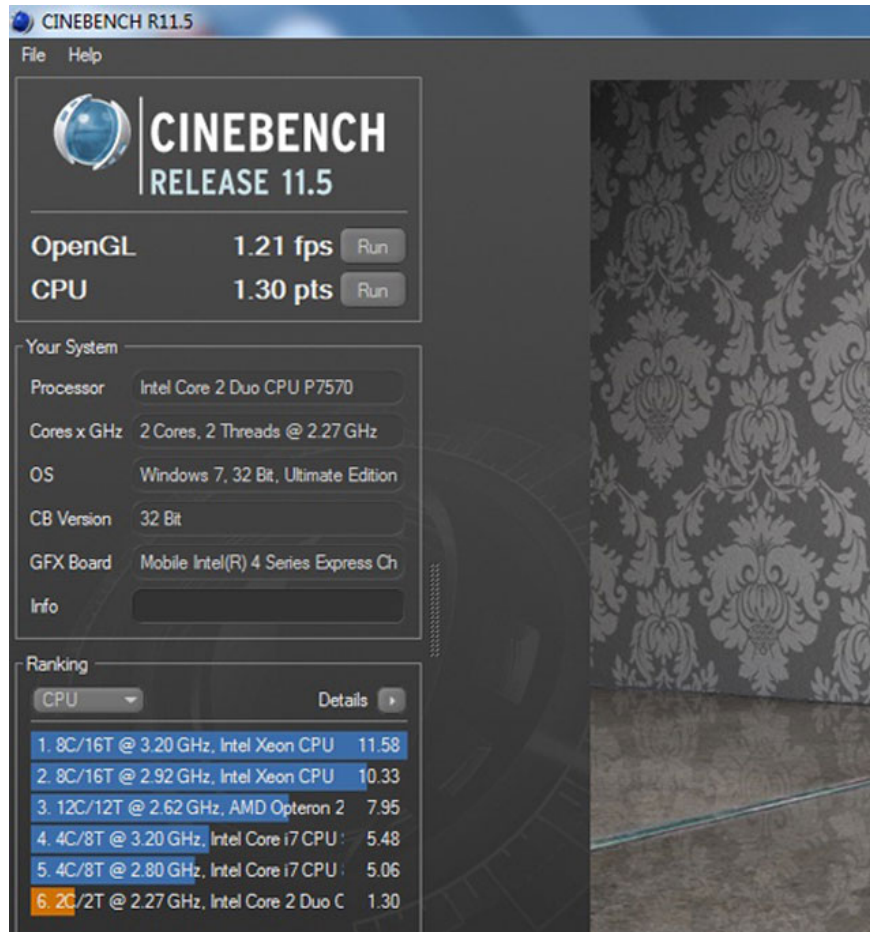
Scoring with PC Mark Vantage.

Continuing to use PCMark Vantage program to evaluate overall strength, Satellite C600 reached 3,917 points, equivalent to the low price of about 10 million VND.



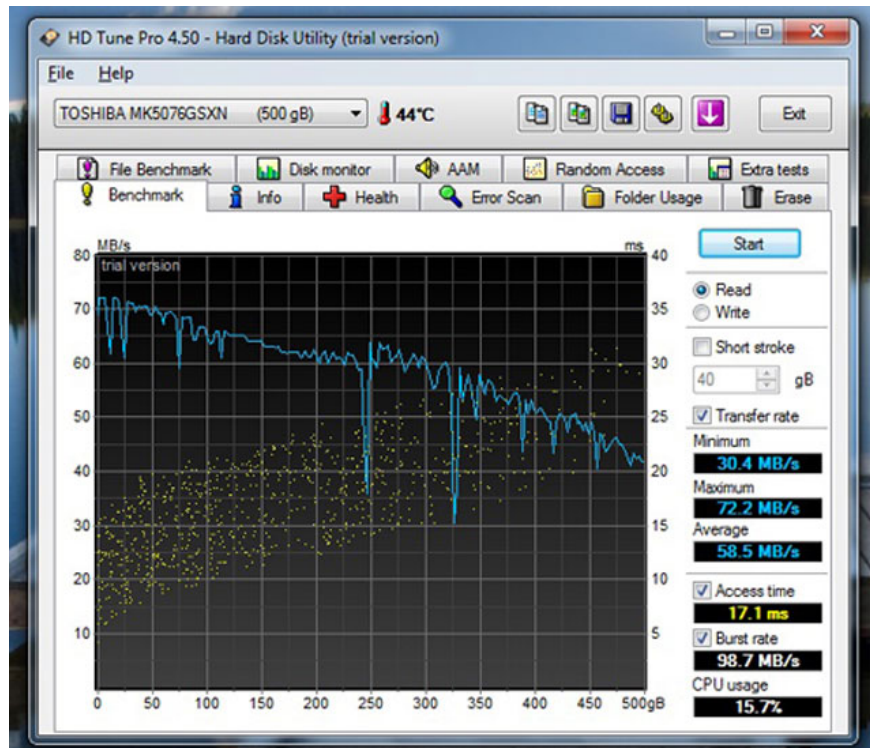
Score with 3D Mark 06.

Due to the use of an integrated graphics chip based on the older Intel Core 2 Duo processor, C600's graphics processing capability is not good. The 3D Mark 06 score only stops at 950 points.



Microprocessor scoring.

Continue using the Cinebench 11.5 program to evaluate the processor and try OpenGL. The result is processor with 1.3 points and graphics with 1.21 frames per second.



Large hard drive.

The hard drive that the C600 uses is 500GB of 5,400 revolutions per minute. In fact, the data reading ethnicity averages 58 MB / sec, slightly lower than the average of 60MB / sec in high-speed drives of 5,400 rpm.

Part 1: Design, keyboard, Touchpad

Part 3: Sound, heat sink, battery life.

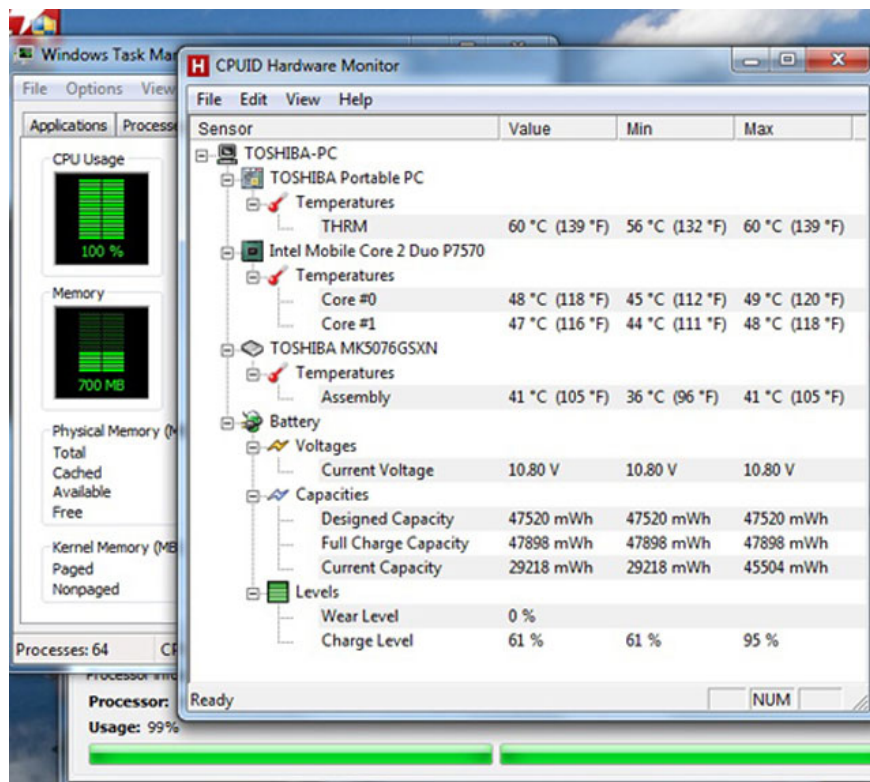
Part 4: Compare with some other models.

Part 3: Heat dissipation, battery life, sound

Radiators.



The bottom of the machine has an exhaust fan to increase heat dissipation.



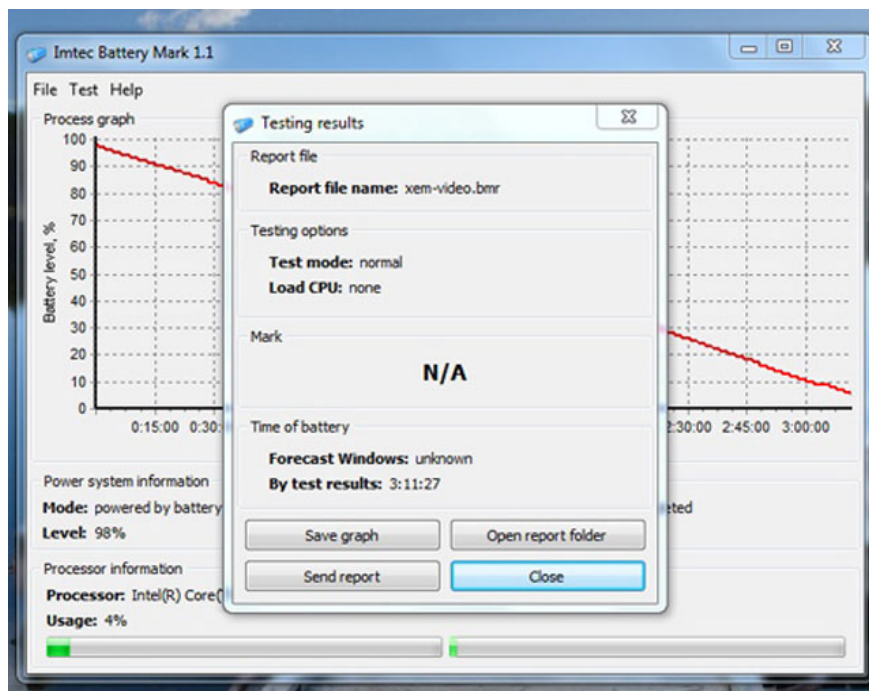
Machine temperature when running CPU full-load (100%) about 30 minutes.

Compared to the price, the ability of C600's heat dissipation is quite good. With the use of basic applications in launchers with an average temperature of about 26 degrees Celsius, the machine works cool, only slightly warm at the edge of the touchpad and left of the keyboard. Testing for running 3D Mark 06 continuously for about 45 minutes, the machine heats up a bit but still can use two legs in necessary cases.

Battery life.

The ProBook 4430s uses the included 48 Wh 6-cell battery pack. To fully charge from 7% when turning off the whole machine takes about 3 hours or 3 hours 40 minutes while still in normal use.

Experimental open Firefox loads 10 web pages and automatically reloads every 15 minutes, opens an online music player page and gives continuous playback, using headphones instead of the speakerphone and leaving the volume level at 70%. 50% light for the machine to run until it turns itself off (also at 5%), this time reaches 3 hours 27 minutes.



Time to watch movies in HD.

While testing the device to run a standard 720p HD movie and play it back continuously until it is off, turn off the Wi-Fi connection, use a headset instead of the speaker and put it at a volume of 70% (negative Windows Media Player program bar to 100%), 50% brightness for the device to run until it is turned off (with 5% battery level), this time reaches 3 hours 11 minutes.

These figures show the battery life of the C600, more than most low-cost models or mainstream laptop models using the previous Intel Core 2 Duo processor. This battery life is similar to the recent Core i second-generation laptops.

Sound.



Speaker system is the most notable strong point on C600.

Not equipped with Harman / Kardon brand sound, but in C600 still received the favor from Toshiba with the Toshiba Audio Enhancement sound system with high volume. Testing showed that when opened about 95%, enough volume for the room is about 25 m2 for personal entertainment.

With Realtek ALC269 audio controller chip similar to the high-end entertainment lines of Toshiba, C600 for clear sound with bass is quite clear though not really outstanding. However, users need to install the correct driver of the new device to fully enjoy the quality of the speaker. By default, drivers installed by Windows have poor sound quality.

Part 1: Design, keyboard, Touchpad

Part 2: Screen, performance

Part 4: Compare with some other models.

Part 4: Compare with some other models

Compare with models of the same price range, screen size.

Model Toshiba Satellite C600 Compaq Presario CQ42-455TU 14.1-inch 14.1-inch **screen** 2.26 GHz Intel Core 2 Duo **Chip** speed 2.26 GHz **RAM** 2GB DDR3 2GB DDR3 Intel HD Graphics Graphics Intel HD Graphics **Drive** 500GB 320GB **hard connector** 2 USB 2.0 ports, card reader, VGA. 3 USB 2.0 ports, card reader, VGA. **Weights** 2.13 kg 2.2 kg **Highlights** Speaker system good Optical drive writes Lightscribe disc labels

Part 1: Design, keyboard, Touchpad

Part 2: Screen, performance

Part 3: Sound, heat sink, battery life.

You finished reading the article "**Review Toshiba Satellite C600**" edited by the [TipsMake](#) team. We hope this article has provided you with many useful tech tips and tricks. You can search for similar articles on tips and guides. Thank you for reading and for following us regularly.
