

# Revealing how to connect your phone to a projector simply and quickly

Revealing the most detailed and accurate way to connect your phone to a projector, the steps are extremely simple.

Are you looking for a way to quickly connect your phone to a projector? Knowing **how to connect a projector to your phone** can bring you many conveniences in your studies and work. You can comfortably enjoy movies on the big screen, or make eye-catching presentations when you forget to bring your computer or your computer is broken. Please refer to the simple and quick way to connect your phone to a projector in the TipsMake shares below.

## The role of connecting the phone to the projector

Few people know that connecting from phone to projector has unexpected benefits for work, study and entertainment:

- To display enlarged information for convenient viewing and presentation, projectors are chosen by many people.
- On the contrary, if you find presenting on a computer quite cumbersome, you can use a phone which is both compact and convenient.



## How to connect your phone to a projector quickly and easily

There are many ways to connect your phone to a projector that you can refer to. Here are some commonly used connection methods that you can refer to.

### **How to connect phone to projector via cable**

- To directly connect an Android phone or iPhone to the projector, you can use an MHL connection cable. This cable will have 2 ports, you plug 1 port into the phone and the other port into the projector to be able to directly project all phone screen interfaces onto the projector screen.

- The conditions to be able to connect the phone to the projector using a cable are:

+ Does your phone support connecting to **a projector** : Some phone models cannot support this feature. To check, try connecting to see if the screen can be projected.

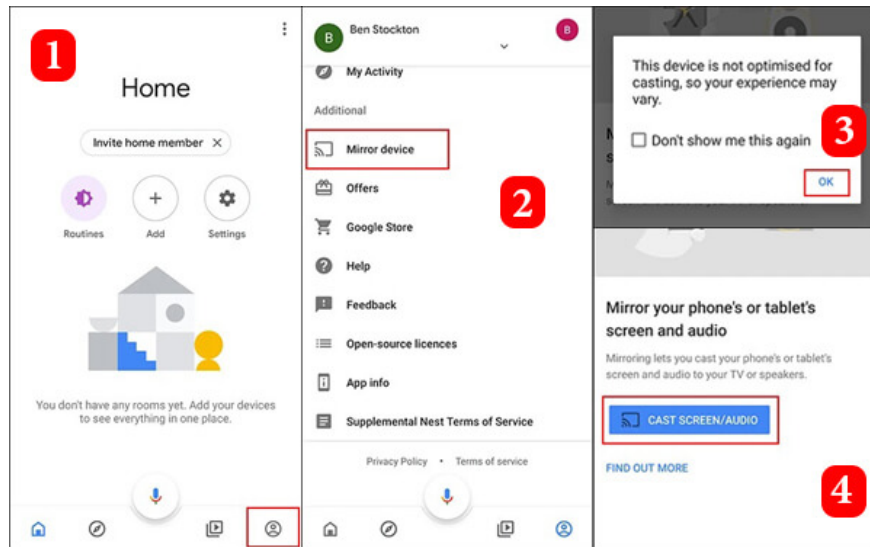


+ The phone connection port must be compatible with 1 end of the MHL cable: For iPhone, you need to choose an MHL cable with a Lightning port, while for Android phones, the cable end will usually be a Micro USB or USB Type-C port.

### **Connect your phone to the projector using the Chromecast app**

Chromecast is a convenient feature of Google that allows connection and projection between 2 devices. To use this feature to connect your phone to the projector, do the following:

Step 1: Download the Google Home app to your phone and register or log in.



Step 2: Open Google Home > Click on the account icon > Click "Mirror Device" > Click on "Cast Screen/Audio" > Click on "Chromecast" to start connecting.

## How to connect phone to projector wirelessly

For connecting projectors to mobile phones with a plug, there will be inconveniences, troublesome or damaged connection wires. Therefore, manufacturers have developed a new feature that allows connecting projectors and phones via Wifi waves.

Step 1: Plug in the power to EZCAST and then plug this device into the projector's HDMI port.

Step 2: Select the HDMI port on the projector. The EZCast interface will appear.

Step 3: Download the EZCAST app on CHplay.

Step 4: Open the EZCast application and click Search. An optional interface will appear so you can share data such as: Video, Photo, Music.....

Step 5: Connect your phone to EZCast. Select Wifi connection and the name of the EZCast device will appear in the connection section.

Step 6: Connect the EZCast device to the internet. Select the network name and enter your home Wifi password. Finally, you can use your phone and projector normally.

## How to connect peripherals

Step 1: To connect peripherals, you need to connect Fcast to your projector via HDMI port and **USB** port to get power for Fcast. Select the input source as HDMI where you are plugging Fcast. The Wifi name and password of Fcast will appear on the screen.

Step 2: After successfully connecting, open the web browser on your phone and access the Fcast address clearly displayed on the projector screen.

Step 3: After accessing, go to settings to connect Fcast to Wifi according to the instructions displayed on the screen. When successfully configured, Fcast will connect to the Wifi you just installed.



### Smart View on Samsung devices

Step 1: Samsung devices have pre-installed Smart View application for connecting to the projector. First, open Screen Mirroring or Device Mirroring mode on the projector.

Step 2: Then on your phone, swipe down from the top to open the shortcut menu, and tap the Smart View icon to enable this feature.

Step 3: Your phone will scan for nearby devices that have Chromecast or Miracast enabled. Tap the name of the projector you want to connect to, and you're done.

### Conclusion:

Thus, through the article shared above, we have shared how to connect your phone to a smart projector, simply and quickly. Hopefully this will be a useful reference information for you. In addition, if you have any questions that need to be answered, please contact **TipsMake** via hotline 19001903 for the fastest advice and support!

You finished reading the article "**Revealing how to connect your phone to a projector simply and quickly**" edited by the [TipsMake](#) team. We hope this article has provided you with many useful tech tips and tricks. You can search for similar articles on tips and guides. Thank you for reading and for following us regularly.