

Resolve error 'Setup did not find any hard disk drives' when installing Windows XP

One of the most common errors when installing new Windows XP is the message 'Setup did not find any hard disk drives' and it confuses you.

TipsMake.com - One of the most common errors when installing new Windows XP is the message ' *Setup did not find any hard disk drives* ' (*it can't find a hard drive on your computer*) and it confuses you because it's obviously a computer. If you have a hard drive, you even have to format the drive carefully.

This error usually occurs on a new computer because the machine's drive driver is not set to XP support mode, usually SATA (Serial ATA) control.



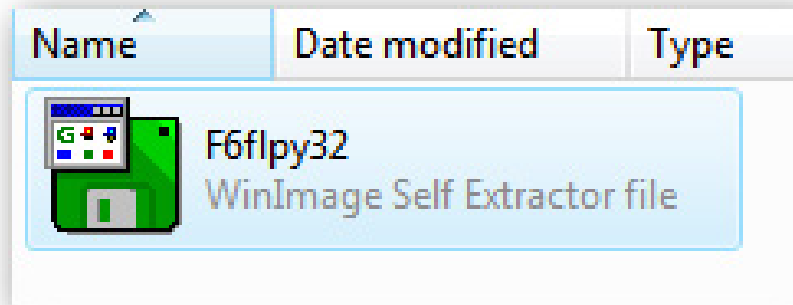
If there is no floppy drive on the computer (usually computers that are no longer using this drive) then you will need to use a process called *Slip-streaming* - built-in drive driver to the installation CD Windows XP.

Search for Driver for XP

The best place to find a driver is on the hardware company website you are using. We can use the **WinImage** program. For the following example, you will see the download link for *Intel SATA controller driver* for HP computer

Intel Chipset Installation Utility for ICH7	7.2.2.1006 A 24 Mar 2006	1.1	56K: 2m 512K: <1m	Download
Intel Matrix Storage Manager	5.5.0.1035 A  17 Mar 2006	17.7	56K: 43m 512K: 4m	Download
Intel SATA AHCI Controller Driver	5.5.0.1035 A 16 Mar 2006	0.59	56K: 1m 512K: <1m	Download

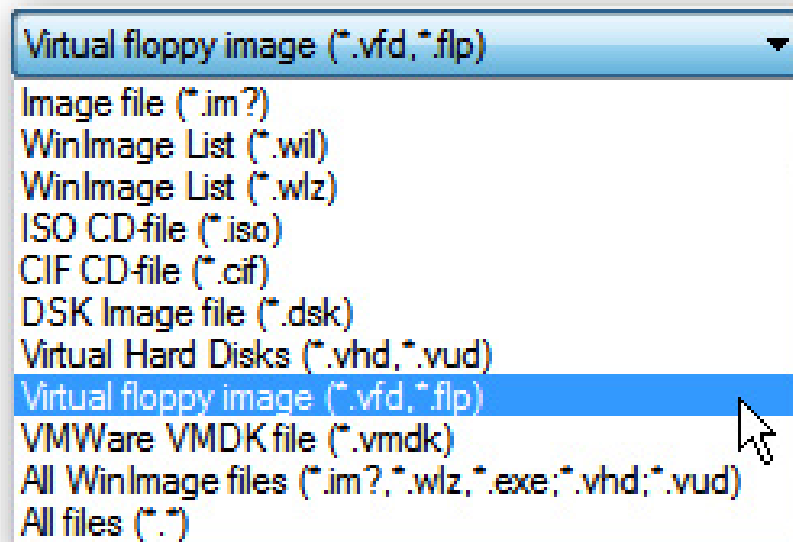
Download and run the executable file to extract a file called **f6flpy32.exe** into a temporary directory. Don't try to run this file because it will require you to run on the floppy drive.



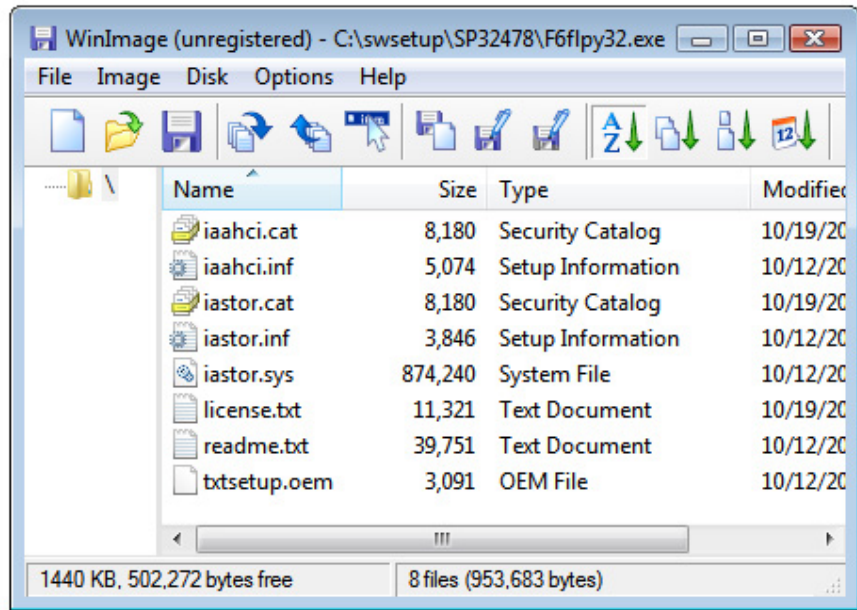
So what do you have to do with this file? There are several possible ways to do this depending on how the manufacturer's files are packaged:

- Use **WinImage** to extract them, this is a software that you can try out within 30 days before registering.
- Use **WinRar** to extract. In many cases this file will extract the file * .flp.
- Some drivers allow you to automatically extract to a folder.

The following is a list of files that WinImage can control



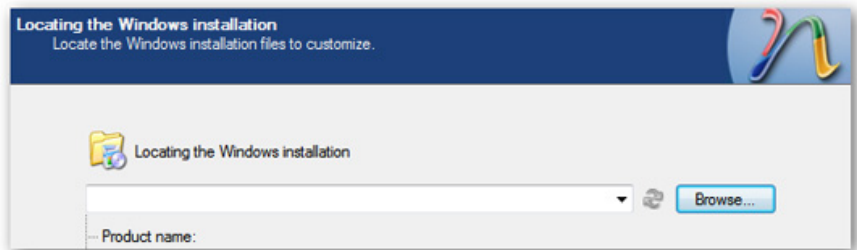
Run WinImage and open the file, you will see the content inside. Just extract them into a folder, it is best to name the folder so that it is easy to remember.



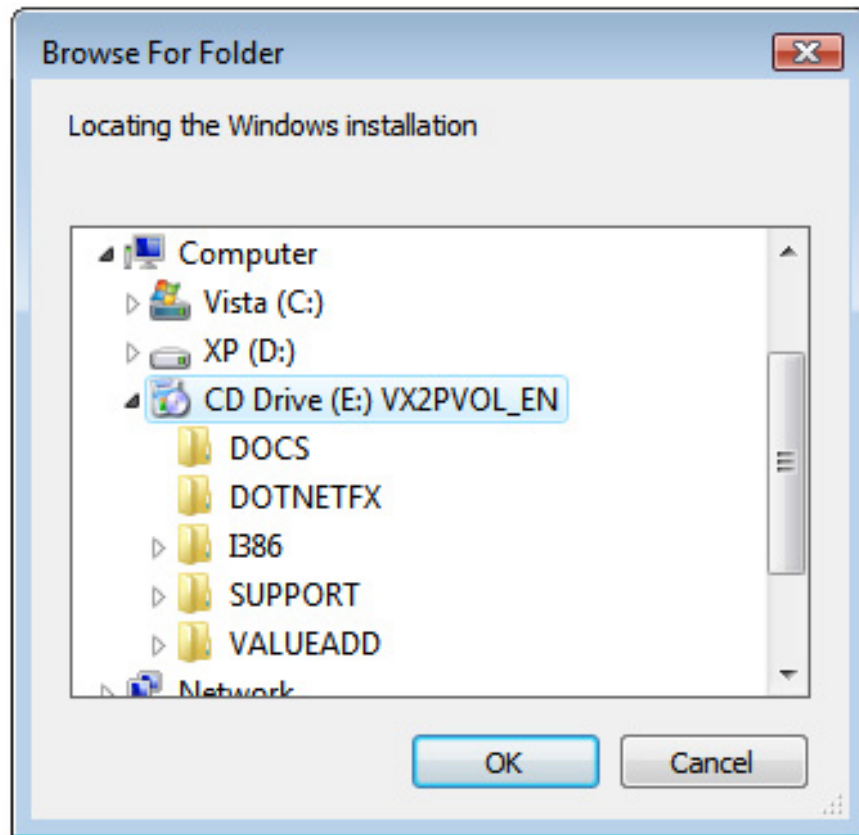
Page 2 : Create a custom XP disk

Create a custom XP disk

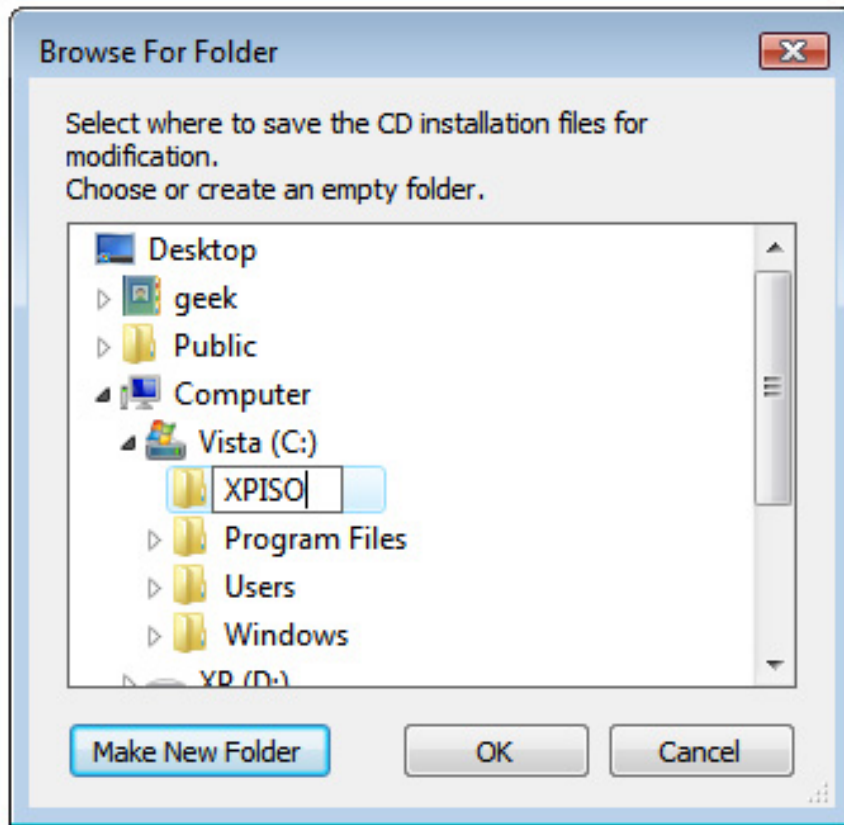
We will use the software called nLite to create an XP installation disc, you can download it [here](#) . Install and launch the nLite program, you will receive a message to load into the Windows installer, click the **Browse** button.



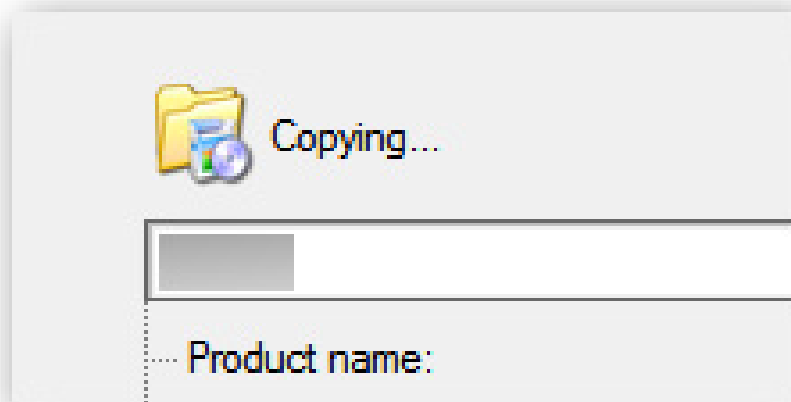
Browse to the folder containing the installer on the CD drive, and then click **OK** on the *Browse For Folder* window.

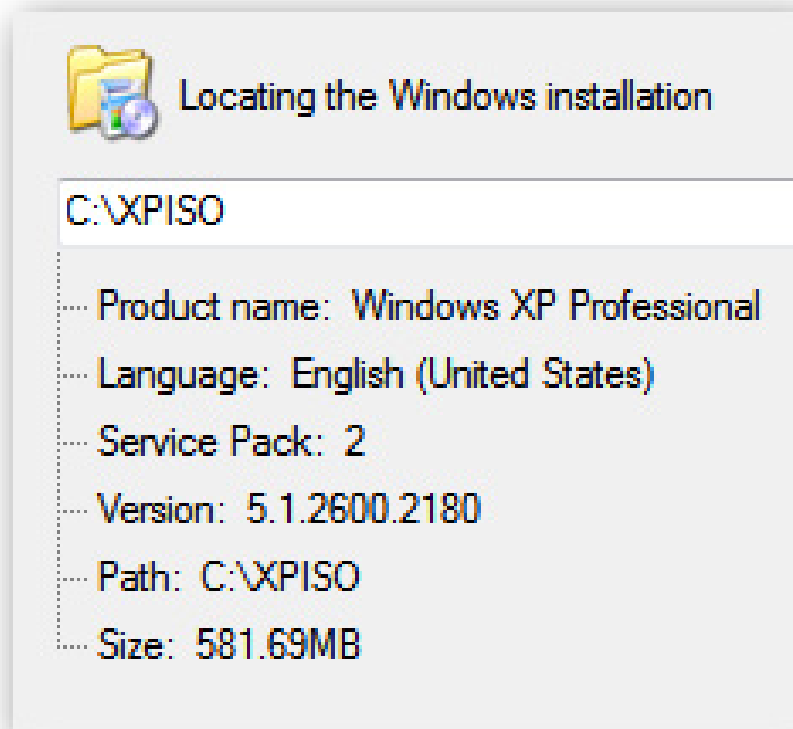


Next you will receive a message indicating where you want to save the temporary files used during Slipstreaming. In this example, we create a new folder called **XPISO**, but you can name it anything, noting one thing it must be a new folder.

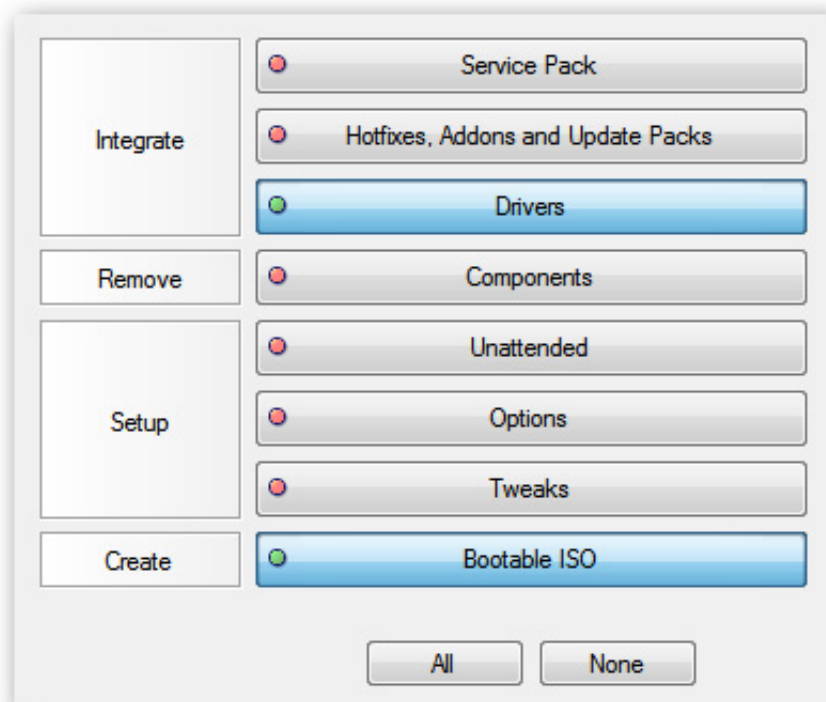


nLite will copy all the files needed for the XP installer into the temporary folder you created. Once completed, you will see information about the version of Windows XP you use.



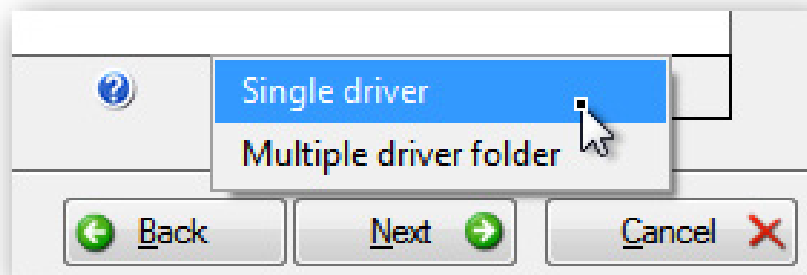
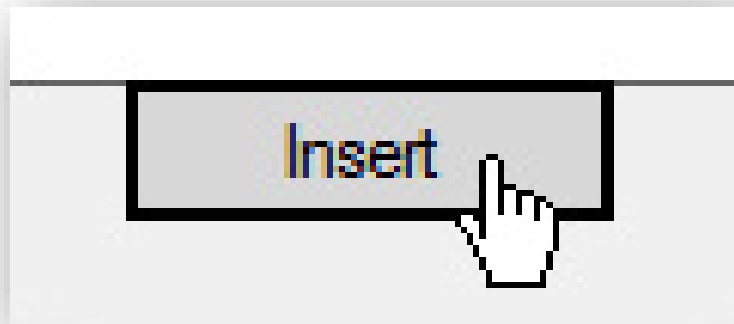


Click the **Next** button until you see the following screen, where you can select the desired options. In this example, select **Drivers** and **Bootable ISO** .

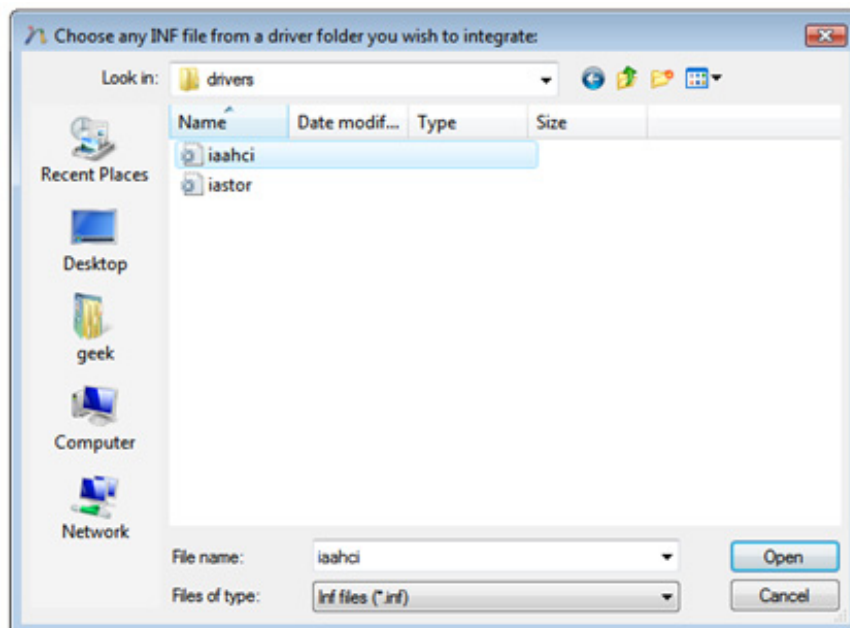


Note : You can choose any option if needed. nLite will pack all options, set tasks or automatically remove components in the installer, but in this article's purpose, just select the 2 options above .

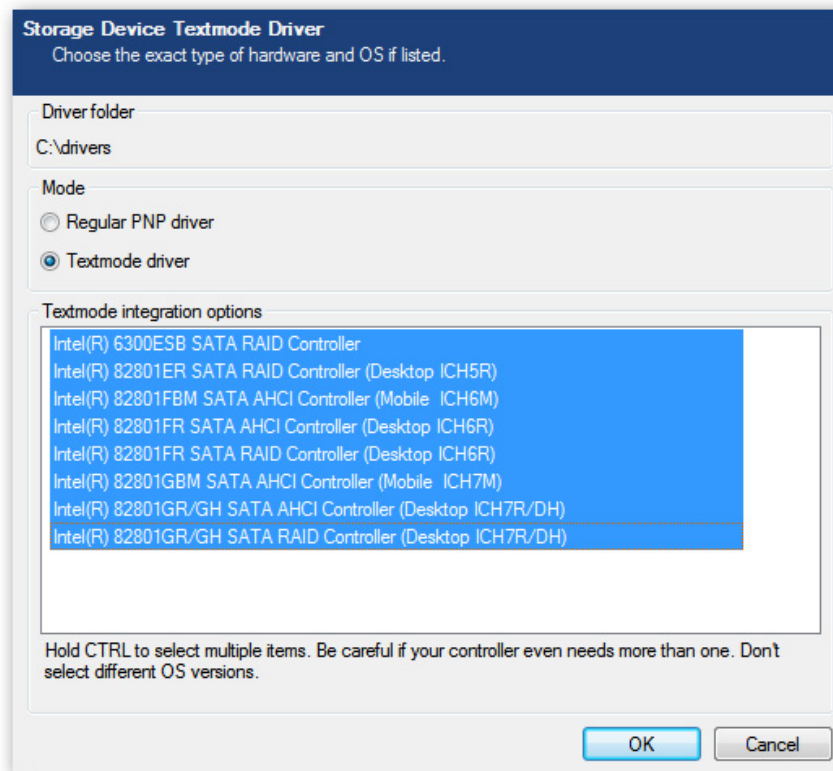
Click **Next** until you see the driver selection screen. If you click the **Insert** button, you can choose between adding a single driver or a driver folder. In this case, the driver directory that you searched for and unzipped is above.



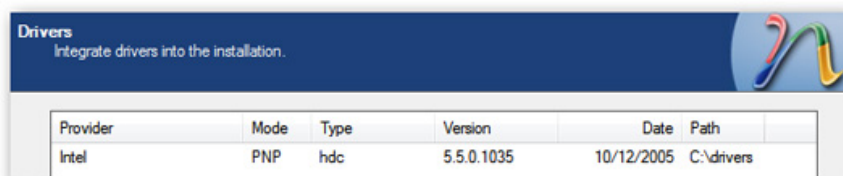
Browse to the directory containing the extracted driver files, then click **Open** . Selecting any * .inf file is not really important because you will select all the files in the directory.



nLite will issue a message to select the driver. If you don't know exactly which driver, you can use *Device Manager* in Vista to find the exact device or else select all the suggested options. One thing to note is that you do not select drivers for 64-bit systems if your computer is 32-bit or should not choose the wrong operating system version.

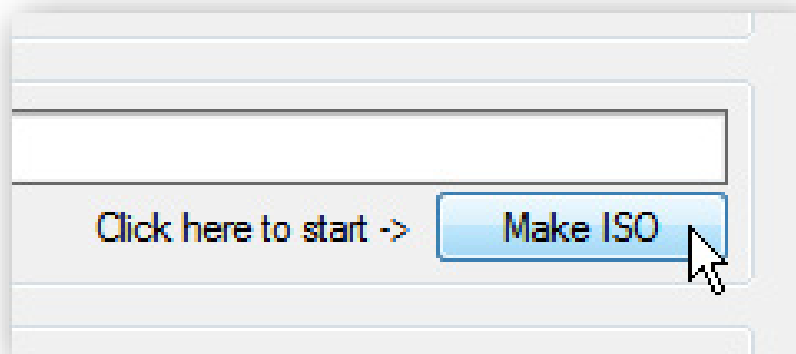
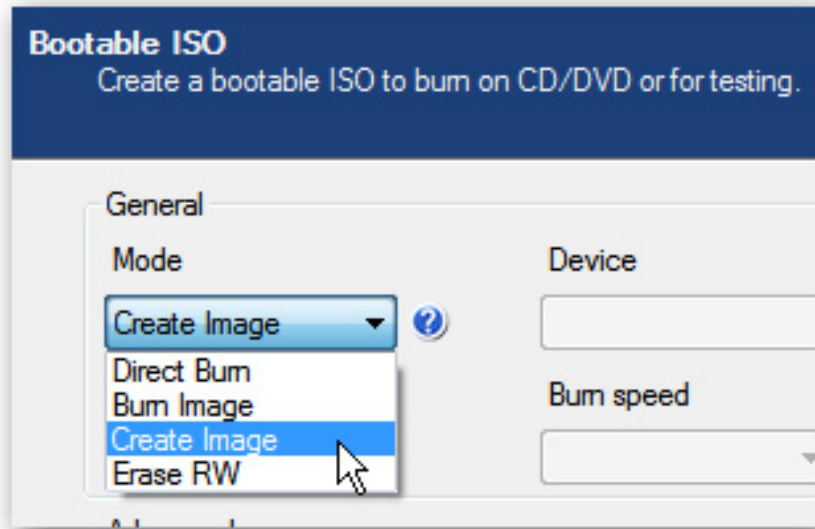


You should search for drivers for both storage devices and networks because these drivers are needed and are often missing when installing XP.



You have almost completed the disc creation process here. Now just choose to burn directly to the CD or choose **Create Image** to create an ISO file.

Note : If you choose to create an ISO file, make sure you click the *Make ISO* button before clicking *Next* .



After this process you have an ISO file or a CD to start the XP installation process.

You finished reading the article "**Resolve error 'Setup did not find any hard disk drives' when installing Windows XP**" edited by the [TipsMake](#) team. We hope this article has provided you with many useful tech tips and tricks. You can search for similar articles on tips and guides. Thank you for reading and for following us regularly.