

# Researchers have figured out how breast cancer spreads to the brain

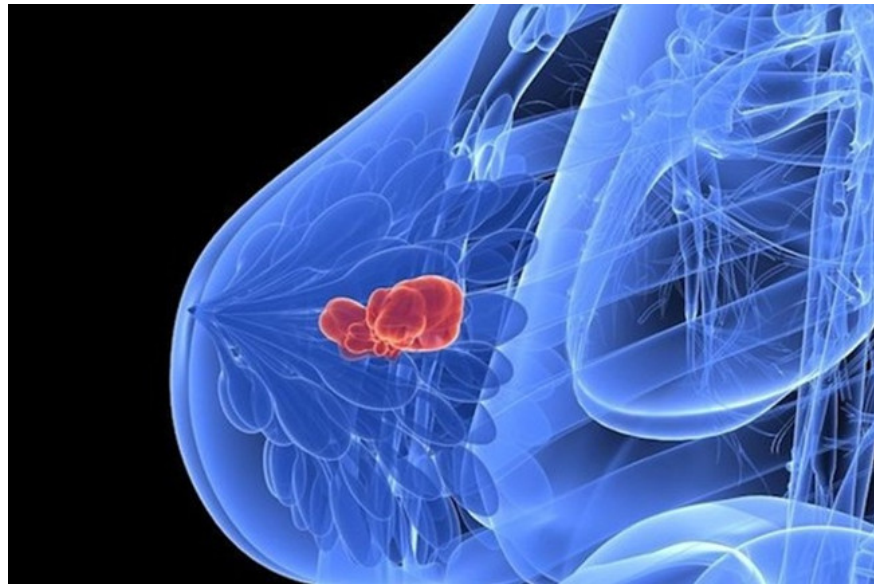
A group of international medical scientists have discovered how breast cancer cells spread to the brain, causing the global medical community to fall back.

A group of international medical scientists have discovered how breast cancer cells spread to the brain, causing the global medical community to fall back.

Before, 90% of cancer deaths were due to cancer cells spreading and breast cancer is a typical disease of this mechanism.

However, there are many patients who do not die from cancer cells after chemotherapy reappears in the breast but they spread in other parts of the body. And the most dangerous place is the brain. More than 40% of women with developed **HER2** positive **breast cancer** have metastasized to the brain. And now, the medical community has found a way to spread this type of cancer.

1. Warning anti-sweat products containing aluminum salts cause breast cancer
2. Fever with a implant device creates a false scene to catch breast cancer cells
3. Reflexology helps remove fatigue after treating breast cancer

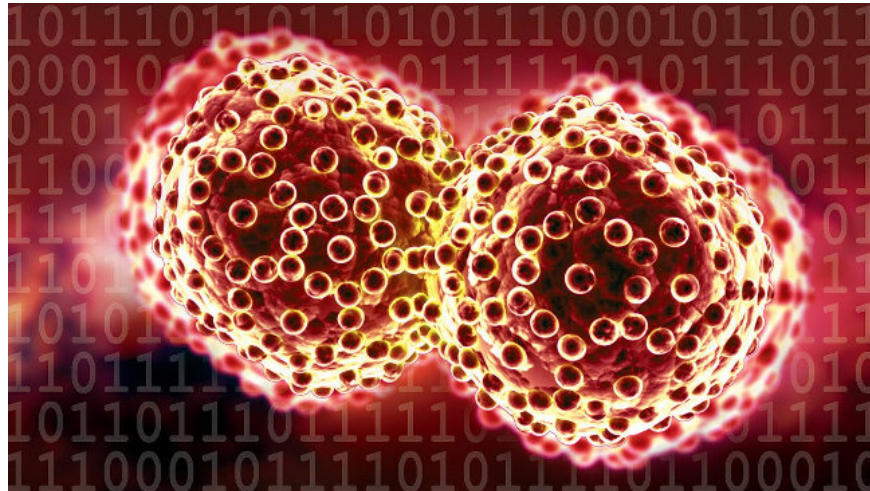


Accordingly, breast cancer cells wrap around a **fake protein called Tereelin** , which is a functional protein found in the brain. With a special structural coating, breast cancer cells quickly spread to the brain, the nervous system signals a warning. Camouflage cells are extremely good, after reaching the brain, it begins to form new

tumors in the brain.

*' Many women with breast cancer do not die from breast tumors but die from tumors in the brain, which is a very dangerous fact ' - Dr. Rahul Jandial at the City of Hope Department of Neurosurgery said in An announcement.*

*' I want to find out why women with positive HER2 breast cancer (accounting for about 20% of all breast cancers) have such a high incidence and tendency to spread to the brain compared to other Other specific breast cancer '.*



After performing brain surgery, Dr. Jandial and his team took the remaining cancer tissue samples and compared them to breast cancer tissues. The results showed that the cancer tissue sample on the brain is very similar to the tissue structure in breast cancer cells.

*' Positive HER2 breast cancer cells have had disguise, extremely dangerous spying, overcoming alert and defense networks of the brain. And the ultimate goal is to develop more tumors in the brain . '*

Understanding this mechanism, it will be an important step to develop special cancer treatments with specific metastases that account for 90% of the cause of cancer death. And most dangerous, people with metastatic breast cancer have only a 20% chance of surviving about 1 year after diagnosis.

You finished reading the article "**Researchers have figured out how breast cancer spreads to the brain**" edited by the [TipsMake](#) team. We hope this article has provided you with many useful tech tips and tricks. You can search for similar articles on tips and guides. Thank you for reading and for following us regularly.