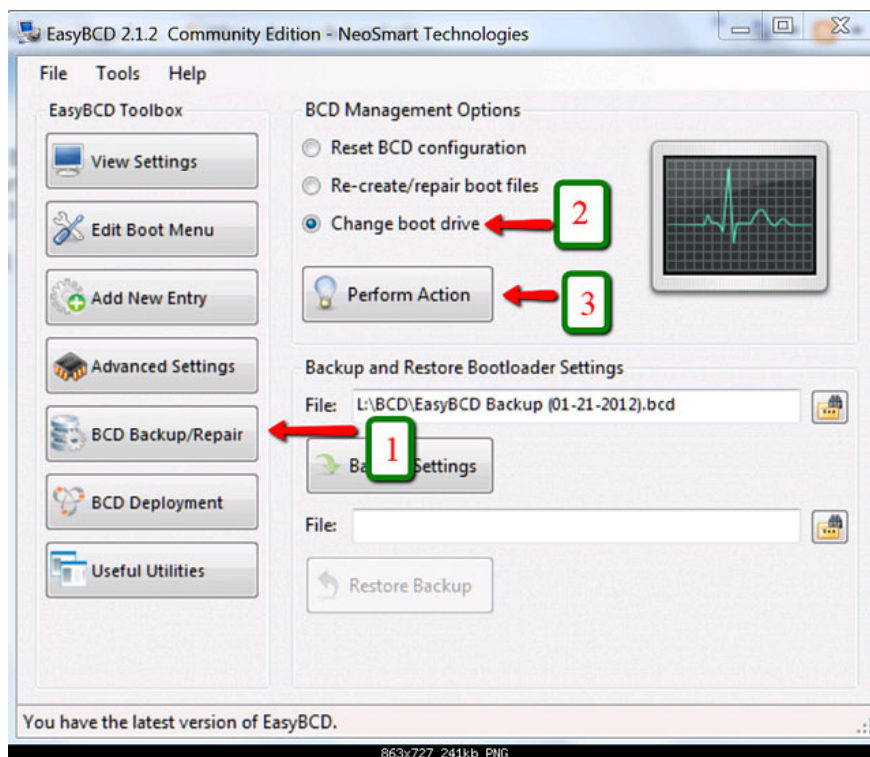


Remove 'reserve system' partition in Windows 7

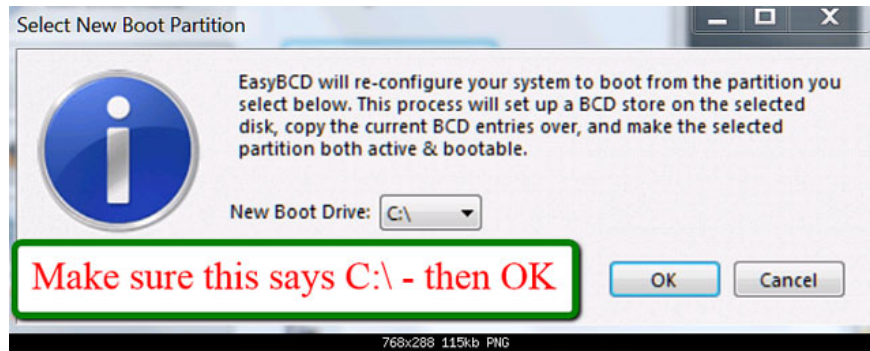
Copy bootmgr from 100MB active partition or recovery partition to C: is extremely simple with EasyBCD. You can download EasyBCD here. The bootmgr will not be moved from the original location - it will only be copied to the C: partition directory. C: partition will be activated and 100MB partition will be deactivated.

Copy bootmgr from 100MB active partition or recovery partition to C: is extremely simple with EasyBCD. You can download EasyBCD here. The bootmgr will not be moved from the original location - it will only be copied to the C: partition directory. C: partition will be activated and 100MB partition will be deactivated.

The steps to take are very simple and explained in the following 2 pictures. When opening **EasyBCD** , the first thing you need to do is find the **BCD Backup / Repair** section, then click on the **Change boot drive** item and then click **Perform Action** .



After you have done the 3 steps above, you will see an image like the one below, all you need to do is click **OK** .



Good luck!

You finished reading the article "**Remove 'reserve system' partition in Windows 7**" edited by the [TipsMake](#) team. We hope this article has provided you with many useful tech tips and tricks. You can search for similar articles on tips and guides. Thank you for reading and for following us regularly.
