

# Remote UPS management via network

Not to say, you also know the importance of UPS - the device that stores electricity. UPS management software comes with but no less important because it allows management, warning about power source and setting time for safe shutdown ... Especially in the current working environment, all Both are connected to the network, then deploy the word management function

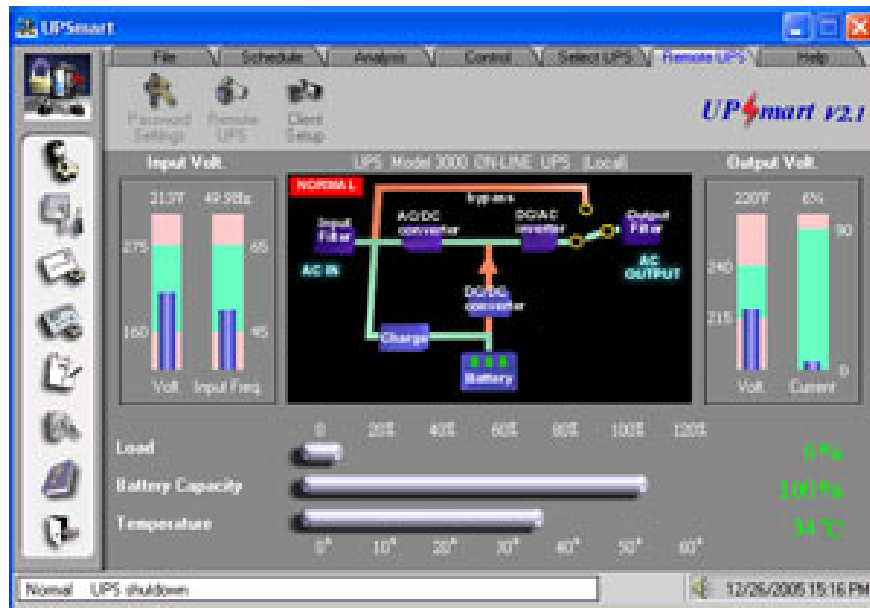
Not to say, you also know the importance of UPS - the device that stores electricity. UPS management software comes with but no less important because it allows management, warning about power source and setting time for safe shutdown . Especially in the current working environment, all Both are networked, deploying remote management functions will significantly increase efficiency.

## General features

Most of these software have features such as input / output current parameters; battery capacity; current load, detailed configuration of parameters; parameters, scheduling work for UPS, self-checking the ability to switch power supply when the power is out, sending notifications and executing commands as required, recording operating status, security in management, and one Important features are remote management and simultaneous management of multiple UPS of the same type. Some programs support the whole WAN.

Microsoft operating system (Windows 2000 / XP) with utility support controls many UPS brands APC and Generic with some basic features such as sending notifications, running pre-orders or turning off the computer when there is a problem . To use you can go to Control Panel, select Power Option.

Select connection port: Some software supports both COM and USB communication but there are others that only support COM. After installing, starting the program, the software automatically scans the signals from the communication terminals (COM, USB) by default, the program also provides search commands with optional communication.



Control computer connected to UPS: The program allows setting up the program execution time arbitrarily, save and close the running programs, time to turn off the computer safely as required or after having trouble about power or battery, time to turn off the UPS, the volume of files containing the recorded events and send the UPS status message.

Scheduling: you can schedule UPS to do things like SelfTest, StartUp, Shutdown, run any program on your computer . by day, week and month.

Status recording: allows to view the input / output current, battery, storage of UPS operations as required.

Execute the command: the program allows to create commands to run on demand, so you can tell the computer to run one or more commands after the UPS logs an active event, or run any command be set on a specific date.

Send notice: Although it is not near the device, the administrator can still receive information and warnings about UPS due to automatic sending by email or text message.

Security: Activate this mode to limit program access. With a single machine, you won't see much performance but in a network environment, especially the server system, the security feature will prevent invalid access to the system.

Remote control: this is really a practical feature in the network environment (LAN / WAN). Sit in one place but you can control both the UPS system, work and control many UPS of the same type.

All UPS software fully supports the Windows operating system versions; some support both Linux, Netware and others. The software of different brands has some less detailed details, but not significantly, the typical feature is the sending of notifications, the shutdown of the operating system and the UPS.

### How to control the UPS remotely?

Most software fully supports the features as stated, but the mechanism of working in the network is different. There is software that only supports LAN, has a program that allows control over WAN. Please try some of the software below.

UPSmart comes with the Numeric Digital UPS HP 3000 (ID: A0512\_58) that operates according to the server management mechanism of the client by notifying and controlling client shutdown after a predetermined time. The client version simply works as a service running in the background.

Attached to UPS PCM VGD-3000 is UPSMON-Plus for single machines and UPSMON-Plus Network managed via LAN. The software only fully supports control features for networked computers, together with UPS; With other machines, the software can only send notifications. The computer directly connected to the UPS via RS232 interface will install the UPSMON-Plus Network Server version, the remaining machines install the slave version, supporting more functions than the UPSmart Client allows more flexible management.

Winpower Manager is a powerful program that comes with the Numeric Digital 1000 Plus UPS. All computers on the network with this program installed have the same rights. Of course, to be able to use the program from any machine requires a simultaneous password must be accepted from the administrator. The program supports both WAN.

UPS Soconec Sicon UPSilon comes with the same mechanism of Winpower Manager but only supports LAN, the interface is quite nice and intuitive.

The software installed is easy, detailed instructions in the document.

Hope you take advantage of these utilities for more effective management.

**Lavi Trung**

You finished reading the article "**Remote UPS management via network**" edited by the [TipsMake](#) team. We hope this article has provided you with many useful tech tips and tricks. You can search for similar articles on tips and guides. Thank you for reading and for following us regularly.