

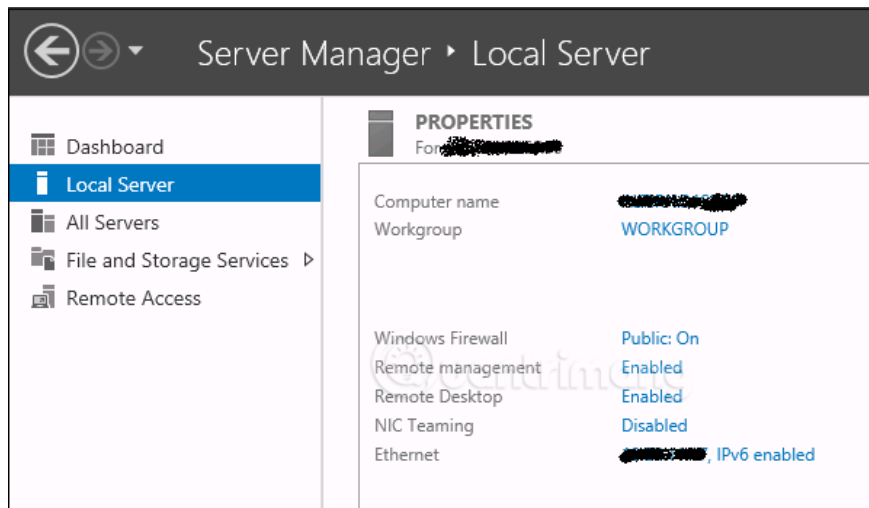
Remote management on Windows Server 2012 with Remote Management Service

Remote Management Service (Remote Management Service) is one of the most important parts related to Windows Server 2012 administration. Server administration is done through Windows Management Instrumentation (WMI). WMI instructions can be sent via the WinRM 'Remote Management' network.

Remote Management Service (Remote Management Service) is one of the most important parts related to Windows Server 2012 administration. Server administration is done through Windows Management Instrumentation (WMI). WMI instructions can be sent via the WinRM 'Remote Management' network.

Turn on the remote driver on Windows Server 2012

By default, this utility is enabled, you can check it by going to **Server Manager > Local Server** :

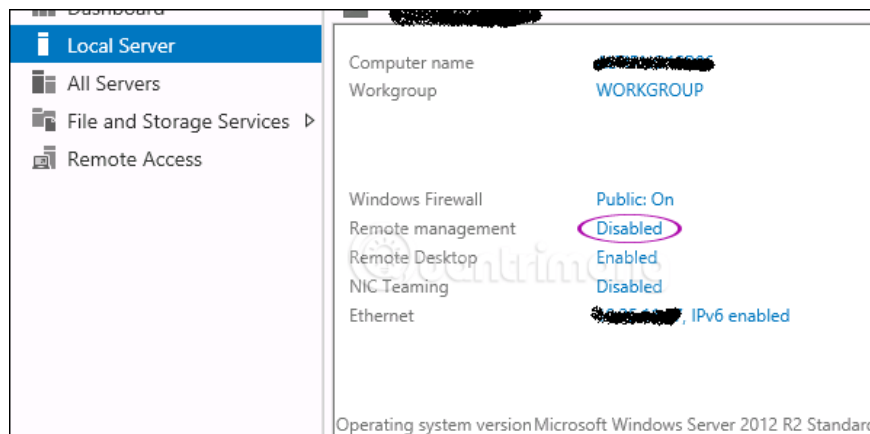


In case Remote Management Service is turned off, you can reactivate by opening PowerShell (with Admin rights) and entering `Enable-PSRemoting` as follows:

```
Administrator: Windows PowerShell
Windows PowerShell
Copyright (C) Microsoft Corporation. All rights reserved.

PS C:\WINDOWS\system32> Enable-PSRemoting
WinRM is already set up to receive requests on this computer.
WinRM is already set up for remote management on this computer.
PS C:\WINDOWS\system32>
```

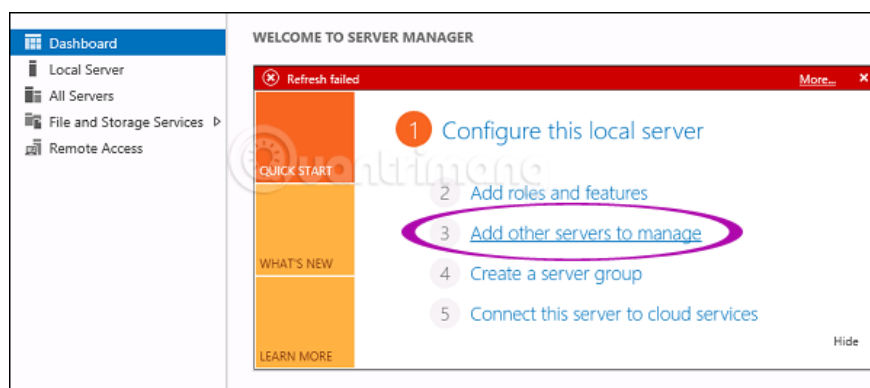
Another way to enable this utility, click **Server Manager** > **Local Server** > click **Disabled** at the **Remote management** line, select **Enable** .



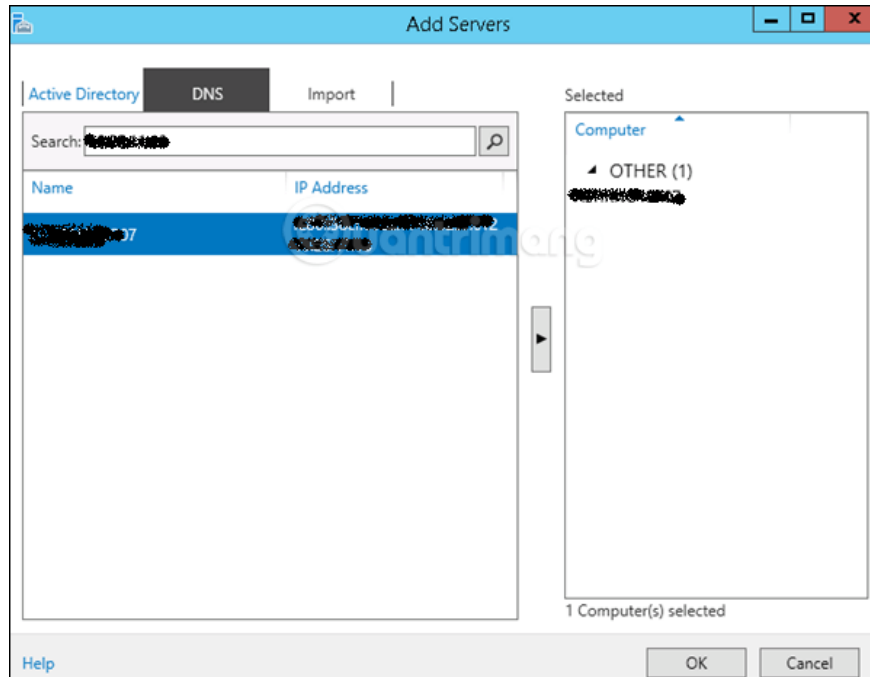
Add Server for Remote Management

To add other servers to the remote, follow these steps:

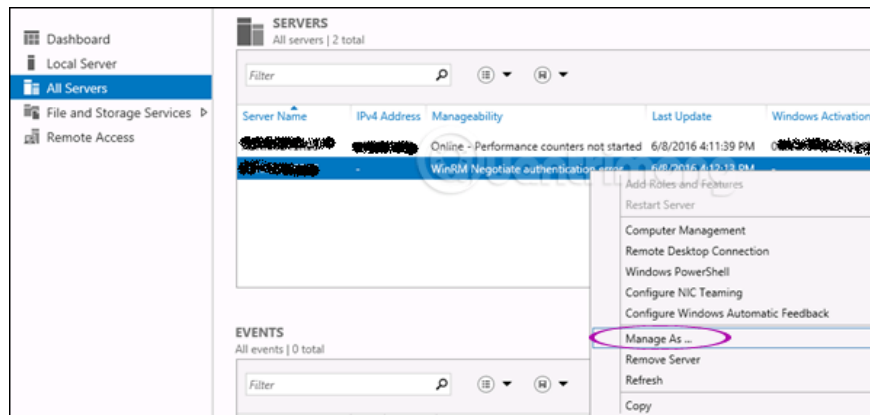
Step 1: Open **Server Manager** > **Dashboard** > select **Add other servers to manage** .



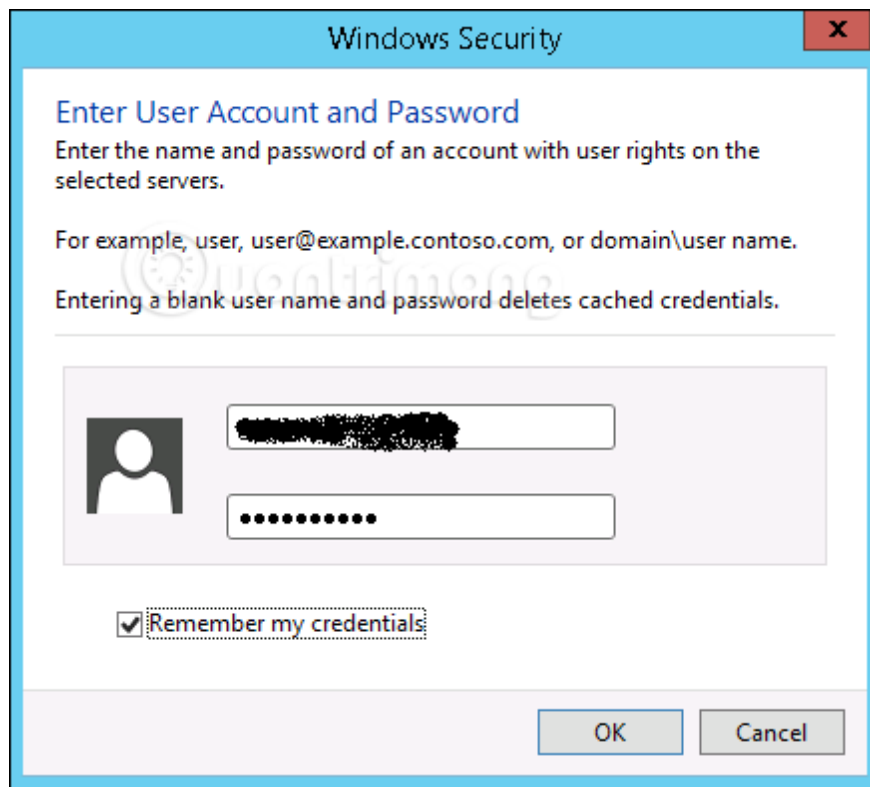
Step 2: If the server is connected to the domain, you add the Active Directory option, in the example below the server is not connected, so the user selects the second option DNS. In the Search box> enter the IP of the server you want to add> click the small arrow (turn to the right)> OK.



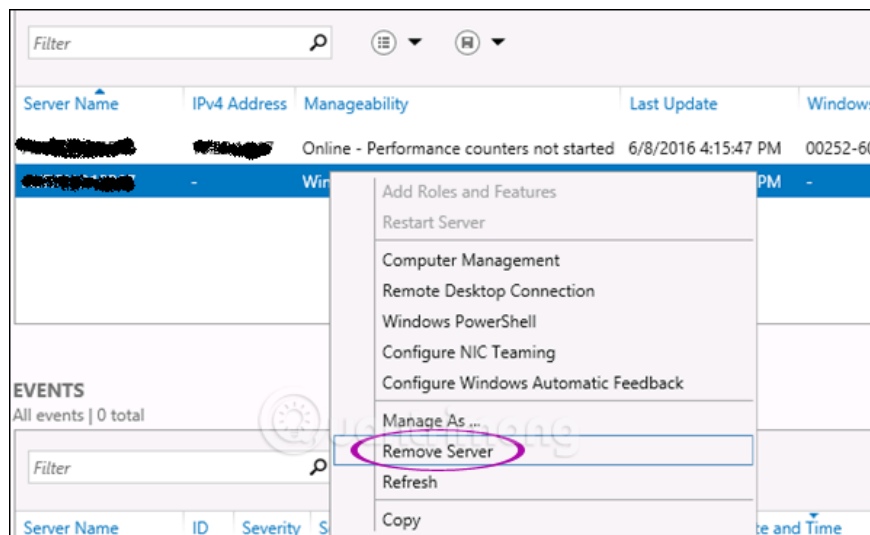
Step 3: Open Server Manager> select All Servers, you will see all the servers you have added. Because the server in the image is in the World Group, the right-click server on the server, select Manage As:



Step 4: Enter the credentials of the remote server including account name and password> click OK.



To delete an added server, right-click on the server and select Remove Server.



See more:

1. Instructions on how to use PowerShell in Windows Server 2012
2. Install Role, configure role on Windows Server 2012
3. Instructions for installing Windows Server 2012 step by step

You finished reading the article "**Remote management on Windows Server 2012 with Remote Management Service**" edited by the [TipsMake](#) team. We hope this article has provided you with many useful tech tips and tricks. You can search for similar articles on tips and guides. Thank you for reading and for following us regularly.

