

# Remote Desktop controls other computers in the LAN

Use Remote Desktop to start a remote connection. Remote Desktop is a great way to work all computer systems from a central computer.

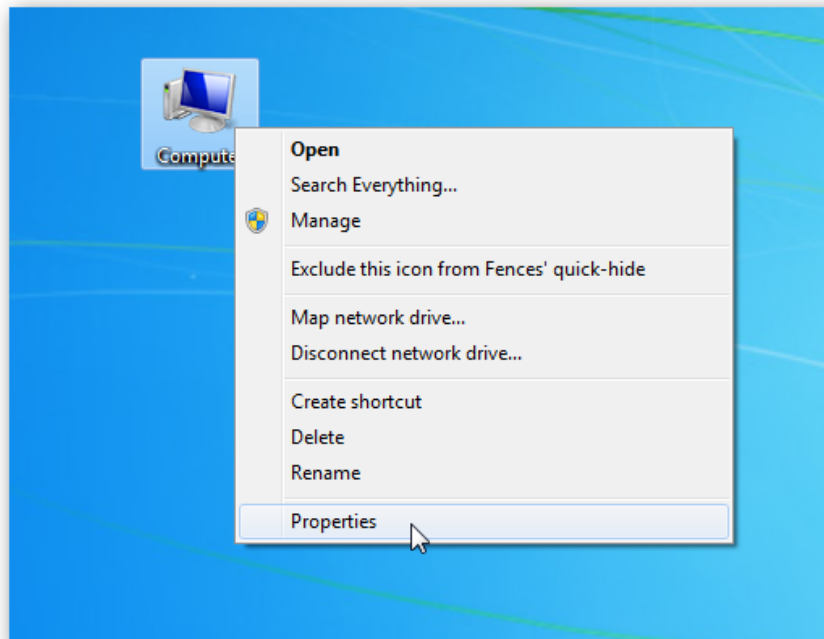
If you have a small home or office with computers on the same LAN, you might want to work on all computers from your computer. Today we will learn about **the Remote Desktop feature in Windows** that allows you to connect to computers on the same LAN on XP, Vista, and Windows 7.

You need a more mobile solution, control your computer via the Internet, share data, . the TeamViewer software is a very good choice!

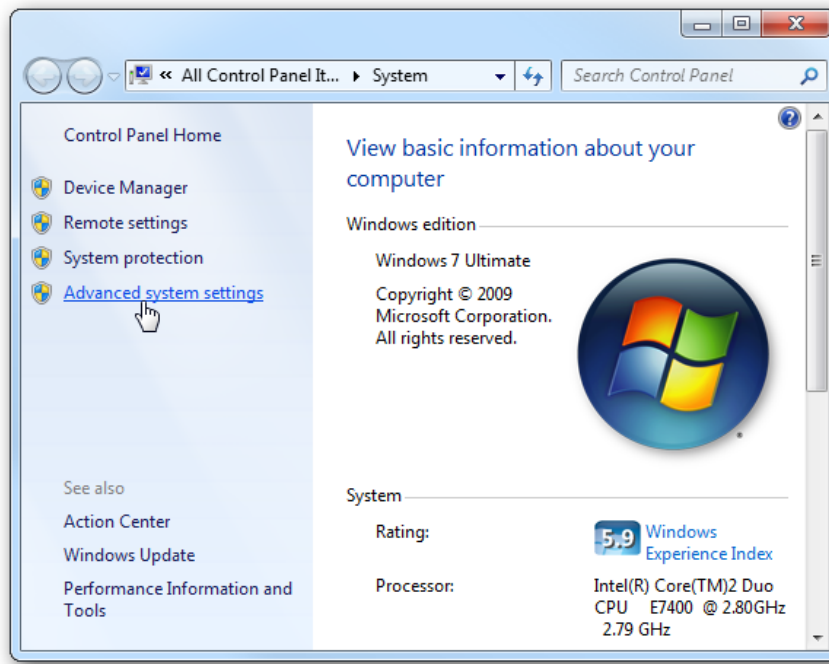
## Enable Remote Desktop in Vista and Windows 7

---

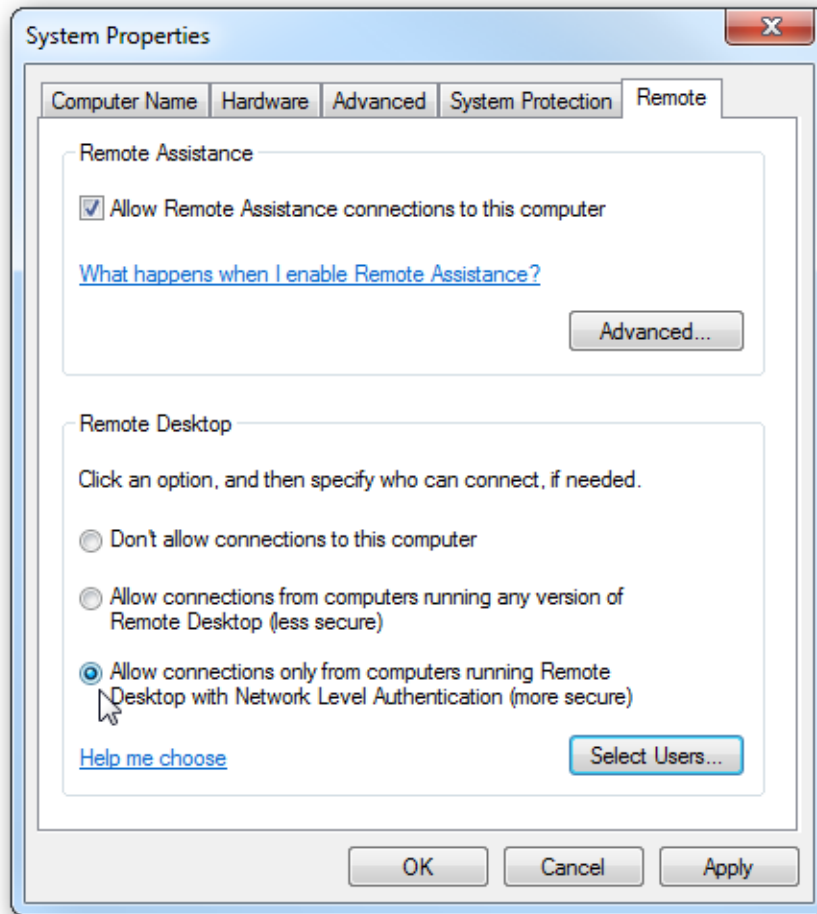
The first thing we need to do is **enable Remote Desktop** on a Windows 7 or Vista computer. Right-click on the **Computer** icon on the desktop or from the Start menu and select **Properties** .



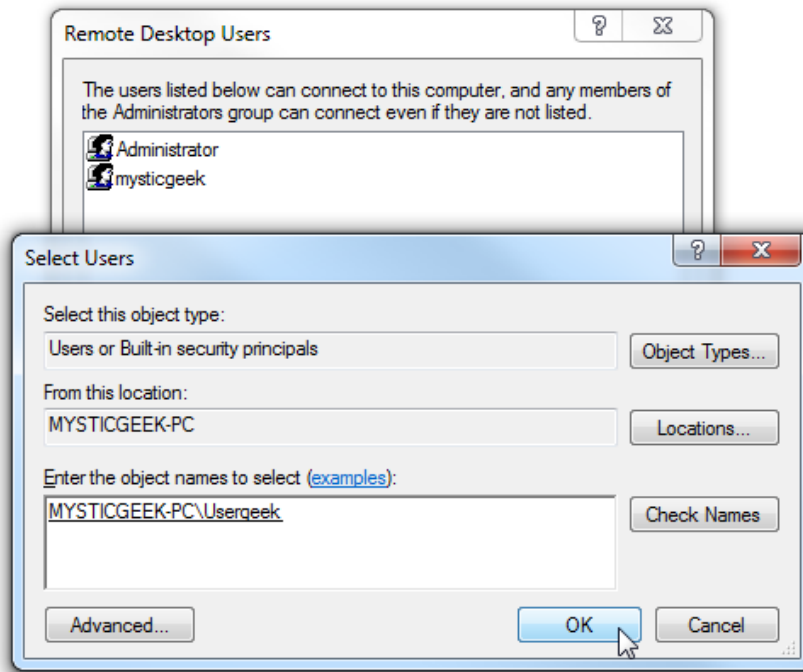
Now click on the *Advanced system settings link* .



Click the **Remote** tab and under **Remote Desktop** , select **Allow connections only from computers running Remote Desktop with Network Level Authentication (more secure)**.



You can also choose what users on the network will have Remote Desktop access to. For example, printer, folder, etc. or all the rights to operate on a computer.

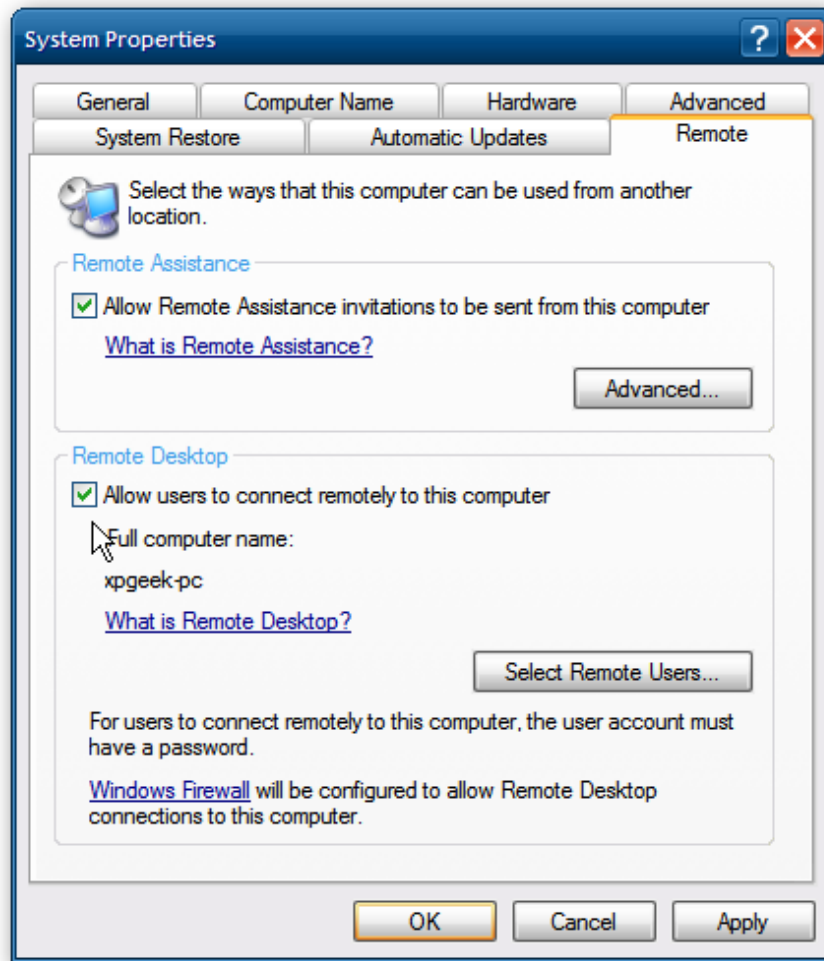


## Enable the feature on Win XP

---

Using the **Remote Desktop** function for a **Windows XP computer** is basically the same as on Windows 7 or Vista.

**Right-click My Computer** and select **Properties** , click the **Remote** tab and in the Remote Desktop section, click the box next to **Allow users to connect Remotely to this computer**.



## Use Remote Desktop

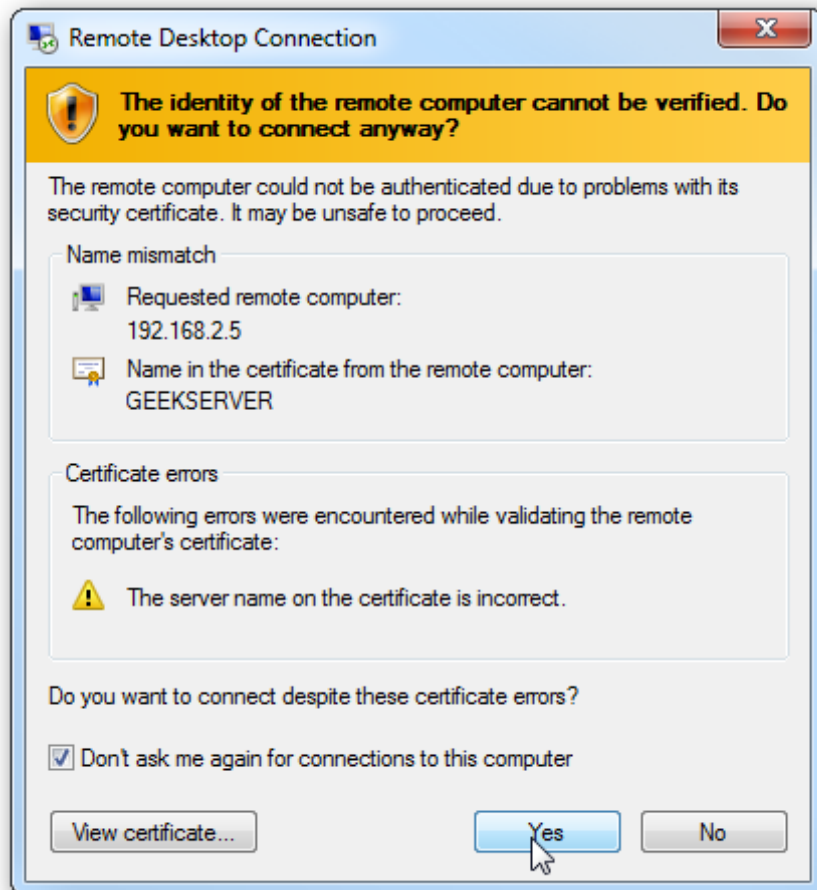
---

Now when a colleague or family member needs help, or you want to work on computers at other locations and don't want the site on each computer, you can use the Remote desktop feature. for remote control. **Turn on the Remote Desktop program** and **enter the name or IP address of the computer you want to access** .

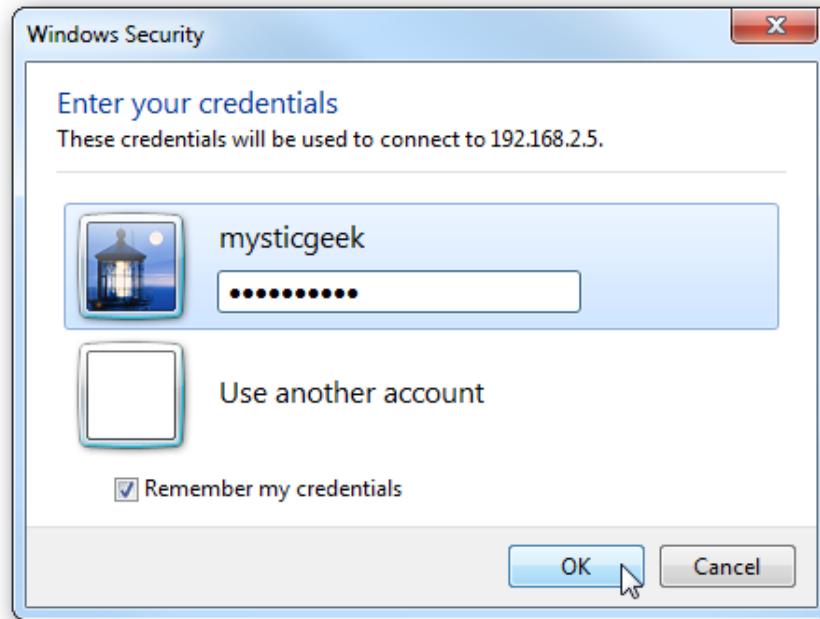
How to find the IP of the computer to access: **How to check the IP address of the computer easily - IP is the Local IP part!**



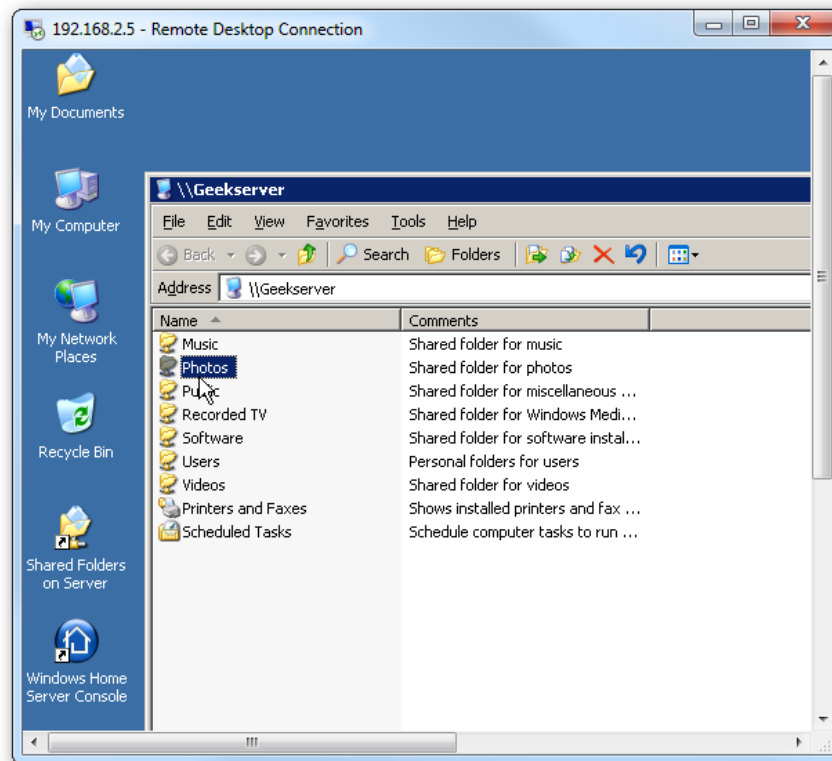
The first time you access the remote computer, you can get a security screen that you will want to allow and can choose to not show it again.



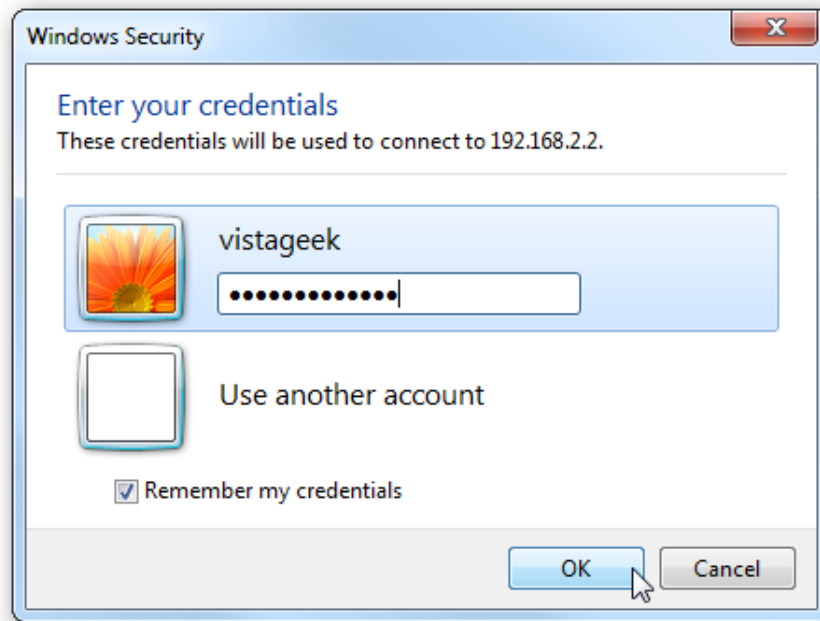
When you log in, you will need to type in the username and password before connecting. The password and username are for the device you want to access.



Now you can work on the other computer completely normal.



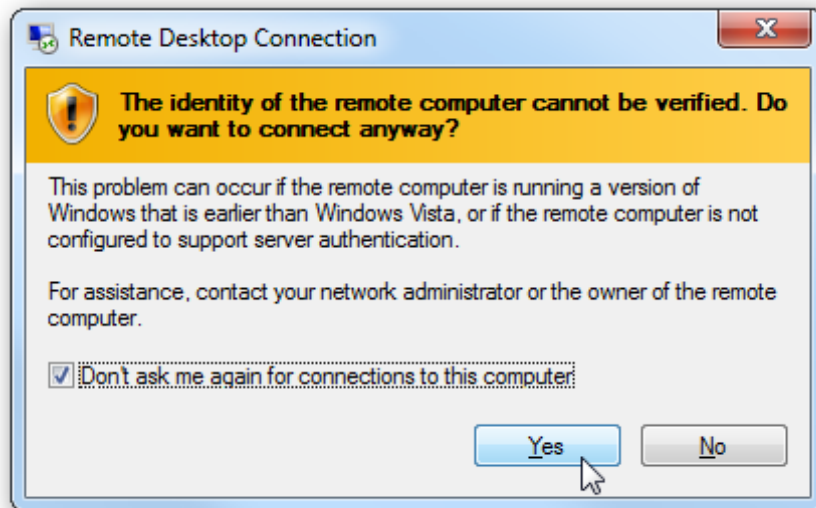
Logging in to a Vista computer is similar... entering the username and password for that machine.



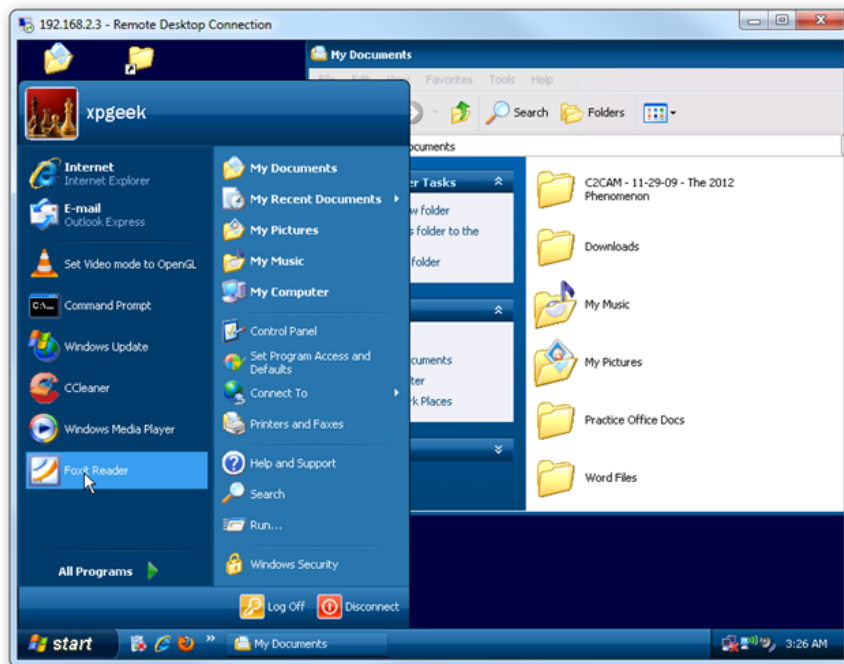
And then you might be able to start working on a Vista computer.



Here we are remote access from a Windows 7 computer to an XP computer on the home network, and a security notice is displayed. It's a bit different than when remote access to a server, but again, you can choose not to have it pop up every time you connect.



Work from a distance on a remote computer using Windows XP .

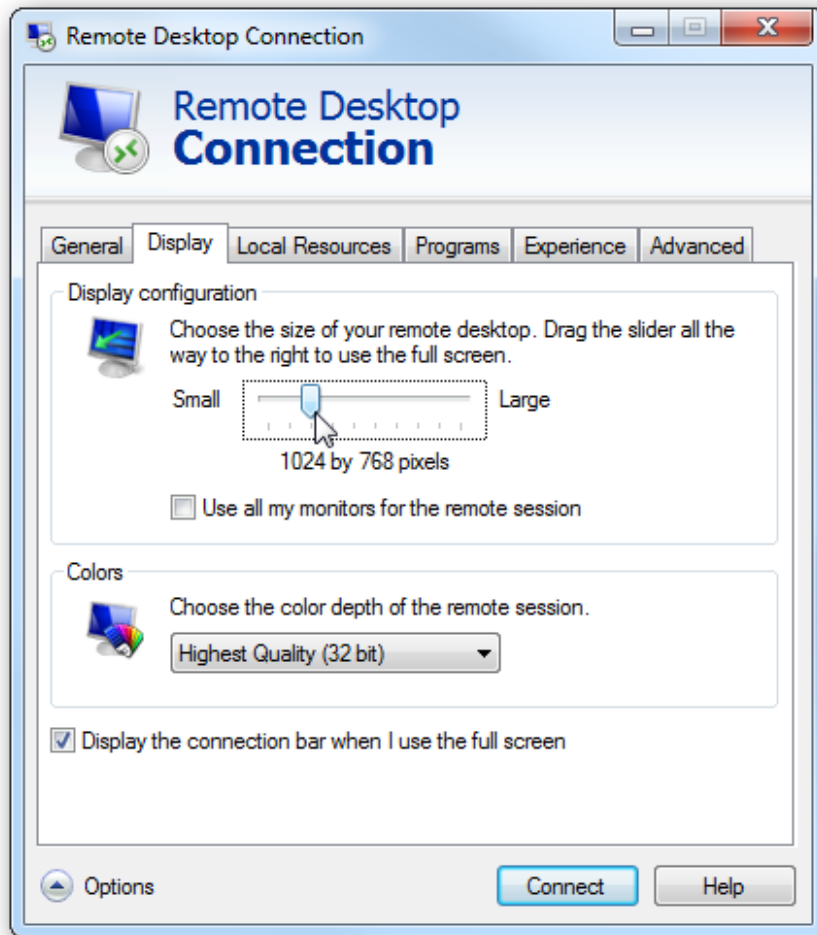


## Option

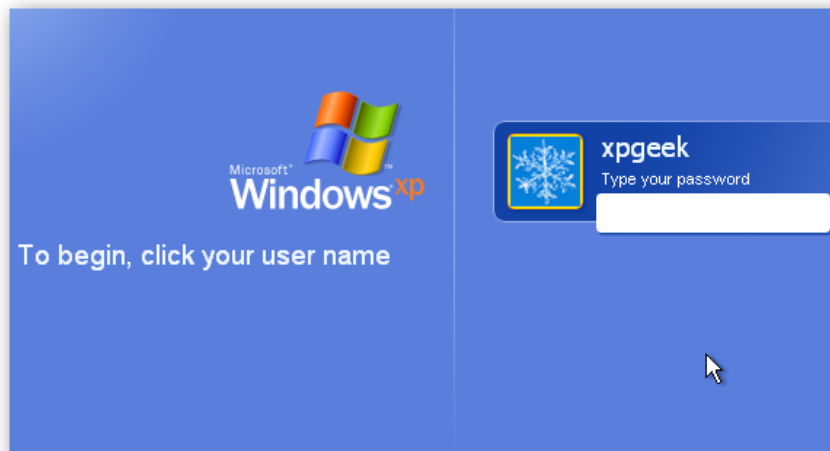
---

When remote access to a machine, there are various options that you can choose before starting Remote Desktop. You will need to experiment with these settings to find what's best for you.

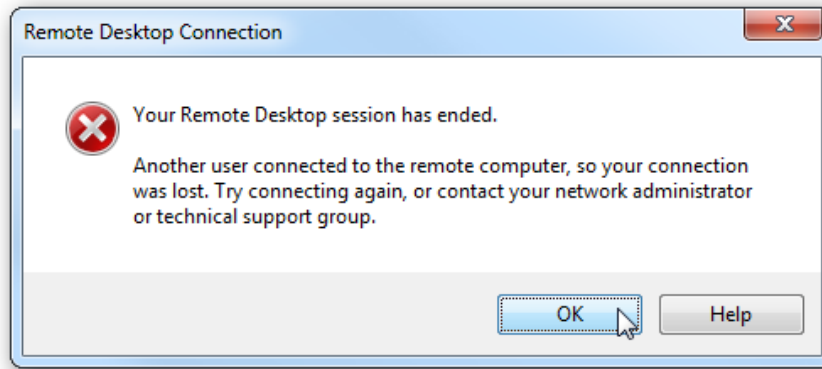
If you're looking for ways to make the process faster, especially on older hardware, reduce the display size and color of the remote connection (as shown below). It may not be very nice, but you can get the job done faster.



While you are logged in to another computer, users on the other computer will be locked out.



So make sure the person sitting at your computer's access and working doesn't try to log in during your session because they will push you out.



## Conclude

---

You can use Remote Desktop to start a remote connection with any version of Windows. However, you cannot use it to connect to computers running Starter or Home editions.

Using Remote Desktop is a great way to work on all computer systems from a central computer.

Ps: **Remote Desktop** is also a tool to help you when using VPS - access via the Internet very well!

You finished reading the article "**Remote Desktop controls other computers in the LAN**" edited by the [TipsMake](#) team. We hope this article has provided you with many useful tech tips and tricks. You can search for similar articles on tips and guides. Thank you for reading and for following us regularly.

---