

# Reinstall the Wi-Fi driver on Windows 10.

You are experiencing problems with Wi-Fi on your Windows 10 computer. Your Windows 10 computer cannot connect to Wi-Fi or access the network. To fix this, you can reinstall the Wi-Fi driver on your Windows 10 computer.

As is known, on laptops running Windows 10, users can easily create a Wi-Fi hotspot to share with devices such as phones or laptops to access the internet. However, if Windows 10 has a Wi-Fi connection error, creating a Wi-Fi hotspot will not be possible.

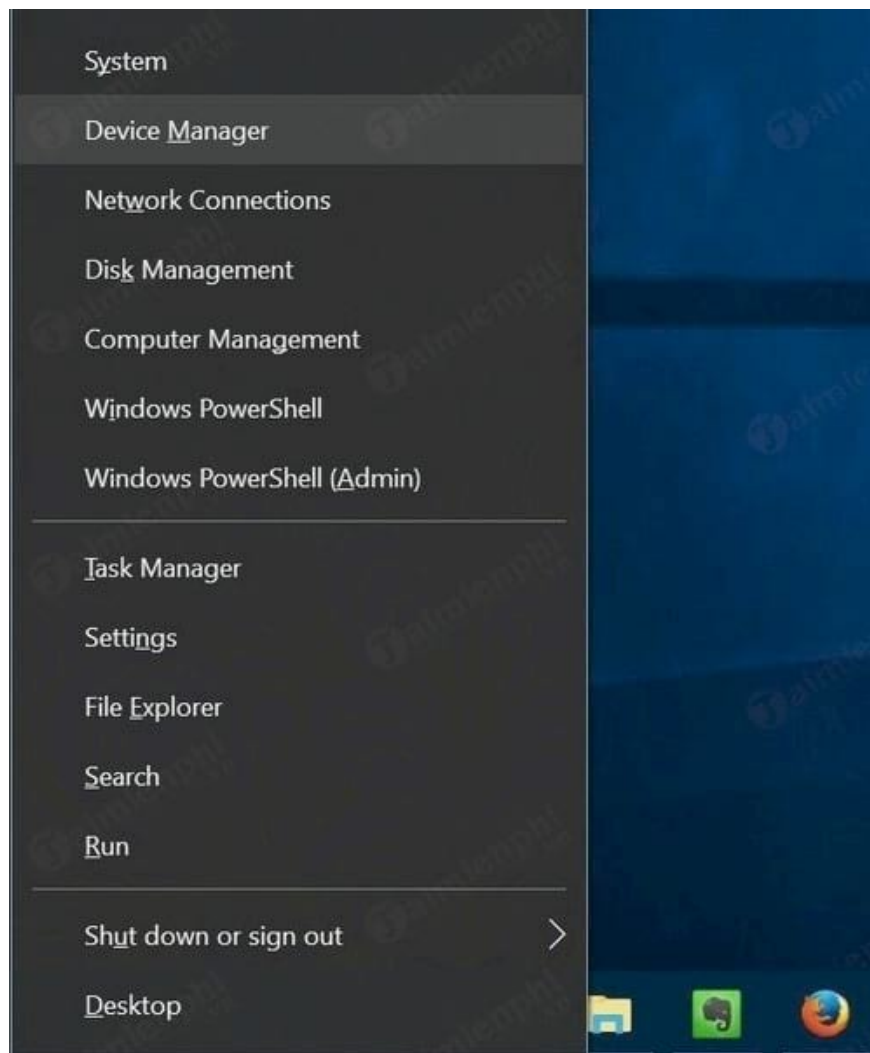


**You may be experiencing Windows 10 internet and Wi-Fi connection** issues on your Windows 10 computer. Your Windows 10 computer may not be able to detect available Wi-Fi networks, or you may be experiencing internet errors preventing you from connecting to wireless networks. Sometimes, your Wi-Fi adapter may refuse to turn on or off.

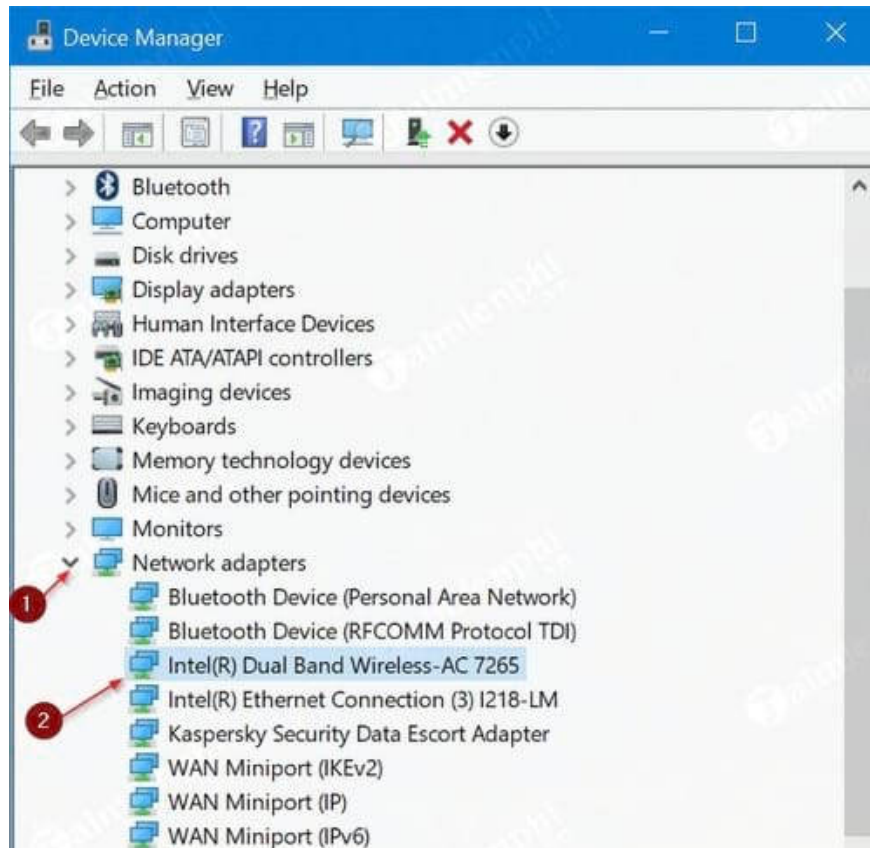
To fix most Wi-Fi-related problems on your computer, the most effective solution is to reinstall the Wi-Fi driver on Windows 10. The process of reinstalling the wireless network driver involves downloading a copy of the new driver, uninstalling the current driver on your computer, and then installing the new driver.

## **Steps to reinstall the Wifi driver on Windows 10**

*Step 1:* Open Device Manager. To open Device Manager, **right-click the Start** button in the bottom left corner of the screen and select **Device Manager** .

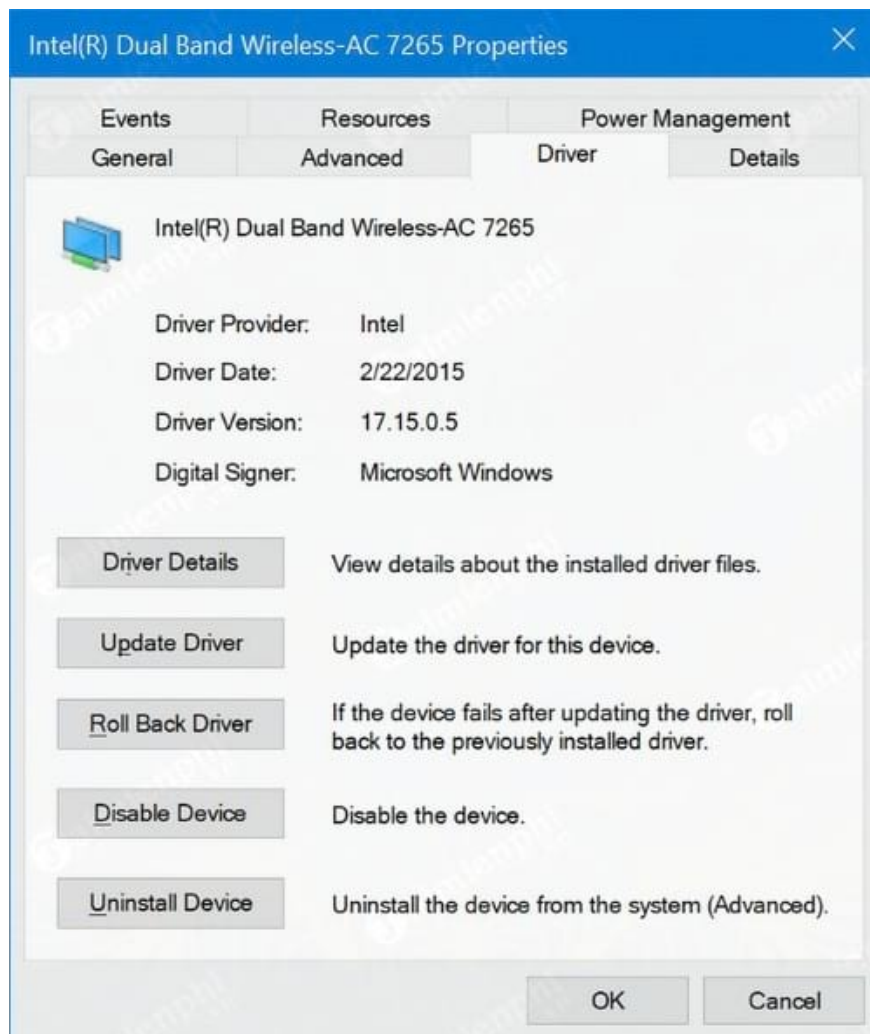


*Step 2:* In the Device Manager window, expand the **Network Adapters** section to view all network adapters, including **wireless adapters**. Wi-Fi adapters usually have the word "wireless" added to their name.



**Note** the name and number of the Wireless Adapter because you will need to download the Wireless Adapter driver before uninstalling the current Wireless Adapter driver. After uninstalling the current wireless network driver, the Wifi Adapter will stop working, so you won't be able to download a new driver unless you use an Ethernet connection.

To check the driver version number, **right-click** on the **Wireless driver** in Device Manager => **Network adapters** , click **Properties** , and then select the Driver tab.



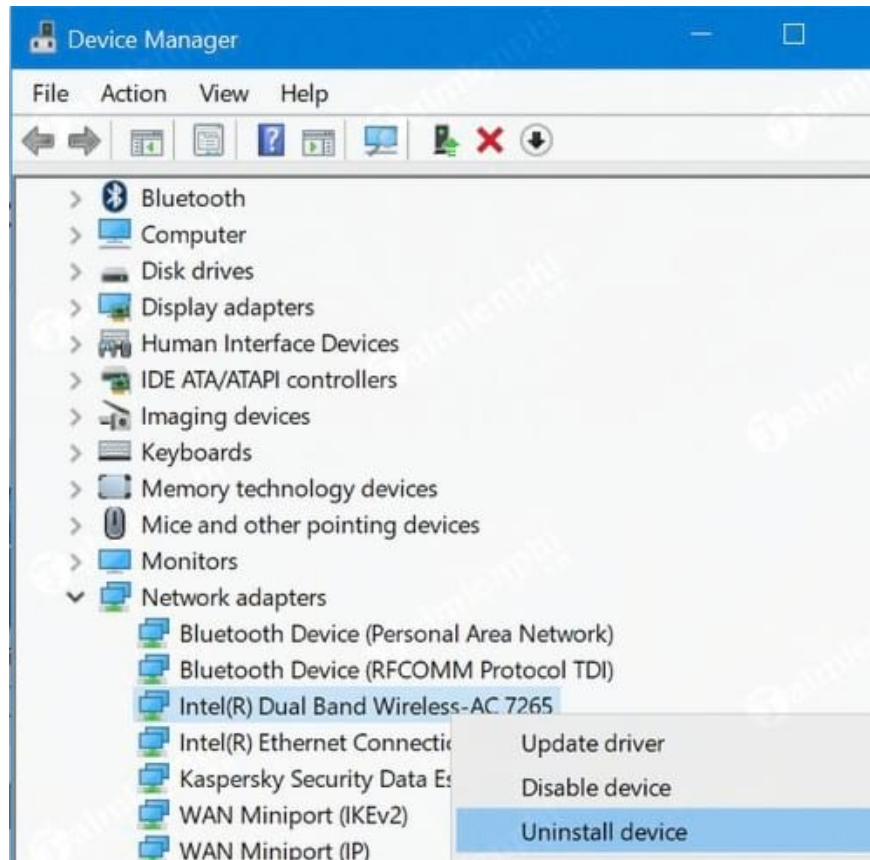
*Step 3:* Access the **Wireless Adapter** homepage or your **computer manufacturer's homepage** to **download the Wifi driver** .

**Make sure** you download the correct Wireless Adapter driver.

Alternatively, if you have a wired network connection, you can use software that automatically updates drivers on your computer, such as Driver Booster or DriverEasy. Both Driver Booster and DriverEasy update your computer drivers quickly and accurately.

*Step 4:* In the Device Manager window, right-click on **Wireless Adapter** and select **Uninstall device** .

On older versions of Windows 10 (build 10240), you'll see an Uninstall option instead of Uninstall device.



*Step 5:* A confirmation dialog box will appear; click **Uninstall** to remove the driver.



*Step 6:* After uninstalling the driver, save what you were doing and restart your computer to reinstall the Wi-Fi driver on Windows 10.

*Step 7:* Run the new driver installation file that you downloaded earlier, and follow the on-screen instructions to install the driver.



If prompted, restart your computer to complete the driver installation process.

After successfully reinstalling the Wi-Fi driver on Windows 10, you can now click the Wi-Fi icon on the Taskbar to see all available Wi-Fi connections. If you don't have an internet connection, try creating a Wi-Fi hotspot on your Android device. To create a Wi-Fi hotspot on your Android phone, you'll need to follow a few steps on your Samsung Galaxy, Oppo, or HTC phone. The connection speed on Windows 10 depends on your device's internet connection.

If you're using Windows 10 and want to connect to a hidden Wi-Fi network set up by someone else to keep your home Wi-Fi network private, you can refer to the method for connecting your computer to a hidden Wi-Fi network that Tai mien phi has shared to easily access this network.

Computer connection problems such as not being able to connect to Wi-Fi are also common. Try these troubleshooting steps: restarting your computer, restarting your modem, and reconnecting to a Wi-Fi network.

You finished reading the article "**Reinstall the Wi-Fi driver on Windows 10.**" edited by the [TipsMake](#) team. We hope this article has provided you with many useful tech tips and tricks. You can search for similar articles on tips and guides. Thank you for reading and for following us regularly.