

# What is Referee Camera Technology in FIFA Club World Cup?

FIFA has for the first time used a body-cam mounted on the referee's ear to record live images in front of them.

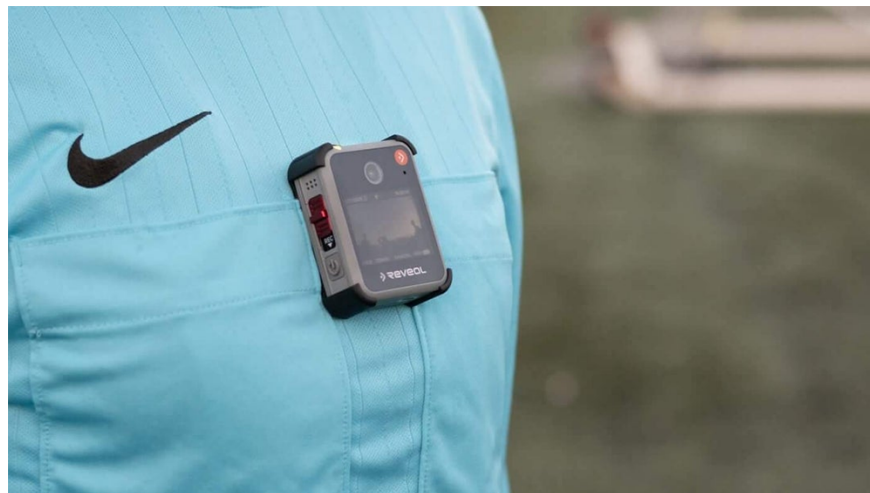
Technology will help fans experience every match in the FIFA Club World Cup 2025 from the referee's perspective, while AI will help detect offside more quickly, and goalkeepers will be penalized if they waste more than 8 seconds. There are many changes in this major tournament, and one of them is the Referee Camera,

The goalkeeper will only have a maximum of 8 seconds to kick the ball, otherwise a corner kick will be awarded to the opponent.

## What is a referee body camera and how does it work?

FIFA has for the first time used a body-cam mounted on the referee's ear to record live images in front of them.

These images will be shown live on television, but only if they do not involve controversial situations. Moments such as penalties, disallowed goals, or serious fouls will be removed from the replay from this camera.



Viewers will have the opportunity to admire unique perspectives of situations such as: scoring, blocking, crossing, rushing and collision.

This feature is only deployed at 6 selected NFL stadiums hosting matches: Atlanta, Charlotte, Los Angeles, Miami, East Rutherford, Philadelphia and Seattle.

Mr. Pierluigi Collina, Chairman of the FIFA Referees Committee, affirmed that this is a way to create a new experience for TV viewers and is also a testing phase before long-term application.

## How does FIFA use AI to detect offside?

While offside assist technology is not new, at the 2025 FIFA Club World Cup, FIFA is deploying an upgraded version called "Enhanced Semi-Automated Offside Technology" using artificial intelligence (AI). With 16 dedicated cameras that will track every movement on the pitch.

The images are analyzed by AI software, and if an offside player touches the ball, the system automatically alerts the referee immediately.

This mechanism helps:

1. Shorten decision making time.
2. Avoid allowing play to continue when there is a clear offside that has not been checked by VAR.
3. For the first time, VAR images of offside decisions will be shown on large screens in stadiums for spectators to watch – increasing transparency and appeal.

## New regulation on time limit for goalkeepers

Previously, the rule stated that goalkeepers could only hold the ball for a maximum of six seconds, but it was rarely severely punished. At this year's tournament, FIFA asked referees to apply it more strictly:

1. After 5 seconds, the referee will raise his hand as a warning.
2. If the goalkeeper fails to kick the ball within 8 seconds, the opposing team is awarded a corner kick (formerly an indirect free kick in the penalty area).

This rule is intended to prevent time wasting and speed up the game, especially in the final minutes when the leading team tries to stall for time.

You finished reading the article "**What is Referee Camera Technology in FIFA Club World Cup?**" edited by the [TipsMake](#) team. We hope this article has provided you with many useful tech tips and tricks. You can search for similar articles on tips and guides. Thank you for reading and for following us regularly.