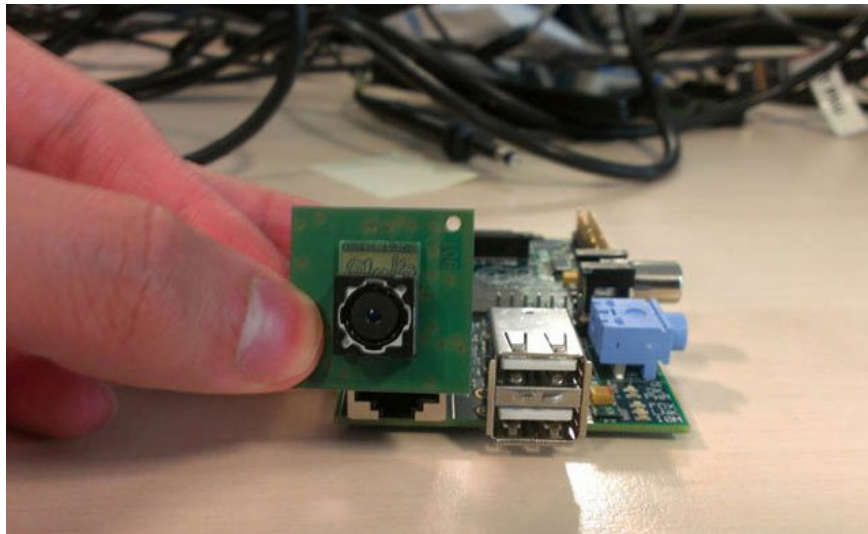


Raspberry Pi 'pepper' calculator will have additional cameras

Raspberry Pi development team has just said that they are working to equip this super cheap 'pepper' computer with an integrated camera unit.

Raspberry Pi development team has just said that they are working to equip this super cheap 'pepper' computer with an integrated camera unit.

>>> **The first Raspberry Pi computer shipped**



The prototype of the current Raspberry Pi version can be equipped with a 14-megapixel camera directly connected via CSI pins.

However, developers say they can reduce the quality of the camera before release, to ensure a reasonable price factor, because a 14-megapixel sensor can give rise to unsuitable prices. with a computer 35 USD.

It is expected that additional camera parts will be released later this year, and the official selling price has not been disclosed.

With a super-cheap price of \$ 35, the Raspberry Pi has sparked a tech market with a configuration of 700MHz processor, 256MB of RAM, an SD card slot, 2 USB ports, an Ethernet jack and an HDMI and RCA output port. , install the Linux operating system.

You finished reading the article "**Raspberry Pi 'pepper' calculator will have additional cameras**" edited by the [TipsMake](#) team. We hope this article has provided you with many useful tech tips and tricks. You can search for similar articles on tips and guides. Thank you for reading and for following us regularly.

