

Quickly fix the 'Your connection was interrupted' error on Chrome

The error 'Your connection was interrupted' appears so you cannot access the site. To fix this error on Chrome, you can follow one of the instructions in the following article:

The error 'Your connection was interrupted' appears so you cannot access the site. To fix this error on Chrome, you can follow one of the instructions in the following article:

1. Check the wifi Router / modem

Check if the Power, ADSL and Ethernet lights are lit. If the light is not on, tell the operator to check the Internet connection.



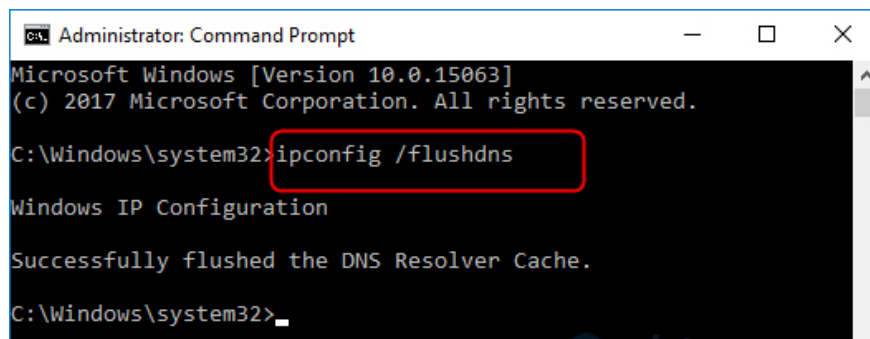
2. Delete DNS memory

Open **Command Prompt** with administrative rights.

Enter the command below into the mark in the window that appears -> press **Enter** .

1. **ipconfig / flushdns**

If the **Successfully flushed** line appears, the **DNS Resolver Cache** is successful.



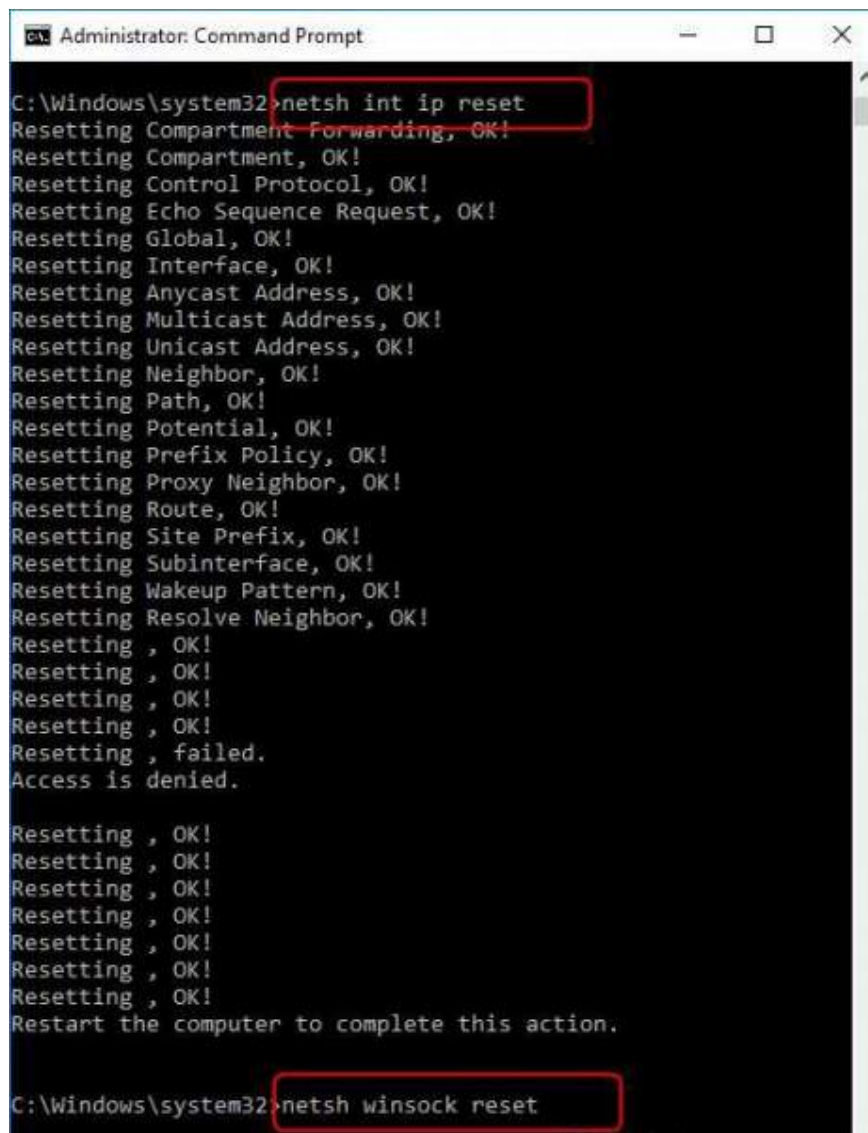
```
Administrator: Command Prompt
Microsoft Windows [Version 10.0.15063]
(c) 2017 Microsoft Corporation. All rights reserved.
C:\Windows\system32>ipconfig /flushdns
Windows IP Configuration
Successfully flushed the DNS Resolver Cache.
C:\Windows\system32>
```

Refer:

1. Instructions to open Command Prompt under Admin on Windows 8 and 10.
2. 12 ways to open CMD - Command Prompt easily on Windows 10

3. Reset internet protocol

Open **Command Prompt** with administrative rights.



```
Administrator: Command Prompt
C:\Windows\system32>netsh int ip reset
Resetting Compartment Forwarding, OK!
Resetting Compartment, OK!
Resetting Control Protocol, OK!
Resetting Echo Sequence Request, OK!
Resetting Global, OK!
Resetting Interface, OK!
Resetting Anycast Address, OK!
Resetting Multicast Address, OK!
Resetting Unicast Address, OK!
Resetting Neighbor, OK!
Resetting Path, OK!
Resetting Potential, OK!
Resetting Prefix Policy, OK!
Resetting Proxy Neighbor, OK!
Resetting Route, OK!
Resetting Site Prefix, OK!
Resetting Subinterface, OK!
Resetting Wakeup Pattern, OK!
Resetting Resolve Neighbor, OK!
Resetting , OK!
Resetting , OK!
Resetting , OK!
Resetting , OK!
Resetting , failed.
Access is denied.

Resetting , OK!
Resetting , OK!
Resetting , OK!
Resetting , OK!
Resetting , OK!
Resetting , OK!
Resetting , OK!
Restart the computer to complete this action.

C:\Windows\system32>netsh winsock reset
```

Enter the two commands below in turn. After entering each command, press Enter and wait for the execution to complete and enter the next command.

1. netsh int ip reset
2. netsh winsock reset

Finally, restart the computer.

4. Delete browsing data

With Chrome : Press the three dots button -> select **Settings** -> select **Advanced** -> click **Clear browsing data** -> select all components -> select **All time** -> click **Clear Data** .

Note: You can quickly access the browser history by pressing Ctrl + H and performing the above actions.

Clear browsing data



Basic

Advanced

Time range All time ▼

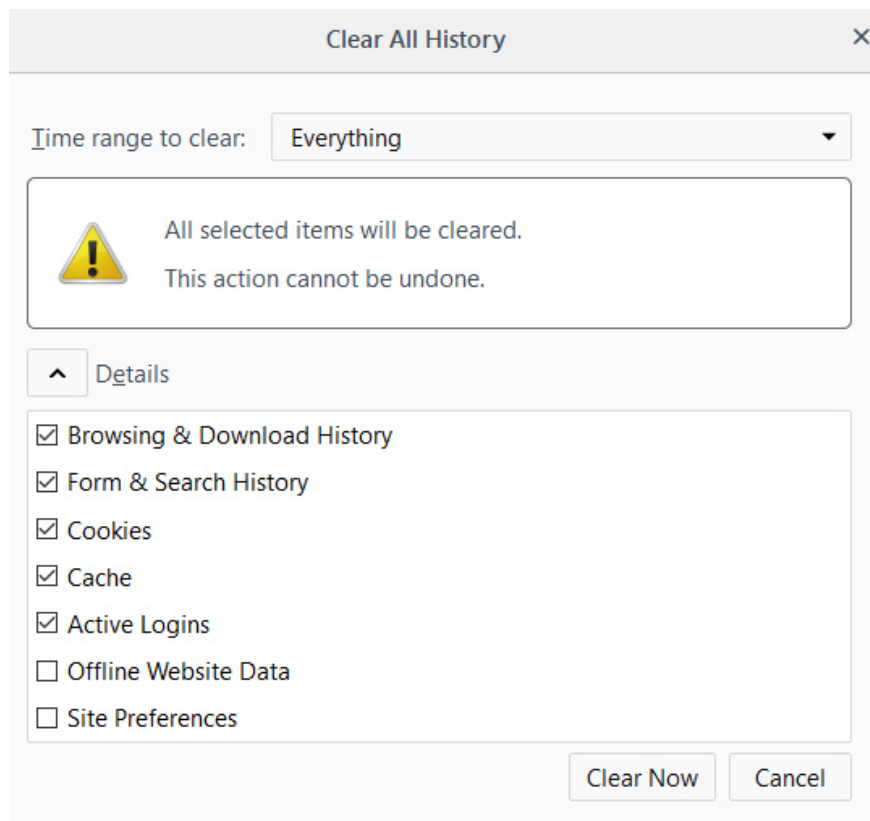
- Browsing history**
Clears history from all signed-in devices. Your Google Account may have other forms of browsing history at myactivity.google.com.
- Cookies and other site data**
Signs you out of most sites.
- Cached images and files**
Frees up 1.0 MB. Some sites may load more slowly on your next visit.

CANCEL

CLEAR DATA

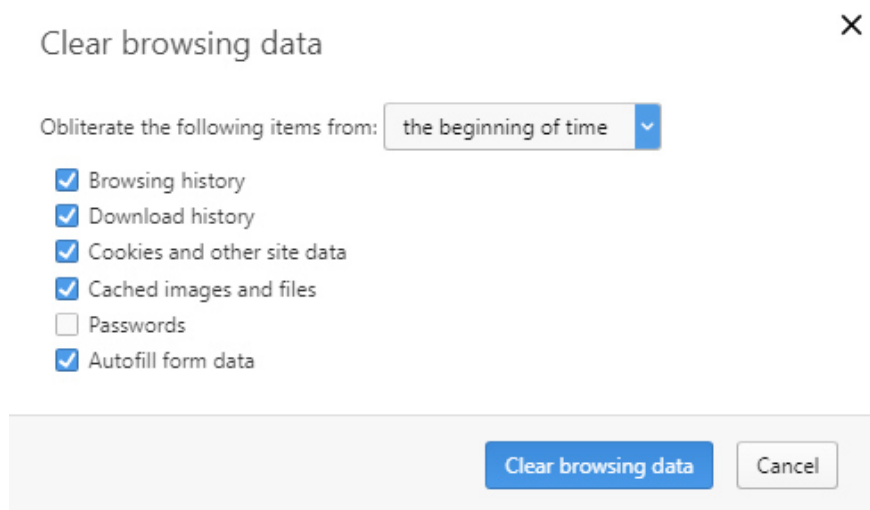
With Firefox:

Press the three bricks button -> select **Options** -> click **Privacy & Security** -> click the **clear your recent history** button in the History section -> select **Everything at Time range to clear** -> click the **Clear now** button.



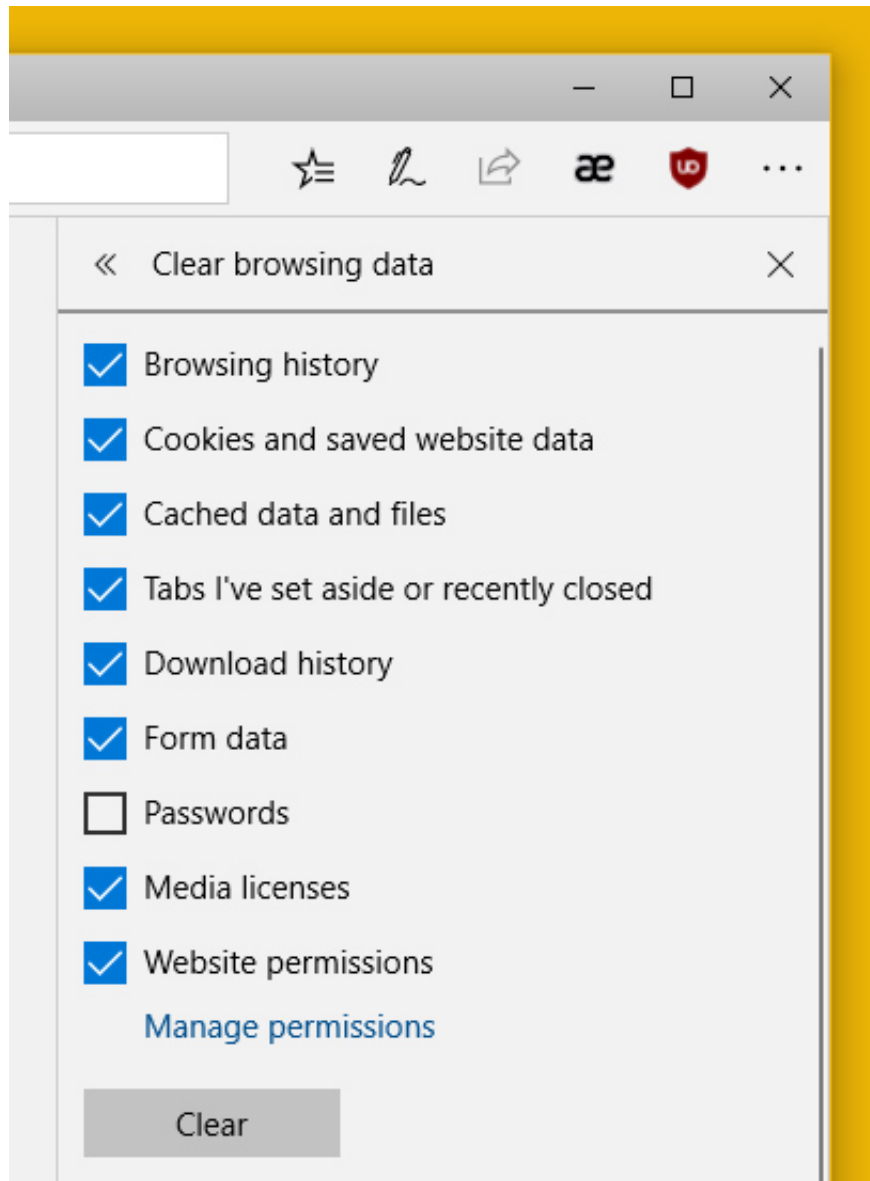
With Opera

Press **Menu** -> select **Settings** (press **Alt + P**) -> select **Privacy & security** -> select **Clear browsing data** -> select **the beginning of time** and the component you want to delete (except Passwords) -> click **Clear browsing data** .



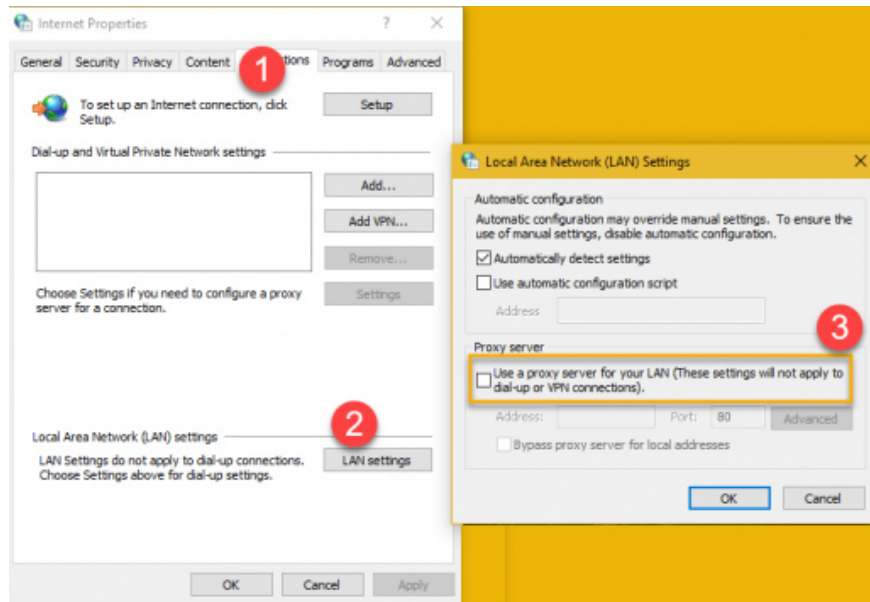
With Microsoft Edge:

Press the three dots button -> select **Settings** -> select **Choose what to clear** -> select all components (except Passwords) -> click **Clear** .



5. Check LAN settings

Disconnection may be caused by a misconfigured proxy server. To return the browser proxy server as default please do the following:



Open **Cortana** -> enter **Internet Properties** -> type **Enter** -> select the **Connections** tab -> click the **LAN settings** -> button in the new window, uncheck the **Use a proxy server for your LAN** (These settings will not apply to dial-up or VPN connections) -> click **OK** .

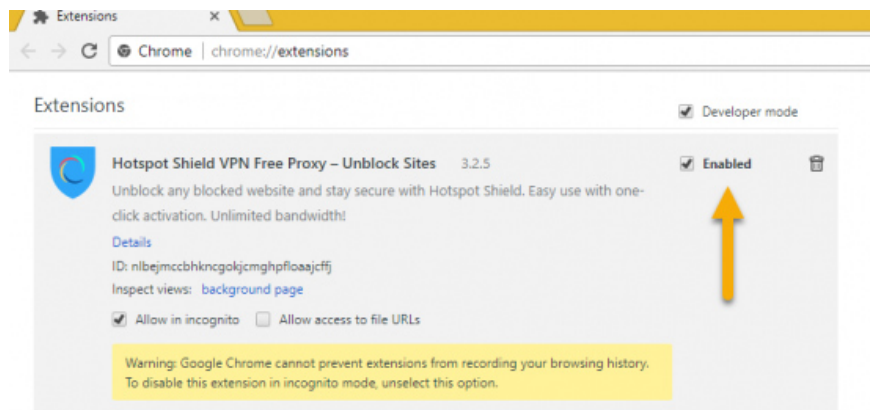
See more:

1. How to connect Proxy Servers on Windows 10 to secure Internet access

6. Delete extension

Sometimes using extensions to bypass firewalls or restrict access areas when the proxy server system expires or fails, can cause the browser to lose internet connection.

So, if you get the error 'Your connection was interrupted', try disabling the extensions by: going to the extension manager on your browser -> clicking **Disable** or unchecking **Enabled** to turn it off.



1. 10 utilities on Chrome you should not ignore

7. Change DNS server

1. How to change DNS to be able to surf faster, don't worry about being blocked
2. Speed up Internet connection by changing DNS server

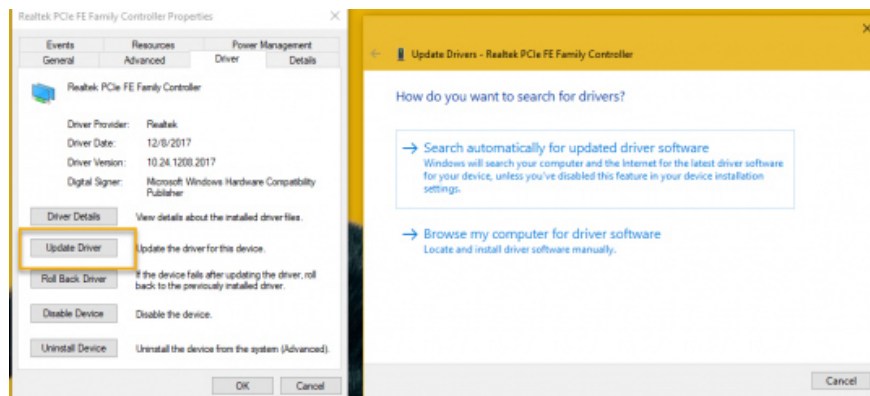
8. Reinstall the network adapter driver

An outdated or corrupted network adapter driver may also cause an 'Your connection was interrupted' error. To fix this, you must uninstall and reinstall the network adapter driver for the system.

Open the Run box by pressing **Windows + R** -> enter **devmgmt.msc** -> click **OK** and do one of two ways:

Driver update:

In the **Device Manager** window, click **Network adapters** to see the name of the network driver in use.



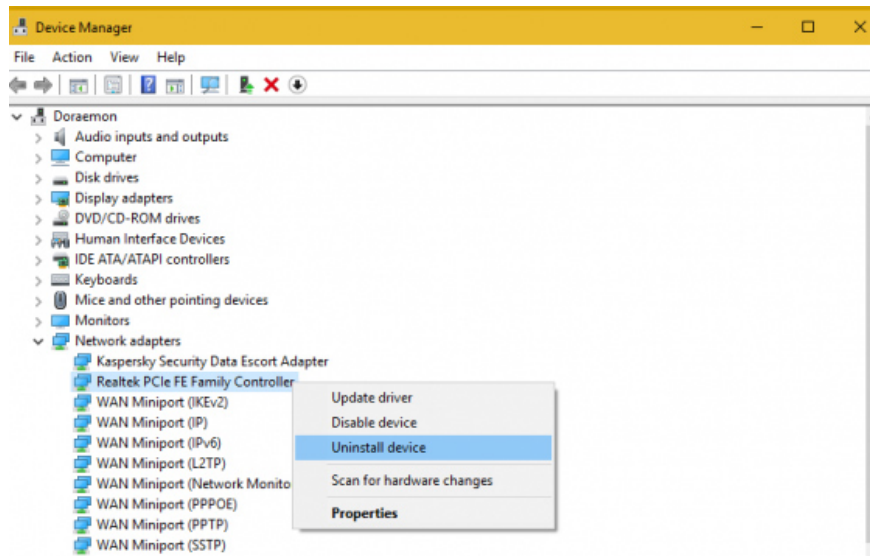
Right-click -> select **Properties** -> select **Driver** -> select **Update Drive** to update the driver:

1. Search automatically for updated driver software (automatically find and update drivers via the internet).
2. Browse my computer for driver software (browse to the file to install the latest driver saved on the computer to update).

Uninstall and install new:

Uninstall: Save the name of the network adapter driver -> right-click the driver -> select **Uninstall device** -> select **Uninstall** .

New installation: Open the network card manufacturer's website and download the latest version of the network card line on the device (saved earlier) -> download and install it manually.



1. How to automatically update drivers on Windows using SnailDriver
2. The best driver update software for computers
3. Instructions for installing drivers for Windows with DriverPack Solution
4. Instructions for finding and downloading drivers for the computer in 3 steps
5. 5 basic ways to update, update drivers for computers

You finished reading the article "**Quickly fix the 'Your connection was interrupted' error on Chrome**" edited by the [TipsMake](#) team. We hope this article has provided you with many useful tech tips and tricks. You can search for similar articles on tips and guides. Thank you for reading and for following us regularly.