

Quickly fix the 'Your connection is not private' error on Chrome browser.

What causes the 'Your connection is not private' error on Chrome browser? How can you fix it? TipsMake.com will guide you now. Please read on.

As we all know, Google Chrome is the world's most popular and fastest web browser for Windows PCs and mobile phones. Google Chrome is based on the open-source Chromium project. It's available for Windows, Mac OS X, Linux, Android, and iOS operating systems. Google Chrome employs a sandbox-based approach to web security. Each open webpage runs as a separate process, preventing malicious code on one page from affecting others (or the computer's operating system in general). The browser also supports web standards such as HTML5 and cascading stylesheets (CSS).

Therefore, if you are using the Google Chrome browser on a desktop computer, laptop, or Android device and encounter the error "**Your connection is not private**" or "`Net::ERR_CERT_DATE_INVALID`", you will obviously want a 100% effective method to eliminate this annoying problem.

Usually, simply clicking **Advanced** > **Accessing an unsafe website** allows you to continue browsing. But in some cases, the solution isn't that straightforward.

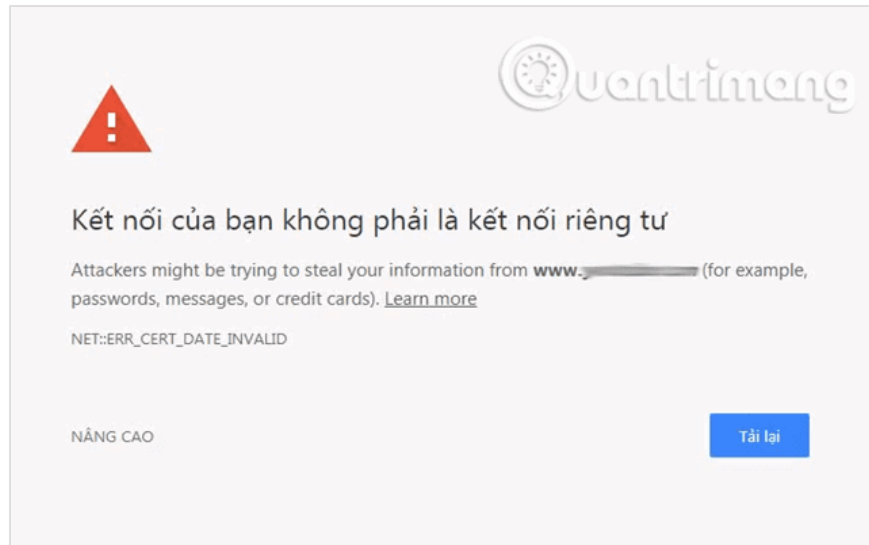
So how do you fix it? TipsMake.com will guide you now. Please read on.

What is the "Your connection is not private" error on the Chrome browser?

Essentially, the cause of the "**Your connection is not private**" or '`Net::ERR_CERT_DATE_INVALID`' error on the Chrome browser is an SSL error, as we mentioned above.

SSL (Secure Sockets Layer) is used by websites to store all the information you enter on their Privacy and Security pages. SSL, or Secure Sockets Layer, is an encryption-based Internet security protocol. It was first developed by Netscape in 1995 to ensure the privacy, authentication, and integrity of data in Internet communication. SSL is the predecessor of the modern TLS encryption used today. Websites implementing SSL/TLS have "HTTPS" in their URLs instead of "HTTP".

If you encounter the SSL error "`Net::ERR_CERT_DATE_INVALID`" in your Chrome browser, it means your internet connection or computer is blocking Chrome from loading secure and private pages.



The 'Your connection is not private' error only applies to websites running over HTTPS (or that should be running over HTTPS). When you access a website, your browser sends a request to the server hosting that website. The browser then has to validate the certificate installed on the website to ensure it complies with current privacy standards. Other things that happen include a TLS handshake, the certificate being checked against the certificate authority, and certificate decryption.

If the browser detects that the certificate is invalid, it will automatically attempt to prevent you from accessing the website. This feature is built into web browsers to protect users. If the certificate is not set up correctly, this means that data cannot be properly encrypted and therefore, the website is not secure to access (especially those containing login information or processing payment information). Instead of loading the website, it will display an error message, such as 'Your connection is not private'.

Variations of the error "Your connection is not private"

There are quite a few different variations of this error. While some of these errors sometimes mean slightly different things, many of the troubleshooting steps are the same.

In Google Chrome, if there's a problem with certificate authentication, the error will display 'Your connection is not private' (as shown in the image above).

Attackers may be trying to steal your information from domain.com (for example, passwords, messages, or credit card information).

This also comes with an error code message to help you try and pinpoint the problem. Below are just some of the most common error codes you might see in Google Chrome:

1. ERR_CERT_SYMANTEC_LEGACY
2. NET::ERR_CERT_AUTHORITY_INVALID
3. NET::ERR_CERT_COMMON_NAME_INVALID (this happens when the certificate does not match the domain)
4. NET::ERR_CERT_WEAK_SIGNATURE_ALGORITHM
5. NET::ERR_CERTIFICATE_TRANSPARENCY_REQUIRED

6. NET::ERR_CERT_DATE_INVALID
7. ERR_SSL_PROTOCOL_ERROR
8. ERR_SSL_VERSION_OR_CIPHER_MISMATCH

Why do SSL errors occur?

There are many reasons why SSL errors can occur, including:

1. *Certificates not issued by a recognized third party:* Anyone can create a certificate, so Google Chrome will check to see if the website's certificate is issued by a trusted organization. If the certificate is not from a trusted organization, Google Chrome will not grant you access.
2. *Website certificate is not updated:* If a website's certificate is provided by a trusted organization but has not been updated for a long time, Google Chrome will be unable to verify whether the website is still secure and private.
3. *The connection between the browser and the website may be insecure:* Sometimes errors occur because the connection between the browser and the websites is not secure.

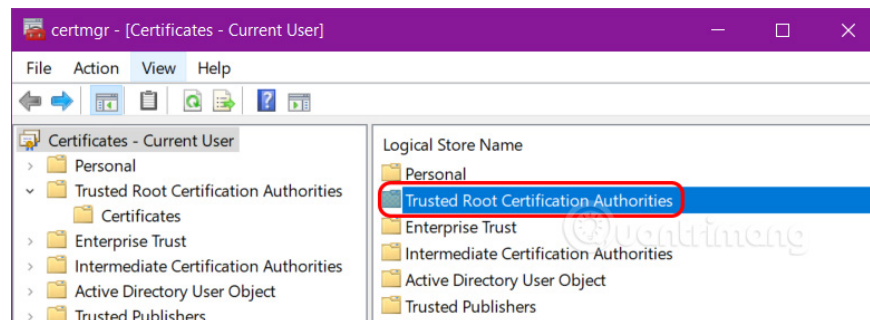
Fixes the "Your connection is not private" error caused by the expiration of the Let's Encrypt root certificate.

On September 30, 2021, the root certificate of Let's Encrypt expired. The website administrator had to replace the SSL certificate; otherwise, the website would become inaccessible on older devices. To temporarily resolve this issue, follow these steps:

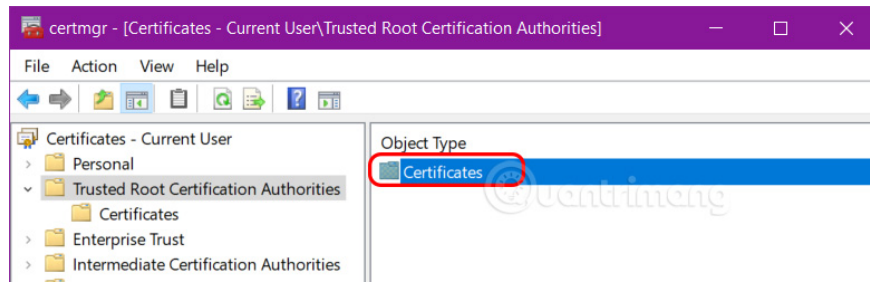
Step 1: Download the file `isrgrootx1.pem.txt` and press `Ctrl+S` to save it to your computer.

Step 2: Press **Windows + R** , type `certmgr.msc => Enter` .

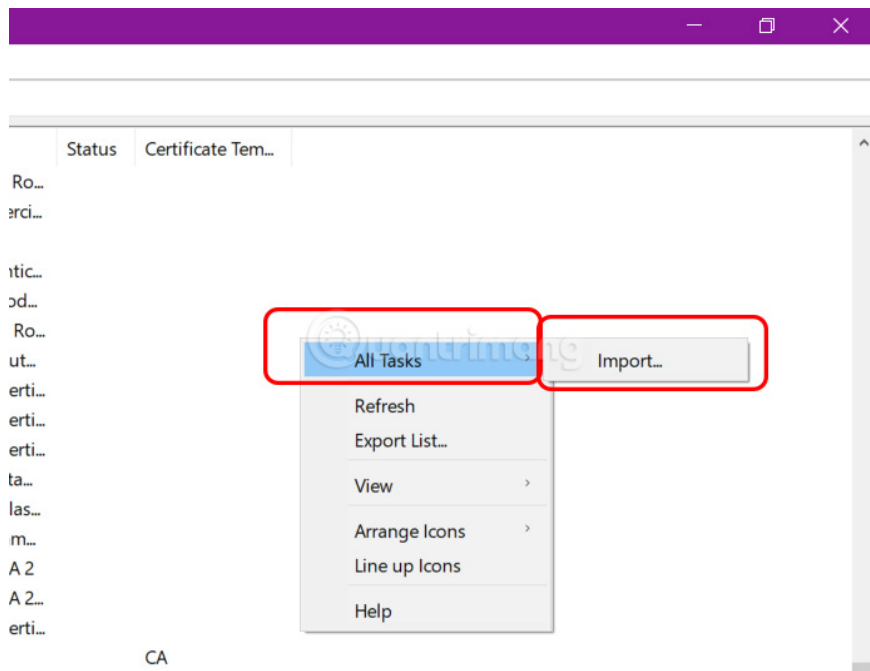
Step 3: Find **Trusted Root Certification Authorities** on the right and double-click on it.



Step 4: Double-click on **Certificates** again.



Step 5: Open the current window, right-click on an empty space => **All tasks** => **Import**



Step 6: Click **Next** on the new window that appears, click **Browse** to find the file you saved in Step 1, then complete the on-screen instructions to add the file.

Step 7: Restart your computer and try accessing it again to see if it works.

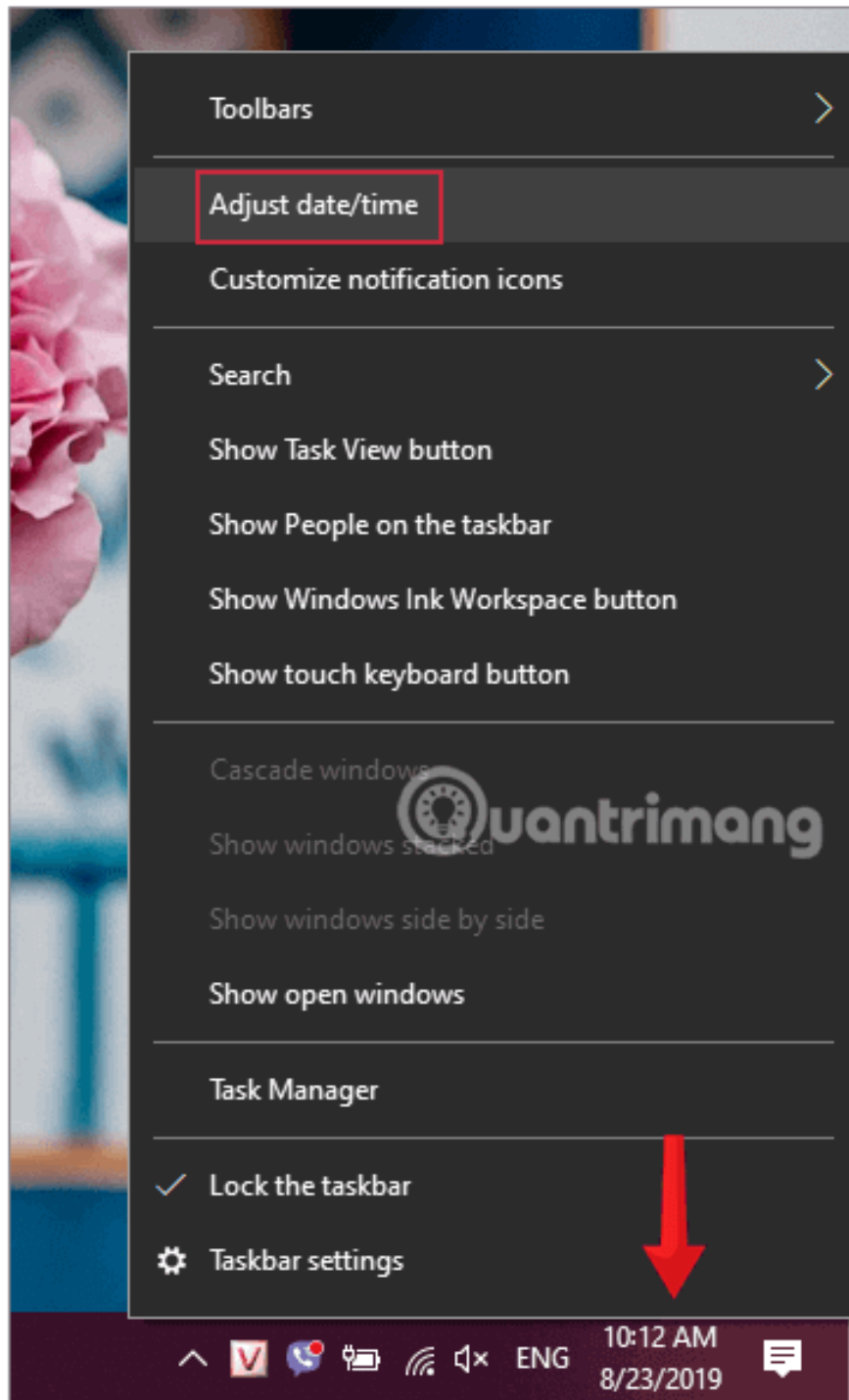
How to fix the "Your connection is not private" error in Chrome on your computer.

To fix the "Your connection is not private" error on Chrome, you can try some of the solutions below:

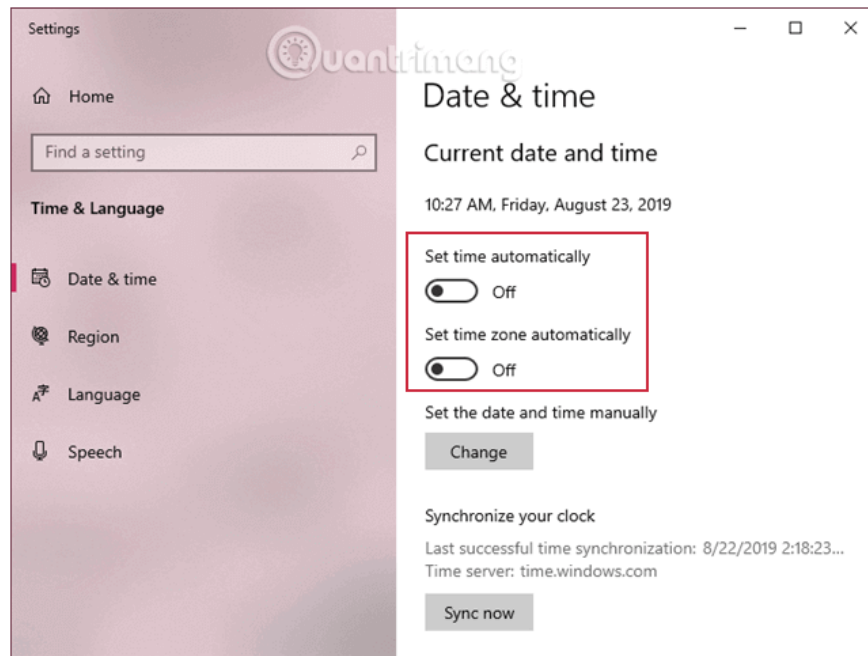
1. Check the date and time on your computer.

In most cases, incorrect date and time settings will cause SSL errors or "**Your connection is not private**" errors. To fix this, reset the date and time to the correct settings, then check if the error persists.

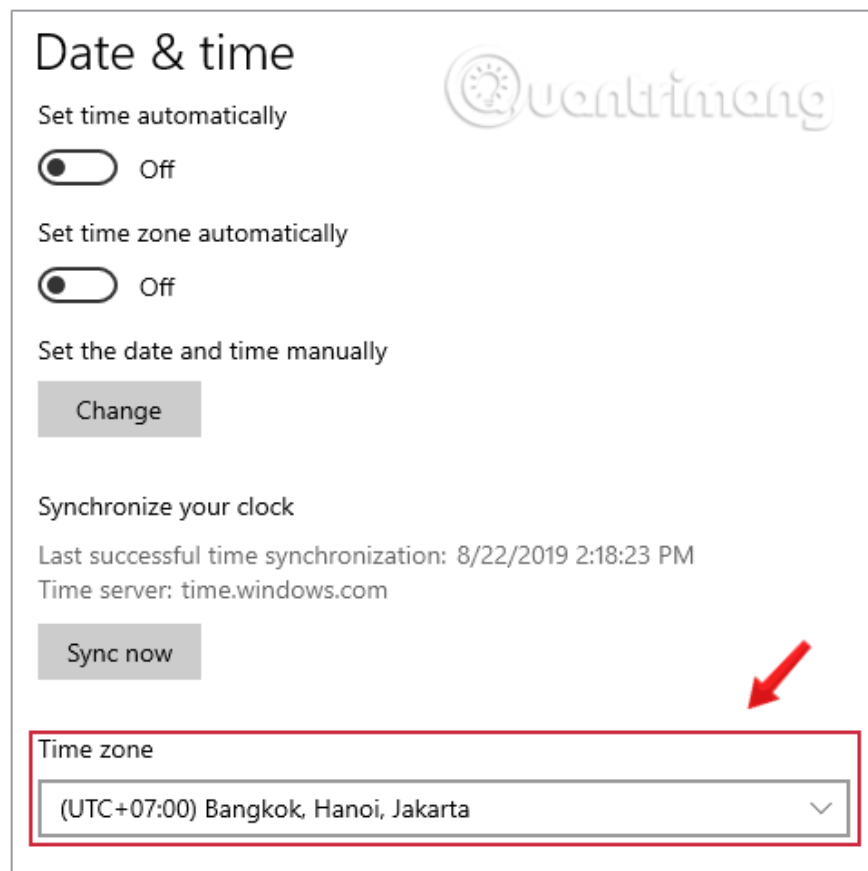
Step 1: Right-click on the date and time in the Taskbar and then select **Adjust date/time**.



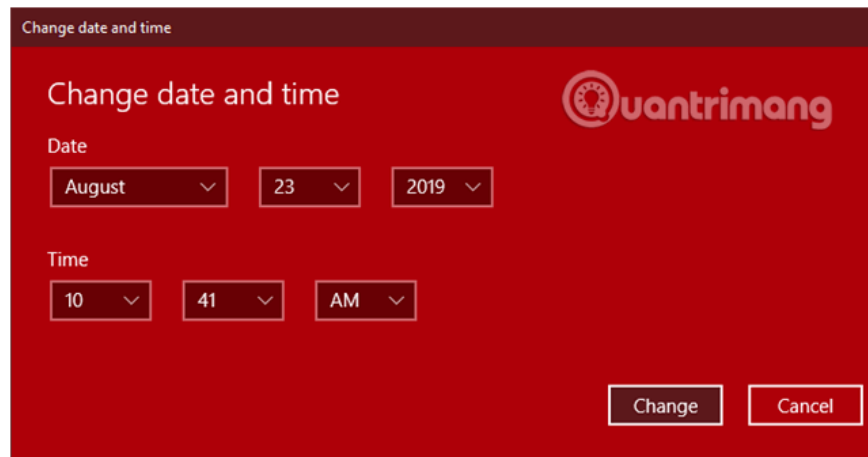
Step 2: In the Date/Time Settings window that appears, turn off the " Set time automatically" and "Set time zone automatically" features so you can change the time manually.



Step 3: Check the Time zone below to see if it's the correct time zone for Vietnam (**UTC +07:00**) **Bangkok, Hanoi, Jakarta**. If not, select again.



Step 5: Adjust the date and time to the current time by clicking **Change in the Set the date and time manually** section .



After adjusting the time, try accessing the website again to see if the error persists.

2. Check your antivirus software.

If you've set the correct date and time but the error persists, the next solution you might consider is checking the antivirus software installed on your computer. Some antivirus programs block website security credentials, resulting in the " **Your connection is not private** " error on Chrome.

1. If you have Avast Free Antivirus installed to protect your computer, you will need to disable HTTPS scanning in Avast. To do this, go to **Settings ? Active Protection ? Web Shield ? Customize** and uncheck the " **Enable HTTPS scanning** " option .
2. If you're using Bitdefender antivirus software to protect your computer, you'll need to disable SSL. To do this, first open the Bitdefender main interface, then access Settings (located in the upper right corner). Here, click Privacy **Control ? Antiphishing tab** and finally turn off **Scan SSL** .

3. Clean up your Chrome browser.

Clearing your browser's cache and cookies is a crucial first step in most internet browsing troubleshooting. The cache is a tool your internet browser uses to speed up page loading. However, it can sometimes cause problems as websites are updated and developed, as cached files can conflict with what's actually coded on the webpage. Therefore, cleaning your browser is a surefire way to resolve any issues you're actually experiencing with the website, not just conflicts caused by using different browsers.

If the above solutions don't fix the problem, you can also try "cleaning up junk files" in your Chrome browser. To clear the cache, history, and other data in Chrome, follow these steps:

Step 1: Go to the "Clear browsing data" section using one of the following methods:

1. **Method 1:** Open settings in the upper right corner of the browser, click on **More tools ? Clear browsing data**.
2. **Method 2:** Press the shortcut key combination **Ctrl+ Shift+ Del**.
3. **Method 3:** Enter the following into the address bar and press Enter:

```
chrome://settings/clearBrowserData
```


Step 2: The "Clear browsing data" interface will now appear on the screen . Here, select the content you want to clean up and then click the "Clear data" button .

Xóa dữ liệu duyệt web

Cơ bản Nâng cao

Phạm vi thời gian Từ trước đến nay ▼

- Lịch sử duyệt web**
Xóa lịch sử khỏi tất cả các thiết bị đã đăng nhập. Tài khoản Google của bạn có thể có các dạng lịch sử duyệt web khác tại myactivity.google.com.
- Cookie và các dữ liệu trang web khác**
Đăng xuất bạn khỏi hầu hết các trang web. Bạn sẽ vẫn được duy trì trạng thái đăng nhập vào Tài khoản Google để có thể xóa dữ liệu đã đồng bộ hóa.
- Tệp và hình ảnh được lưu trong bộ nhớ đệm**
Giải phóng 40,5 MB. Một số trang web có thể tải chậm hơn trong lần tiếp theo bạn truy cập.



Hủy Xóa dữ liệu

After clearing cookies, cache, and browsing data, close Chrome and restart it. Now, visit the website again to see if the error has been resolved.

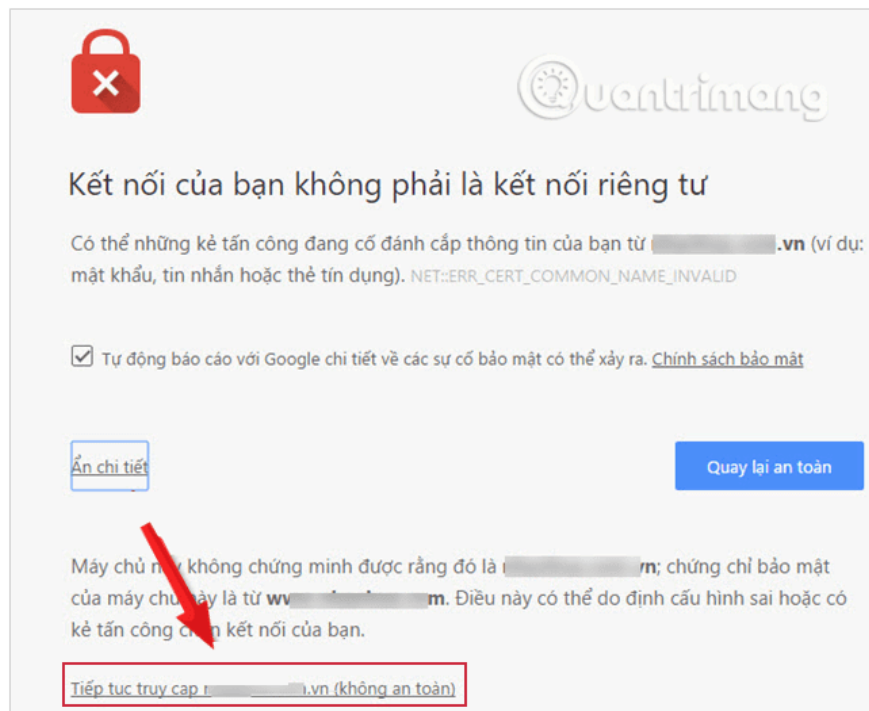
4. Continue accessing the page

If you are sure that the website you want to visit is safe, then feel free to proceed.

Step 1: Click the **Advanced** link below the notification.



Step 2: The option "Continue accessing (Not secure)" will now appear . Click on this option to access the website.



Please note that this method may not be applicable in some cases.

5. Reset Chrome browser

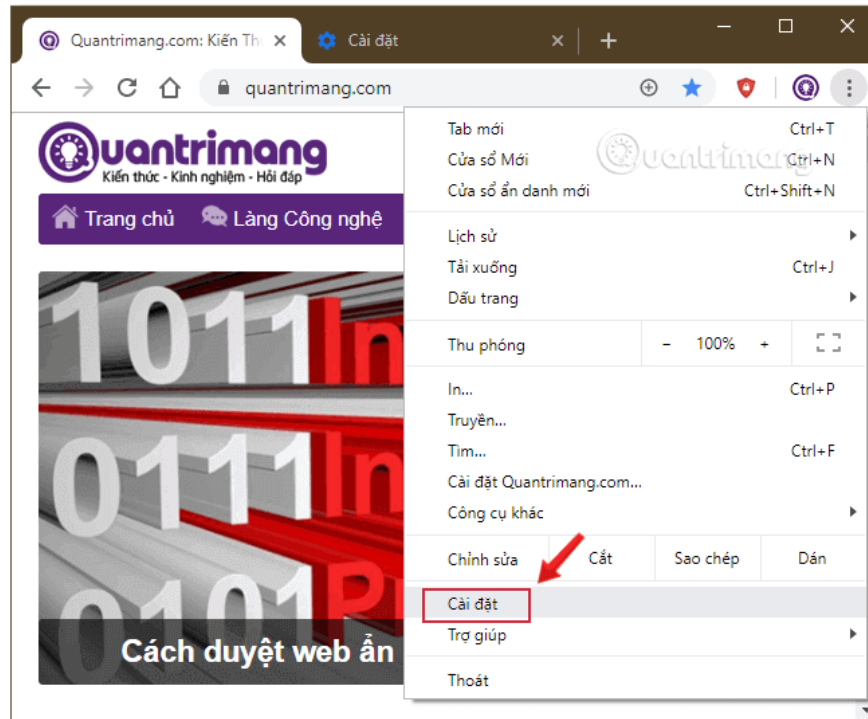
If you've tried all the above solutions and still can't speed up your browser, then your only option is to **reset Chrome**.

If you're worried about the passwords for your saved accounts and bookmarks in your browser, don't worry too much. If your Google account is synced with Chrome, you can easily import all this data by simply logging into

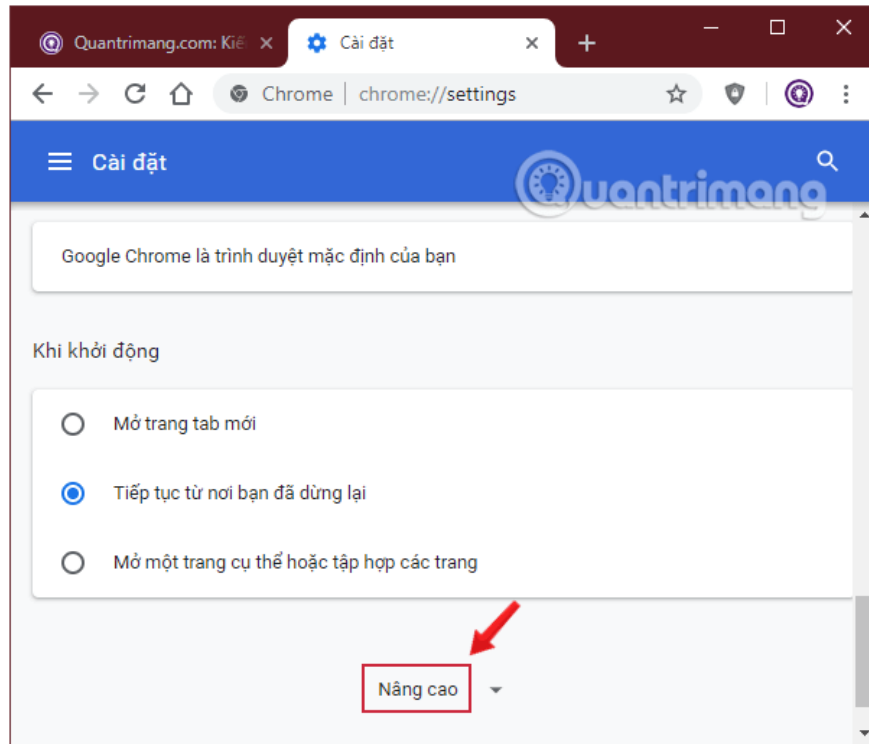
the browser.

Here are the steps to reset the Chrome browser:

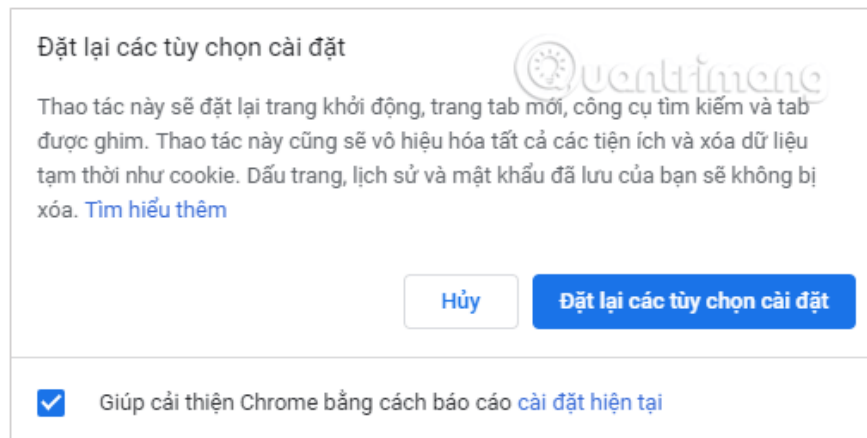
Step 1: Open your Chrome browser, click **the three vertical dots icon** in the upper right corner of the screen, and access **Settings**.



Step 2: Scroll down and click on **Advanced** to display the Advanced Settings.



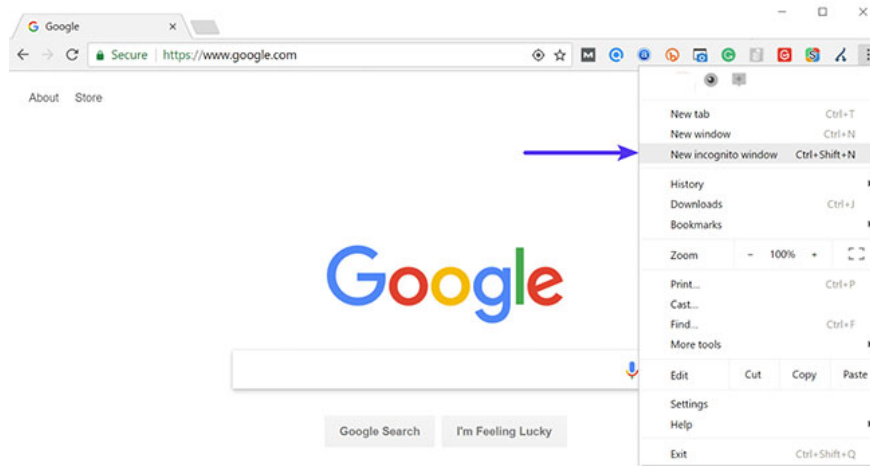
Step 3: Next, scroll down the screen, find and select the **Reset and cleanup** option ? **Restore to factory defaults** to return Chrome to its original state.



Step 4: Finally, log in to Google Chrome using your Google account and check if you can access the website.

6. Try Incognito mode.

The next suggestion is usually to clear your browser's cache. However, that's often easier said than done for many of us. If you want to check if the cause is the browser cache, without clearing it, you can always open the browser in Incognito mode. Or try a different browser and see if you still see the 'Your connection is not private' error.



To open Chrome in Incognito mode, refer to the article: [How to open incognito tabs on Chrome, C?c C?c, Firefox, etc.](#)

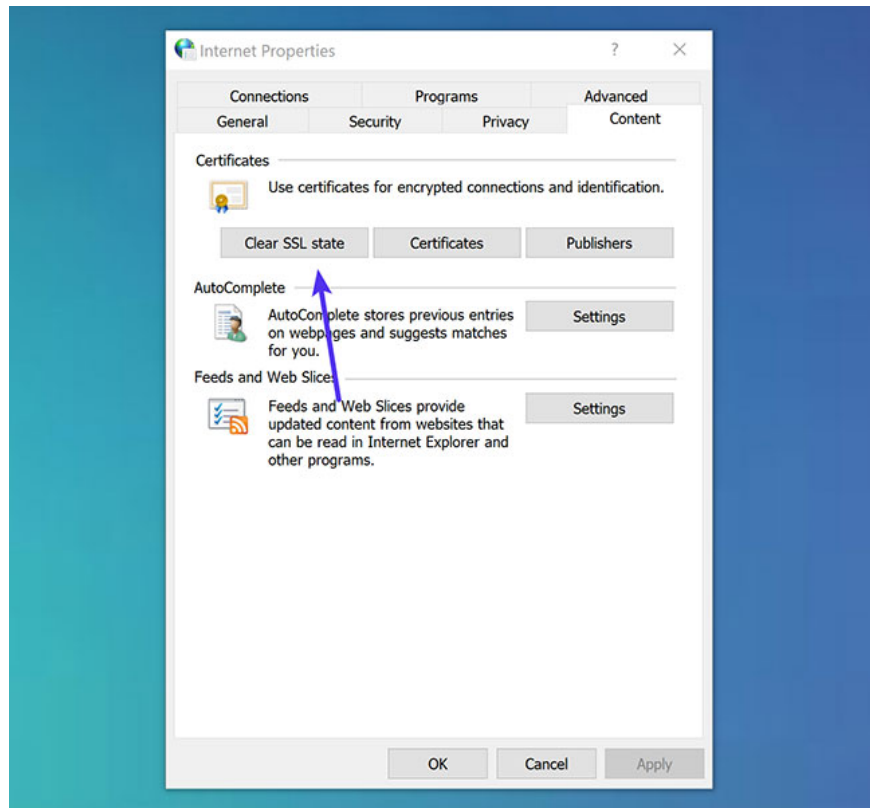
7. Clear your browser's cookies and cache.

If you think the problem might be with your browser, clearing your browser's cache is always an effective troubleshooting step before delving into more complex solutions. Refer to the article: [How to clear cache and cookies on Chrome, Firefox, and C?c C?c](#) for more details.

8. Try clearing the SSL status on your computer.

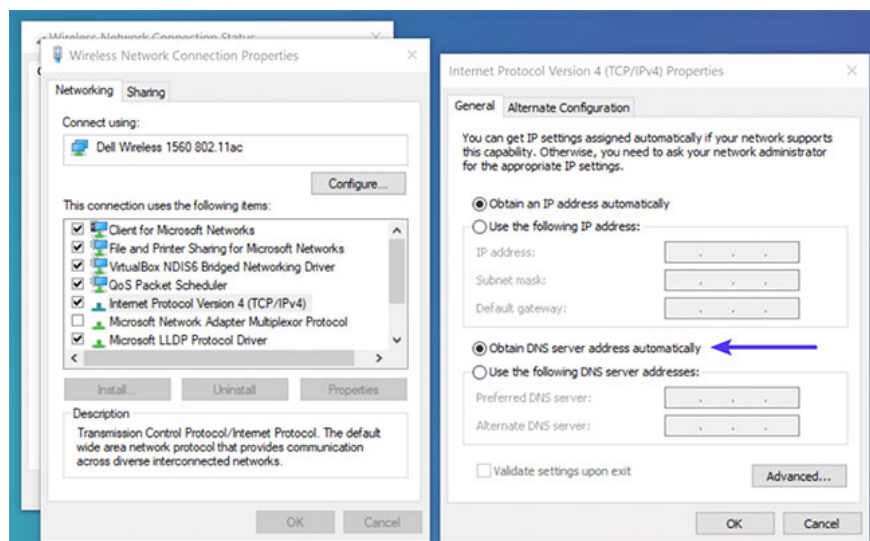
Clearing the SSL state in Chrome is often overlooked, but it can be very handy and easy to try. Like clearing your browser cache, this can help if things aren't syncing. To clear the SSL state in Chrome on Windows, follow these steps:

1. Click on the Google Chrome icon, then click on **Settings**.
2. Click on **Show advanced settings**.
3. In **Network**, click **Change proxy settings**. The **Internet Properties** dialog box will appear.
4. Click on the **Content** tab.
5. Click on **Clear SSL state**, then click **OK**.
6. Restart Chrome.



9. Change DNS server

The next thing you can try is changing your DNS server. The '*Your connection is not private*' error has previously appeared when using Google's public DNS (8.8.8.8 and 8.8.4.4) or Cloudflare's DNS (1.1.1.1 and 1.0.0.1). Deleting these DNS servers and reverting to your ISP's default DNS can sometimes resolve the issue.



To do this on Windows, go to the network connection properties and make sure that "**Obtain DNS server address automatically**" is selected. If you have added Google's Public DNS or Cloudflare's DNS to your router, you may also need to remove it from there.

10. Temporarily disable your VPN and antivirus software.

Sometimes VPNs and antivirus software can conflict with or override your network settings, including blocking certain certificates or SSL connections. If you have any VPNs or antivirus programs running, try temporarily disabling them (closing them) or turning off the **SSL Scan** feature to see if that resolves the issue.

11. Update the operating system.

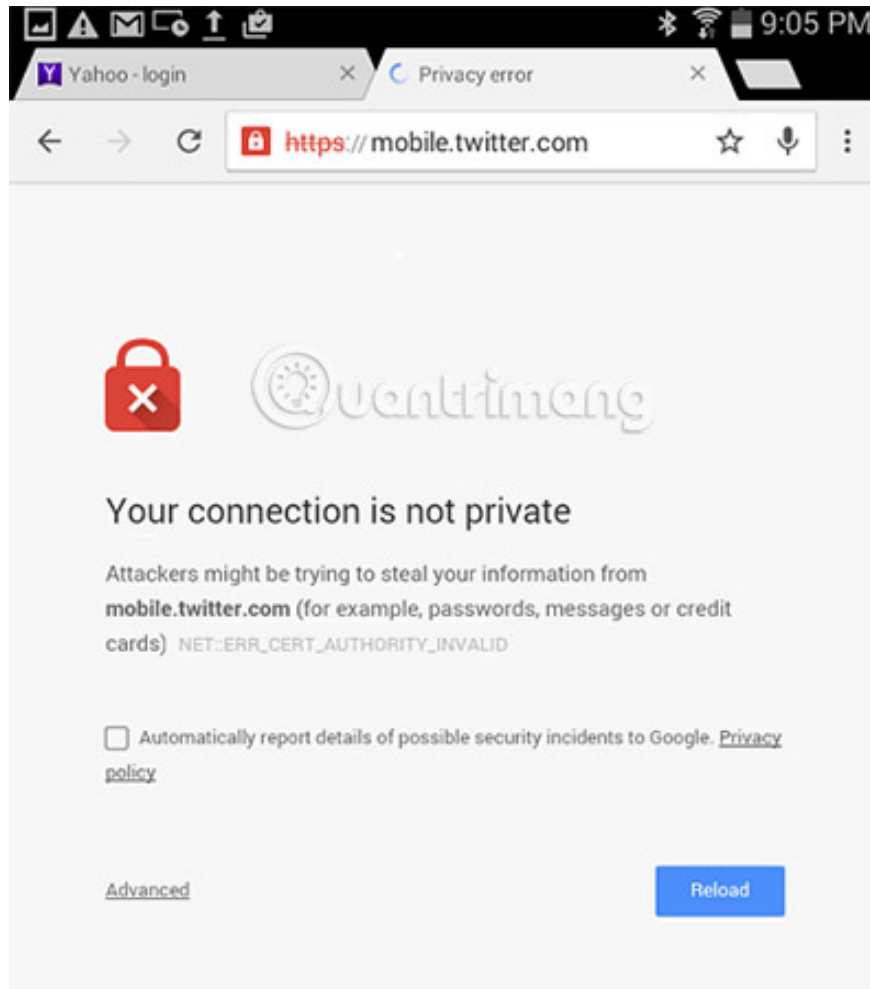
Older operating systems will become obsolete with newer technologies like TLS 1.3 and the latest encryption keys, as browsers stop supporting them. Specific components in the latest SSL certificates will cease to function. In fact, Google Chrome stopped supporting Windows XP in 2015. You should upgrade to newer operating systems if possible, such as Windows 10 or the latest version of Mac OS X.

Ensure your device is updated on Windows, Mac, or another operating system.

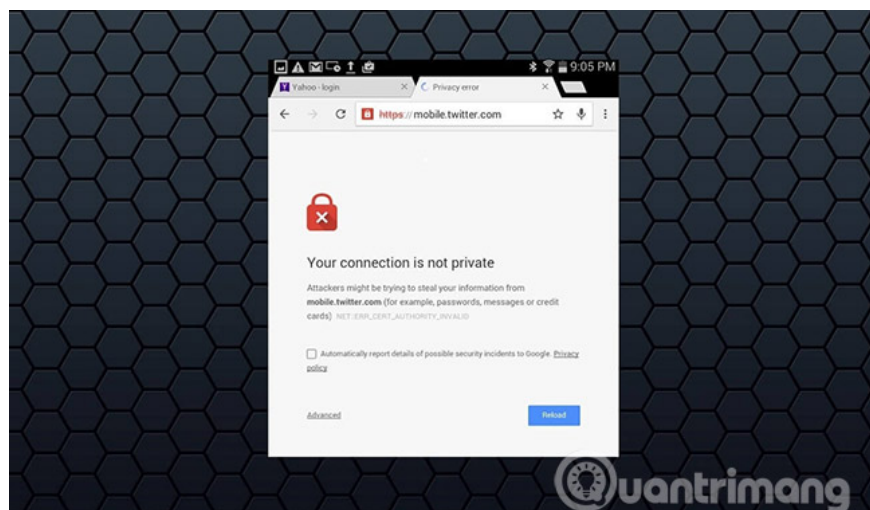
If none of the above methods work, try reinstalling Windows .

How to fix the "Your connection is not private" error in Chrome on Android devices.

If you've successfully resolved the **"Your connection is not private" error** in Chrome on your desktop or laptop, but are unsure how to fix this error in Google Chrome on your Android device .



Don't worry, the methods for resolving the **"Your connection is not private" net::err_cert_authority_invalid** error on Android devices aren't much different from those for computers. Set your connection to private on Google Chrome, then read the troubleshooting methods in the following section!



1. Run Chrome in an incognito tab.

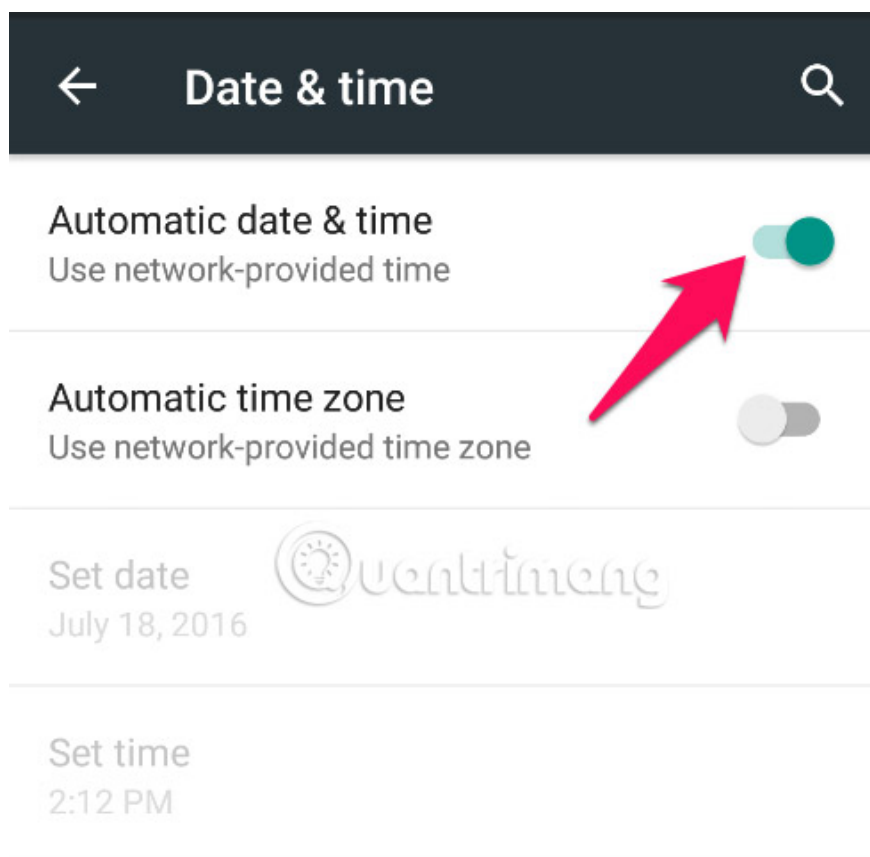
Try opening the page in Incognito mode. If the page works in Incognito mode, it means one of your extensions is causing a security issue and you should remove it.

2. Change date and time settings on Android

If the date and time are incorrectly set on your Android device, you may encounter the error "**Your connection is not a private connection net::err_cert_authority_invalid**". Therefore, making changes in the **Date and Time Settings** on your Android device may resolve this issue. To change the date and time on your Android clock:

Step 1 : First, open Settings **on** your Android device, then **open Date and Time** .

Step 2: **In this section, enable the Automatic date and time** option in the displayed menu.



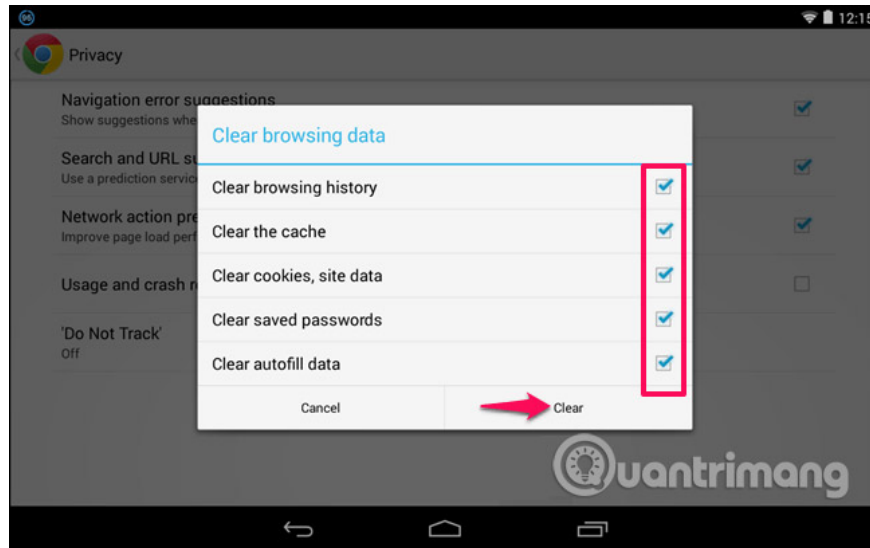
Alternatively, you can also manually set the date and time.

Once you have entered the correct date and time on your Android mobile phone, the "**Your connection is not private**" error on your Android device will be eliminated.

3. Clear your browsing data in Chrome to fix the "Your connection is not private" error.

As we know, clearing browsing data can resolve many issues on Android devices. Therefore, if you receive this security error on your Android phone or tablet, simply clear your browsing data in Chrome. This is also one of the best solutions to fix the "**Your connection is not private**" error on Android. Here's how to do it:

1. First, open the Chrome app on your Android phone or tablet.
2. Next, tap the three - dot icon in the upper right corner and go to **Settings** .
3. In the **Advanced section** , **click on the Privacy option** and then select **Clear browsing data** .
4. Now you need to select all the boxes you see on the screen and then click the **Clear option** .



After successfully clearing your browsing data in Chrome, try reopening the website you previously visited. This time, you shouldn't receive any security error messages.

4. Change your WiFi connection from public to private.

To fix this SSL connection error, you should try changing the Wi-Fi connection you are using. If you are using a public Wi-Fi internet connection on your device, your device is very vulnerable to attacks. Try using a different Wi-Fi connection to fix the "**Your connection is not private**" error on your Android device. Changing your Wi-Fi connection from public to private has helped many Android users resolve this issue.

5. Turn off your Android antivirus app.

If you are using any security apps or antivirus programs on your Android device to scan and protect it from virus-infected files, malware, malicious software , spyware, etc., try disabling them on your device for a short time.

After disabling your Android antivirus app, check if you still encounter the "**Your connection is not private**" error on your device. If the error disappears after disabling the antivirus app, uninstalling the antivirus program you installed on your Android device may resolve the issue.

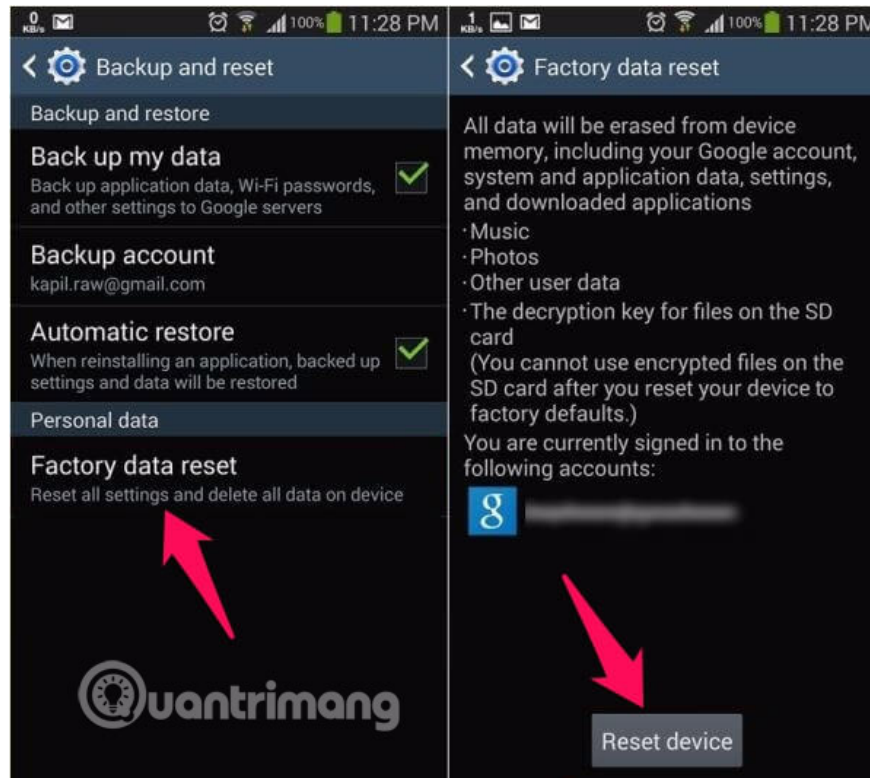
1. Top best antivirus apps for Android phones

6. Restore your Android phone to factory settings.

If you are unable to resolve the issue after following the methods mentioned above, then you can try this last troubleshooting method. Only try this last troubleshooting method if you have no other options, as factory resetting your Android phone will erase all existing data on your device.

Additionally, make sure you have a backup of all existing data on your Android device before performing a factory reset. Once you have successfully backed up all existing data on your Android device, you can follow the steps below:

1. First, open the **Settings** app on your Android phone or tablet.
2. **Scroll down and go to the Backup and Reset** option .
3. Here, you must select the **Factory Data Reset** option .



Finally, tap the **Reset Phone** or **Reset Device** option to confirm the restoration process.

Immediately after pressing the **Reset** button , the factory reset process will begin on your Android device. It will take some time to factory reset your device, as it depends on the amount of data currently on your Android device.

In summary, you can see that it's very simple to fix the " **Your connection is not private** " error in Google Chrome. Try these methods once on your computer and see which one works best!

Please let TipsMake.com know if you have another, more helpful troubleshooting method!

See more

1. How to remove Add-ons (Extensions) on Chrome, Firefox, and some other browsers.
2. Enable offline browsing mode on Chrome.
3. 6 useful Chrome browser features users should know.

Good luck!

You finished reading the article "**Quickly fix the 'Your connection is not private' error on Chrome browser.**" edited by the [TipsMake](#) team. We hope this article has provided you with many useful tech tips and tricks.

You can search for similar articles on tips and guides. Thank you for reading and for following us regularly.
