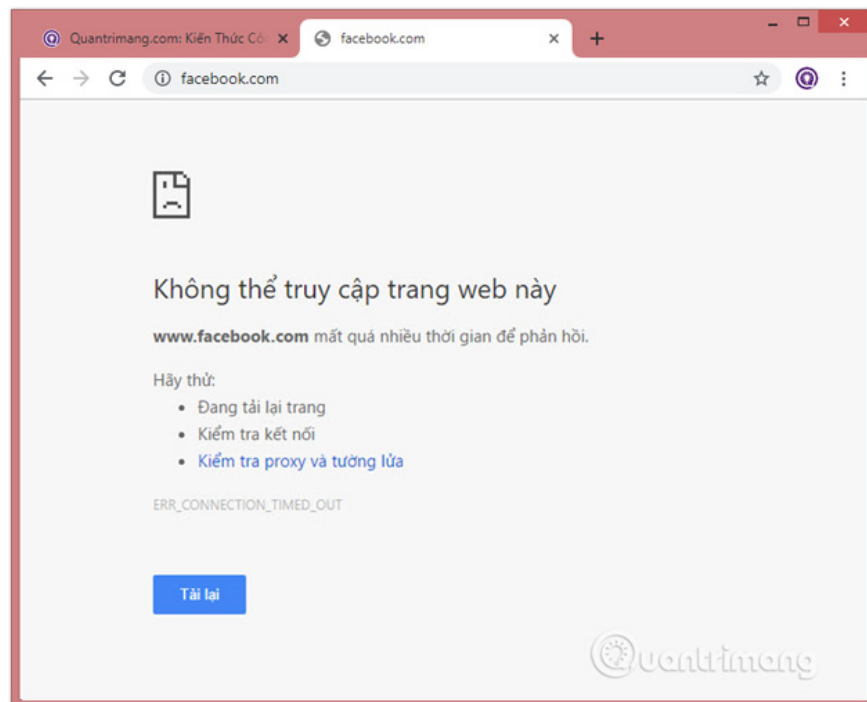


Quickly fix the error 'This site can't be reached' on Chrome

If you are a Windows user, when you encounter the error 'This site can't be reached' on your Chrome browser, you will probably immediately think about losing your network connection and will immediately apply the solution to fix the network outage error with troubleshooter. However, this troubleshooting process only focuses on scanning the basics like the connection between the server and your computer and cannot check DNS issues to actually resolve the problem. .

If you are a Windows user, when you encounter the error "**This site can't be reached**" on Chrome browser, you will probably immediately think about losing your network connection and immediately apply the solution. Fix network loss error with *troubleshooter*. However, troubleshooting with this solution only focuses on scanning basic problems such as the connection between the server and the computer, but does not check DNS issues to actually solve the problem.

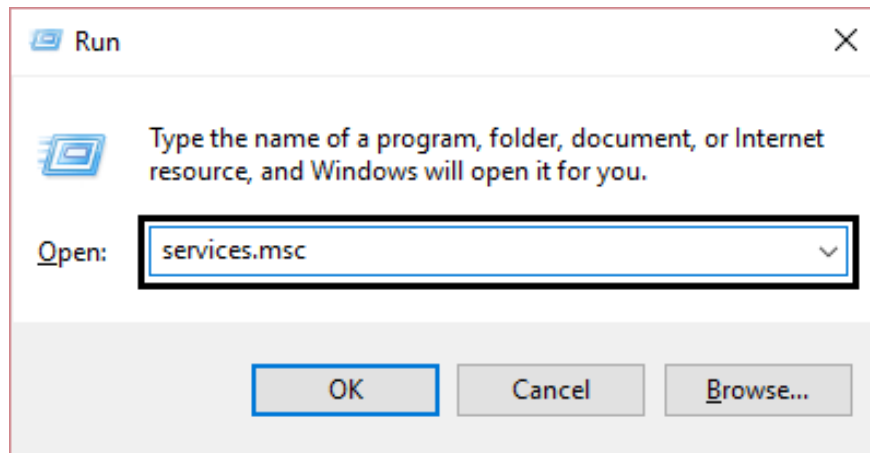
In the article below, Network Administrator will guide you through 4 ways to fix the error "**This site can't be reached**" on Chrome browser.



1. Restart DNS client

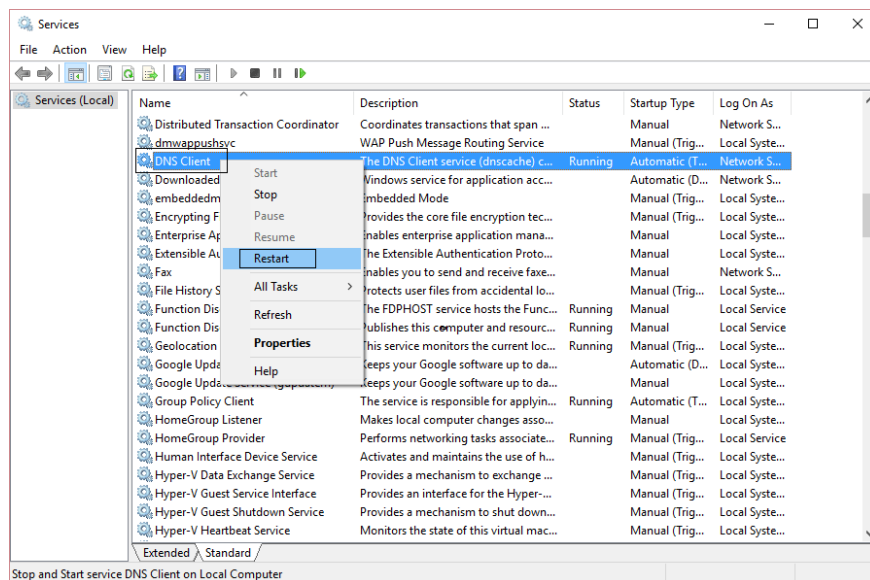
Follow the steps below to start **DNS Client** :

Step 1: Press the **Windows + R** key combination to open the Run command window, then enter **services.msc** there and press Enter to open the **Services window**.



Step 2 : On the Services window , scroll down to find the item named **DNS client**.

Step 3 : Right-click on **DNS client** and select **Restart**.

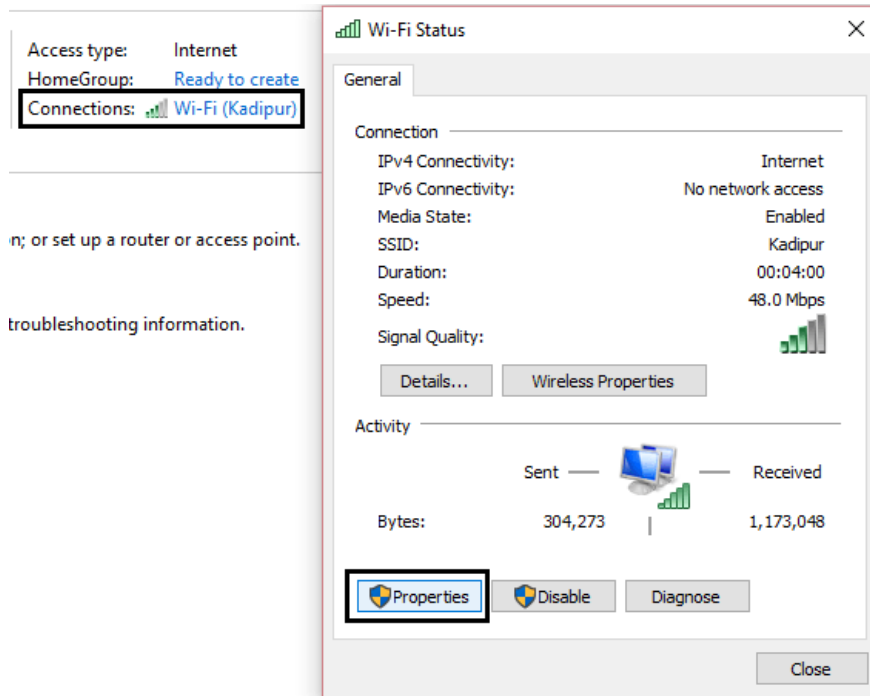


Step 4 : At this point, your **DNS client** will restart. After restarting, check to see if the error still exists.

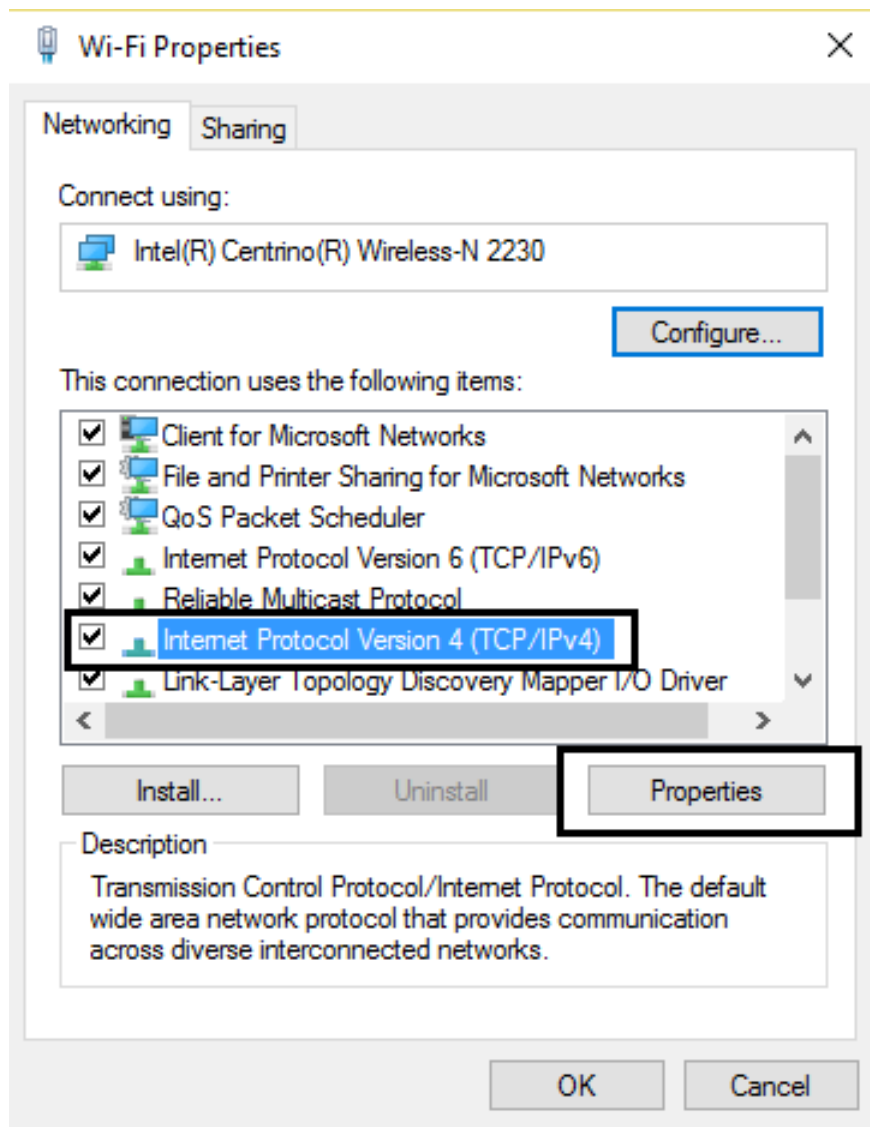
2. Change IPv4 DNS address

Step 1: Right-click the network icon in the system tray and then click **Open Network and Sharing Center** .

Step 2 : On the **Network and Sharing Center** window , click on the network you are connecting to, select **Properties**.



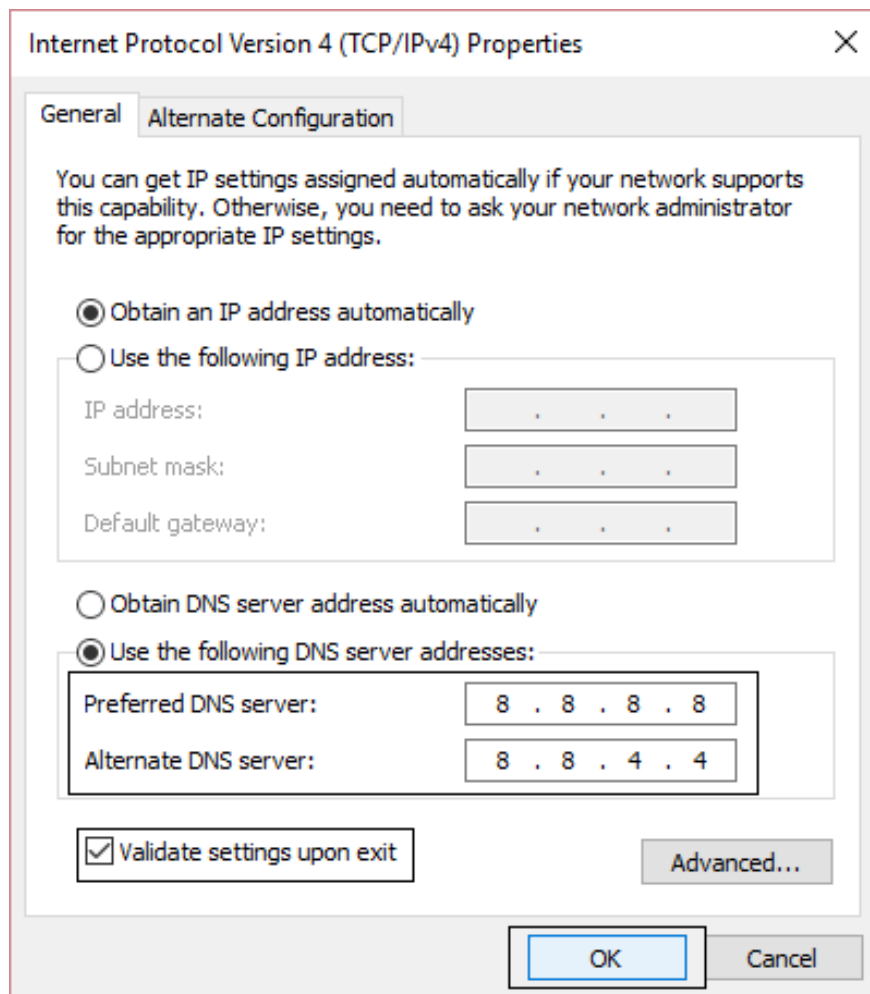
Step 3: On the Wifi Properties window , find and click Internet Protocol Version 4 (TCP/IP) , then click Properties.



Step 4 : Check **Use the following DNS server addresses.**

Step 5 : Enter the address below into the **Preferred DNS server** and **Alternate DNS** server boxes respectively:

Preferred DNS Server: 8.8.8.8 Alternate DNS Server: 8.8.4.4



Step 6 : Check **Validate settings upon exit** , then click **OK** and close the window.

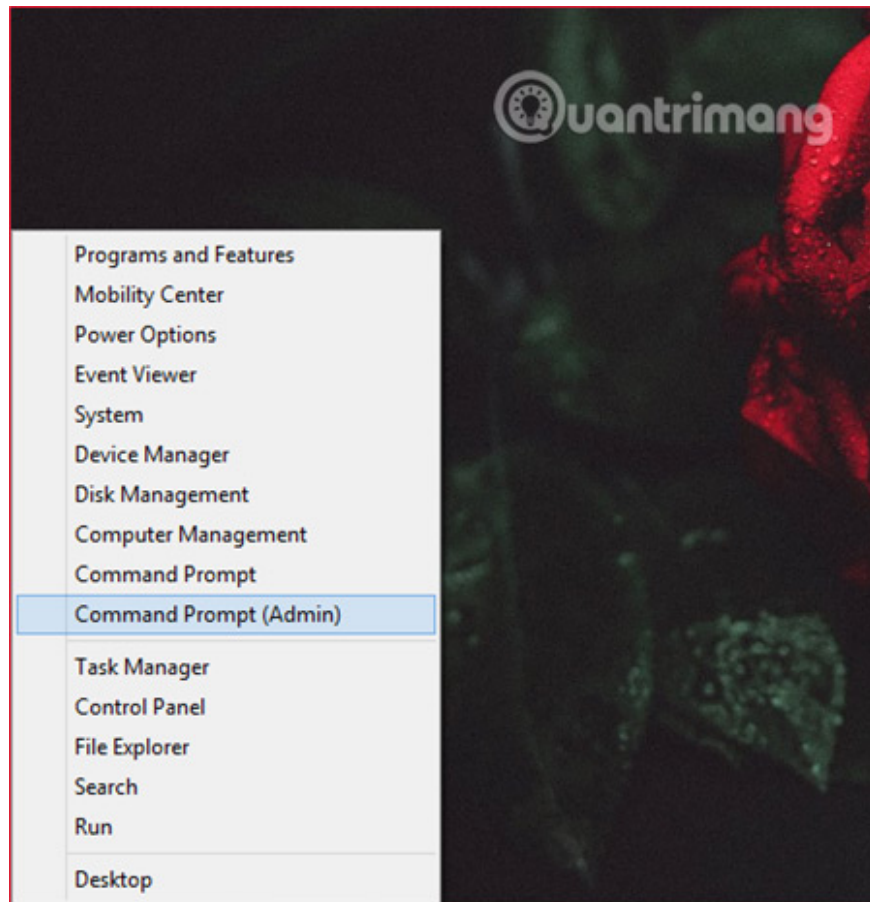
Step 7 : Finally check to see if the error still exists or not.

In addition, readers can learn more about how to change DNS usage to surf the web faster [here](#).

3. Reset TCP/IP

Step 1: Right-click the **Start** button in the bottom left corner of the screen, click **Command Prompt (Admin)**.

Or another way is to press the Windows + X key combination , then click **Command Prompt (Admin)**.



Step 2: On the Command Prompt window , enter each of the following commands one by one::

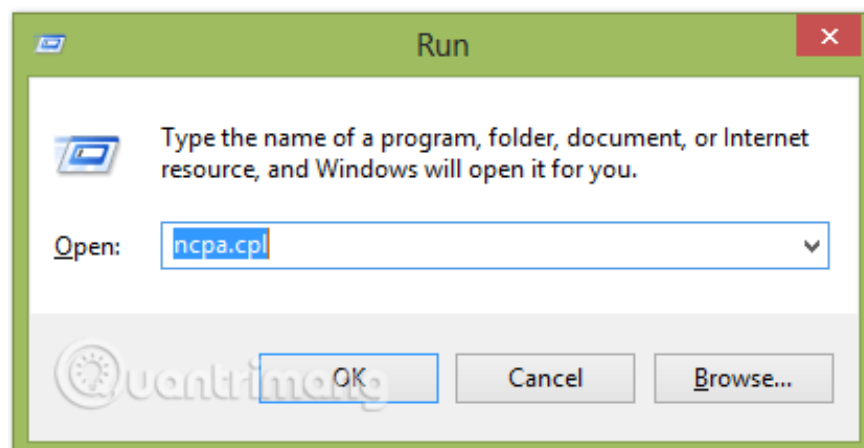
```
ipconfig /release ipconfig /all ipconfig /flushdns ipconfig /renew netsh int ip s
```

Step 3: After executing the commands, restart your computer and check to see if the error still appears.

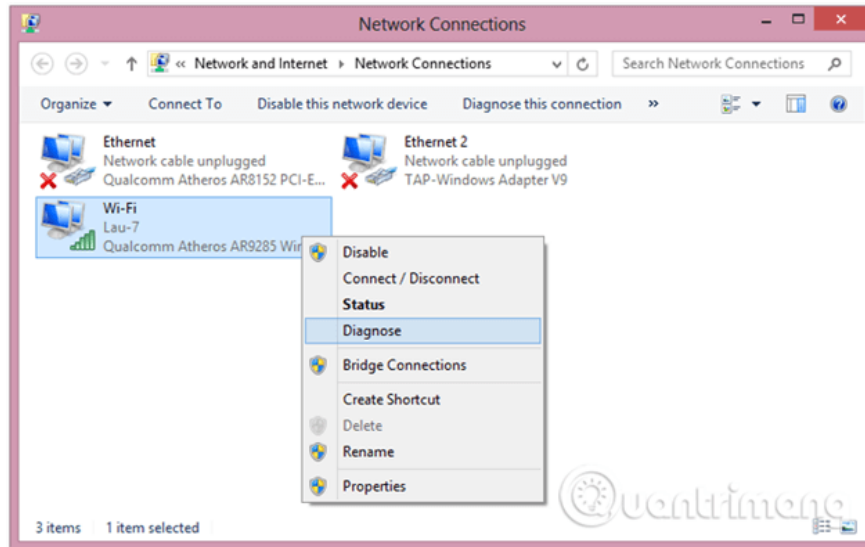
4. Run Network Troubleshooter to troubleshoot network problems

Step 1: Press the Windows + R key combination to open the Run dialog box .

Step 2: Enter **inetcpl.cpl** into the **Run** command window and press Enter.

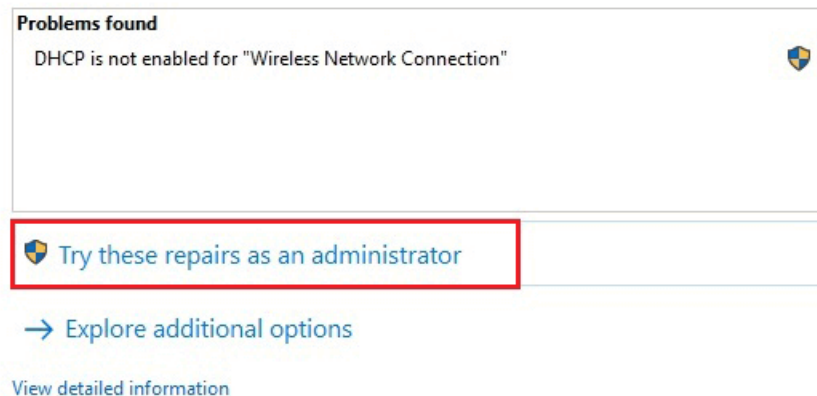


Step 3: Right click on the Wifi Connection you are using and select **Diagnose** .



Step 4: Let the Network Troubleshooter run and if it says **DHCP is not enabled for "Wireless Network Connection"** , perform the following steps to fix the error.

The remaining repairs require administrator permissions



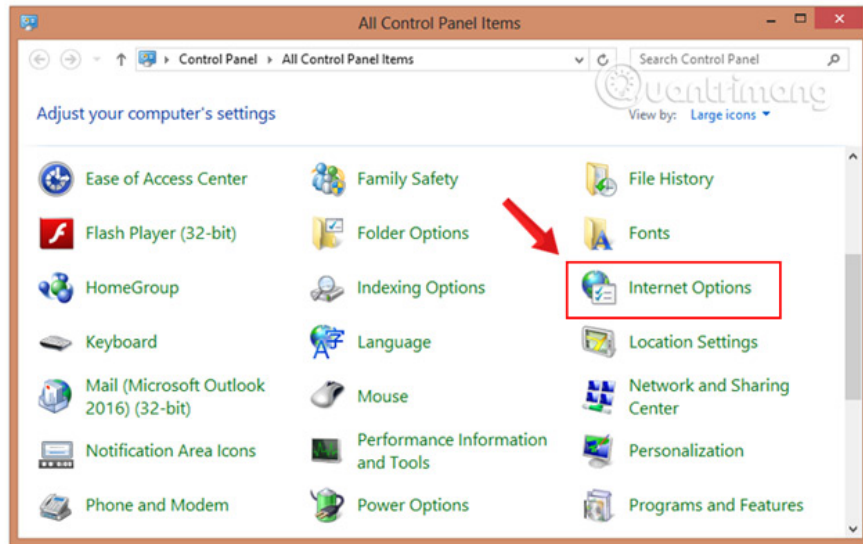
Step 5: Click Next to fix the error, then click **Try This Repairs as an Administrator**.

Step 6: On the next prompt window, click Apply this Fix.

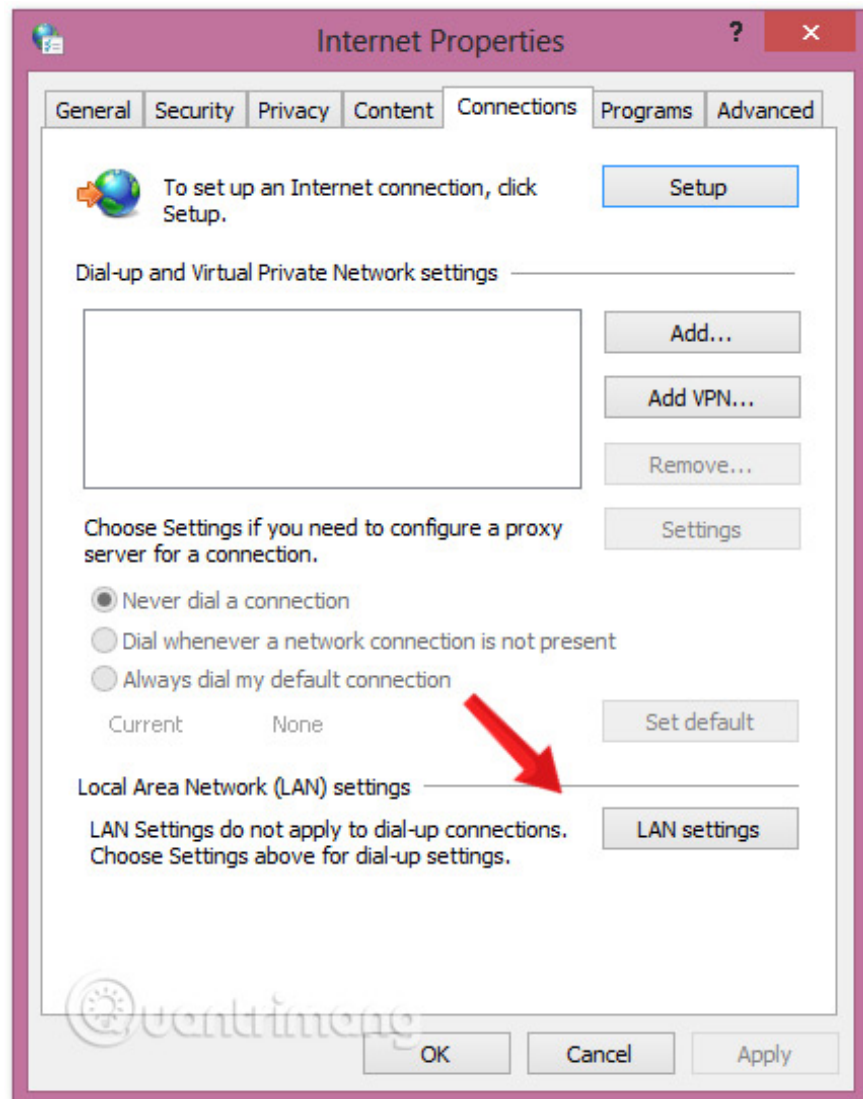
Step 7: Restart the computer to apply the changes and check if the "This site can't be reached" error still persists or not.

5. Check the Automatically detect settings option

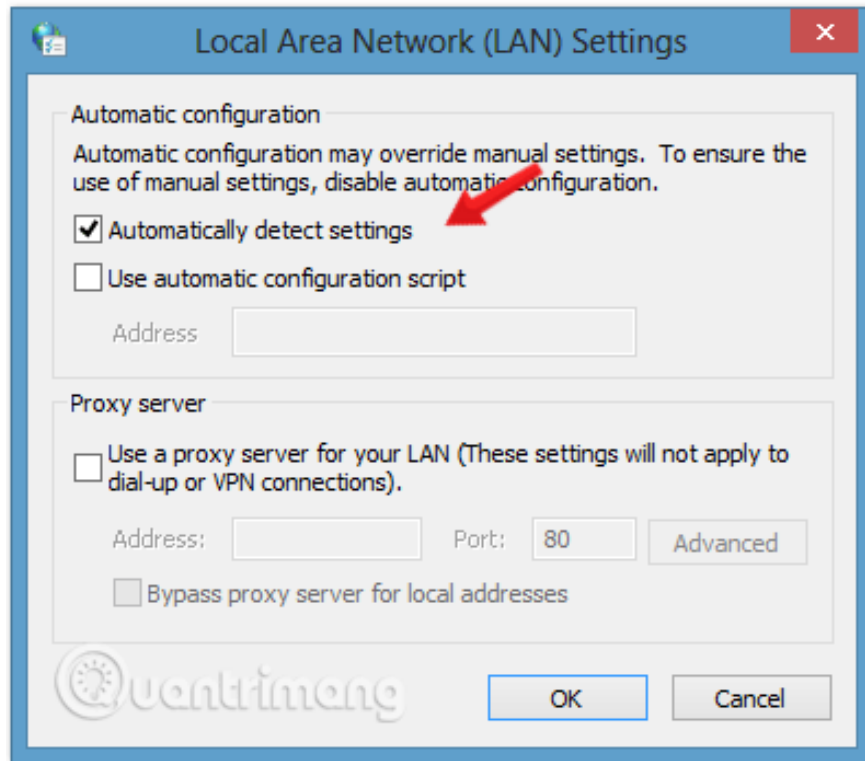
Step 1: Go to the **Internet Options** menu in **Control Panel**.



Step 2: On the next window, select **the Connections** tab and then click on **LAN Settings** .



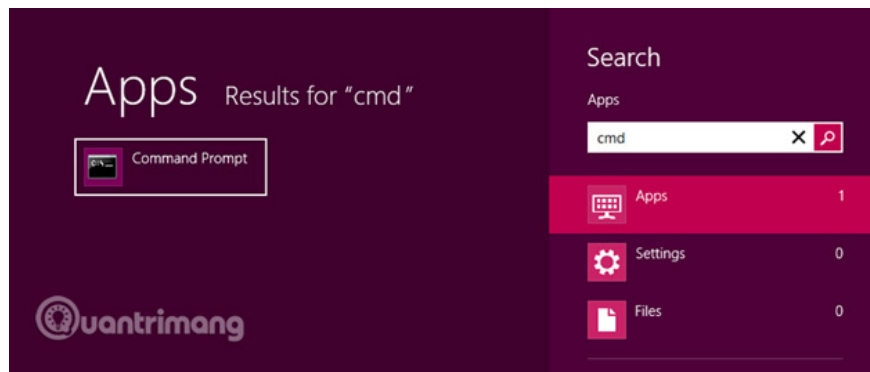
Step 3: Select **Automatically Detect Settings** then click **OK**.



Step 4: Make sure **Use a Proxy Server for your LAN** is not selected. If it is selected, uncheck it.

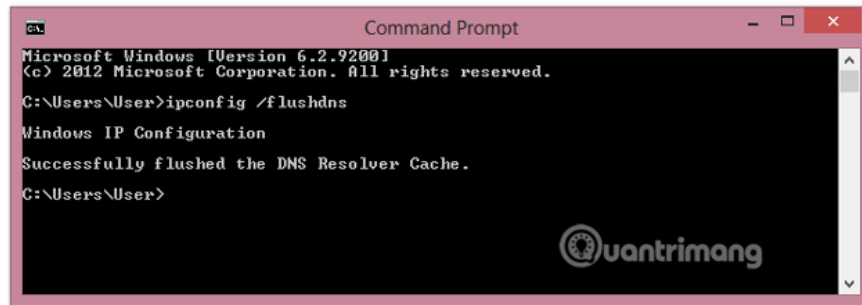
6. Clear DNS cache (flush DNS cache)

Step 1 : Go to **Start**, enter the phrase **cmd** in the search bar to find **Command Prompt**.



Step 2 : On the Command Prompt window , enter the command below and press Enter:

```
ipconfig /flushdns
```



```
Microsoft Windows [Version 6.2.9200]
(c) 2012 Microsoft Corporation. All rights reserved.

C:\Users\User>ipconfig /flushdns

Windows IP Configuration

Successfully flushed the DNS Resolver Cache.

C:\Users\User>
```

Step 3 : This command will clear the Windows DNS cache and fix DNS errors (if any).

Finally check to see if the error persists or not.

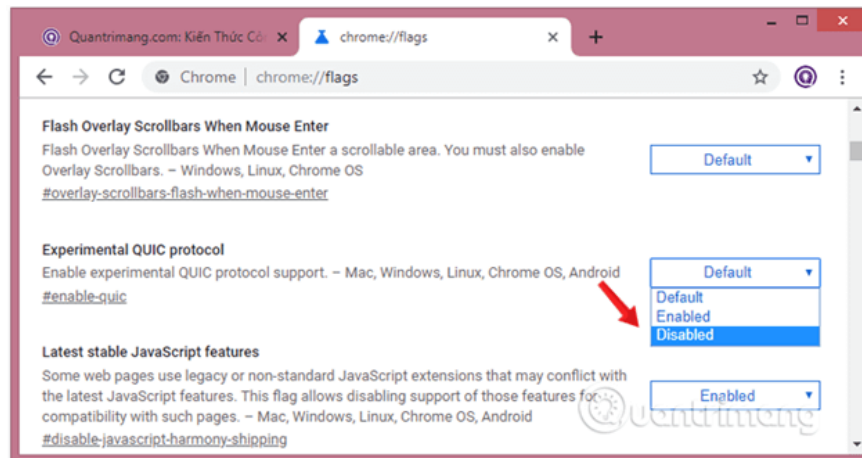
7. Disable Experimental Quic Protocol

Step 1 : Open Chrome browser on your computer.

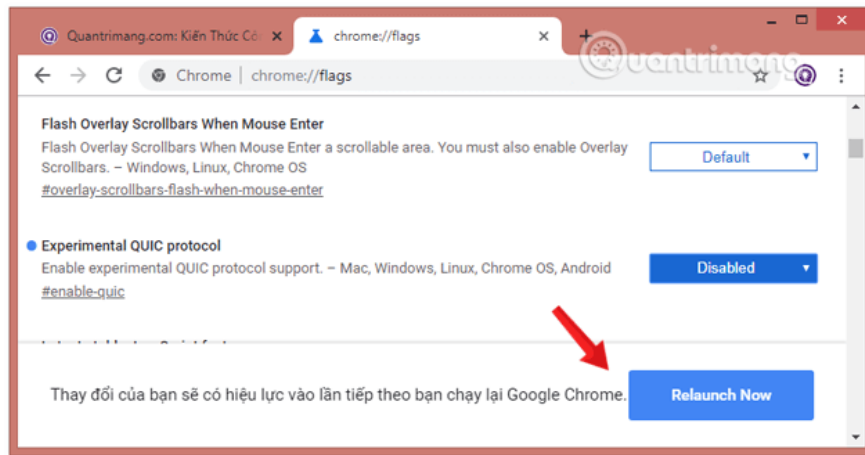
Step 2 : Next enter **chrome://flags** in the browser URL address bar and press **Enter** .

Now the screen displays the available **Experiments list window**.

Step 3 : Next find the **Experimental QUIC Protocol** section and click on the **Disabled** option from **the drop-down menu** .



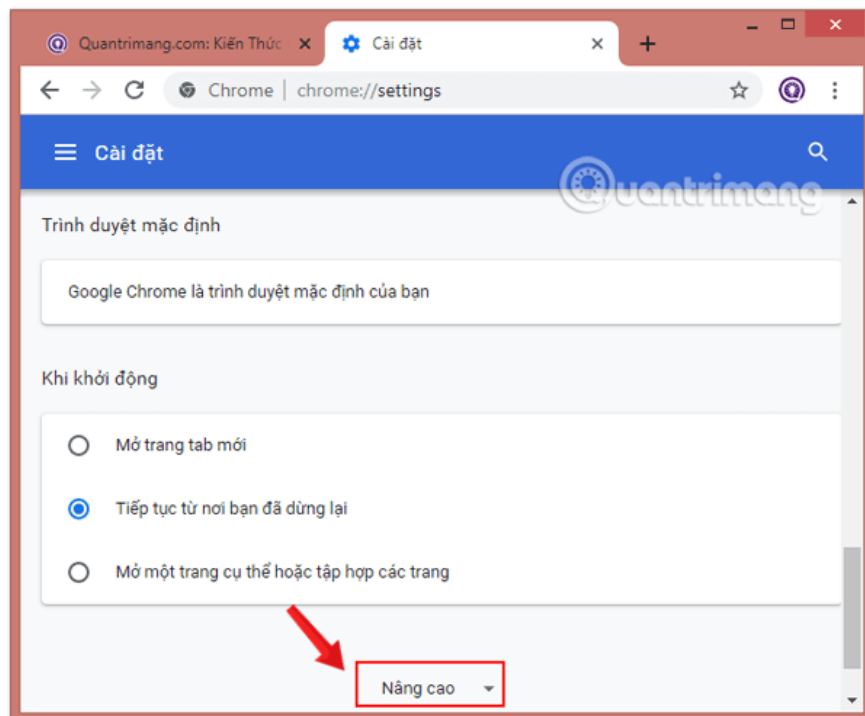
Step 4 : Finally click the **Relaunch Now** button to apply the changes.



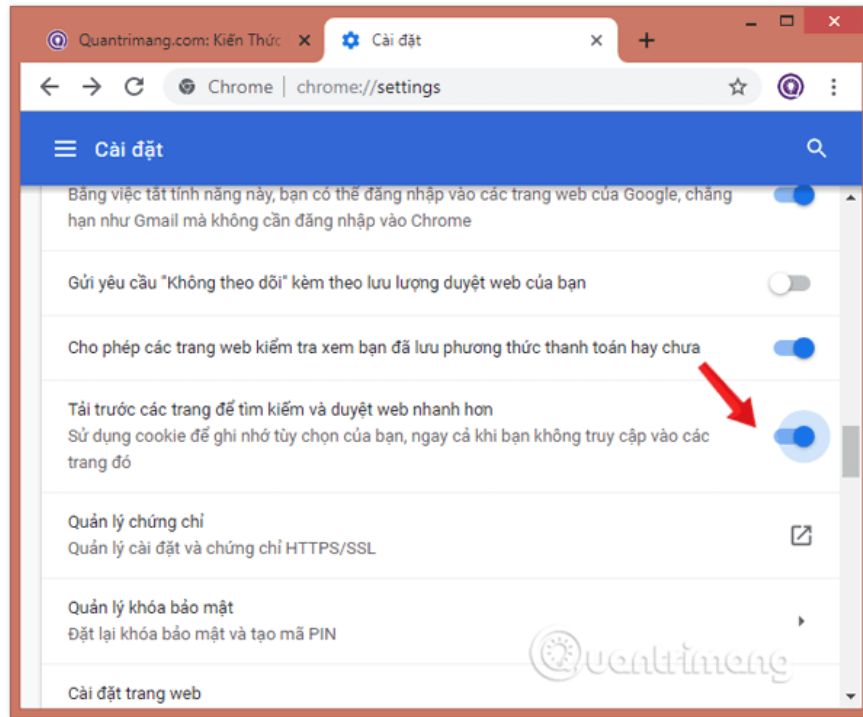
8. DNS Prefetching

Step 1 : Open the Chrome browser on your computer, then enter **chrome://settings/** in the address bar and press Enter to open the **Chrome Settings** window .

Step 2 : **Scroll down to the Settings** window , find and select the option named **Advanced** to display advanced settings on the Chrome browser.



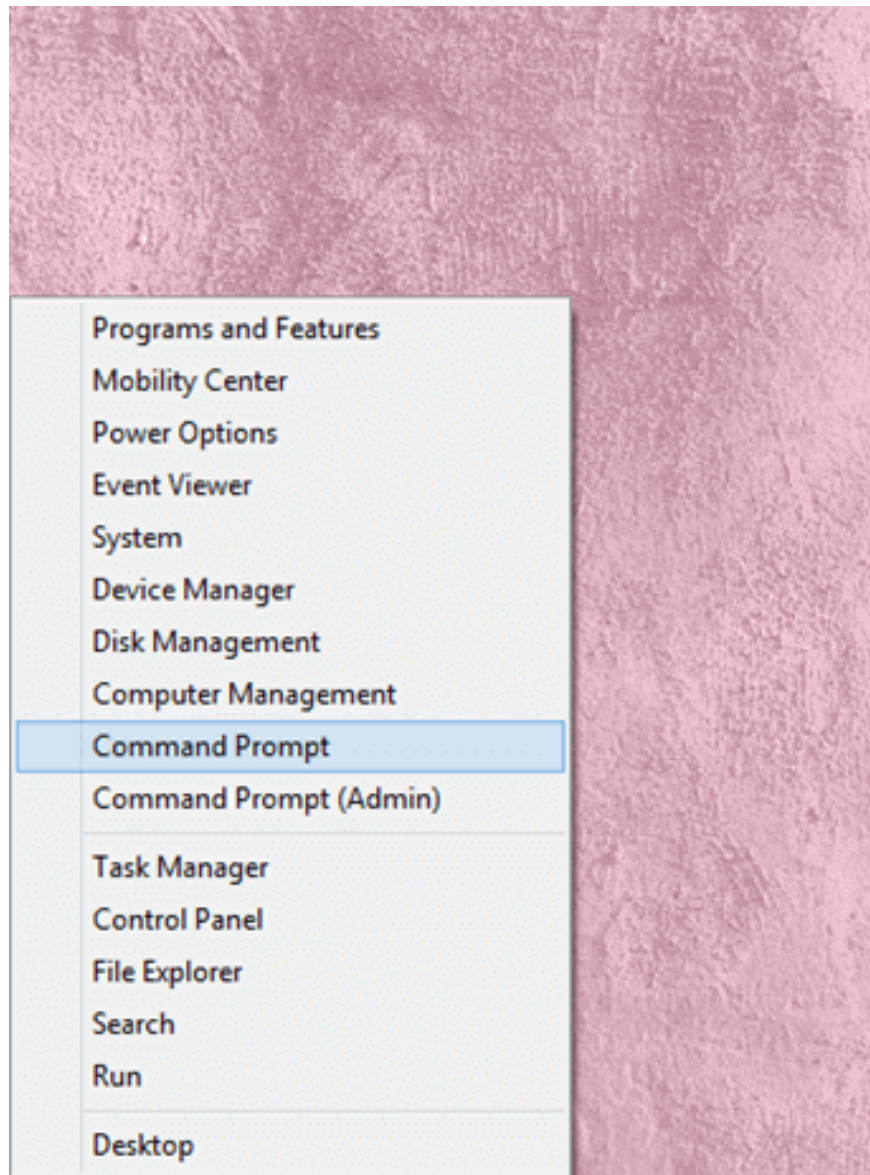
Step 3 : Next find and enable the option called " **Preload pages for faster searching and browsing** ". Choosing this setting will improve web loading times.



9. Specific site can't be reached error

In some cases, some websites fail to load and display errors. To fix this error:

Step 1 : Open the Command Prompt window by right-clicking the **Start** button , then selecting **Command Prompt** from the Power User Menu.



Step 2 : On the **Command Prompt** window , enter the command below and press **Enter** :

tracert www.sitename.com

```
Microsoft Windows [Version 6.2.9200]
(c) 2012 Microsoft Corporation. All rights reserved.

C:\Users\User>tracert www.quantrimang.com

Tracing route to quantrimang.com [123.30.180.60]
over a maximum of 30 hops:
  0  12 ms  18 ms  2 ms  192.168.70.1
  1  15 ms  59 ms  23 ms  192.168.11.1
  2  124 ms  171 ms  104 ms  118.70.0.12
  3  4 ms  2 ms  3 ms  118.70.0.12
  4  13 ms  6 ms  6 ms  113.22.4.121
  5  3 ms  6 ms  4 ms  118.70.1.174
  6  13 ms  7 ms  6 ms  113.22.4.112
  7  3 ms  5 ms  3 ms  static.vnpt.vn [113.171.6.225]
  8  4 ms  9 ms  4 ms  static.vnpt.vn [113.171.34.1]
  9  4 ms  3 ms  4 ms  static.vnpt.vn [113.171.27.126]
 10  6 ms  9 ms  9 ms  static.vnpt.vn [113.171.33.222]
 11  5 ms  5 ms  5 ms  static.vnpt.vn [123.30.180.60]
 12

Trace complete.

C:\Users\User>
```

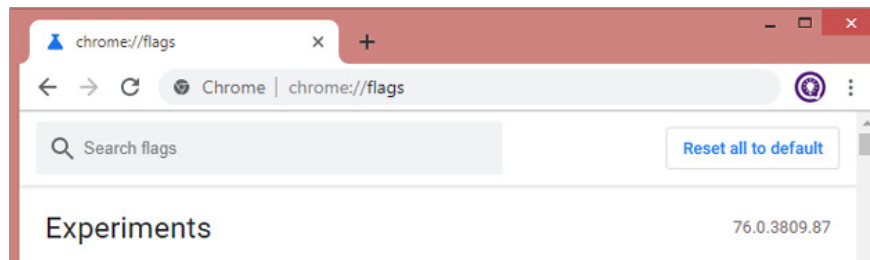
Note: In the above command, replace **www.sitename.com** with the address of the website where you encountered a loading error.

Step 3 : If the ping is still running, but the website cannot be accessed, you need to immediately contact your Internet service provider (ISP).

10. Reset Google Chrome settings

Step 1: Enter **chrome://flags/** into the Chrome browser address bar and press Enter.

Step 2: On the next window, find and click the **Reset all to default** button in the right corner of the screen and restart your Chrome browser.



Step 3: Finally, restart the browser to apply the changes and check if the "This site can't be reached" error still persists or not.

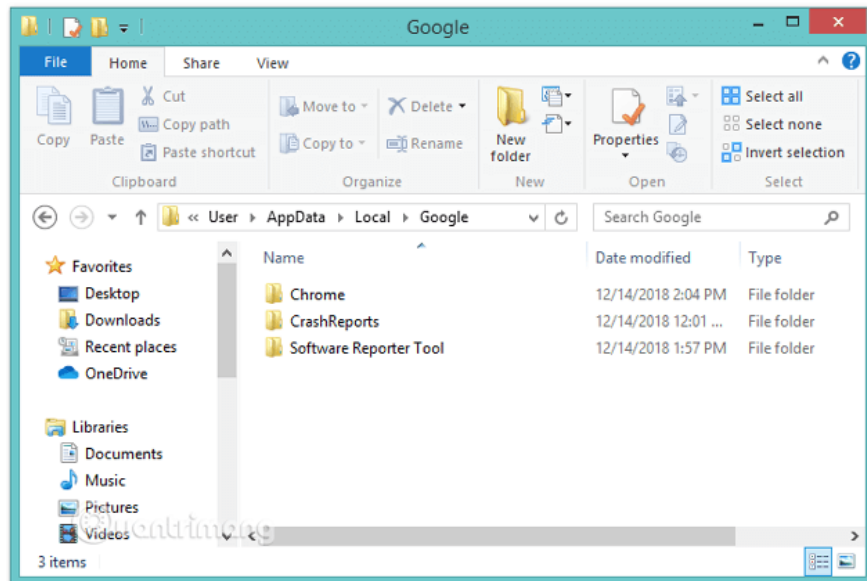
11. Reinstall Chrome browser

Step 1: Access **Control Panel**, then find and click **Uninstall a program** and then uninstall Chrome browser from your computer.



Step 2: Navigate to the following path and delete everything in the folder.

C:\Users%your_name%\AppDataLocal\Google



Step 3: Download the latest version of Chrome browser to your device and install.

Step 4: Restart your computer, then reopen Chrome browser to see if the error persists.

Refer to some more articles below:

Good luck!

You finished reading the article "**Quickly fix the error 'This site can't be reached' on Chrome**" edited by the [TipsMake](#) team. We hope this article has provided you with many useful tech tips and tricks. You can search for similar articles on tips and guides. Thank you for reading and for following us regularly.